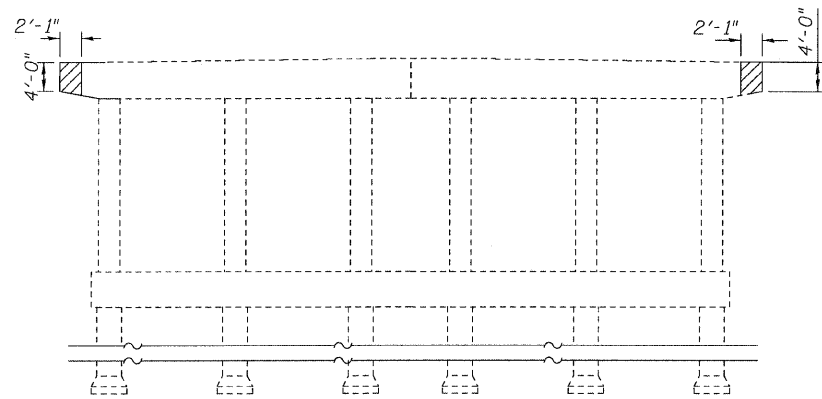
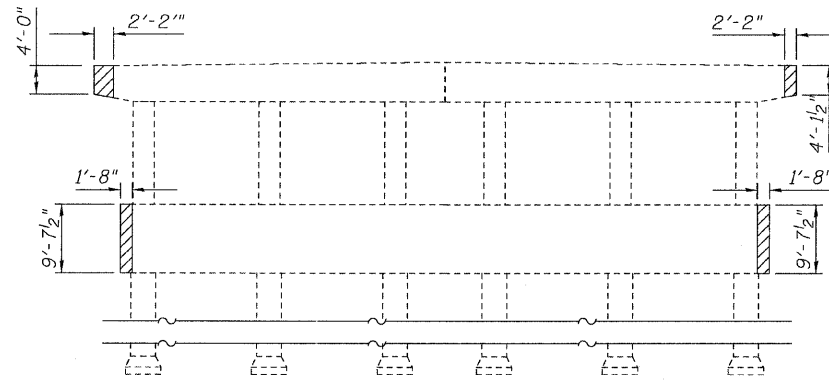


STATE OF ILLINOIS
DEPARTMENT OF TRANSPORTATION



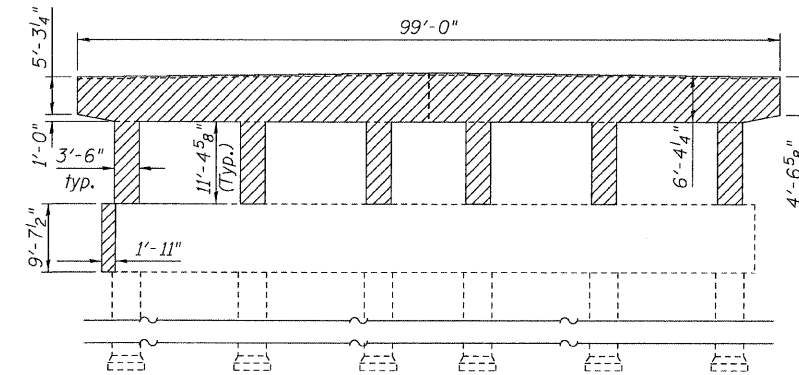
PIER 7

Existing longitudinal reinforcement in pier cap shall be cleaned and incorporated into new construction. Cost included with Concrete Removal.



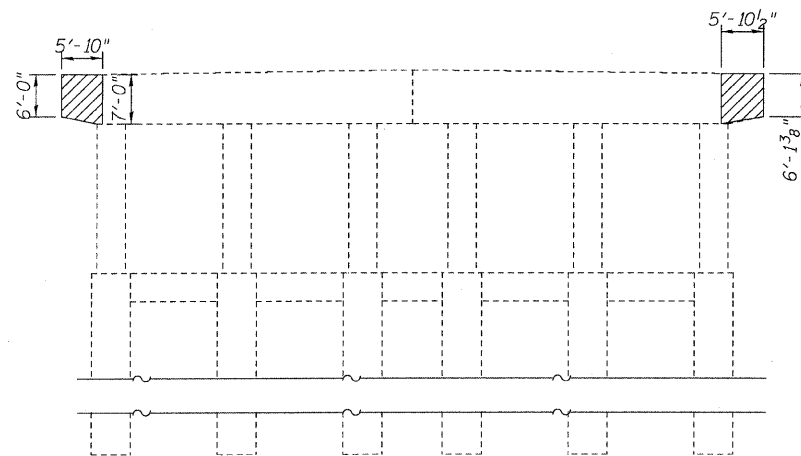
PIER 8

Existing longitudinal reinforcement in pier cap and crashwall shall be cleaned and incorporated into new construction. Cost included with Concrete Removal.



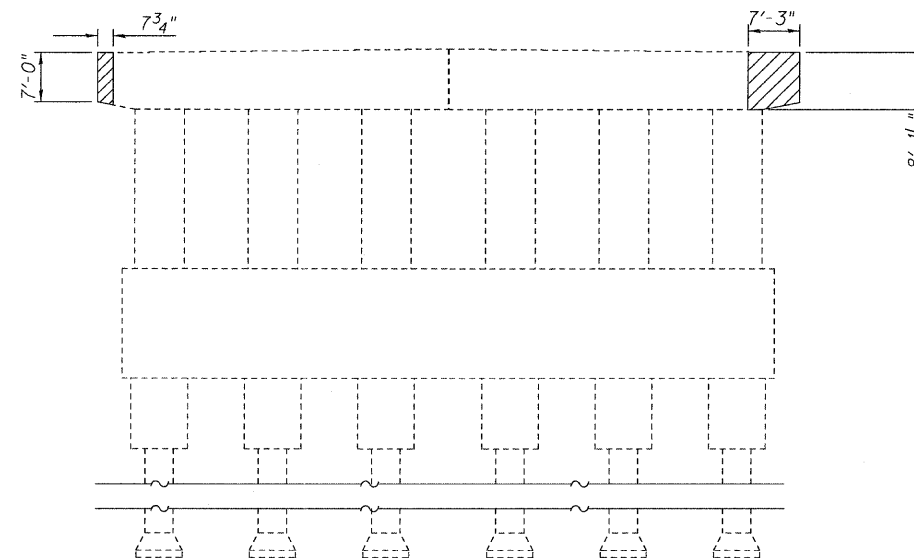
PIER 9

Existing vertical reinforcement in pier columns shall be cleaned and incorporated into new construction. Cost included with Concrete Removal.



PIER 10

Existing longitudinal reinforcement in pier cap shall be cleaned and incorporated into new construction. Cost included with Concrete Removal.



PIER 11

Existing longitudinal reinforcement in pier cap & vertical reinforcement in column shall be cleaned and incorporated into new construction. Cost included with Concrete Removal.

REMOVAL QUANTITIES

STRUCTURE	UNIT	QUANTITY
Pier 7	CU YD	4.0
Pier 8	CU YD	6.4
Pier 9	CU YD	138.8
Pier 10	CU YD	12.4
Pier 11	CU YD	9.7
* Existing Concrete Deck No. 2	CU YD	1,515.2

* For information only. Existing Concrete Deck No. 2 includes Deck, Sidewalk, Median & Parapet & Bridge Rail

BILL OF MATERIAL

ITEM	UNIT	TOTAL
Concrete Removal	CU YD	171.6
Removal of Existing Concrete Deck No. 2	EACH	1

NOTE:

- For C - Abutment 4 removal, see plans for S.N. 016-0724 (sheet 11).
- Elevations are looking north.

LEGEND



Concrete Removal

**REMOVAL PLAN
STRUCTURE NO. 016-3240**

TYLIN INTERNATIONAL	DESIGNED - DY, LS	REVISIONS		SHEET NO. 6	F.A.I RTE.	SECTION	COUNTY	TOTAL SHEETS	SHEET NO.	
	CHECKED - AMD, LS	NAME	DATE		55					0711.2R & 1011.1BR
	DRAWN - DY, LS				73 SHEETS	CONTRACT NO. 60999				
	CHECKED - AMD, LS					FED. ROAD DIST. NO. 1 ILLINOIS FED. AID PROJECT				
	DATE - 03/25/2011									