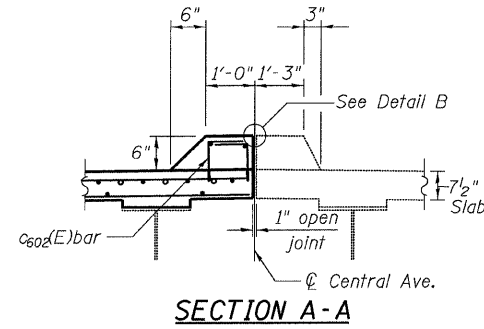
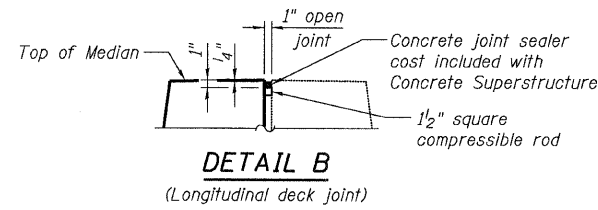


STATE OF ILLINOIS  
DEPARTMENT OF TRANSPORTATION

SUPERSTRUCTURE BILL OF MATERIAL

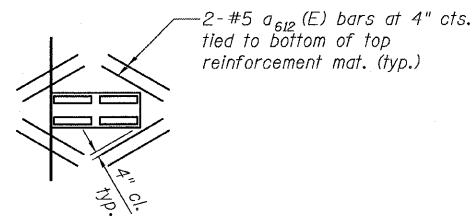


SECTION A-A

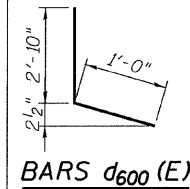


DETAIL B

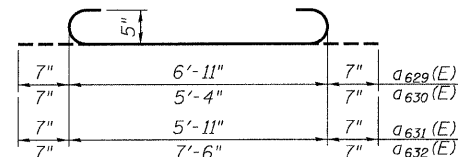
(Longitudinal deck joint)



PLAN AT SCUPPERS



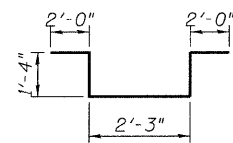
BARS d600(E)



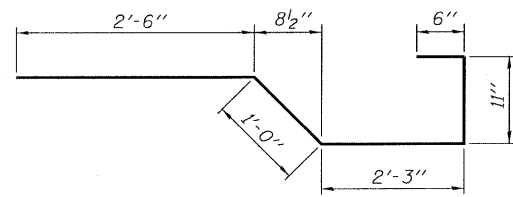
BARS a629(E)  
THRU a632(E)

Bar	A	B
d601(E)	2'-10 1/2"	10 1/2"
d604(E)	1'-6"	1'-7"

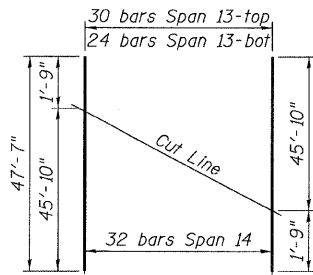
BARS d601(E) & d604(E)



BAR d603(E)

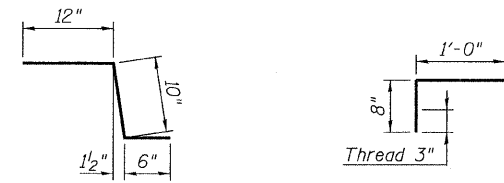


BAR x600(E)



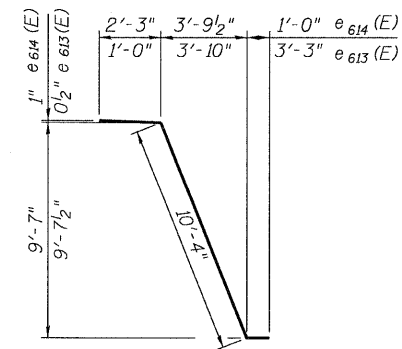
BAR CUTTING DIAGRAM

Bar a605(E)

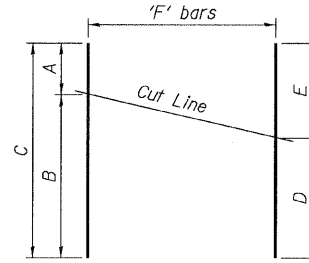


BARS c601(E)

BAR c602(E)



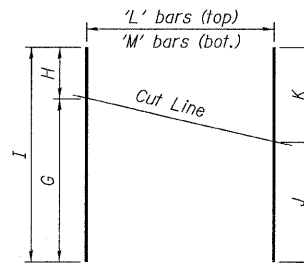
BAR e613(E) & BAR e614(E)



Bar	A	B	C	D	E	F
a612(E)	1'-6"	26'-6"	28'-0"	1'-6"	26'-6"	12
a622(E)	1'-3"	10'-0"	11'-3"	1'-3"	10'-0"	18
a623(E)	2'-7"	45'-2"	47'-9"	2'-7"	45'-2"	30
b603(E)	3'-6"	49'-6"	53'-0"	28'-3"	24'-9"	7
b616(E)	3'-0"	40'-4"	43'-4"	22'-7"	20'-9"	11
c605(E)	3'-11"	15'-1"	19'-0"	3'-11"	15'-1"	32
c606(E)	1'-2"	13'-3"	14'-5"	1'-2"	13'-3"	16

BAR CUTTING DIAGRAM

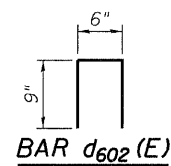
Order bars full length. Cut as shown.



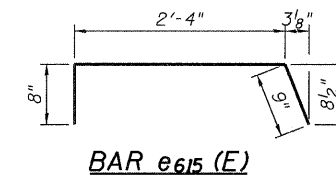
Bar	G	H	I	J	K	L	M
a611(E)	47'-8"	1'-11"	49'-7"	1'-11"	47'-8"	30	24
a613(E)	23'-0"	22'-6"	45'-6"	26'-0"	19'-6"	8	6
a614(E)	13'-9"	19'-1"	32'-10"	16'-2"	16'-8"	8	6
a615(E)	13'-5"	9'-2"	22'-7"	11'-6"	11'-1"	8	6
a616(E)	8'-11"	5'-10"	14'-9"	7'-6"	7'-3"	8	6
a618(E)	16'-5"	10'-7"	27'-0"	13'-10"	13'-2"	7	5
a619(E)	18'-0"	13'-5"	31'-5"	16'-0"	15'-5"	9	6
a620(E)	13'-3"	9'-6"	22'-9"	11'-6"	11'-3"	9	6

BAR CUTTING DIAGRAM

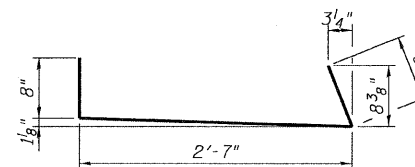
Order bars full length. Cut as shown.



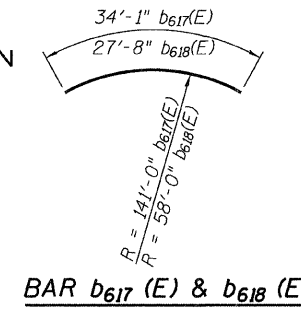
BAR d602(E)



BAR e615(E)



BAR e612(E)



BAR b617(E) & b618(E)

Bar	No.	Size	Length	Shape
a600(E)	15	#5	32'-9"	—
a601(E)	15	#5	29'-5"	—
a602(E)	1121	#5	35'-6"	—
a603(E)	572	#5	34'-2"	—
a604(E)	351	#5	28'-10"	—
a605(E)	672	#5	47'-7"	—
a606(E)	440	#5	23'-10"	—
a607(E)	268	#5	38'-11"	—
a609(E)	398	#5	19'-0"	—
a610(E)	1343	#5	27'-7"	—
a611(E)	54	#5	49'-7"	—
a612(E)	12	#5	28'-0"	—
a613(E)	14	#5	45'-6"	—
a614(E)	14	#5	32'-10"	—
a615(E)	14	#5	22'-7"	—
a616(E)	14	#5	14'-9"	—
a617(E)	23	#5	5'-8"	—
a618(E)	12	#5	27'-0"	—
a619(E)	15	#5	31'-5"	—
a620(E)	15	#5	22'-9"	—
a621(E)	99	#5	9'-2"	—
a622(E)	18	#5	11'-3"	—
a623(E)	30	#5	47'-9"	—
a624(E)	456	#5	46'-8"	—
a625(E)	221	#5	26'-0"	—
a626(E)	172	#5	36'-4"	—
a627(E)	201	#5	44'-0"	—
a628(E)	156	#5	43'-4"	—
a629(E)	9	#5	8'-1"	—
a630(E)	9	#5	6'-6"	—
a631(E)	45	#5	7'-1"	—
a632(E)	9	#5	8'-8"	—
a633(E)	336	#5	2'-0"	—
a634(E)	20	#5	9'-8"	—
a635(E)	17	#5	10'-8"	—
b600(E)	1158	#5	30'-10"	—
b601(E)	222	#6	39'-7"	—
b602(E)	798	#5	34'-3"	—
b603(E)	7	#5	53'-0"	—
b604(E)	8	#5	39'-0"	—
b605(E)	24	#5	30'-5"	—
b606(E)	1872	#5	27'-3"	—
b607(E)	3	#5	14'-10"	—
b608(E)	4	#5	33'-2"	—
b609(E)	4	#5	51'-4"	—
b610(E)	8	#5	21'-0"	—
b611(E)	6	#5	14'-6"	—
b612(E)	216	#5	30'-7"	—
b613(E)	222	#6	15'-8"	—
b614(E)	324	#6	38'-11"	—
b615(E)	282	#6	37'-9"	—
b616(E)	11	#5	43'-4"	—
b617(E)	18	#5	34'-1"	—
b618(E)	12	#5	27'-8"	—
b619(E)	14	#5	12'-6"	—
b620(E)	4	#5	46'-2"	—
b621(E)	6	#5	12'-2"	—
b622(E)	7	#5	26'-0"	—
b623(E)	7	#5	39'-6"	—
c600(E)	889	#5	5'-8"	—
c601(E)	1343	#5	2'-4"	—
c602(E)	2110	#5	1'-8"	—
c603(E)	304	#5	13'-8"	—
c604(E)	183	#5	3'-8"	—
c605(E)	32	#5	19'-0"	—
c606(E)	16	#5	14'-5"	—

Bar	No.	Size	Length	Shape
c608(E)	339	#5	1'-3"	—
c609(E)	137	#5	13'-5"	—
c610(E)	122	#5	4'-10"	—
c611(E)	183	#5	8'-4"	—
d600(E)	1343	#4	3'-10"	—
d601(E)	1343	#6	3'-9"	—
d602(E)	318	#4	2'-0"	—
d603(E)	48	#6	8'-11"	—
d604(E)	36	#6	3'-1"	—
e600(E)	174	#5	19'-8"	—
e601(E)	48	#5	16'-8"	—
e602(E)	78	#5	15'-8"	—
e603(E)	6	#5	18'-5"	—
e604(E)	6	#5	18'-9"	—
e605(E)	12	#5	13'-8"	—
e606(E)	12	#5	11'-4"	—
e607(E)	12	#5	19'-2"	—
e608(E)	36	#5	15'-3"	—
e610(E)	6	#5	17'-1"	—
e611(E)	6	#5	15'-10"	—
e612(E)	3	#5	4'-0"	—
e613(E)	3	#5	14'-7"	—
e614(E)	3	#5	13'-7"	—
e615(E)	3	#5	3'-9"	—
e616(E)	6	#5	19'-1"	—
e617(E)	3	#5	8'-1"	—
e618(E)	6	#5	14'-10"	—
e619(E)	12	#5	18'-2"	—
e620(E)	3	#5	8'-9"	—
e621(E)	6	#5	11'-10"	—
x600(E)	126	#5	7'-2"	—
Protective Coat	SQ YD		8,375	
Bridge Deck Grooving	SQ YD		5,800	
Concrete Superstructure	CU YD		2,234.3	
Reinforcement Bars, Epoxy Coated	POUND		464,050	

SUPERSTRUCTURE  
DETAILS 2  
STRUCTURE NO. 016-3240

TYLIN INTERNATIONAL

DESIGNED	- DY, LS	REVISIONS	
CHECKED	- AMD, LS	NAME	DATE
DRAWN	- DY, LS		
CHECKED	- AMD, LS		
DATE	- 03/25/2011		

SHEET NO.	F.A.I RTE.	SECTION	COUNTY	TOTAL SHEETS	SHEET NO.
73	55	0711.2R & 1011.1BR	COOK	741	631
CONTRACT NO. 60999					
FED. ROAD DIST. NO. 1 ILLINOIS FED. AID PROJECT					

9:15:33 AM  
es:\01345\structure\016-3240\55c3deckd12.dgn  
5/9/2011