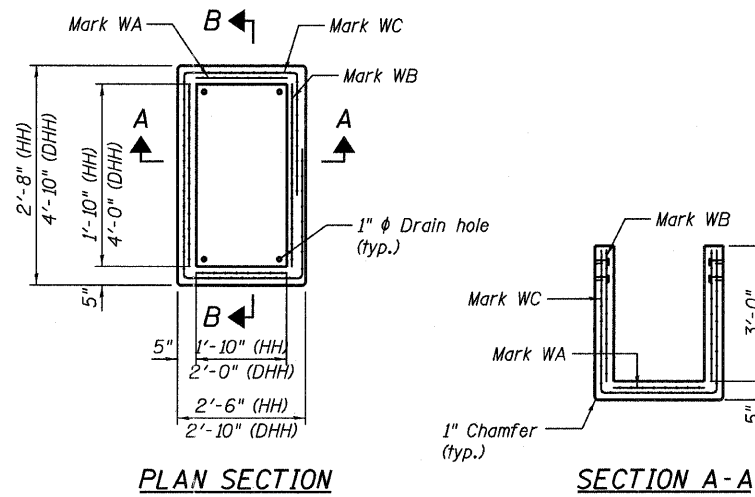
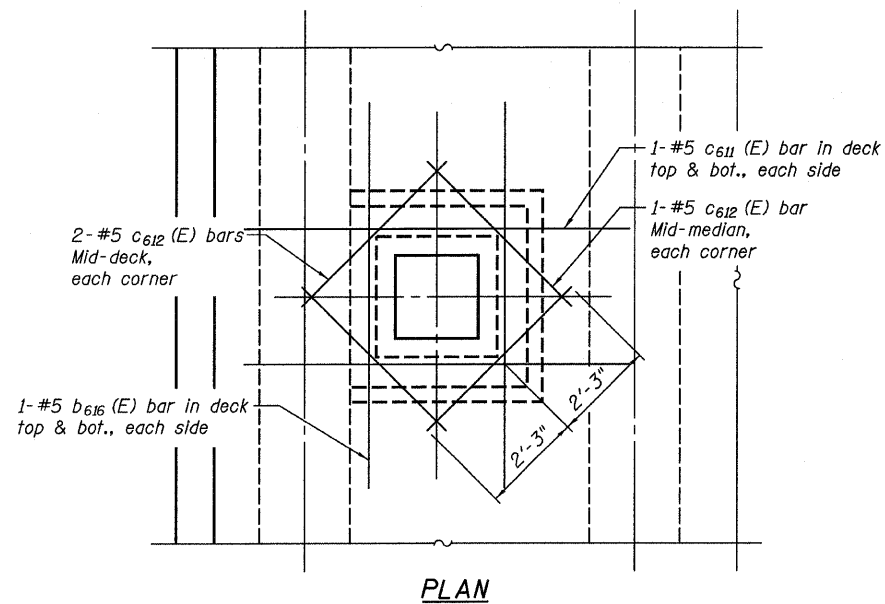
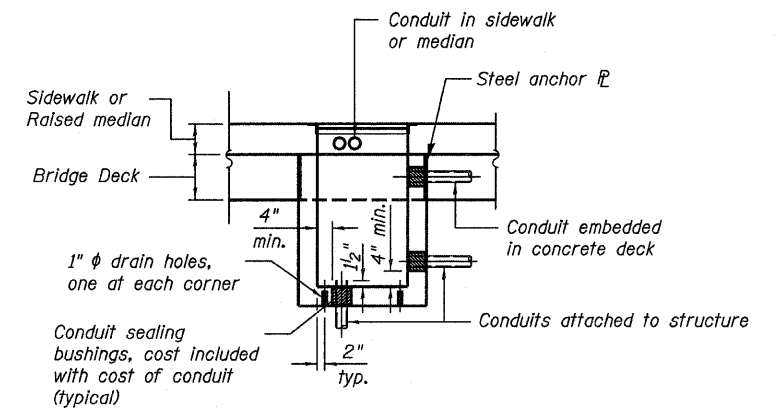


STATE OF ILLINOIS
DEPARTMENT OF TRANSPORTATION



PRECAST CONCRETE HH & DHH DETAILS

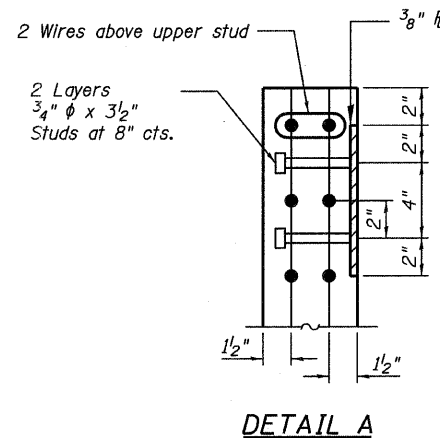
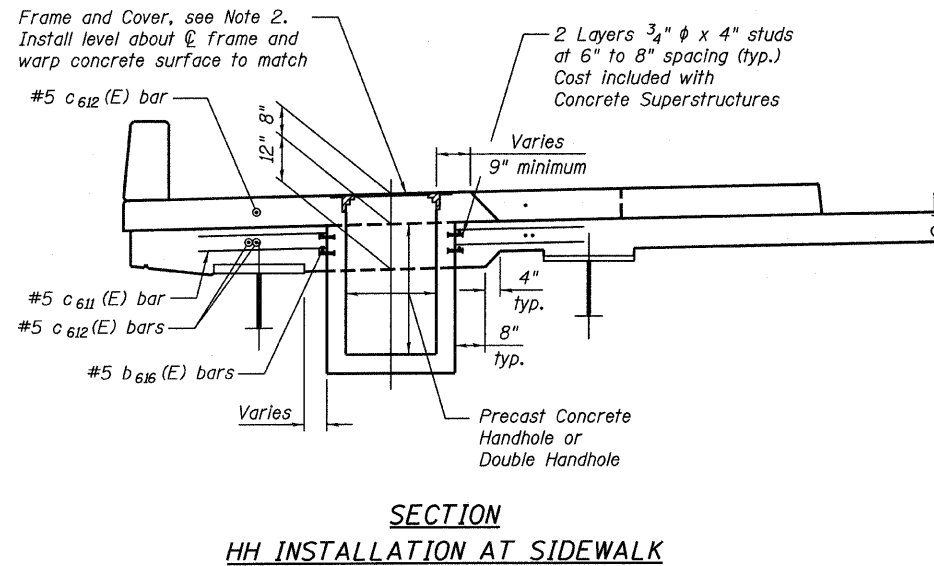


CONDUIT DETAILS & HANDHOLES

- Holes for conduit penetration must be cast in or cored in shop. Min. clear spacing between conduit holes shall be 5 in.
- Conduit holes shall be compatible with Fabricator's Conduit Sealing System.
- The contractor shall coordinate the sizes & locations of the conduits with the conduit installation plan, and include the sizes & locations of the conduit holes in the shop drawings for fabrication of the handholes. The conduit installation plan shall be submitted for information with the Handhole shop drawings.

NOTES:

- Frame and cover shall be Neenah R6662-GP for single handhole, and R6663-KH for double handhole; or approved equal. Cost included with Handhole (Special).
- For concrete handhole locations, see Sheet 20.
- Cost of handhole concrete, reinforcement, embedded studs and 3/8" Ⓡ shall be included in Handhole (Special).
- For bar list and bar details, see Sheet 28.



Note:
Work this sheet with Traffic Signal and Lighting Plans.

MARK	WWR	HH		DHH	
		L [ft]	T [ft]	L [ft]	T [ft]
WA	*	8'-2"	1'-11"	10'-4"	2'-1"
WB	*	8'-6"	1'-11"	8'-8"	4'-1"
WC	*	10'-0"	3'-4"	14'-8"	3'-4"

* All WWR shall be epoxy coated 4" x 4" - MW26xMW26. All bend radii 1". Min. lap 6".

**STRUCTURE-MOUNTED
HANDHOLE DETAILS
STRUCTURE NO. 016-3240**

TYLIN INTERNATIONAL	DESIGNED - MMB	REVISIONS		SHEET NO. 28A	F.A.I. RTE.	SECTION	COUNTY	TOTAL SHEETS	SHEET NO.						
	CHECKED - AMD,	NAME	DATE							73 SHEETS	0711.2R & 1011.1BR	COOK	741	631A	
	DRAWN - MMB														CONTRACT NO. 60999
	CHECKED - AMD,														
	DATE - 03/25/2011														

4/28/2011 2:27:36 PM p:\01345\structure\03_North_Approach_016-3240\165c3hhhdet.dgn