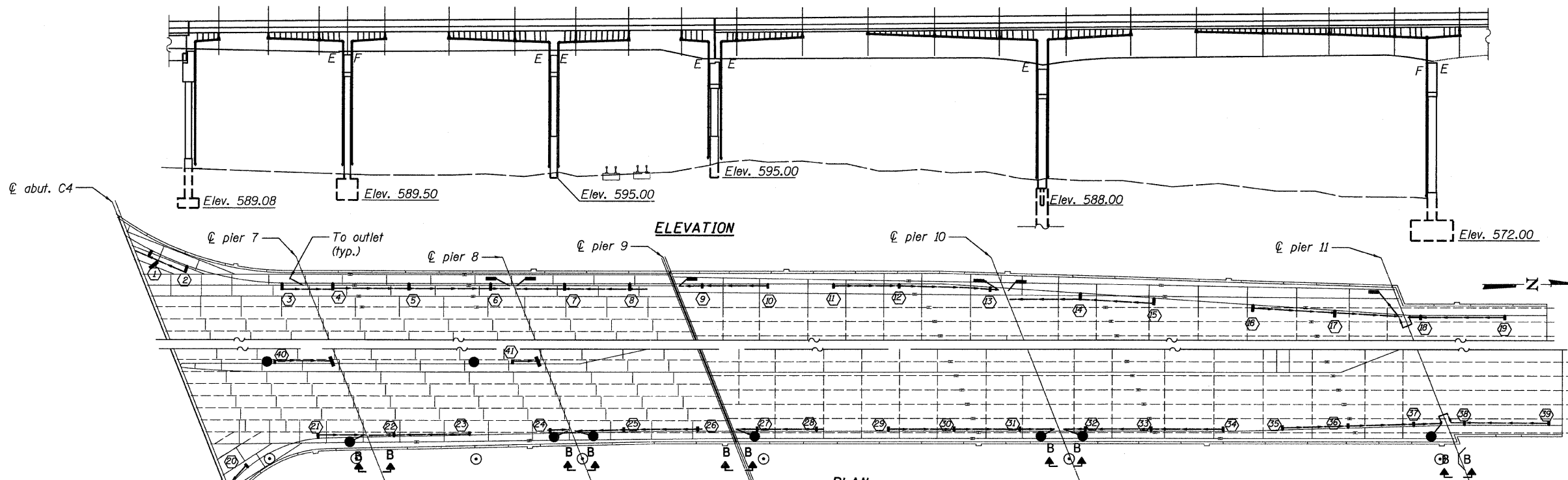


STATE OF ILLINOIS
DEPARTMENT OF TRANSPORTATION



ELEVATION

PLAN

SCUPPER LOCATION TABLE

Scupper No.	Type	Station	Offset	Lt/Rt
1	DS-33	21+31.75	69.36	Lt
2	DS-33	21+48.64	62.17	Lt
3	DS-33	21+93.74	54.02	Lt
4	DS-33	22+17.77	54.00	Lt
5	DS-33	22+54.01	54.00	Lt
6	DS-33	22+92.78	54.00	Lt
7	DS-33	23+27.88	54.00	Lt
8	DS-33	23+58.88	54.00	Lt
9	DS-12	23+93.24	54.00	Lt
10	DS-12	24+24.41	54.00	Lt
11	DS-12	24+55.58	54.00	Lt
12	DS-12	24+86.75	54.00	Lt
13	DS-12	25+30.04	52.42	Lt
14	DS-33	25+72.87	49.54	Lt
15	DS-33	26+07.79	47.18	Lt
16	DS-33	26+54.69	44.02	Lt
17	DS-33	26+93.60	41.40	Lt
18	DS-12	27+34.22	39.00	Lt
19	DS-12	27+74.22	39.00	Rt
20	DS-12	21+87.61	59.47	Rt
21	DS-12	22+20.95	45.73	Rt
22	DS-12	22+57.01	44.79	Rt
23	DS-11	22+92.91	44.01	Rt
* 24	DS-12	23+31.16	42.84	Rt
25	DS-12	23+66.16	42.41	Rt
26	DS-12	24+01.16	42.00	Rt
27	DS-12	24+29.45	42.00	Rt
28	DS-12	24+57.62	42.00	Rt
29	DS-12	24+91.79	42.00	Rt
30	DS-12	25+22.96	42.00	Rt
31	DS-12	25+54.13	42.00	Rt
32	DS-12	25+85.29	42.00	Lt
33	DS-12	26+16.46	42.00	Rt
34	DS-12	26+50.63	42.00	Rt
35	DS-12	26+78.80	41.33	Rt
36	DS-12	27+09.95	40.33	Rt
37	DS-12	27+41.11	39.54	Rt
38	DS-12	27+65.17	39.00	Rt
39	DS-12	28+05.18	39.00	Rt
40	DS-11	22+00.20	10.00	Rt
41	DS-11	23+13.25	10.00	Rt

Offsets are measured from the ± of Central Ave. to the intersection of the ± of scupper with face of curb.

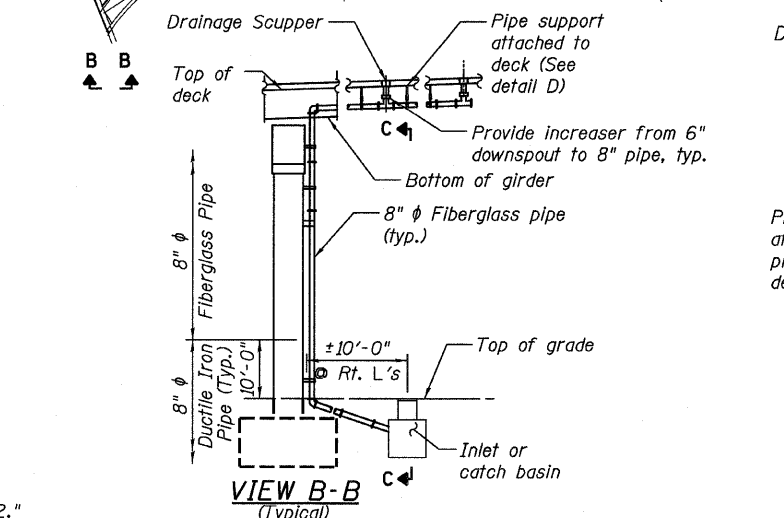
*Offset is to edge of scupper, placed 4" from face of curb.

BILL OF MATERIAL

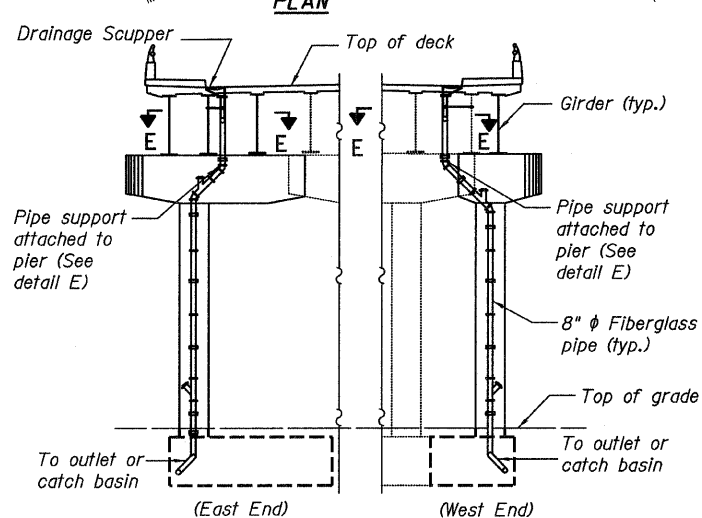
ITEM	UNIT	TOTAL
Drainage System	L. SUM	0.54

NOTES:

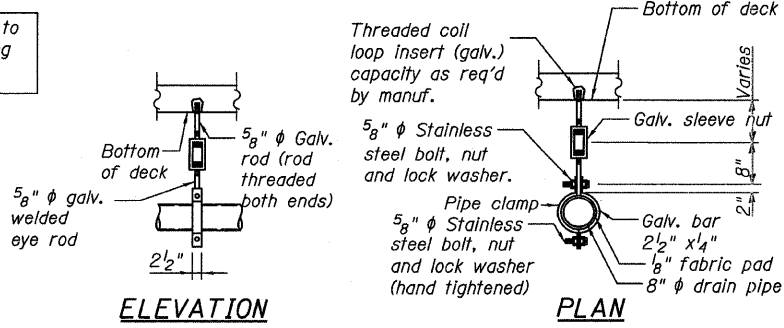
- See Special Provisions for additional information.
- Contractor to provide shop drawings for Drainage System.
- The cost for the removal of the existing drainage system is included with the cost of "Removal of Existing Concrete Deck No. 2."
- The cost of the ductile iron pipe, connection to proposed catch basin, trenching and backfilling shall be included in Drainage System.



VIEW B-B (Typical)



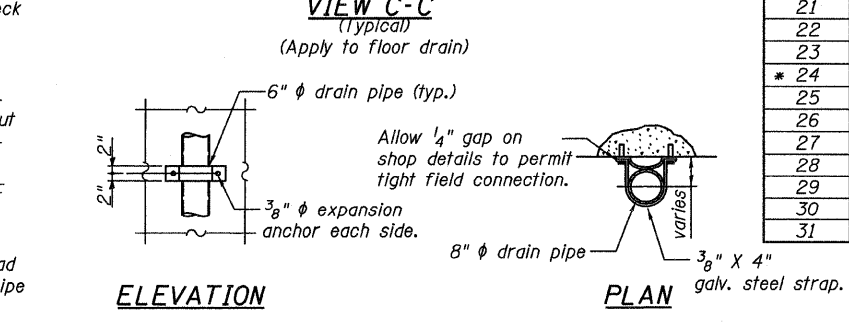
VIEW C-C (Typical)



ELEVATION

PLAN

PIPE SUPPORT DETAIL AT DECK - DETAIL D



ELEVATION

PLAN

PIPE SUPPORT DETAIL AT ABUTMENT & PIERS - DETAIL E

DRAINAGE SYSTEM
STRUCTURE NO. 016-3240

TYLIN INTERNATIONAL

DESIGNED	BY	LS	REVISIONS	
CHECKED	BY	AMD, LS	NAME	DATE
DRAWN	BY	LS		
CHECKED	BY	AMD, LS		
DATE		03/25/2011		

SHEET NO. 33	F.A.I. RTE.	SECTION	COUNTY	TOTAL SHEETS	SHEET NO.
73 SHEETS	55	0711.2R & 1011.1BR	COOK	741	636
			CONTRACT NO. 60999		
FED. ROAD DIST. NO. 1 ILLINOIS FED. AID PROJECT					

4/28/2011 2:27:42 PM P:\01345\structure\016-3240\15563e\ain.dgn