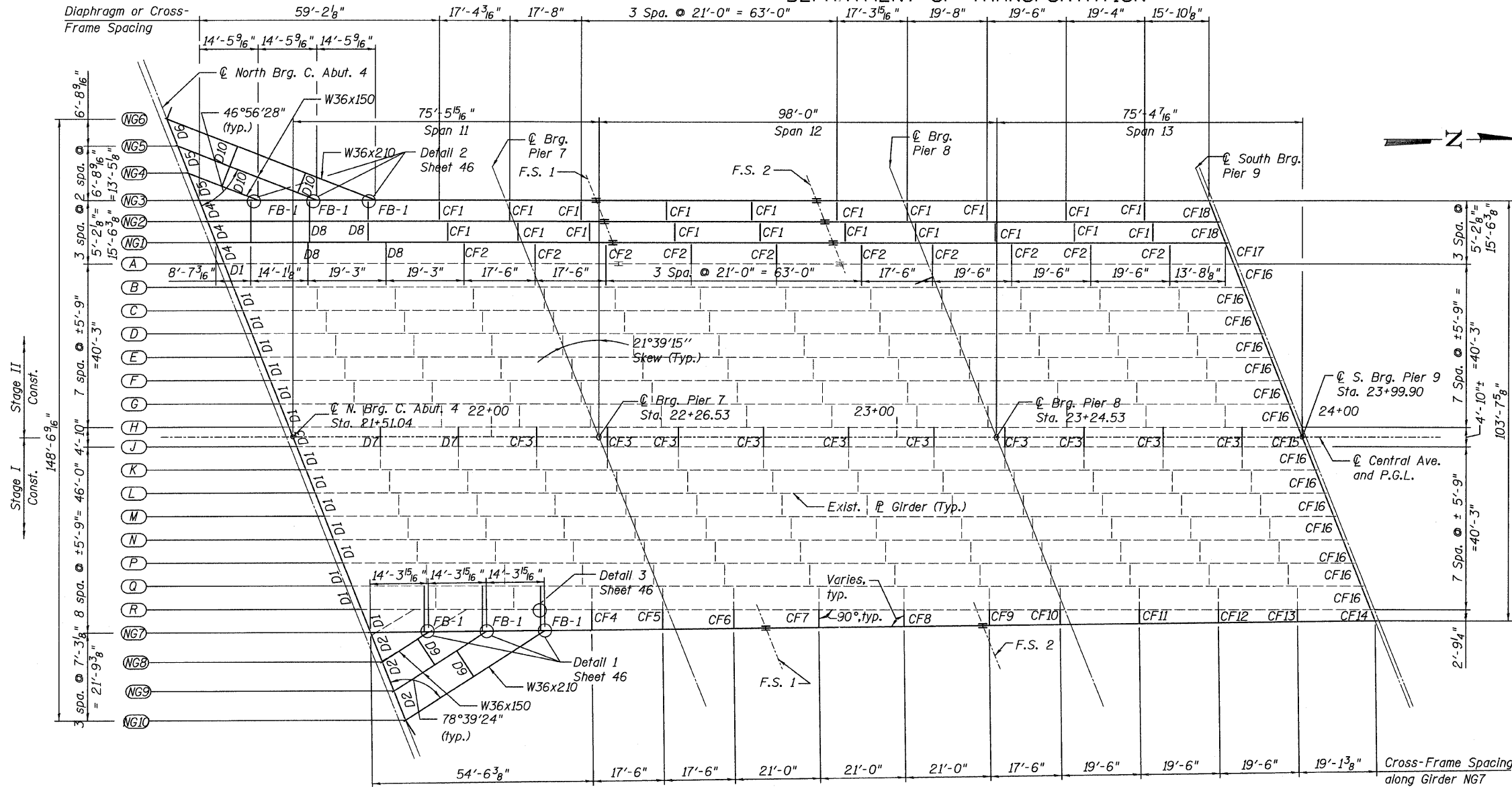


STATE OF ILLINOIS
DEPARTMENT OF TRANSPORTATION



FRAMING PLAN

TOP OF BEAM & WEB ELEVATIONS

Beam	℄ N. Brg. C. Abut. 4	℄ Brg. Pier 7	Field Splice 1	Field Splice 2	℄ Brg. Pier 8	℄ S.Brg. Pier 9
NG6	628.31	-	-	-	-	-
NG5	628.38	-	-	-	-	-
NG4	628.53	-	-	-	-	-
NG3	628.56	628.81	628.96	629.17	629.22	629.55
NG2	628.67	628.89	628.92	629.13	629.23	629.51
NG1	628.78	629.00	629.03	629.24	629.34	629.62
NG7	628.90	629.12	629.26	629.49	629.56	629.91
NG8	628.88	-	-	-	-	-
NG9	628.74	-	-	-	-	-
NG10	628.64	-	-	-	-	-

* For Fabrication Only

FIELD SPLICE LAYOUT

(Measured from ℄ Brg.)

Girder	F.S. 1	F.S. 2
NG7	97'-5 7/8"	53'-6 7/8"
NG1	97'-10 7/8"	54'-3 7/8"
NG2	97'-10 7/8"	54'-3 7/8"
NG3	97'-10 7/8"	54'-3 7/8"

NOTES:

- Structural steel for girders, splices and diaphragms marked "FB" and associated connection plates shall conform to the requirements of AASHTO M270 Grade 50. All other structural steel shall conform to the requirements of AASHTO M270 Grade 36.
- All cross frames or diaphragms shall be installed as steel is erected and secured with erection pins and bolts. Individual cross frames or diaphragms at support may be temporarily disconnected to install bearing anchor rods.
- Existing end diaphragms, bent plates and bolts to be removed as indicated. See Jacking Details Sheet 54 for details cost included with structural steel removal.
- For Bill of Material, see Sheet 2.
- For Girder Elevations, see Sheets 39 thru 40.
- For Diaphragms lengths, spacing and details, see Sheet 43.
- For Cross Frame Details, see Sheet 44.
- For Field Splice Details, see Sheet 47.
- For Shear Stud Details, see Section A-A on Sheet 43.
- F.S. - denotes girder Field Splice.
- E.G.- denotes Existing Girder.

FRAMING PLAN
SPANS 11, 12 & 13
STRUCTURE NO. 016-3240

TYLIN INTERNATIONAL	DESIGNED - DY, LS	REVISIONS		SHEET NO. 36	F.A.I. RTE.	SECTION	COUNTY	TOTAL SHEETS	SHEET NO.	
	CHECKED - AMD, LS	NAME	DATE		73 SHEETS	55	0711.2R & 1011.1BR	COOK	741	639
	DRAWN - DY, LS					CONTRACT NO. 60999				
	CHECKED - AMD, LS					FED. ROAD DIST. NO. 1 ILLINOIS FED. AID PROJECT				
	DATE - 03/25/2011									

9:15:36 AM
p:\01345\structure\03 North Approach 016-3240\15563f-ameplan1.dgn