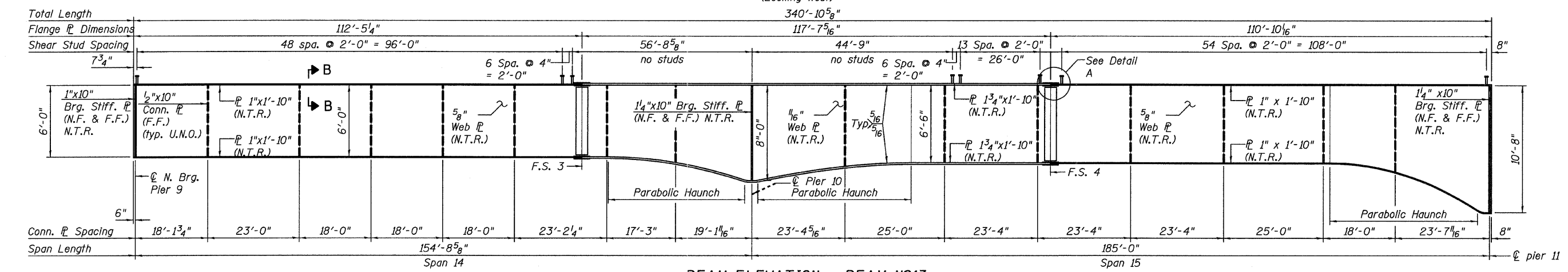
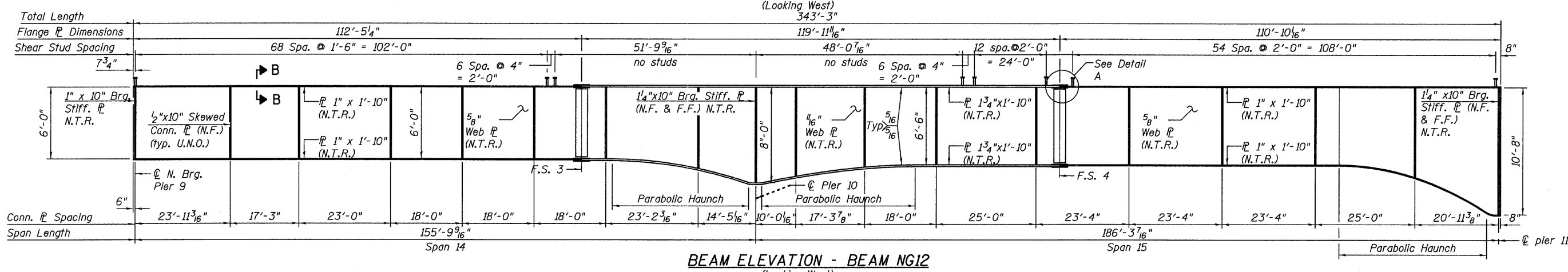
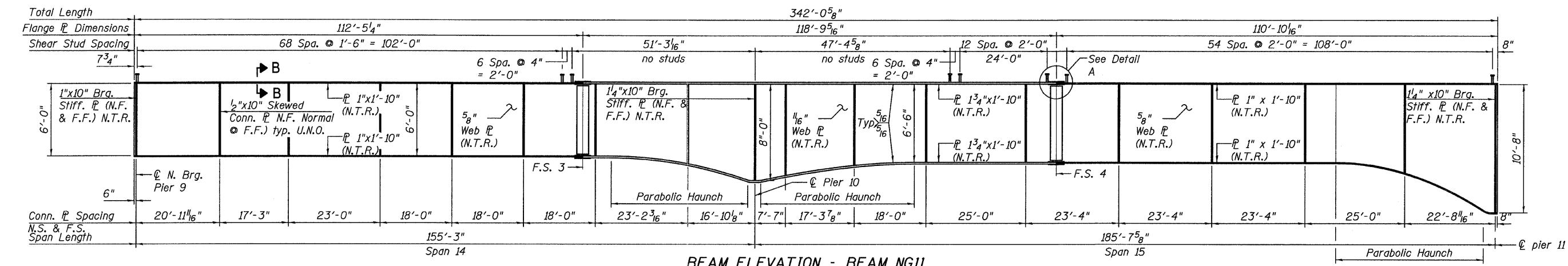
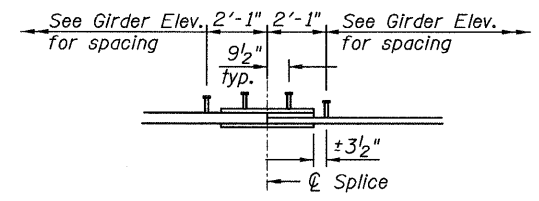
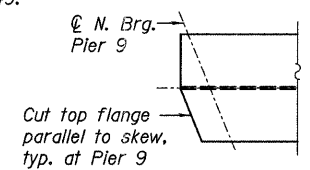


STATE OF ILLINOIS
DEPARTMENT OF TRANSPORTATION



- NOTES:**
- All structural steel on this sheet shall conform to the requirements of AASHTO M 270 Grade 50.
 - For Top of Web Elevations and Camber Diagram, see Sheets 37 & 49.
 - For Bearing Stiffener Detail, Intermediate Stiffener Detail and Connection Plate Detail, see Sheets 44 & 45.
 - Load carrying components designated "N.T.R." shall conform to the Supplemental Requirements for Notch Toughness, Zone 2.
 - For Field Splice 3 and 4 details, see Sheet 48.
 - For Parabolic Haunch Details, see Sheet 49.
 - For Section B-B, see Sheet 43.
 - U.N.O. Denotes Unless Noted Otherwise.
 - N.F. Denotes Near Face.
 - F.F. Denotes Far Face.



GIRDER ELEVATIONS
SPANS 14 & 15
STRUCTURE NO. 016-3240

TYLIN INTERNATIONAL	DESIGNED - DY, LS	REVISIONS	
	CHECKED - AMD, LS	NAME	DATE
	DRAWN - DY, LS		
	CHECKED - AMD, LS		
	DATE - 03/25/2011		

SHEET NO. 41	F.A.I. RTE.	SECTION	COUNTY	TOTAL SHEETS	SHEET NO.
	73 SHEETS	55	0711.2R & 1011.1BR	COOK	741 644
			CONTRACT NO. 60999		
FED. ROAD DIST. NO. 1 ILLINOIS FED. AID PROJECT					

5/9/2011 9:15:39 AM p:\01345\structure\03_North Approach_016-3240\155c31f_amed13.dgn