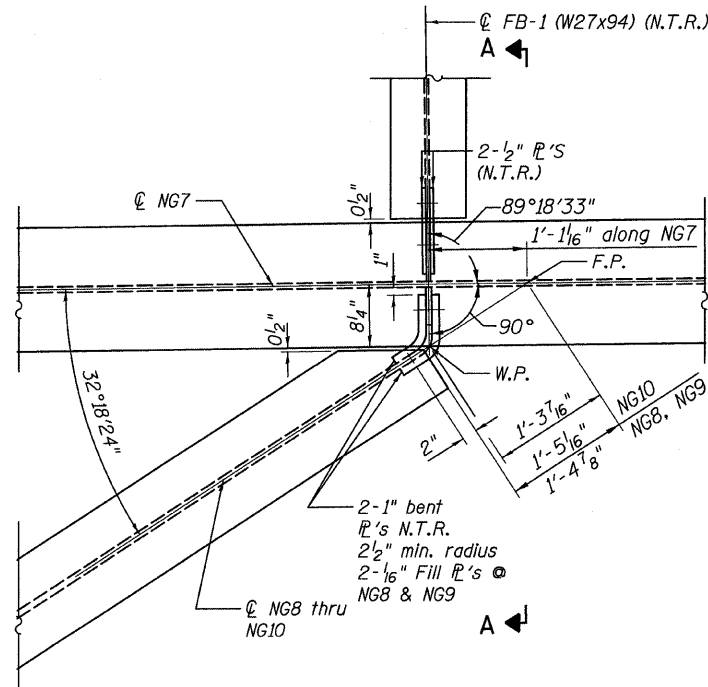
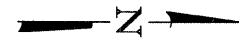


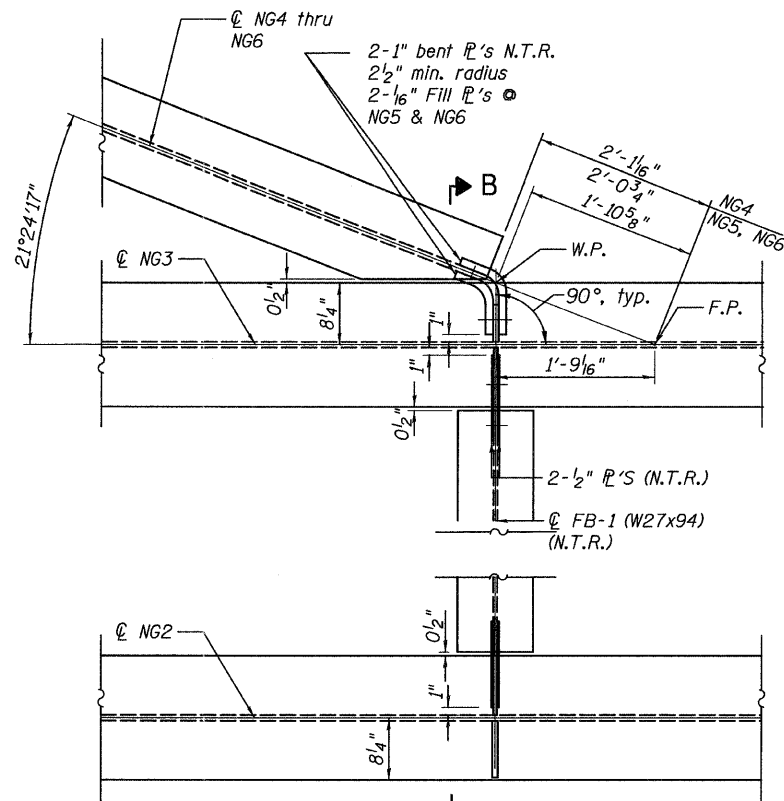
STATE OF ILLINOIS
DEPARTMENT OF TRANSPORTATION



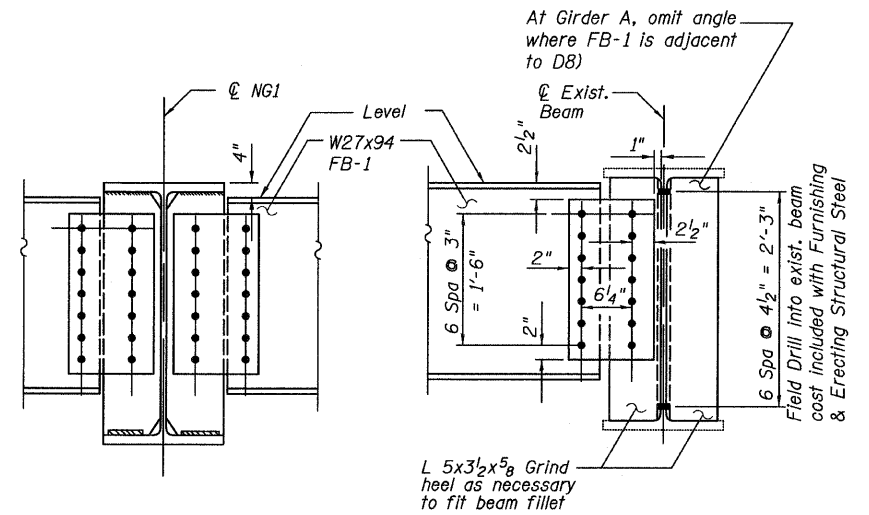
DETAIL 1



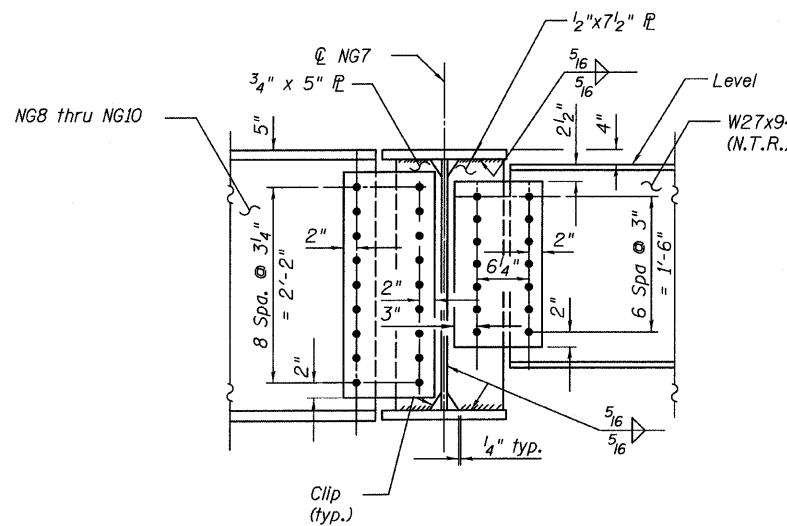
TYPICAL CLIPPING
DETAIL



DETAIL 2



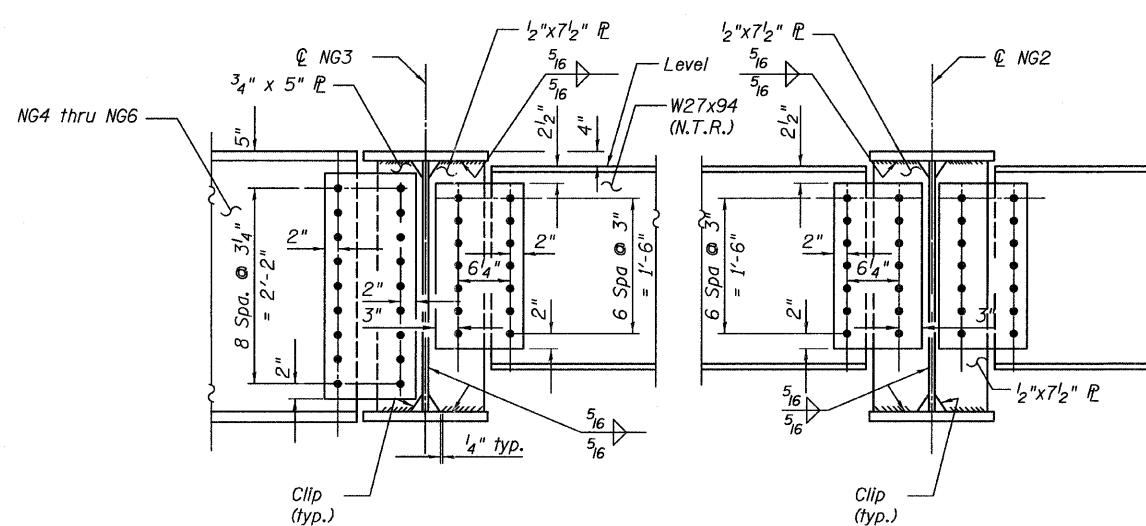
AT EXISTING BEAM
(Girder A shown, Girder R & Q similar)



SECTION A-A

All bolts shall be 7/8" ϕ . Holes shall be 15/16" ϕ in framing of NG7 with NG10. Holes shall be 1 1/16" ϕ in framing of NG7 with FB-1.

Two hardened washers required for each set of oversized holes.



SECTION B-B

All bolts shall be 7/8" ϕ . Holes shall be 15/16" ϕ in framing of NG3 with NG4. Holes shall be 1 1/16" ϕ in framing of NG3 with FB-1.

Two hardened washers required for each set of oversized holes.

NOTES:

- Structural Steel shall conform to the requirements of AASHTO M 270 Grade 50.
- For shear stud location see girder elevations.
- Load carrying components designated 'N.T.R.' shall conform to the Supplemental Requirements for Notch Toughness, Zone 2.
- N.F. - denotes near face.
- F.F. - denotes far face.
- Work this sheet with sheets 36 & 40.
- F.P. - denotes framing point.

FRAMING DETAILS
CONNECTIONS
STRUCTURE NO. 016-3240

TYLIN INTERNATIONAL

DESIGNED	DY, LS	REVISIONS	
CHECKED	AMD, LS	NAME	DATE
DRAWN	DY, LS		
CHECKED	AMD, LS		
DATE	03/25/2011		

SHEET NO. 46	F.A.I. RTE.	SECTION	COUNTY	TOTAL SHEETS	SHEET NO.
	73 SHEETS	55	0711.2R & 1011.1BR	COOK	741 649
			CONTRACT NO. 60999		
FED. ROAD DIST. NO. 1 ILLINOIS FED. AID PROJECT					