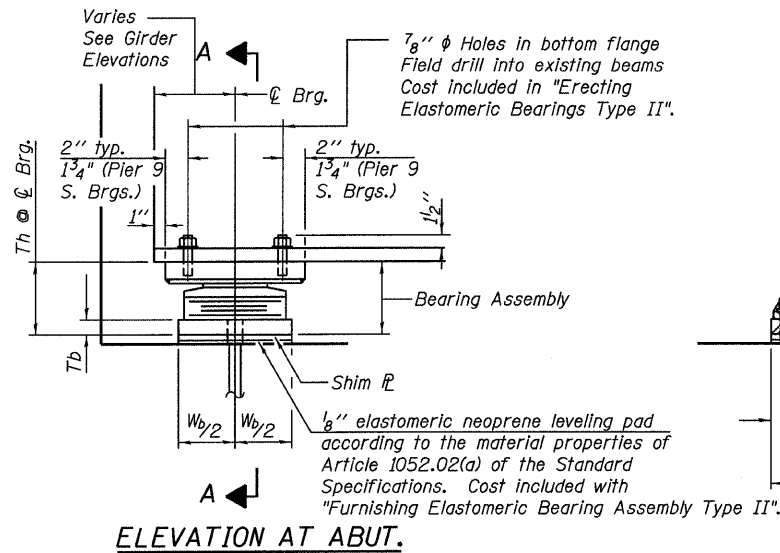
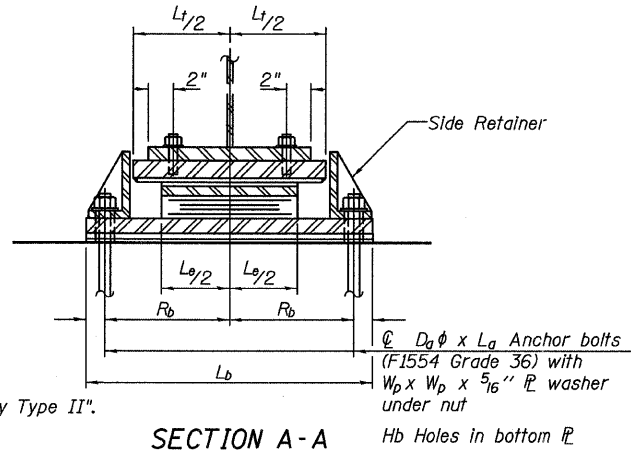


STATE OF ILLINOIS
DEPARTMENT OF TRANSPORTATION

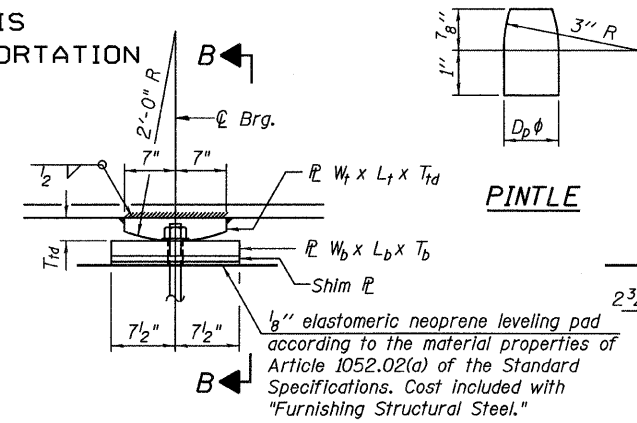


ELEVATION AT ABUT.



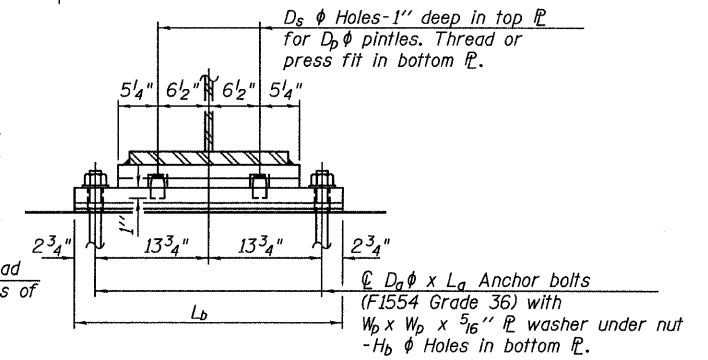
SECTION A-A

TYPE II ELASTOMERIC EXP. BRG.



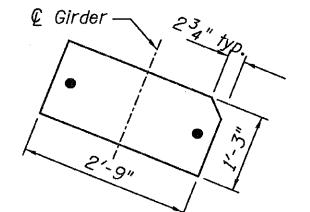
PINTLE

ELEVATION AT PIER



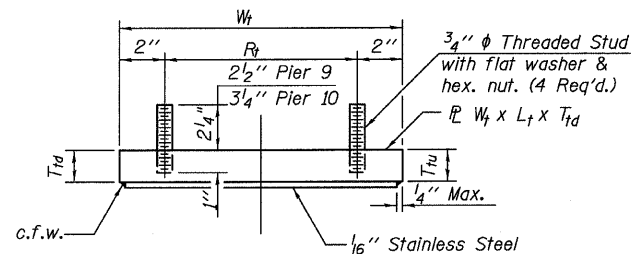
SECTION B-B

FIXED BEARING ASSEMBLY - PIER II

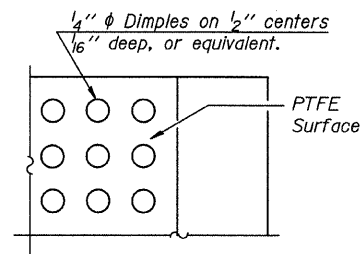


CLIPPING OF BOT. P

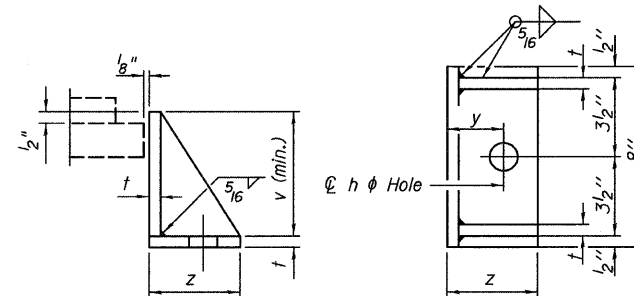
(At Girders P & NG13, Girder P shown)



TOP BEARING ASSEMBLY



PLAN-PTFE SURFACE



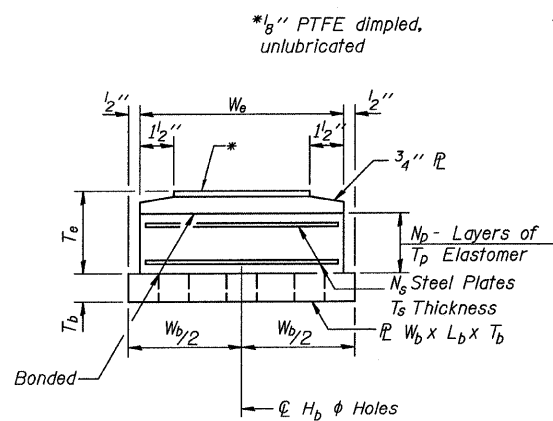
SIDE RETAINER - PIER 9 (SOUTH & NORTH)

Equivalent rolled angle with stiffeners will be allowed in lieu of welded plates.

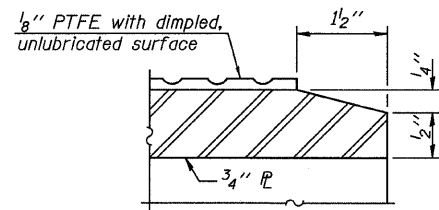
Notes:
Anchor bolts shall be ASTM F1554 all-thread (or an Engineer-approved alternate material) of the grade(s) and diameter(s) specified. ASTM A307 Grade C anchor bolts may be used in lieu of ASTM F1554 Grade 36 (Fy=36ksi). The corresponding specified grade of AASHTO M314 anchor bolts may be used in lieu of ASTM F1554.
Anchor bolts at fixed bearings may be either cast in place or installed in holes drilled after the supported member is in place.
Anchor bolts for Type II bearings shall be placed in holes drilled in the concrete through holes in the bottom bearing plate after members are in place. Side retainers shall be placed after bolts are installed.
Drilled and set anchor bolts shall be installed according to Article 521.06 of the Standard Specifications.
Side retainers and other steel members required for the bearing assembly are furnished under a separate contract. Installation of these items is included in the cost of "Erecting Elastomeric Bearing Assembly, Type II".
The 1/8" PTFE sheet shall be bonded directly to the top steel plate with a two-component, medium viscosity epoxy resin, conforming to the requirements of the Federal Specification MMM-A-134, Type I. The bond agent shall be applied on the full area of the contact surfaces.
Bonding of 1/8" PTFE sheet during vulcanizing process will be permitted provided the process and method of adjusting assembly height is approved by the Engineer.

The structural steel plates of the Bearing Assembly shall conform to the requirements of AASHTO M 270 Grade 36.

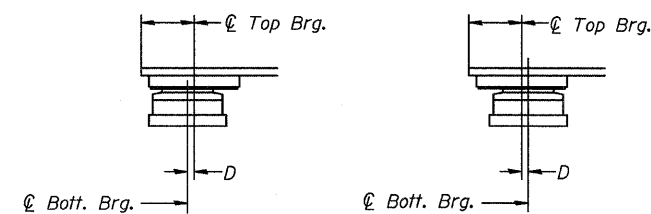
For bearing dimensions refer to the table on sheet 50.



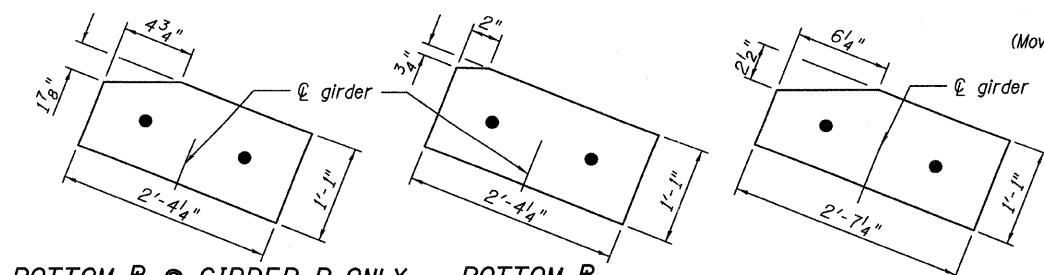
BOTTOM BEARING ASSEMBLY



SECTION THRU PTFE



BELOW 50°F. (Move bott. brg. away from fixed brg.)
ABOVE 50°F. (Move bott. brg. toward fixed brg.)
SETTING ANCHOR BOLTS AT EXP. BRG.
D=1/8" per each 100' of expansion for every 15° temp. change from the normal temp. of 50°F.



BOTTOM P @ GIRDER P ONLY

BOTTOM P

CLIPPING P'S @ S. PIER 9

CLIPPING P'S @ N. PIER 9

BILL OF MATERIAL

Item	Unit	Total
Erecting Elastomeric Bearing Assembly Type II	Each	20
Anchor Bolts, 1"	Each	40
Anchor Bolts, 1/2"	Each	8

ELASTOMERIC BEARING TYPE II
STRUCTURE NO. 016-3240

TYLIN INTERNATIONAL

DESIGNED	- DY, LS	REVISIONS	
CHECKED	- AMD, LS	NAME	DATE
DRAWN	- DY, LS		
CHECKED	- AMD, LS		
DATE	- 03/25/2011		

SHEET NO. 51	F.A.I RTE.	SECTION	COUNTY	TOTAL SHEETS	SHEET NO.
	73 SHEETS	55	0711.2R & 1011.1BR	COOK	741
FED. ROAD DIST. NO. 1			ILLINOIS FED. AID PROJECT		
CONTRACT NO. 60999					