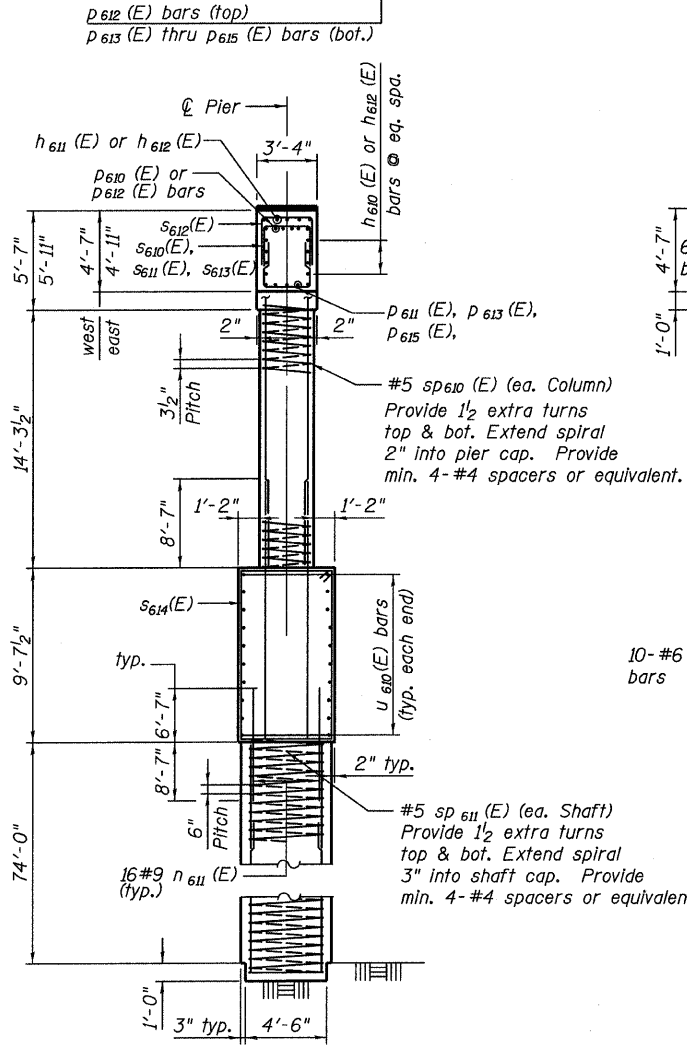
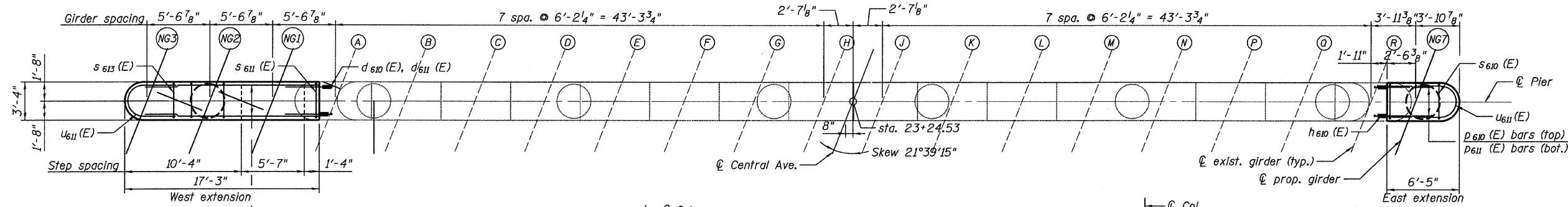


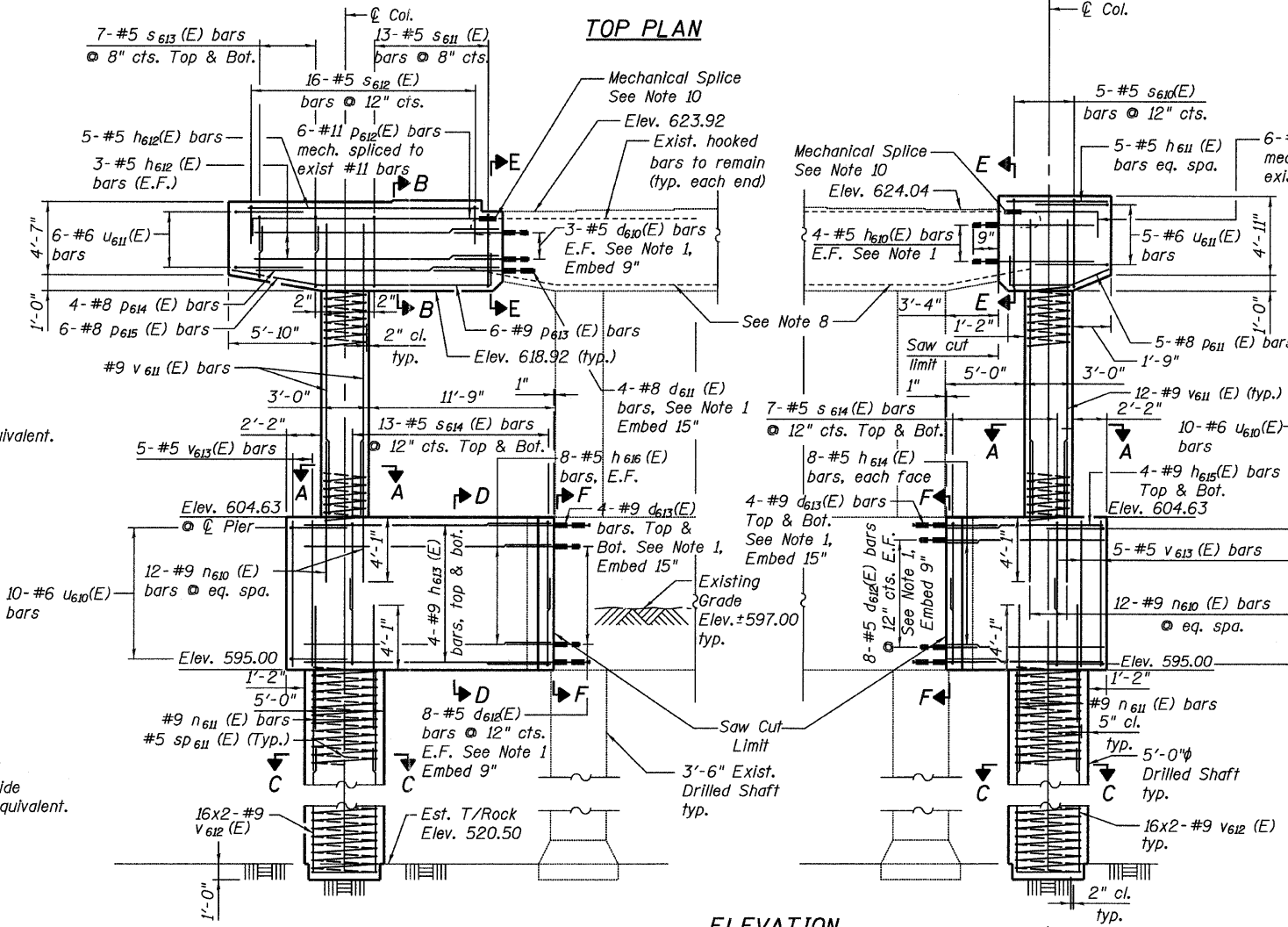
STATE OF ILLINOIS
DEPARTMENT OF TRANSPORTATION



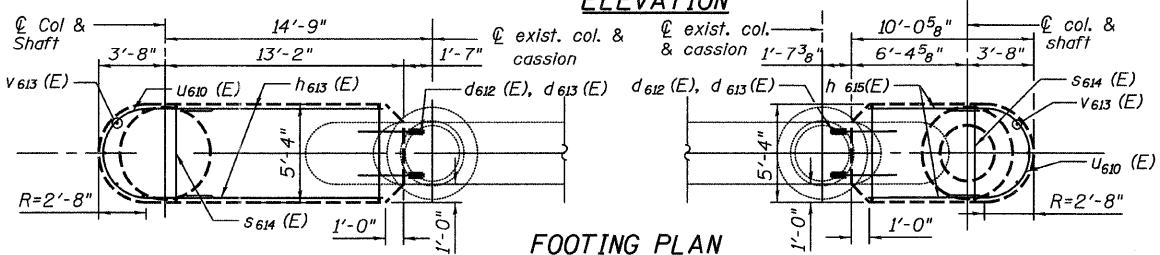
TYPICAL END VIEW

BRIDGE SEAT ELEVATION

Girder Line	Seat Elevation
A	623.92
NG3	624.50
NG2	624.51
NG1	624.62
NG7	624.84



ELEVATION



FOOTING PLAN

NOTES

1. Epoxy grout $d_{610}(E)$ bars according to Article 584 of the Standard Specifications. Drill to miss existing reinforcement. The epoxy grout and method of application shall be approved by the Engineer. All drilling and grouting of rebar to be included with the cost of "Reinforcement Bars, Epoxy Coated."
2. Space reinforcement in pier cap to miss anchor bolts.
3. All edges shall have standard $\frac{3}{4}$ " chamfers excepts as noted.
4. For Sections A, B, C, D, E & F see sheet 58.
5. For Bill of Material see sheet 58.
6. E.F. - denotes Each Face.
7. eq. spa. - denotes equally spaced.
8. Existing reinforcement shall be cleaned and incorporated into new construction. Cost included with Concrete Removal.
9. Cast steps monolithically with cap.
10. Prior to installation of Mechanical Splice, cut in field hook on existing reinforcement to be spliced. Cost included with Mechanical Splitters.

PIER 8 WIDENING
STRUCTURE NO. 016-3240

TYLIN INTERNATIONAL

DESIGNED	REVISIONS
- DY, LS	NAME
CHECKED - AMD, LS	DATE
DRAWN - DY, LS	
CHECKED - AMD, LS	
DATE - 03/25/2011	

SHEET NO. 57	F.A.I. RTE.	SECTION	COUNTY	TOTAL SHEETS	SHEET NO.
	73 SHEETS	55	0711.2R & 1011.1BR	COOK	741 660
			CONTRACT NO. 60999		
FED. ROAD DIST. NO. 1 ILLINOIS FED. AID PROJECT					