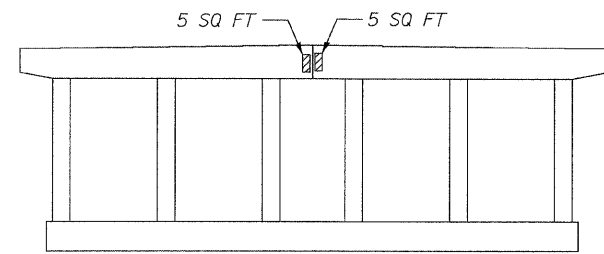
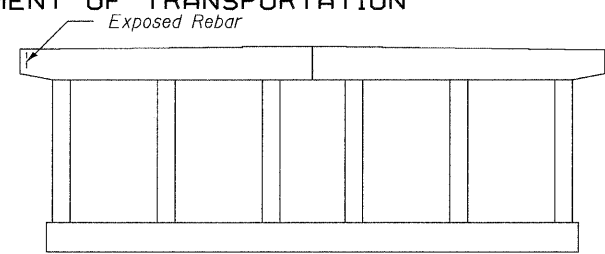


STATE OF ILLINOIS
DEPARTMENT OF TRANSPORTATION

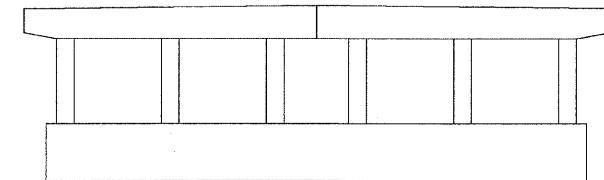


NORTH ELEVATION
(Looking South)

PIER 7

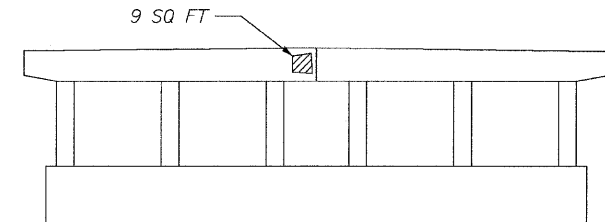


SOUTH ELEVATION
(Looking North)

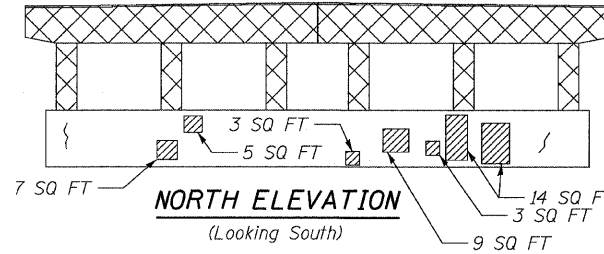


NORTH ELEVATION
(Looking South)

PIER 8

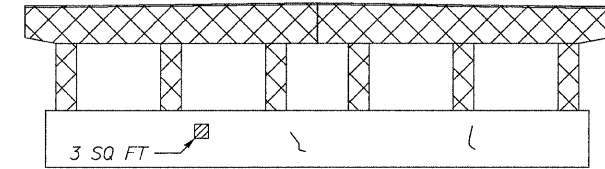


SOUTH ELEVATION
(Looking North)

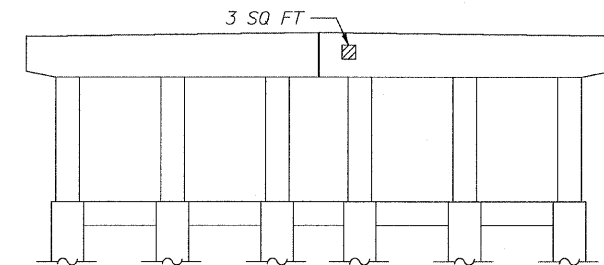


NORTH ELEVATION
(Looking South)

PIER 9

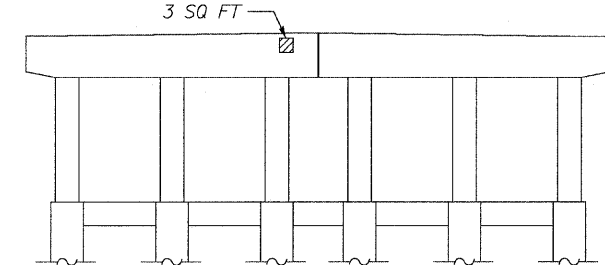


SOUTH ELEVATION
(Looking North)

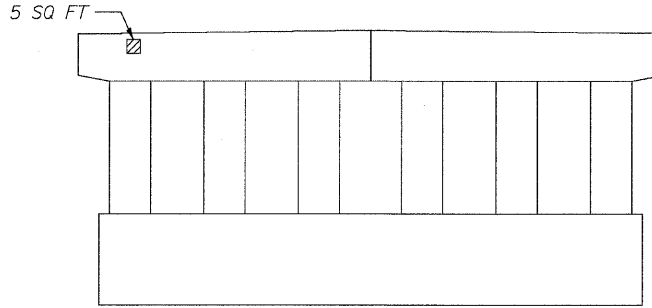


NORTH ELEVATION
(Looking South)

PIER 10

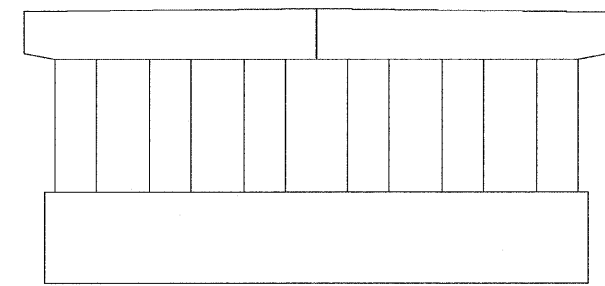


SOUTH ELEVATION
(Looking North)



NORTH ELEVATION
(Looking South)

PIER 11



SOUTH ELEVATION
(Looking North)

BILL OF MATERIAL

ITEM	UNIT	TOTAL
Epoxy Crack Injection	FOOT	66
Structural Repair of Concrete (Depth Greater Than 5 inches)	SQ FT	88.0

LEGEND

- Removal
- Indicates Structural Repair of Concrete
- Indicates Epoxy Crack Injection

**SUBSTRUCTURE REPAIRS
STRUCTURE NO. 016-3240**

TYLIN INTERNATIONAL

	DESIGNED - DY, LS	REVISIONS	
		NAME	DATE
CHECKED - AMD, LS			
DRAWN - DY, LS			
CHECKED - AMD, LS			
DATE - 03/25/2011			

SHEET NO. 66	F.A.I. RTE.	SECTION	COUNTY	TOTAL SHEETS	SHEET NO.
	55	0711.2R & 1011.1BR	COOK	741	669
73 SHEETS	CONTRACT NO. 60999				
FED. ROAD DIST. NO. 1		ILLINOIS	FED. AID PROJECT		

p:\01345\structure\C3_North_Approach_016-3240\155c3subrep.dgn 2:32:25 PM 4/28/2011