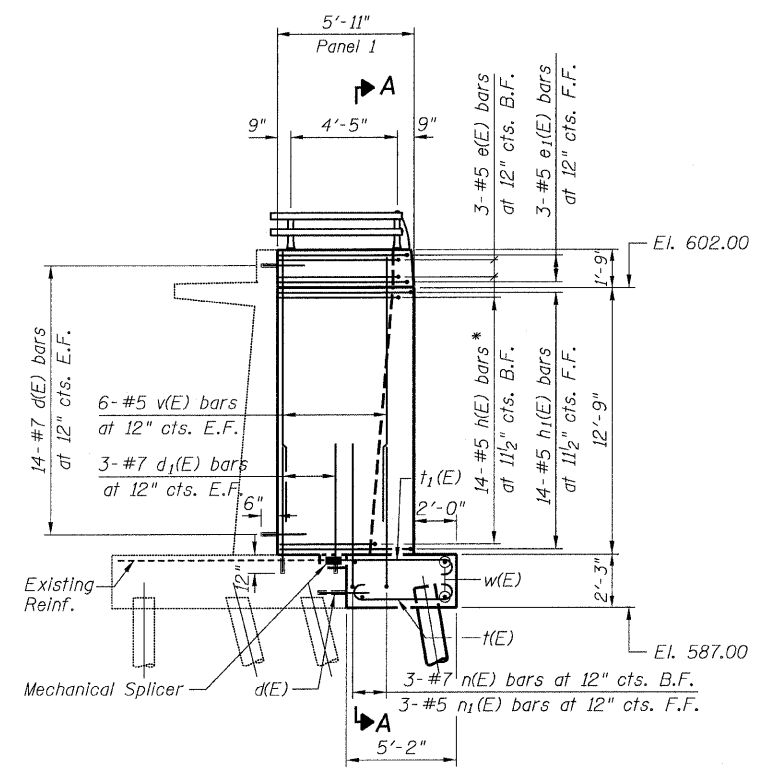


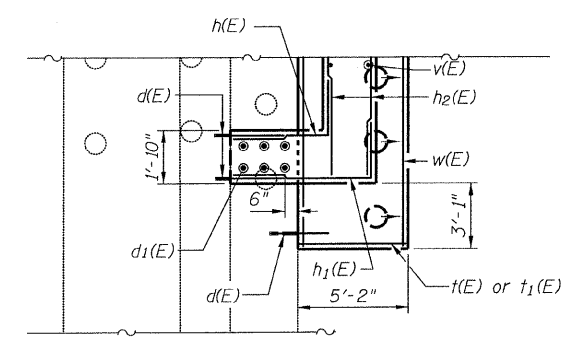
STATE OF ILLINOIS  
DEPARTMENT OF TRANSPORTATION

**LEGEND**

\* Cut to fit in field.  
F.F. - denotes Front Face  
B.F. - denotes Back Face  
E.F. - denotes Each Face



**ELEVATION**  
(End View)



**FOOTING PLAN**

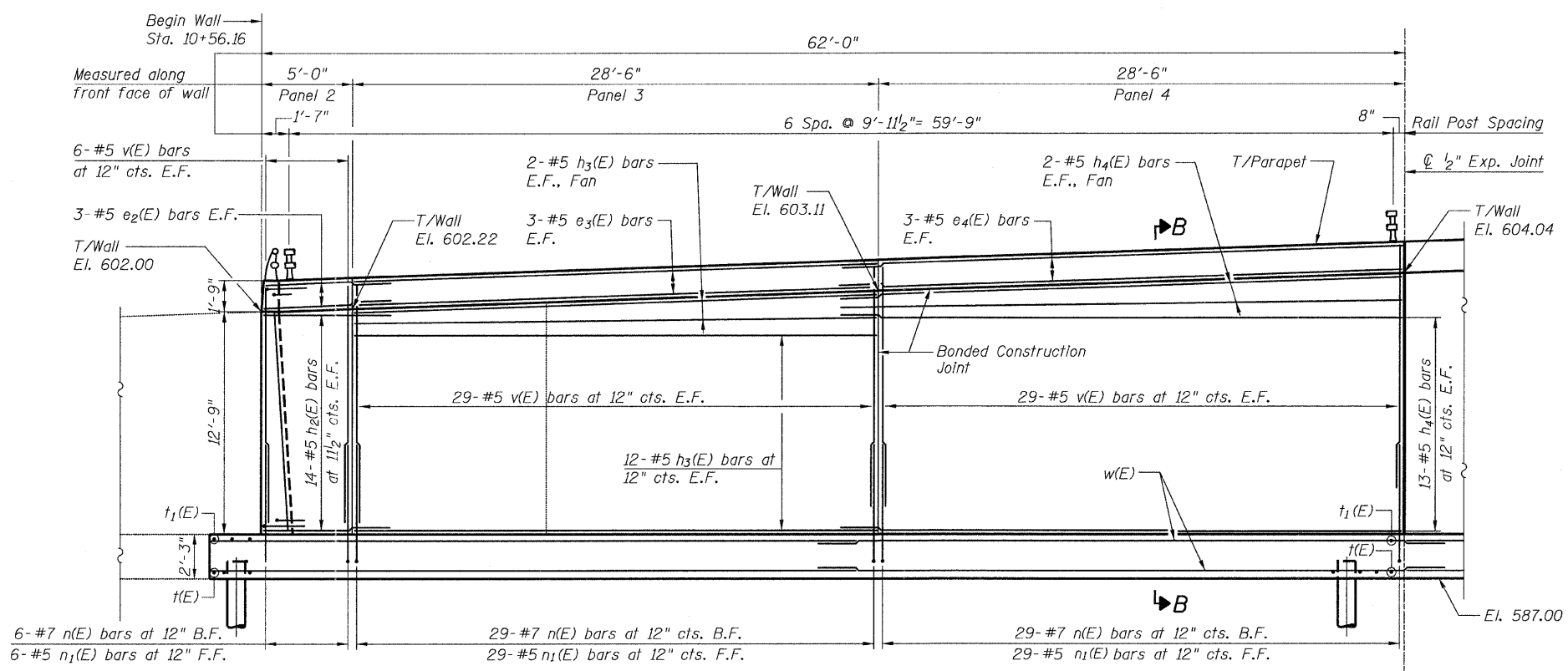
**NOTES**

1. For expansion and construction joint details, see sheet 8.
2. For minimum bar laps, see sheet 8.
3. For reinforcement bar schedule, see sheet 9.
4. For light pole support details, see sheet 9.
5. Bars indicated thus 12x3-#5 etc., indicates 12 lines of bars with 3 lengths per line.
6. Place bottom reinforcement in wall footing to miss piles.
7. Existing reinforcement shall be cleaned and incorporated into new construction. Cost included with Concrete Removal.

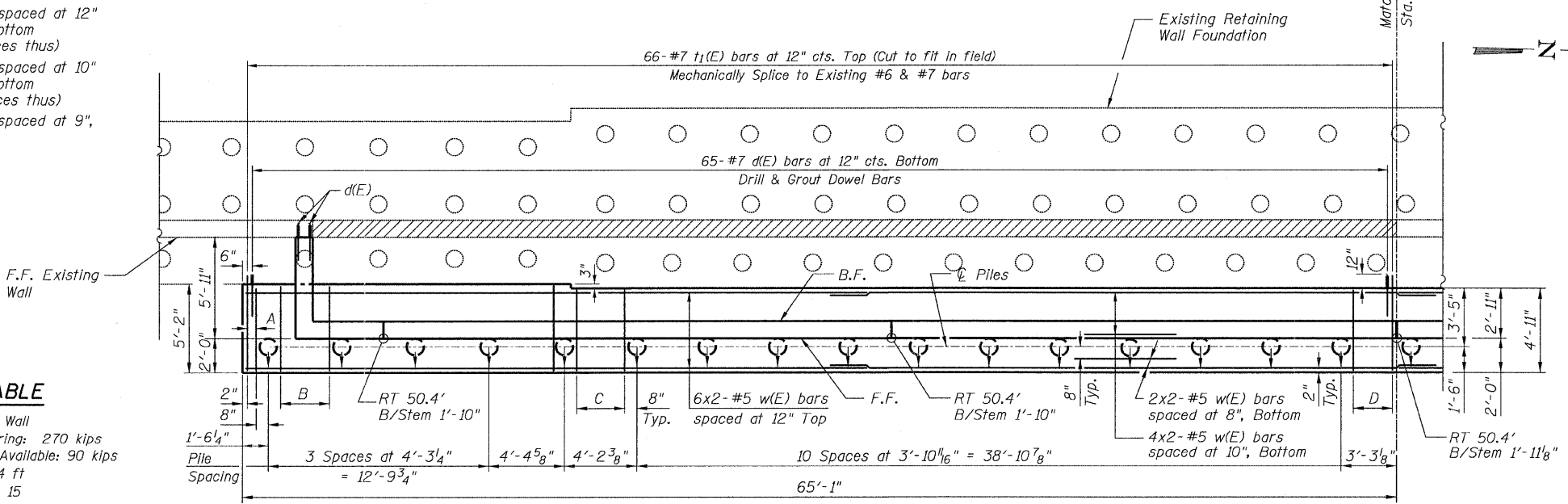
**PILE DATA TABLE**

Type: 12"  $\phi$  x 0.25" Wall  
Nominal Required Bearing: 270 kips  
Allowable Resistance Available: 90 kips  
Estimated Length: 34 ft  
No. Production Piles: 15  
No. Test Piles: 1

- ⊙ Proposed Pile
- Existing Pile



**ELEVATION**



**FOOTING PLAN**

**PLAN & ELEVATION**  
**STA. 10+56.16 TO 11+18.16**  
**STRUCTURE NO. 016-W821**

<b>TYLIN INTERNATIONAL</b>	DESIGNED - MMB	REVISIONS		SHEET NO. 4  16 SHEETS	F.A.I. RTE.	SECTION	COUNTY	TOTAL SHEETS	SHEET NO.
	CHECKED - AMD,	NAME	DATE		55	0711.2R & 1011.1BR	COOK	741	680
	DRAWN - MMB				CONTRACT NO. 60999				
	CHECKED - AMD, DATE - 03/25/2011				FED. ROAD DIST. NO. 1 ILLINOIS FED. AID PROJECT				

4/25/12 PM  
p:\01345\structure\Retaining Wall\11ret55p1lev1.dgn  
5/10/2011