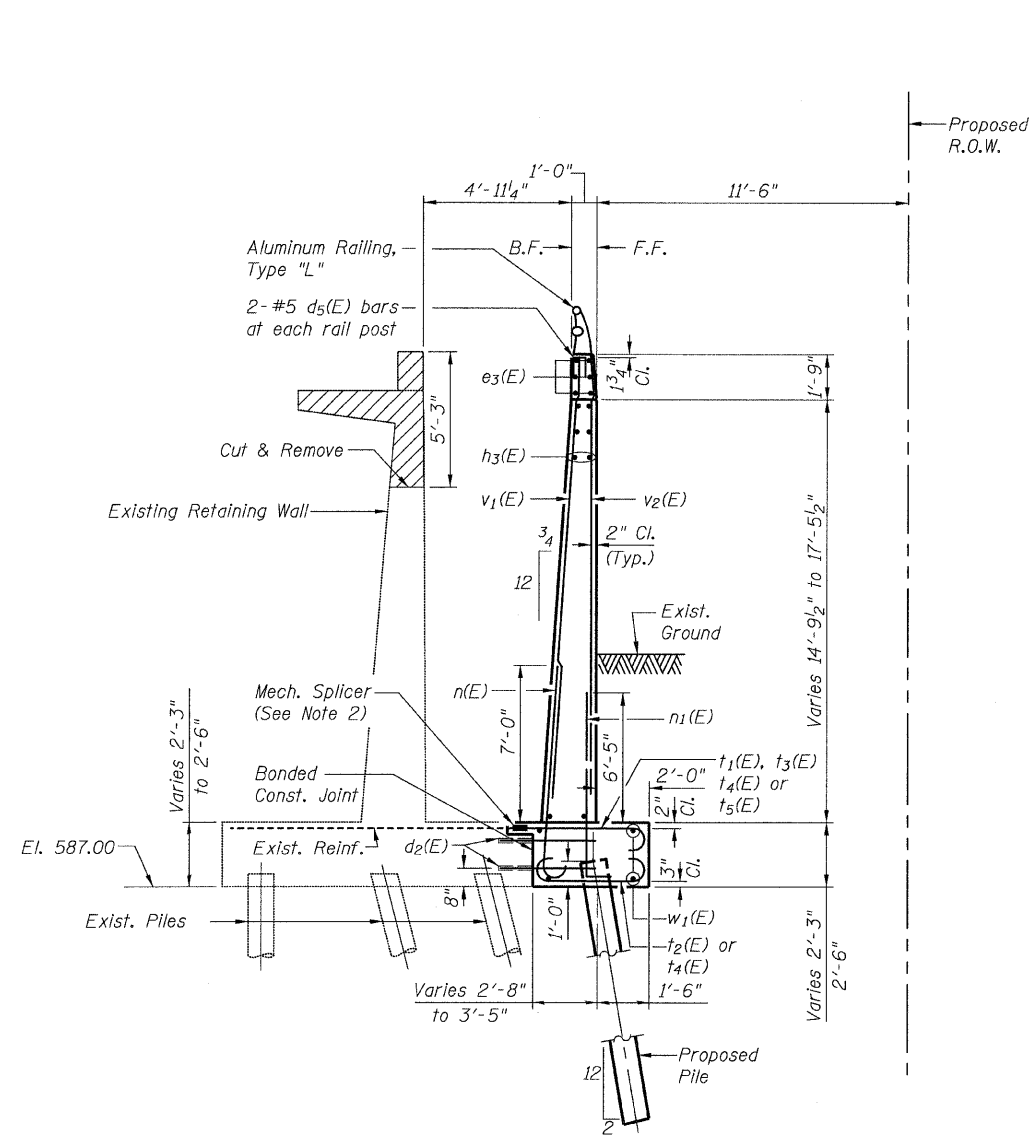
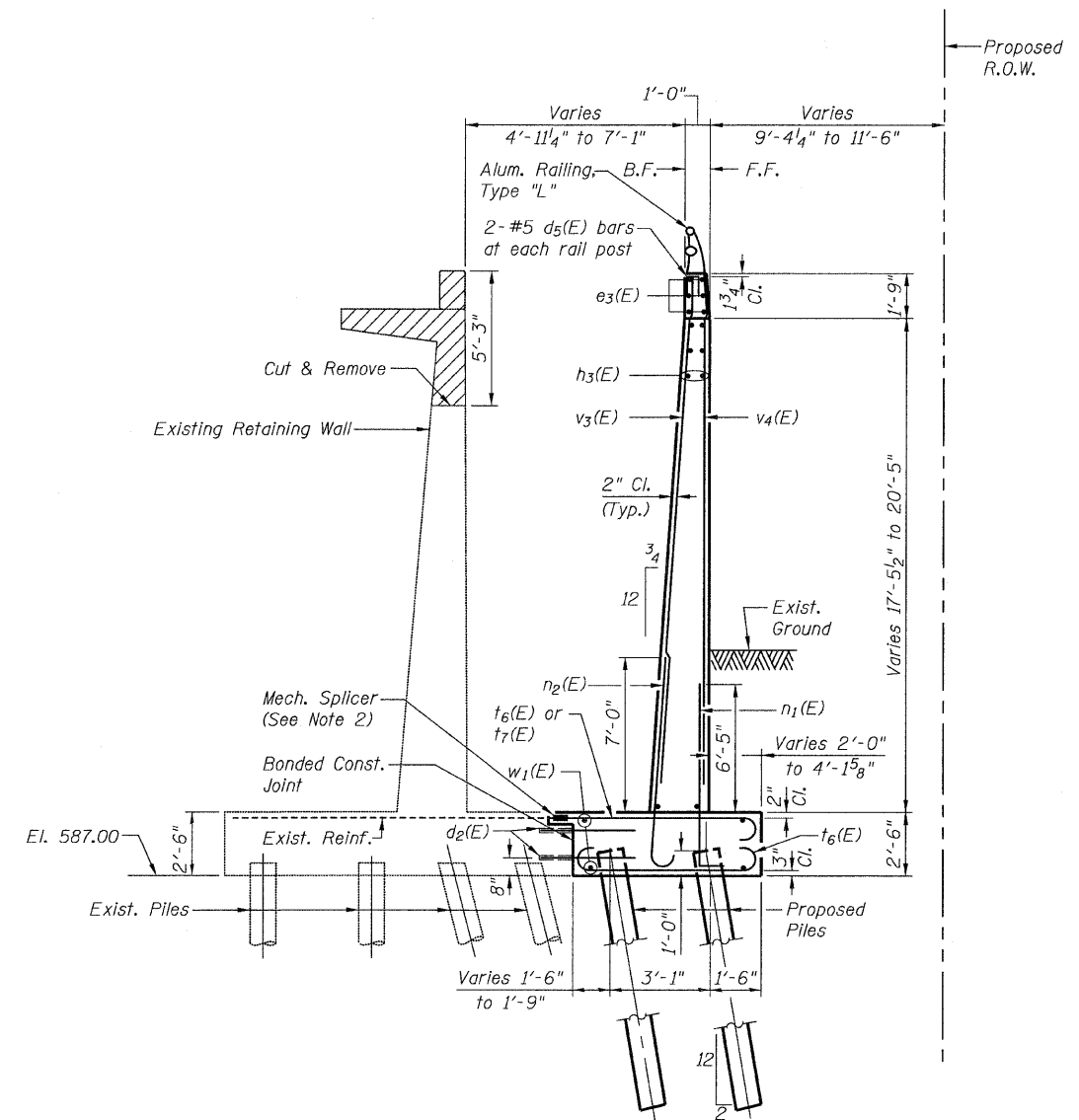


STATE OF ILLINOIS
DEPARTMENT OF TRANSPORTATION



SECTION C-C

Sta. 11+18.16 to Sta. 12+03.66



SECTION D-D

Sta. 12+03.66 to Sta. 12+89.16

NOTES

1. Epoxy grout $d_2(E)$ bars according to Article 584 of the Standard Specifications. Drill to miss existing reinforcement. The epoxy grout and method of application shall be approved by the Engineer. All work shall be included in the Unit Bid Price for "Reinforcement Bars, Epoxy Coated."
2. Localized concrete removal as required to permit mechanical splicing of bars shown. Cost included with Concrete Removal.
3. Existing reinforcement shall be cleaned and incorporated into new construction. Cost included with Concrete Removal.

LEGEND

- * Cut to fit in field.
- F.F. - denotes Front Face
- B.F. - denotes Back Face
- E.F. - denotes Each Face

Concrete Removal

**WALL CROSS-SECTIONS
AND DETAILS 2
STRUCTURE NO. 016-W821**

TYLIN INTERNATIONAL	DESIGNED - MMB	REVISIONS	
	CHECKED - AMD,	NAME	DATE
	DRAWN - MMB		
	CHECKED - AMD,		
	DATE - 03/25/2011		

SHEET NO. 9 16 SHEETS	F.A.I. RTE.	SECTION	COUNTY	TOTAL SHEETS	SHEET NO.
	55	0711.2R & 1011.1BR	COOK	741	685
CONTRACT NO. 60999					
FED. ROAD DIST. NO. 1 ILLINOIS FED. AID PROJECT					

5/10/2011 4:25:48 PM p:\01345\structure\Retaining Wall\ret55walsecdt2.dgn