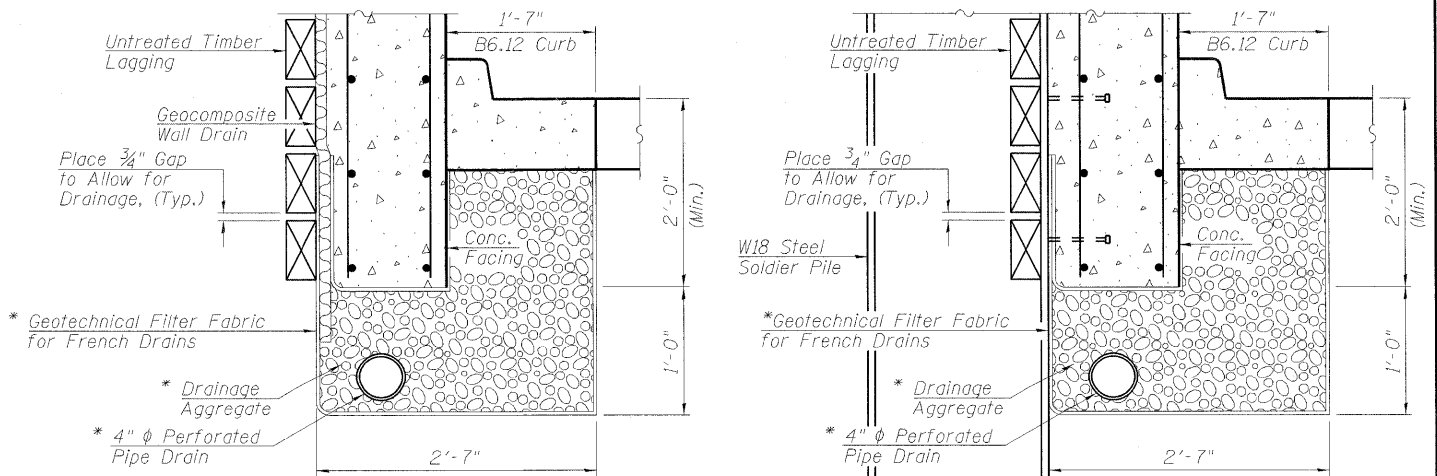
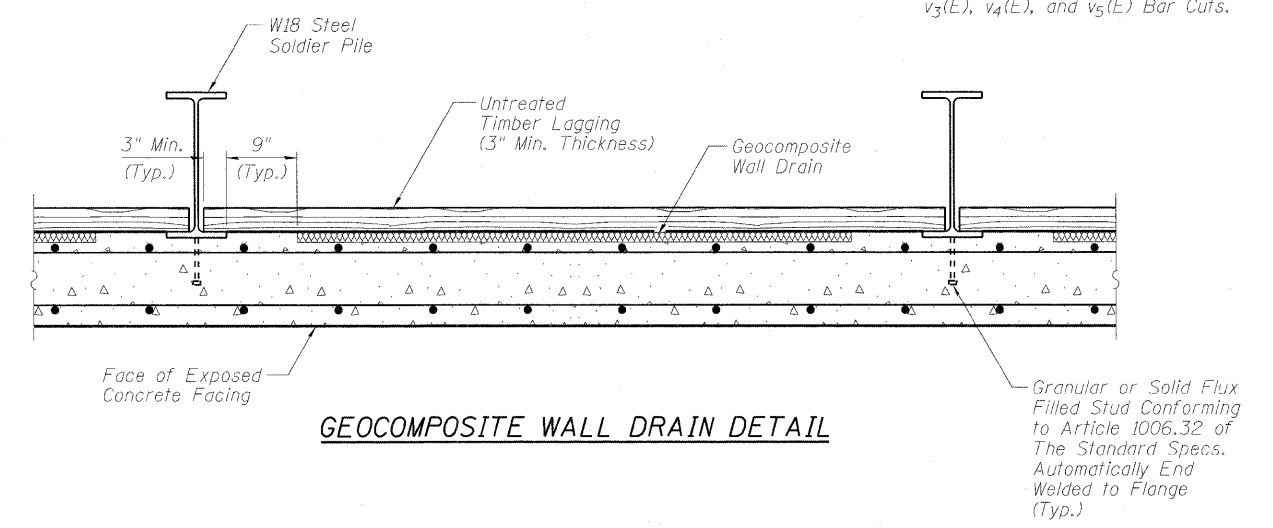
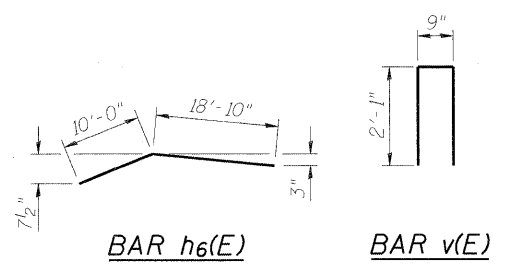
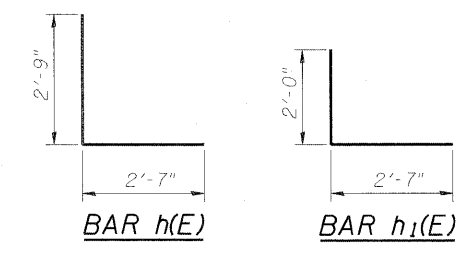


SOLDIER PILE WALL INFORMATION

Pile	Station	Offset	Pile Section	Top of Pile Elevation	Bottom of Pile Elevation	Pile Length (Feet)	No. Stud Shear Connectors
1	80+93.14	27.75 RT	W18x65	643.602	630.220	13.383	4
2	81+02.64	27.70 RT	W18x65	644.162	629.280	14.882	4
3	81+12.14	27.64 RT	W18x65	644.721	628.340	16.381	5
4	81+21.64	27.59 RT	W18x65	645.281	628.400	16.880	5
5	81+31.14	27.54 RT	W18x65	645.840	627.461	18.380	6
6	81+40.64	27.49 RT	W18x65	646.400	626.021	20.379	6
7	81+50.14	27.44 RT	W18x65	646.968	626.104	20.863	7
8	81+59.64	27.40 RT	W18x65	647.537	625.191	22.345	7
9	81+69.14	27.35 RT	W18x65	648.106	625.279	22.828	8
10	81+74.14	27.33 RT	W18x76	648.406	624.325	24.081	8
11	81+81.87	27.30 RT	W18x76	648.869	624.396	24.473	8
12	81+89.59	27.27 RT	W18x76	649.332	624.467	24.865	9
13	81+97.32	27.23 RT	W18x76	649.794	624.566	25.228	9
14	82+05.05	27.20 RT	W18x76	650.255	624.679	25.576	10
15	82+12.78	27.18 RT	W18x76	650.716	624.791	25.925	10
16	82+20.50	27.15 RT	W18x76	651.177	624.904	26.273	10
17	82+28.23	27.12 RT	W18x76	651.638	625.017	26.621	11
18	82+35.96	27.10 RT	W18x76	652.099	625.130	26.969	11
19	82+43.69	27.07 RT	W18x76	652.446	625.251	27.195	11
20	82+51.41	27.05 RT	W18x76	652.344	625.405	26.939	11
21	82+59.14	27.03 RT	W18x76	652.242	625.559	26.684	11
22	82+64.14	27.01 RT	W18x71	652.177	625.658	26.518	11
23	82+71.02	26.99 RT	W18x71	652.086	625.795	26.291	10
24	82+77.89	26.98 RT	W18x71	651.995	625.932	26.063	10
25	82+84.77	25.96 RT	W18x71	651.904	626.069	25.836	10
26	82+91.64	26.95 RT	W18x71	651.814	626.206	25.608	10
27	82+98.52	26.93 RT	W18x71	651.720	626.296	25.424	9
28	83+05.39	26.92 RT	W18x71	651.626	626.384	25.242	9
29	83+12.27	26.91 RT	W18x71	651.532	626.472	25.059	9
30	83+19.14	26.90 RT	W18x71	651.437	626.561	24.877	9
31	83+24.14	26.89 RT	W18x65	651.369	627.625	23.744	9
32	83+31.87	26.88 RT	W18x65	651.263	627.724	23.539	9
33	83+39.59	26.87 RT	W18x65	651.158	627.824	23.334	8
34	83+47.32	26.86 RT	W18x65	651.066	627.880	23.186	8
35	83+55.05	26.85 RT	W18x65	650.982	627.911	23.071	8
36	83+62.78	26.84 RT	W18x65	650.899	627.942	22.957	8
37	83+70.50	26.84 RT	W18x65	650.815	627.973	22.842	8
38	83+78.23	26.84 RT	W18x65	650.731	628.004	22.727	8
39	83+85.96	26.83 RT	W18x65	650.648	628.035	22.613	8
40	83+93.69	26.83 RT	W18x65	650.562	628.091	22.471	7
41	84+01.41	26.83 RT	W18x65	650.469	628.250	22.219	7
42	84+09.14	26.83 RT	W18x65	650.375	628.409	21.966	7
43	84+14.14	26.83 RT	W18x55	650.314	629.512	20.802	7
44	84+23.64	26.84 RT	W18x55	650.199	629.708	20.492	6
45	84+33.14	26.84 RT	W18x55	650.085	631.404	18.681	6
46	84+42.64	26.85 RT	W18x55	649.970	631.594	18.376	6
47	84+52.14	26.86 RT	W18x55	649.855	631.673	18.181	6
48	84+61.64	26.87 RT	W18x55	649.740	632.753	16.987	5
49	84+71.14	26.88 RT	W18x55	649.625	632.833	16.793	5
50	84+80.64	26.89 RT	W18x55	649.511	633.912	15.598	5
51	84+89.64	26.91 RT	W18x55	649.402	633.988	15.414	5

**BILL OF MATERIAL
CAST-IN-PLACE CONCRETE**

Bar	No.	Size	Length	Shape	
h(E)	13	#5	5'-4"	┌	
h ₁ (E)	13	#5	4'-7"	┌	
h ₂ (E)	64	#5	28'-10"	—	
h ₃ (E)	34	#5	26'-0"	—	
h ₄ (E)	88	#5	32'-2"	—	
h ₅ (E)	42	#5	29'-4"	—	
h ₆ (E)	2	#5	28'-10"	└	
h ₇ (E)	46	#5	22'-3"	—	
h ₈ (E)	22	#5	19'-5"	—	
v(E)	268	#4	4'-11"	┌	
v ₁ (E)	106	#4	13'-1"	—	
v ₂ (E)	48	#4	20'-6"	—	
v ₃ (E)	14	#4	23'-2"	—	
v ₄ (E)	40	#4	20'-9"	—	
v ₅ (E)	60	#4	17'-0"	—	
Concrete Structures				Cu. Yd.	128.7
Reinforcement Bars, Epoxy Coated				Pound	12,710



Note:
See Sheets S3-S6 for v₁(E), v₂(E), v₃(E), v₄(E), and v₅(E) Bar Cuts.

**PIPE UNDERDRAIN DETAIL
BETWEEN SOLDIER PILES**

**PIPE UNDERDRAIN DETAIL
AT SOLDIER PILES**