

**CONTROL POINT #1**

FO BRASS DISK  
 STA. 225+12/0  
 N 2043796.0639  
 E 1031657.3080

**CONTROL POINT #2**

MAG NAIL  
 STA. 232+36/22' L  
 N 2043818.0575  
 E 1032380.7149

**CONTROL POINT #3**

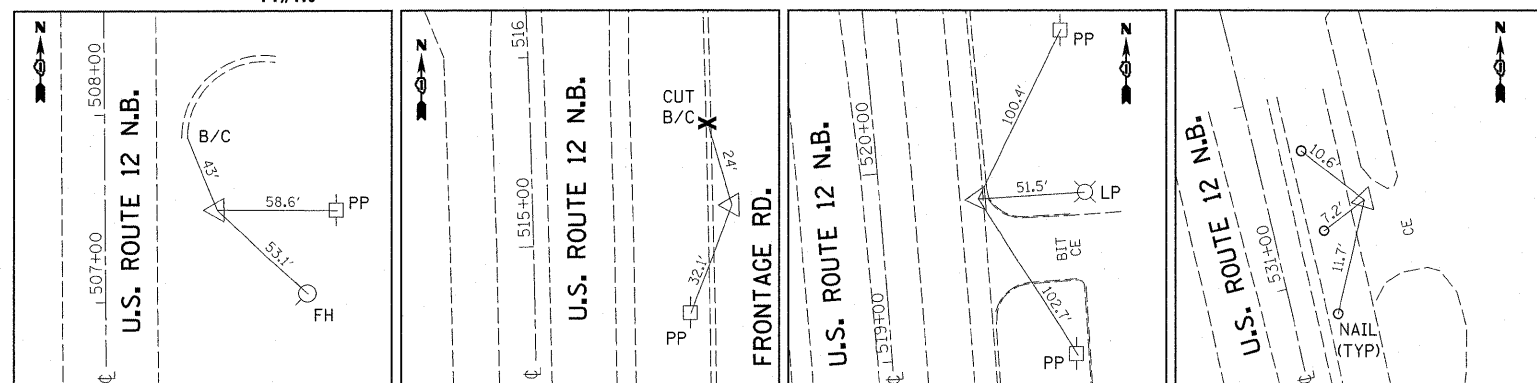
EXIST. CURVE C2  
 PI STA. = 217+47.06  
 $\Delta = 23^\circ 20' 00''$  (RT)  
 D =  $1^\circ 30' 08''$   
 R = 3,814.15'  
 T = 787.56'  
 L = 1,553.29'  
 E = 80.46'  
 e = -----  
 T.R. = -----  
 S.E. RUN = -----  
 P.C. STA. = 209+59.50  
 P.T. STA. = 225+12.79

MAG NAIL  
 STA. 238+17/38' R  
 N 2043757.1668  
 E 1032961.5012

**CONTROL POINT #4**

MAG NAIL  
 STA. 243+51/36' R  
 N 2043756.4232  
 E 1033495.3182

EXIST. CURVE C1  
 PI STA. = 523+76.58  
 $\Delta = 14^\circ 27' 06''$  (LT)  
 D =  $0^\circ 43' 06''$   
 R = 7,977.33'  
 T = 1,011.43'  
 L = 2,012.13'  
 E = 63.86'  
 e = -----  
 T.R. = -----  
 S.E. RUN = -----  
 P.C. STA. = 513+65.14  
 P.T. STA. = 533+77.28



**CONTROL POINT #6**

MAG NAIL  
 STA. 507+54/51' R  
 N 2042856.0894  
 E 1032654.1228

**CONTROL POINT #7**

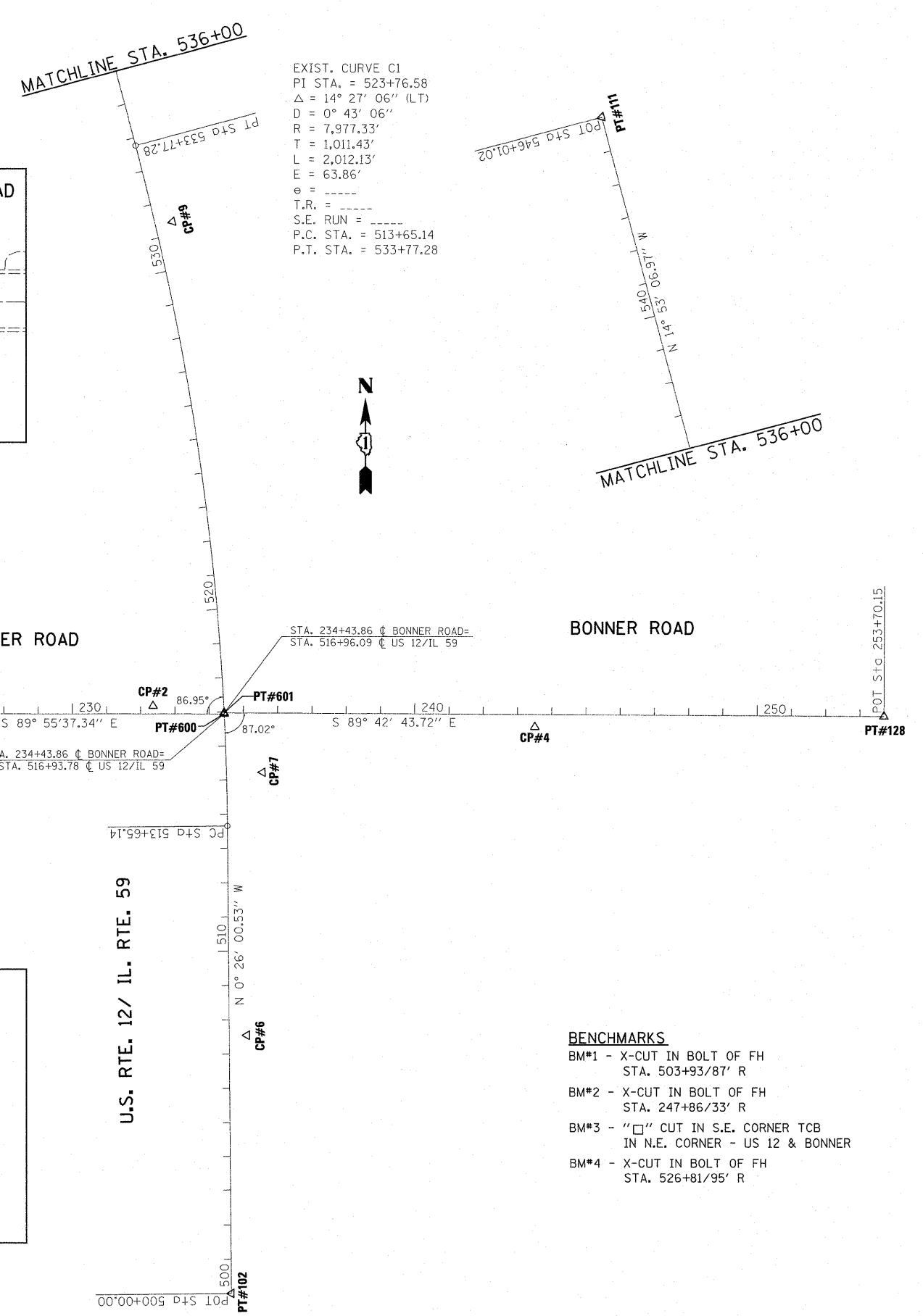
MAG NAIL IN S.E. CORNER  
 US 12 & BONNER  
 STA. 515+19/105' R  
 N 2043623.2065  
 E 1032700.5595

**CONTROL POINT #8**

MAG NAIL  
 STA. 519+82/52' R  
 N 2044087.3313  
 E 1032621.2215

**CONTROL POINT #9**

MAG NAIL  
 STA. 531+37/51' R  
 N 2045234.1634  
 E 1032438.0231



**BENCHMARKS**

- BM#1 - X-CUT IN BOLT OF FH  
 STA. 503+93/87' R
- BM#2 - X-CUT IN BOLT OF FH  
 STA. 247+86/33' R
- BM#3 - "□" CUT IN S.E. CORNER TCB  
 IN N.E. CORNER - US 12 & BONNER
- BM#4 - X-CUT IN BOLT OF FH  
 STA. 526+81/95' R

FILE NAME = P141309-sh-t-ATB.dgn	USER NAME = banks1	DESIGNED -	REVISED -	<b>STATE OF ILLINOIS DEPARTMENT OF TRANSPORTATION</b>	<b>U.S. ROUTE 12/IL. RTE. 59 @ BONNER ROAD ALIGNMENT, TIES AND BENCHMARKS</b>			F.A.P. RTE.	SECTION	COUNTY	TOTAL SHEETS	SHEET NO.			
	PLOT SCALE = 200.0000' / IN.	DRAWN -	REVISED -					334	OR-N	LAKE	40	8			
	PLOT DATE = 4/4/2011	CHECKED -	REVISED -					SCALE: 1" = 200'			SHEET NO. OF SHEETS STA. TO STA.			CONTRACT NO. 60L20	
		DATE -	REVISED -					ILLINOIS FED. AID PROJECT							