

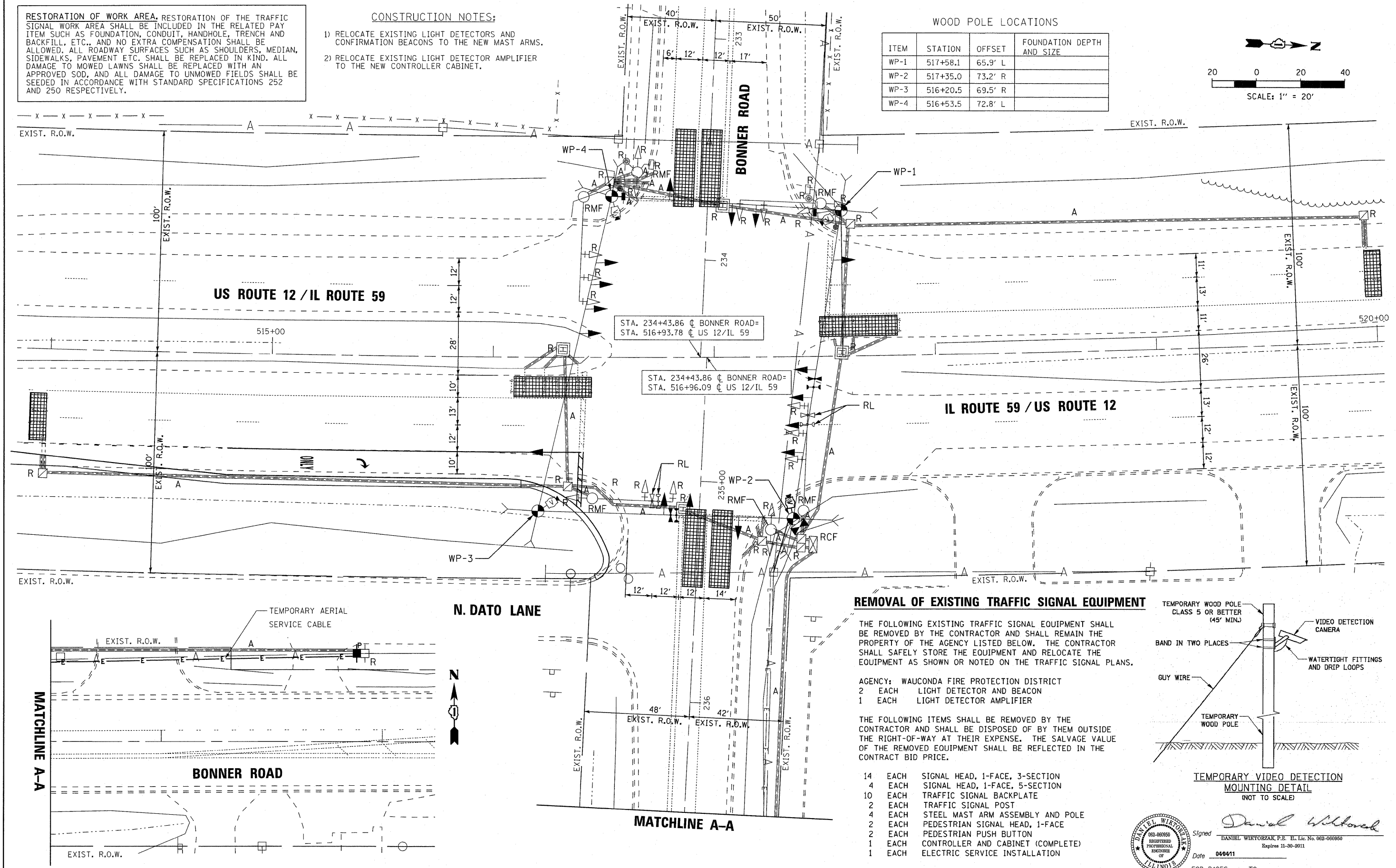
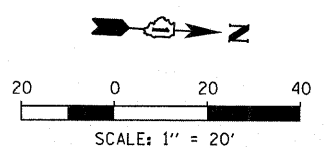
**RESTORATION OF WORK AREA.** RESTORATION OF THE TRAFFIC SIGNAL WORK AREA SHALL BE INCLUDED IN THE RELATED PAY ITEM SUCH AS FOUNDATION, CONDUIT, HANDHOLE, TRENCH AND BACKFILL, ETC., AND NO EXTRA COMPENSATION SHALL BE ALLOWED. ALL ROADWAY SURFACES SUCH AS SHOULDERS, MEDIAN, SIDEWALKS, PAVEMENT ETC. SHALL BE REPLACED IN KIND. ALL DAMAGE TO MOWED LAWNS SHALL BE REPLACED WITH AN APPROVED SOD, AND ALL DAMAGE TO UNMOWED FIELDS SHALL BE SEED IN ACCORDANCE WITH STANDARD SPECIFICATIONS 252 AND 250 RESPECTIVELY.

**CONSTRUCTION NOTES:**

- 1) RELOCATE EXISTING LIGHT DETECTORS AND CONFIRMATION BEACONS TO THE NEW MAST ARMS.
- 2) RELOCATE EXISTING LIGHT DETECTOR AMPLIFIER TO THE NEW CONTROLLER CABINET.

**WOOD POLE LOCATIONS**

ITEM	STATION	OFFSET	FOUNDATION DEPTH AND SIZE
WP-1	517+58.1	65.9' L	
WP-2	517+35.0	73.2' R	
WP-3	516+20.5	69.5' R	
WP-4	516+53.5	72.8' L	



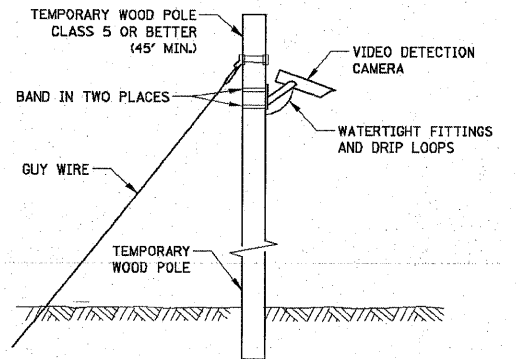
**REMOVAL OF EXISTING TRAFFIC SIGNAL EQUIPMENT**

THE FOLLOWING EXISTING TRAFFIC SIGNAL EQUIPMENT SHALL BE REMOVED BY THE CONTRACTOR AND SHALL REMAIN THE PROPERTY OF THE AGENCY LISTED BELOW. THE CONTRACTOR SHALL SAFELY STORE THE EQUIPMENT AND RELOCATE THE EQUIPMENT AS SHOWN OR NOTED ON THE TRAFFIC SIGNAL PLANS.

AGENCY: WAUCONDA FIRE PROTECTION DISTRICT  
 2 EACH LIGHT DETECTOR AND BEACON  
 1 EACH LIGHT DETECTOR AMPLIFIER

THE FOLLOWING ITEMS SHALL BE REMOVED BY THE CONTRACTOR AND SHALL BE DISPOSED OF BY THEM OUTSIDE THE RIGHT-OF-WAY AT THEIR EXPENSE. THE SALVAGE VALUE OF THE REMOVED EQUIPMENT SHALL BE REFLECTED IN THE CONTRACT BID PRICE.

- 14 EACH SIGNAL HEAD, 1-FACE, 3-SECTION
- 4 EACH SIGNAL HEAD, 1-FACE, 5-SECTION
- 10 EACH TRAFFIC SIGNAL BACKPLATE
- 2 EACH TRAFFIC SIGNAL POST
- 4 EACH STEEL MAST ARM ASSEMBLY AND POLE
- 2 EACH PEDESTRIAN SIGNAL HEAD, 1-FACE
- 2 EACH PEDESTRIAN PUSH BUTTON
- 1 EACH CONTROLLER PND CABINET (COMPLETE)
- 1 EACH ELECTRIC SERVICE INSTALLATION



Signed *Daniel Wirtorzak*  
 DANIEL WIRTORZAK, P.E., IL. Lic. No. 062-060850  
 Expires 11-30-2011  
 Date 04/04/11  
 FOR PAGES \_\_\_\_ TO \_\_\_\_

FILE NAME =	USER NAME = \$USERS	DESIGNED -	REVISED -	<b>STATE OF ILLINOIS DEPARTMENT OF TRANSPORTATION</b>	<b>BONNER ROAD @ US ROUTE 12 / IL ROUTE 59 EXISTING TRAFFIC SIGNAL EQUIPMENT REMOVAL AND TEMPORARY TRAFFIC SIGNAL INSTALLATION PLAN</b>	F.A.P. RTE.	SECTION	COUNTY	TOTAL SHEETS	SHEET NO.	
\$FILEL\$	PLOT SCALE = \$SCALES	DRAWN -	REVISED -			334	OR-N	LAKE	40	23	
	PLOT DATE = \$DATES	CHECKED -	REVISED -			CONTRACT NO. 60L20					
		DATE -	REVISED -			ILLINOIS FED. AID PROJECT					