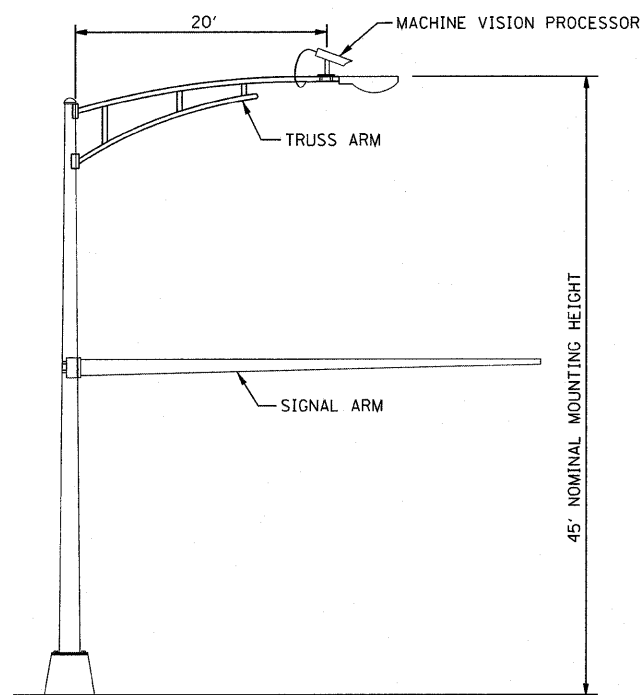
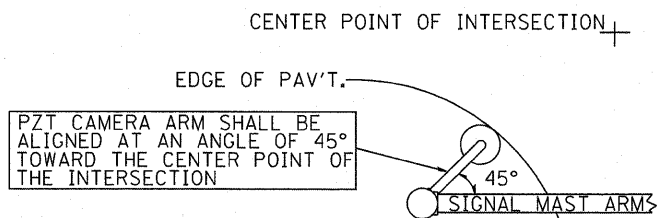


**TYPICAL VIDEO VEHICLE DETECTION SYSTEM**  
 (NOT TO SCALE)

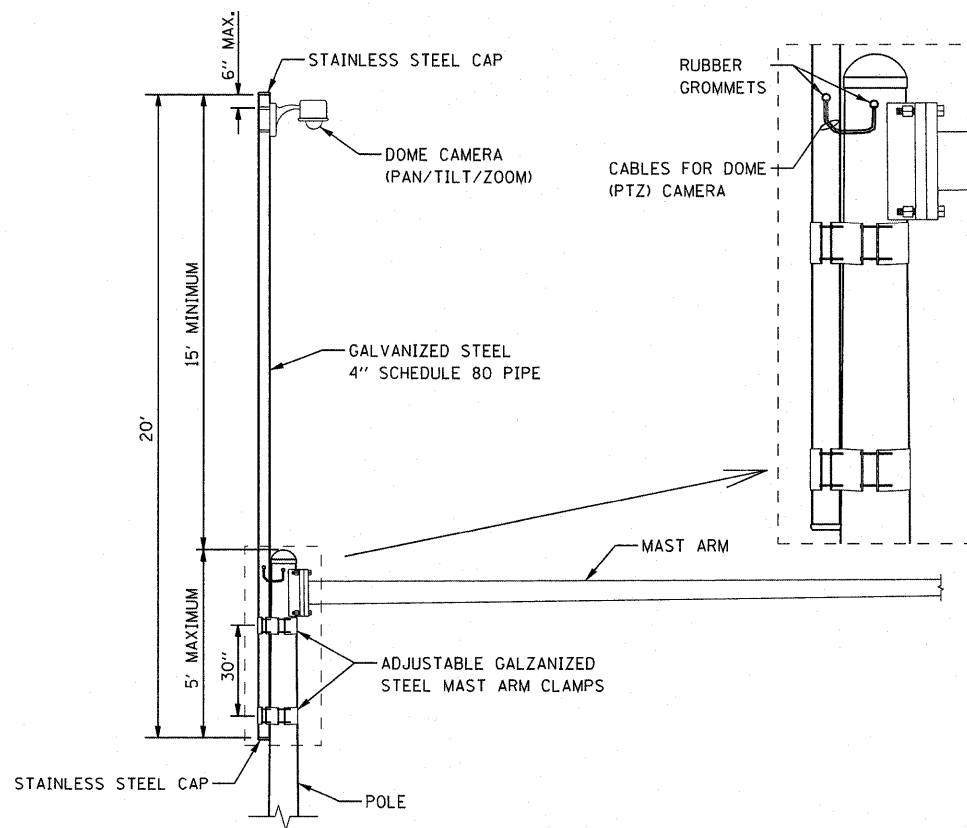
(4) MACHINE VISION PROCESSOR ASSEMBLIES AND BRACKETS ① ② ③ ④  
 POWER CABLE TO EACH MACHINE VISION PROCESSOR (24 VAC)



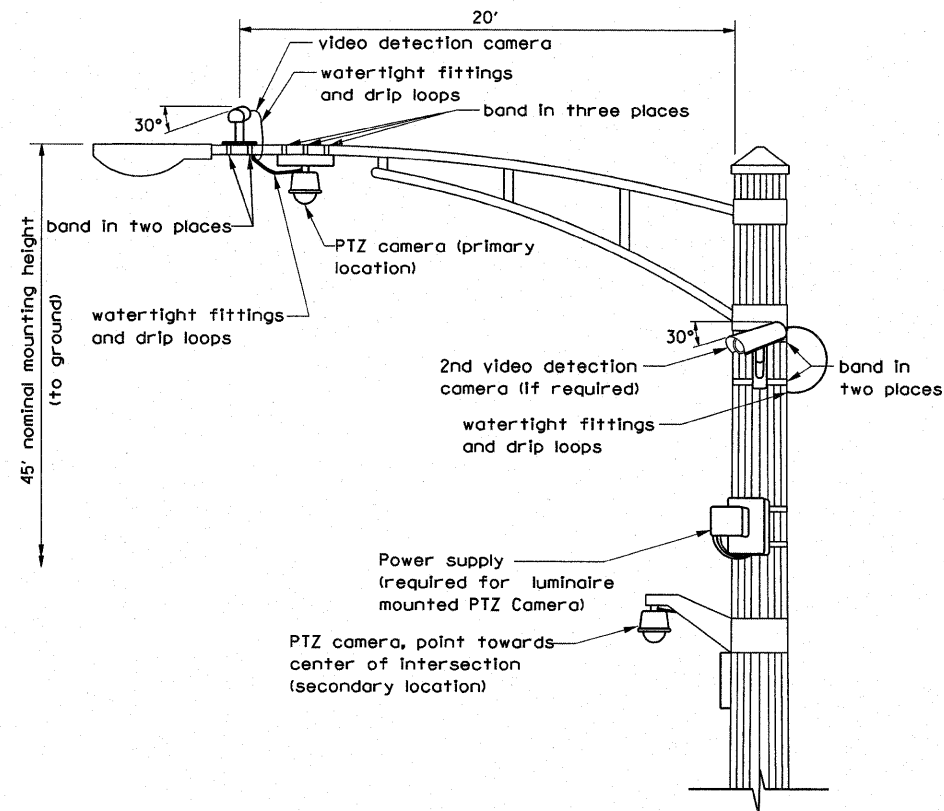
**COMBINATION MAST ARM ASSEMBLY AND POLE DIMENSIONS**  
 (NOT TO SCALE)



**IMAGE SENSOR MOUNTING DETAILS**  
 (NO SCALE)



**CAMERA MOUNTING ASSEMBLY DETAIL**  
 (NOT TO SCALE)



**VIDEO DETECTION CAMERA(S) AND DOME (PTZ) CAMERA MOUNTING DETAIL**  
 (NOT TO SCALE)

- NOTES FOR SINGLE, DUAL AND MULTIPLE MVP MOUNTING:
- MOUNT LUMINAIRE MOUNTING BRACKET AS HIGH AS POSSIBLE.
  - AIM BRACKET TOWARD DIRECTION OF TRAFFIC TO BE DETECTED.
  - MOUNT MACHINE VISION PROCESSOR AIMING DOWN AT 30 DEGREE ANGLE.

REVISIONS	DATE		APPROVED BY: A. KHAWAJA
Mounting Details Revised	5/1/08		DATE: APRIL 1, 2007
2nd Camera Locat. added	1/14/09		
<b>VIDEO DETECTION DETAILS</b>			

REVISIONS / REMARKS NO. DESCRIPTION DATE BY SURVEYOR / DSGNR/LIAISON PLOTTED BY: #USRN# #DATE#								ROUTE	SECTION	SECTION NUMBER	SHEET	SHEETS
FILE NAME: #FILE# #FILE#						VIDEO DETECTION DETAILS CH61						
USER NAME = #USER# DESIGNED - DRAWN - CHECKED - DATE -				REVISED - REVISED - REVISED - REVISED -				STATE OF ILLINOIS DEPARTMENT OF TRANSPORTATION		BONNER ROAD @ US ROUTE 12 / IL ROUTE 59 VIDEO DETECTION DETAILS SCALE: N.T.S. SHEET NO. OF SHEETS STA. TO STA.		
PLOT SCALE = #SCALE# PLOT DATE = #DATE#				F.A.P. RTE. 334 SECTION OR-N COUNTY LAKE TOTAL SHEETS 40 SHEET NO. 27 CONTRACT NO. 60L20 (ILLINDIS) FED. AID PROJECT								

006801