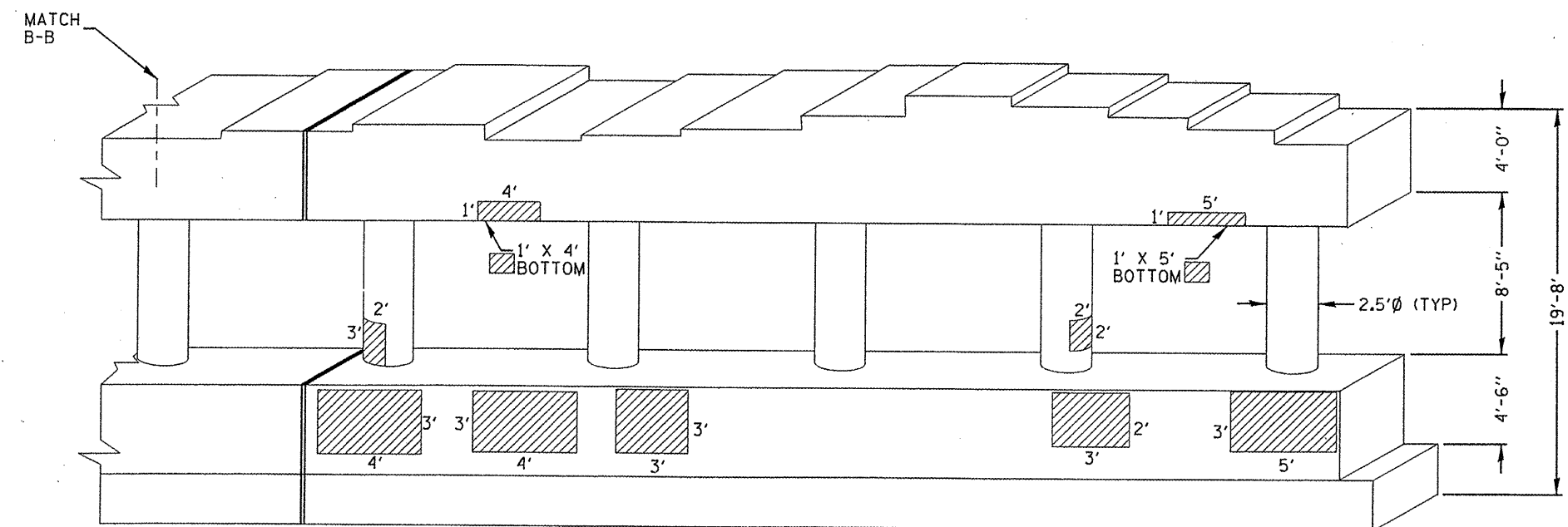


ELEVATION VIEW
LOOKING NORTH
IL 83 SB



ELEVATION VIEW
LOOKING NORTH
IL 83 NB

REACTIONS

	Span 1	Span 2
DL (kips)	21	46
LL (kips)	30.1	34.4
I (kips)	9	8.9
Total (kips)	60.1	89.3

STRUCTURAL REPAIR OF CONCRETE ≤ 5"

PIER 1 BILL OF MATERIAL	UNIT	TOTAL QTY	N FACE	S FACE
STRUCTURAL REPAIR OF CONCRETE ≤ 5"	SOFT	414	288	126
TEMPORARY SHORING AND CRIBBING	EACH	1	0	1