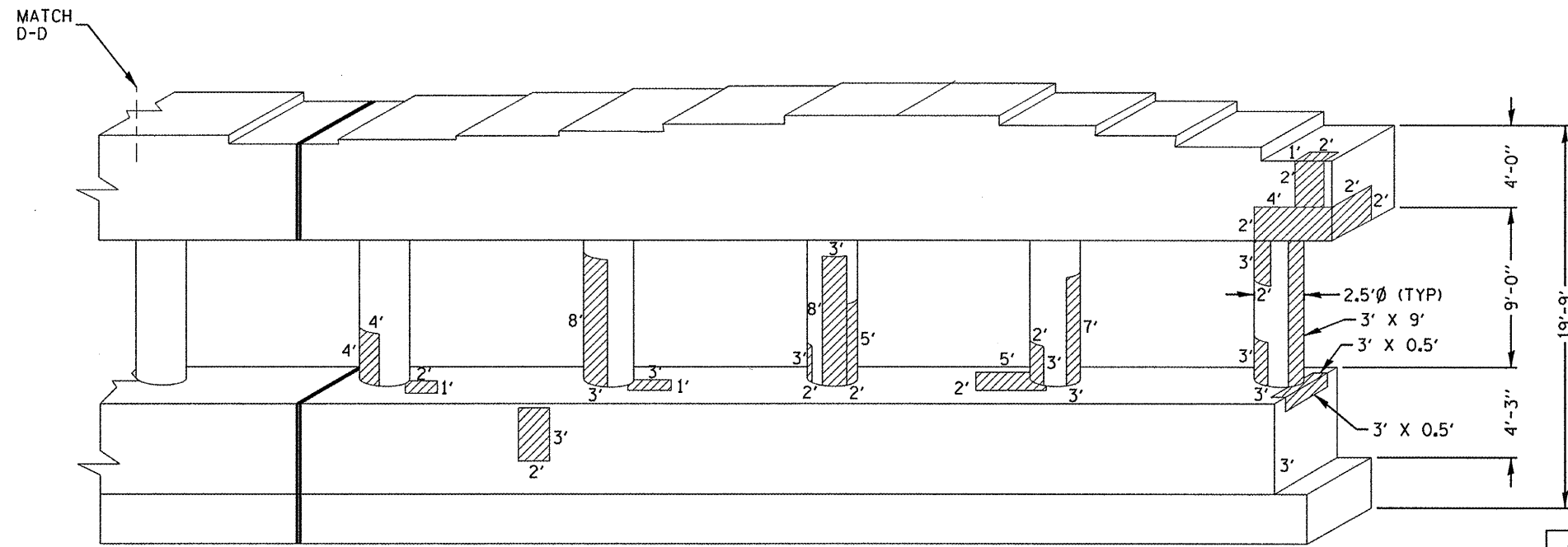


ELEVATION VIEW
LOOKING NORTH
IL 83 SB



ELEVATION VIEW
LOOKING NORTH
IL 83 NB

STRUCTURAL REPAIR OF CONCRETE ≤ 5"

PIER 2 BILL OF MATERIAL	UNIT	TOTAL QTY	N FACE	S FACE
STRUCTURAL REPAIR OF CONCRETE ≤ 5"	SOFT	658	279	379
TEMPORARY SHORING AND CRIBBING	EACH	30	30	0
FIBER WRAP	SOFT	418	418	0
ACRYLIC COATING	SOYD	46	46	0

FILE NAME =	USER NAME = nothenbc	DESIGNED - TO	REVISED -
c:\pwwork\pwwork\pwwork\pwwork\d0258101\17610-sht-plan.dgn		DRAWN - TO	REVISED -
		CHECKED - BN	REVISED -
		DATE - 05-09-2011	REVISED -

STATE OF ILLINOIS
DEPARTMENT OF TRANSPORTATION

SOUTH FACE OF PIER NO. 2 STRUCTURE REPAIR

SCALE: SHEET NO. 2 OF 2 SHEETS STA. TO STA.

F.A.P. RTE.	SECTION	COUNTY	TOTAL SHEETS	SHEET NO.
344	543 R-HB-BR	DUPAGE	19	10
CONTRACT NO. 60L52				
ILLINOIS FED. AID PROJECT				