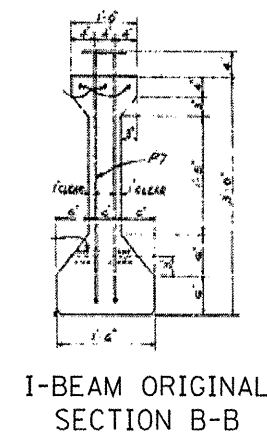
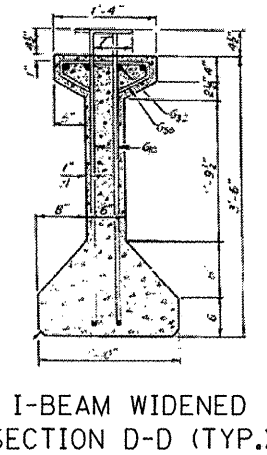


I-BEAM REPAIR



EXISTING I-BEAM SECTION E-E

AREA OF BEAM REPAIR WITH POLYMER MODIFIED PORTLAND CEMENT MORTAR

BEAM REPAIR BILL OF MATERIAL		UNIT	QUANTITY
POLYMER MODIFIED PORTLAND CEMENT MORTAR		SOFT	267

FILE NAME =	USER NAME = nathanbc	DESIGNED - TO	REVISED -
c:\pwork\pwork\pwork\nathanbc\d0258101\DI76510-sht-plan.dgn	610-sht-plan.dgn	DRAWN - TO	REVISED -
	PLOT SCALE = 100.0000' / IN.	CHECKED - BN	REVISED -
	PLOT DATE = 5/12/2011	DATE	

STATE OF ILLINOIS
DEPARTMENT OF TRANSPORTATION

PCC I-BEAM REPAIR LOCATIONS			
SCALE:	SHEET NO.	OF SHEETS	STA. TO STA.

F.A.P. RTE.	SECTION	COUNTY	TOTAL SHEETS	SHEET NO.
344	543 R-HB-BR	DUPAGE	19	16
CONTRACT NO. 60L52				
ILLINOIS FED. AID PROJECT				