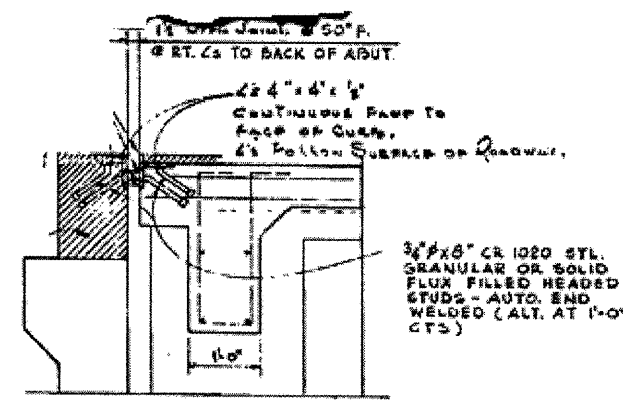


SECTION D-D THRU DECK WIDENING AT ABUTMENTS

DIAPHRAGM REPAIR



SECTION E-E THRU ORIGINAL DECK ABUTMENTS

AREA OF DIAPHRAGM REPAIR WITH STRUCTURAL REPAIR OF CONCRETE ≤ 5"

DIAPHRAGM REPAIR BILL OF MATERIAL	UNIT	QUANTITY
STRUCTURAL REPAIR OF CONCRETE ≤ 5"	SOFT	184

FILE NAME =	USER NAME = nathanbc	DESIGNED - TO	REVISED -
c:\pwork\pwork\dot\nathanbc\d0258101\0170518-sht-plan.dgn		DRAWN - TO	REVISED -
	PLOT SCALE = 100.0000' / IN.	CHECKED - BN	REVISED -
	PLOT DATE = 5/12/2011	DATE - 05-09-2011	REVISED -

STATE OF ILLINOIS  
DEPARTMENT OF TRANSPORTATION

DIAPHRAGM REPAIR LOCATIONS				
SCALE:	SHEET NO.	OF SHEETS	STA.	TO STA.

F.A.P. RTE.	SECTION	COUNTY	TOTAL SHEETS	SHEET NO.
344	543 R-HB-BR	DUPAGE	19	17
CONTRACT NO. 60L52				
ILLINOIS FED. AID PROJECT				