

STATE OF ILLINOIS
 DEPARTMENT OF TRANSPORTATION
 DIVISION OF HIGHWAYS

**PROPOSED
 HIGHWAY PLANS**

FAP ROUTE 344: IL 83 (KINGERY HIGHWAY)
 OVER IL 38 (ROOSEVELT RD.)

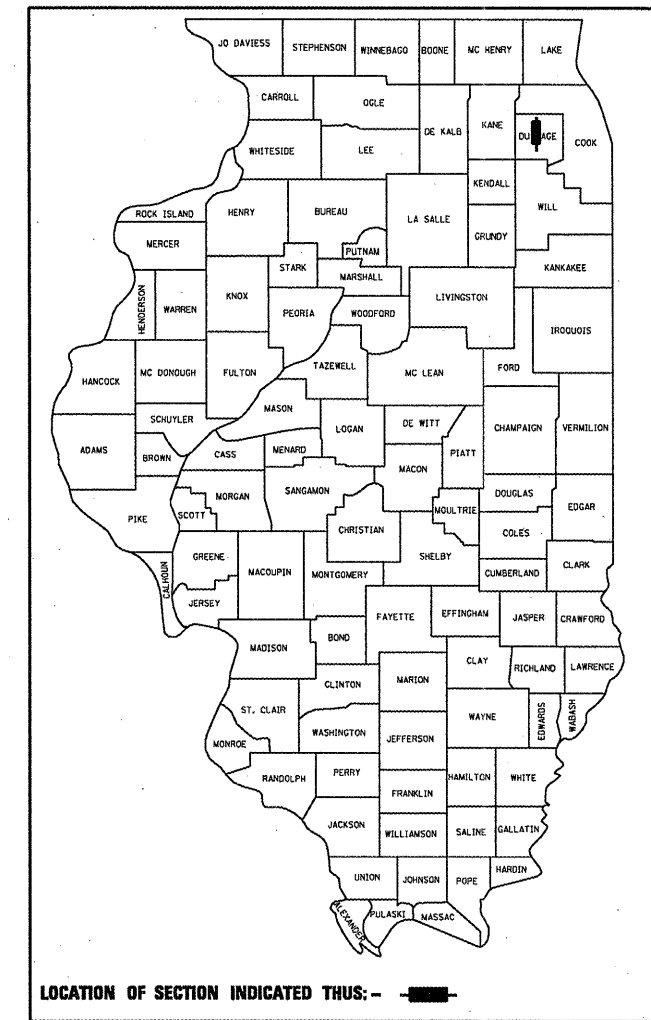
SECTION 543 R-HB-BR

BRIDGE REPAIRS
 COUNTY: DUPAGE
 C-91-706-10

F.A.P. RTE.	SECTION	COUNTY	TOTAL SHEETS	SHEET NO.
344	543 R-HB-BR	DUPAGE	19	1
		ILLINOIS	CONTRACT NO. 60L52	

19+3 = 22

D-91-706-10



FOR INDEX OF SHEETS, SEE SHEET NO 2

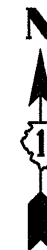
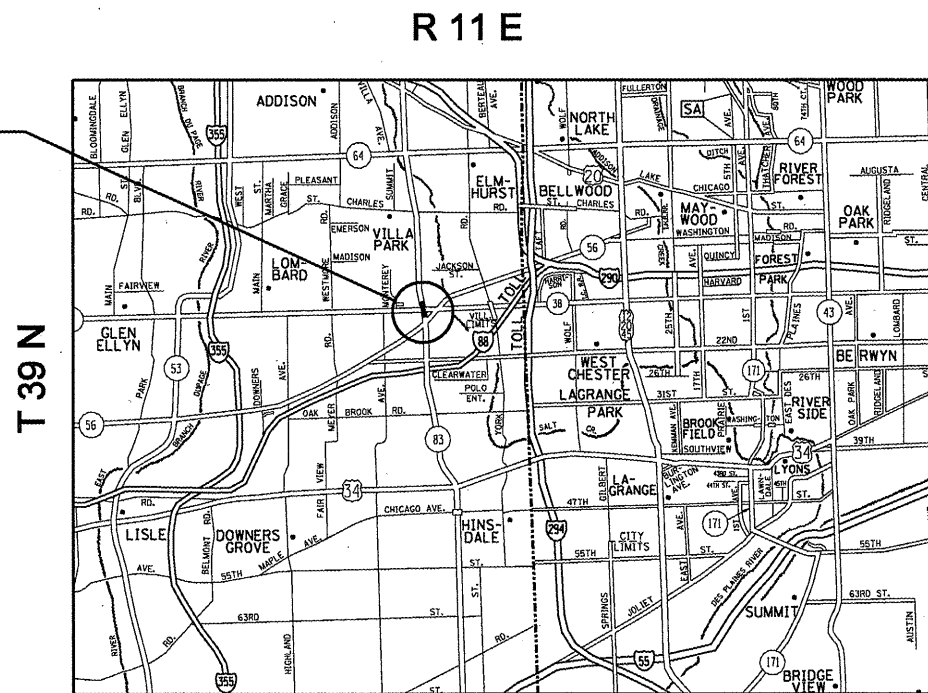
IMPROVEMENT IS LOCATED IN THE
 CITY OF OAKBROOK TERRACE

TRAFFIC DATA

IL 83 (KINGERY HWY.)
 2009 ADT = 72,200
 SPEED LIMIT = 50 MPH

IL 38 (ROOSEVELT RD.)
 2009 ADT = 49,700
 SPEED LIMIT = 55 MPH

IMPROVEMENT
 LOCATION:
 SN 022-0115



YORK TOWNSHIP

J.U.L.I.E.
 JOINT UTILITY LOCATION INFORMATION FOR EXCAVATION
 1-800-892-0123
 OR 811

PROJECT ENGINEER: ROBERT BORO (847) 705-4178
 PROJECT MANAGER: ISSAM RAYYAN

CONTRACT NO. 60L52

STATE OF ILLINOIS
 DEPARTMENT OF TRANSPORTATION
 DIVISION OF HIGHWAYS

SUBMITTED APRIL 8, 20 11
Diane M. O'Keefe
 DEPUTY DIRECTOR OF HIGHWAYS, REGION ENGINEER

May 13 20 11
Scott E. Stett P.E.
 acting ENGINEER OF DESIGN AND ENVIRONMENT

May 13 20 11
Christine M. Reed
 DIRECTOR OF HIGHWAYS, CHIEF ENGINEER

**PRINTED BY THE AUTHORITY
 OF THE STATE OF ILLINOIS**

INDEX OF SHEETS

- 1 TITLE SHEET
- 2 INDEX OF SHEETS, STATE STANDARDS & GENERAL NOTES
- 3 SUMMARY OF QUANTITIES
- 4-17 STRUCTURAL REPAIRS - SN 022-0115
- 18 ARTERIAL ROAD INFORMATION SIGN (TC-22)
- 19 PARTIAL RAMP & SHOULDER CLOSURE DETAIL (TC-17)

19A.-19C. TRAFFIC CONTROL DETAILS

STATE STANDARDS

- 701400-05 APPROACH TO LANE CLOSURE, FREEWAY / EXPRESSWAY
- 701401-06 LANE CLOSURE, FREEWAY / EXPRESSWAY
- 701411-07 LANE CLOSURE, MULTILANE, AT ENTRANCE OR EXIT RAMP, FOR SPEEDS > OR EQ. TO 45 MPH
- 701421-03 LANE CLOSURE, MULTILANE, DAY OPERATIONS ONLY, FOR SPEEDS > OR EQ. TO 45 MPH TO 55 MPH
- ~~701446-02 TWO LANE CLOSURE FREEWAY / EXPRESSWAY~~
- 701901-01 TRAFFIC CONTROL DEVICES

GENERAL NOTES

BEFORE STARTING ANY EXCAVATION, THE CONTRACTOR SHALL CALL "J.U.L.I.E." AT (800) 892-0123 OR 811 FOR FIELD LOCATIONS OF BURIED ELECTRIC, TELEPHONE AND GAS UTILITIES. 48 HOUR NOTIFICATION IS REQUIRED.

THE CONTRACTOR WILL NOT BE ALLOWED TO SET UP A YARD OR FIELD OFFICE ON STATE PROPERTY WITHOUT WRITTEN PERMISSION FROM THE DEPARTMENT

THESE PLANS HAVE BEEN PREPARED FROM NOTES RECEIVED FROM BRIDGE INSPECTORS.

THE CONTRACTOR SHALL COORDINATE CONSTRUCTION ACTIVITIES WITH UTILITY COMPANIES AND THE CITY OF OAKBROOK TERRACE.

DO NOT SCALE PLANS FOR CONSTRUCTION DIMENSIONS.

THE CONTRACTOR SHALL CONTACT THE DISTRICT ONE TRAFFIC CONTROL SUPERVISOR AT (847)705-4470 A MINIMUM OF 72 HOURS IN ADVANCE OF BEGINNING WORK.

THE CONTRACTOR SHALL BE REQUIRED TO PROVIDE ACCESS TO ABUTTING PROPERTY AT ALL TIMES DURING THE CONSTRUCTION OF THIS PROJECT.

PLAN DIMENSIONS AND DETAILS RELATIVE TO EXISTING PLANS ARE SUBJECT TO ROUTINE VARIATIONS THE CONTRACTOR SHALL FIELD VERIFY EXISTING DIMENSIONS AND DETAILS AFFECTING NEW CONSTRUCTION AND MAKE NECESSARY APPROVED ADJUSTMENTS PRIOR TO CONSTRUCTION OR ORDERING OF MATERIALS. SUCH VARIATIONS SHALL NOT BE CAUSE FOR ADDITIONAL COMPENSATION FOR A CHANGE IN SCOPE OF THE WORK, HOWEVER, THE CONTRACTOR WILL BE PAID FOR THE QUANTITY ACTUALLY FURNISHED BASED UPON THE UNIT PRICE BID FOR THE WORK.

Rev.

FILE NAME =	USER NAME = nathanbc	DESIGNED -	REVISED -	STATE OF ILLINOIS DEPARTMENT OF TRANSPORTATION	INDEX OF SHEETS, STATE STANDARDS AND GENERAL NOTES	F.A.P. RTE.	SECTION	COUNTY	TOTAL SHEETS	SHEET NO.
c:\p\work\p\dot\nathanbc\d0258101\0176610-sht-plan.dgn	DRAWN -	REVISED -	344			543 R-HB-BR	DUPAGE	19	2	
PLOT SCALE = 100.0000' / IN.	CHECKED -	REVISED -	CONTRACT NO. 60LS2							
PLOT DATE = 4/8/2011	DATE -	REVISED -	ILLINOIS FED. AID PROJECT							
					SCALE:	SHEET NO. OF SHEETS		STA. TO STA.		

ROUTE	SECTION	COUNTY	TOTAL SHEETS	SHEET NUMBER
FAP 344	543 R-HB-BR	DUPAGE	19	3

CONTRACT NO. 60L52

SUMMARY OF QUANTITIES

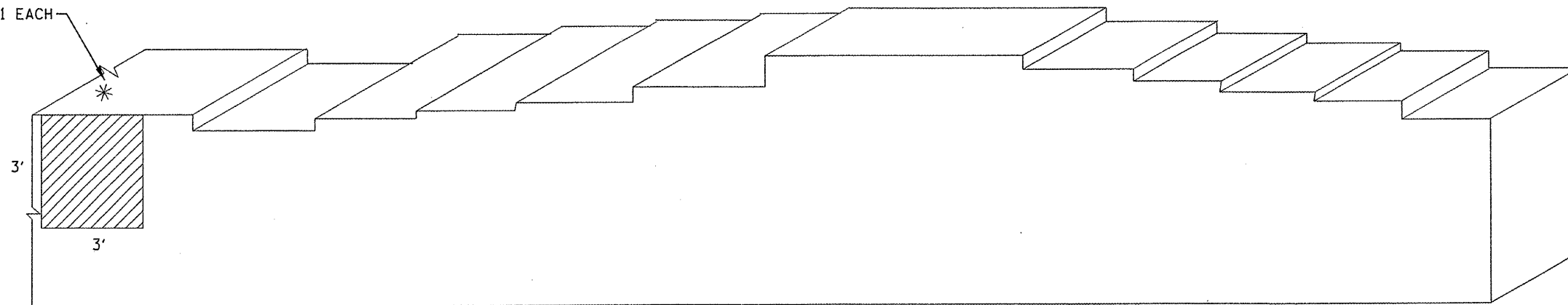
CODE NO	DESCRIPTION	UNITS	URBAN 100% STATE TOTAL QUANTITY	CONSTRUCTION TYPE CODE: 0014			
				SN 022-1115			
67100100	MOBILIZATION	L SUM	1	1			
70100310	TRAFFIC CONTROL AND PROTECTION, STANDARD 701421	L SUM	1	1			
70100420	TRAFFIC CONTROL AND PROTECTION, STANDARD 701411	EACH	1	1			
70100800	TRAFFIC CONTROL AND PROTECTION, STANDARD 701401	L SUM	1	1			
70100815	TRAFFIC CONTROL AND PROTECTION, STANDARD 701446	L SUM	1	1			
X0322194	POLYMER MODIFIED PORTLAND CEMENT MORTAR	SQ FT	267	267			
X0325748	ACRYLIC COATING	SQ YD	46	46			
X0325749	FIBER WRAP	SQ FT	418	418			
Z0012754	STRUCTURAL REPAIR OF CONCRETE (DEPTH EQUAL TO OR LESS THAN 5 INCHES)	SQ FT	1855	1855			
Z0012755	STRUCTURAL REPAIR OF CONCRETE (DEPTH GREATER THAN 5 INCHES)	SQ FT	34	34			
Z0021907	SILICONE JOINT SEALER, 1.75"	FOOT	555	555			
Z0021914	SILICONE JOINT SEALER, 2.75"	FOOT	140	140			
Z0030850	TEMPORARY INFORMATION SIGNING	SQ FT	51.4	51.4			
Z0073200	TEMPORARY SHORING AND CRIBBING	EACH	35	35			

ILLINOIS DEPARTMENT OF
TRANSPORTATION

SUMMARY OF QUANTITIES

Rev.

TEMPORARY SHORING 1 EACH



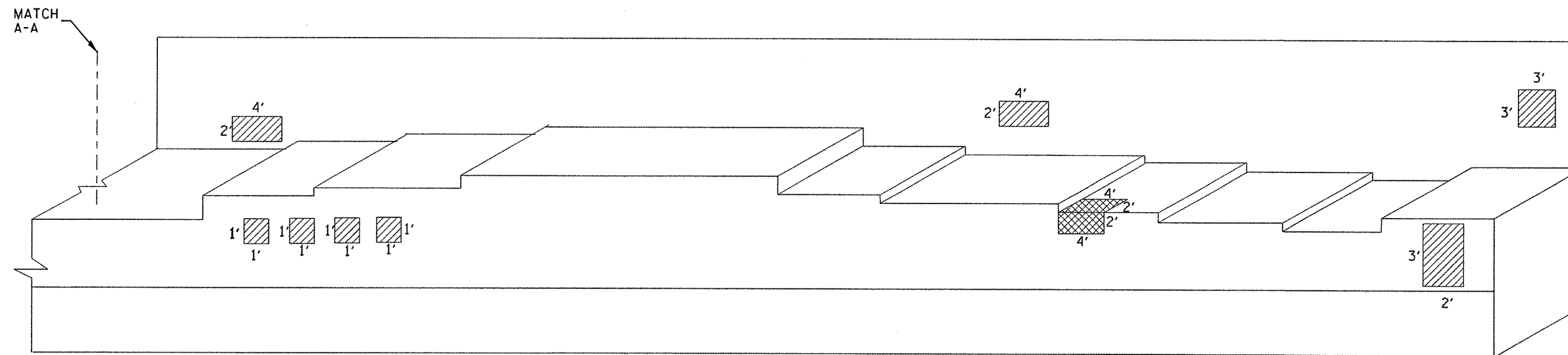
ELEVATION VIEW
IL 83 NB
LOOKING NORTH

REACTIONS

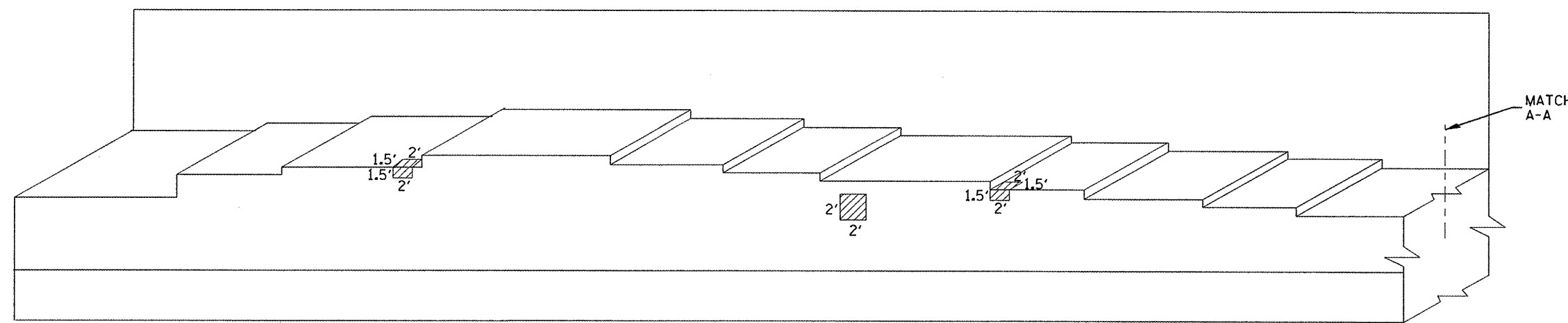
DL (kips)	21
LL (kips)	30.1
I (kips)	9
Total (kips)	60.1

 STRUCTURAL REPAIR OF CONCRETE \leq 5"

NORTH ABUTMENT BILL OF MATERIAL	UNIT	QUANTITY
STRUCTURAL REPAIR OF CONCRETE \leq 5"	SOFT	9
TEMPORARY SHORING AND CRIBBING	EACH	1



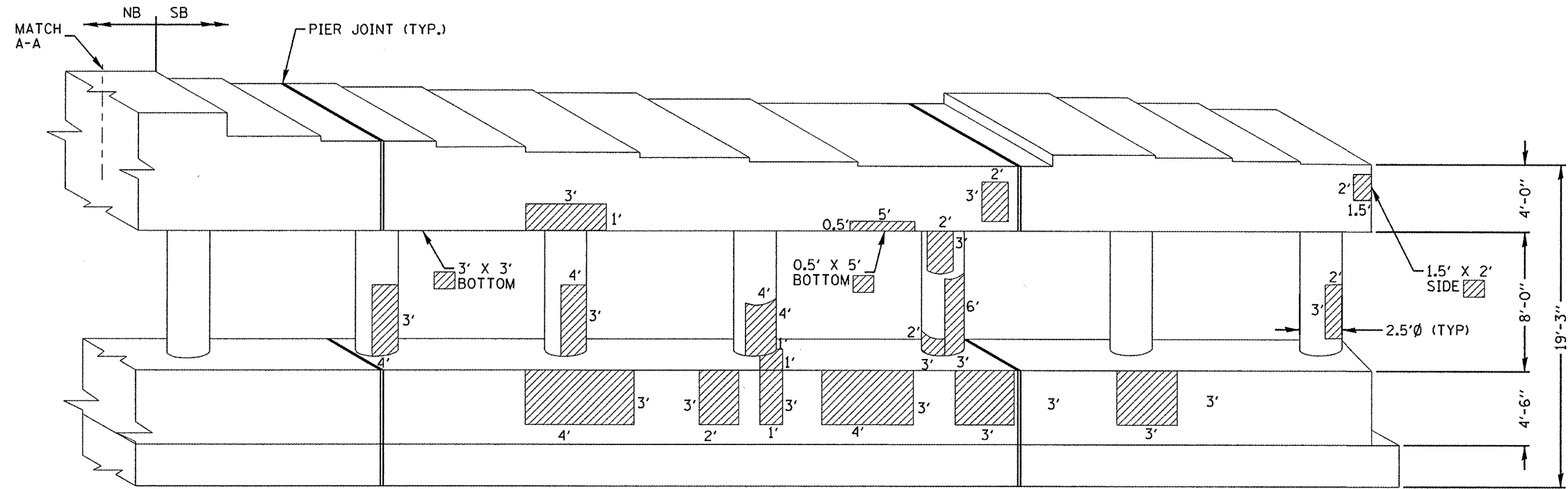
ELEVATION VIEW
IL 83 SB
LOOKING SOUTH



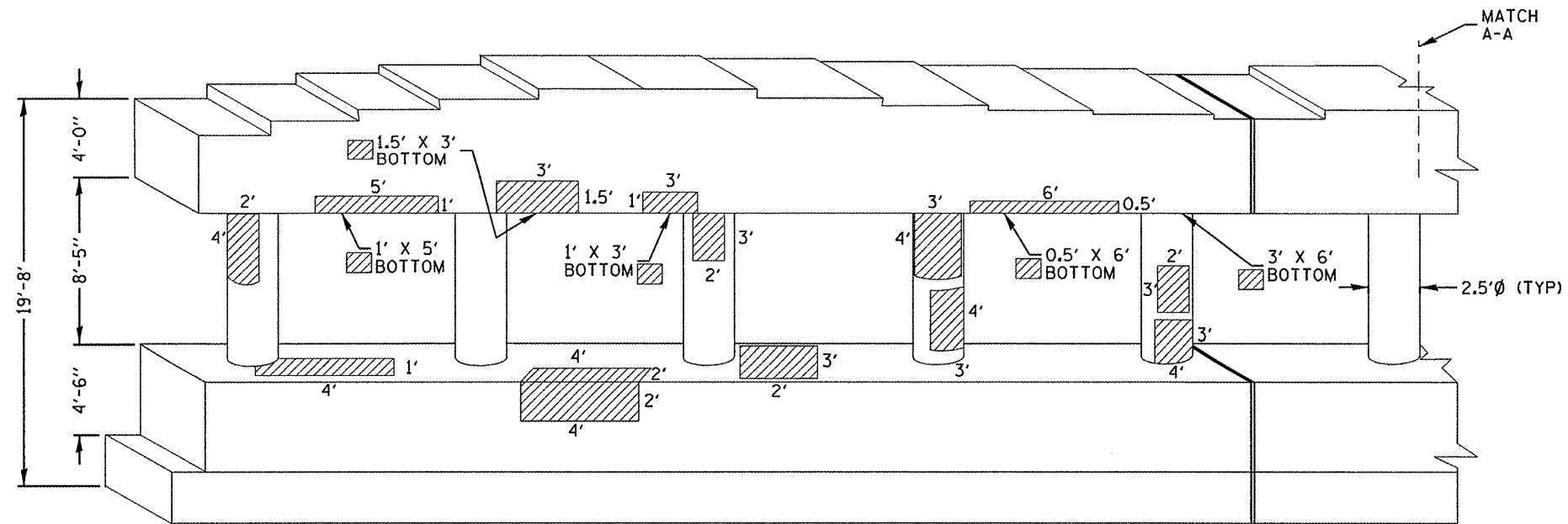
ELEVATION VIEW
IL 83 NB
LOOKING SOUTH

- STRUCTURAL REPAIR OF CONCRETE > 5"
- STRUCTURAL REPAIR OF CONCRETE ≤ 5"

SOUTH ABUTMENT BILL OF MATERIAL		UNIT	QUANTITY
STRUCTURAL REPAIR OF CONCRETE ≤ 5"		SOFT	51
STRUCTURAL REPAIR OF CONCRETE > 5"		SOFT	16



ELEVATION VIEW
LOOKING SOUTH
IL 83 SB



ELEVATION VIEW
LOOKING SOUTH
IL 83 NB

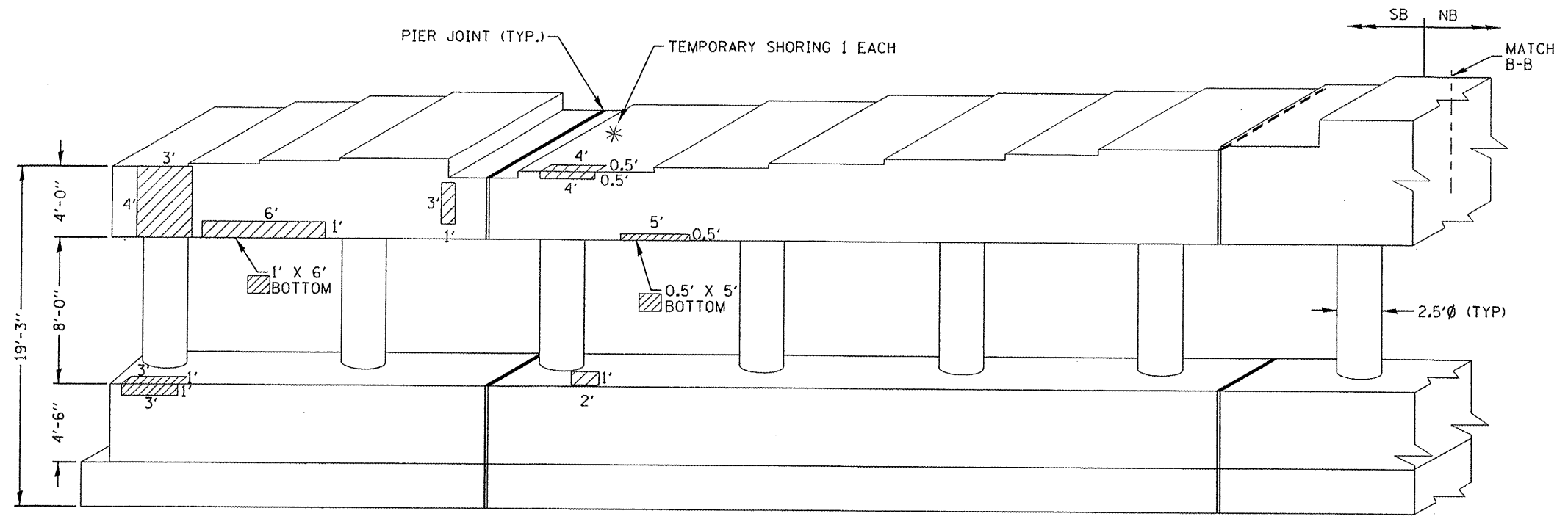
STRUCTURAL REPAIR OF CONCRETE $\leq 5''$

FILE NAME =	USER NAME = nothanbc	DESIGNED - TO	REVISED -
c:\pwork\p1dot\nethanbc\d8256101\DI76510-shr-p1en.dgn		DRAWN - TO	REVISED -
		CHECKED - BN	REVISED -
		DATE - 05-09-2011	REVISED -

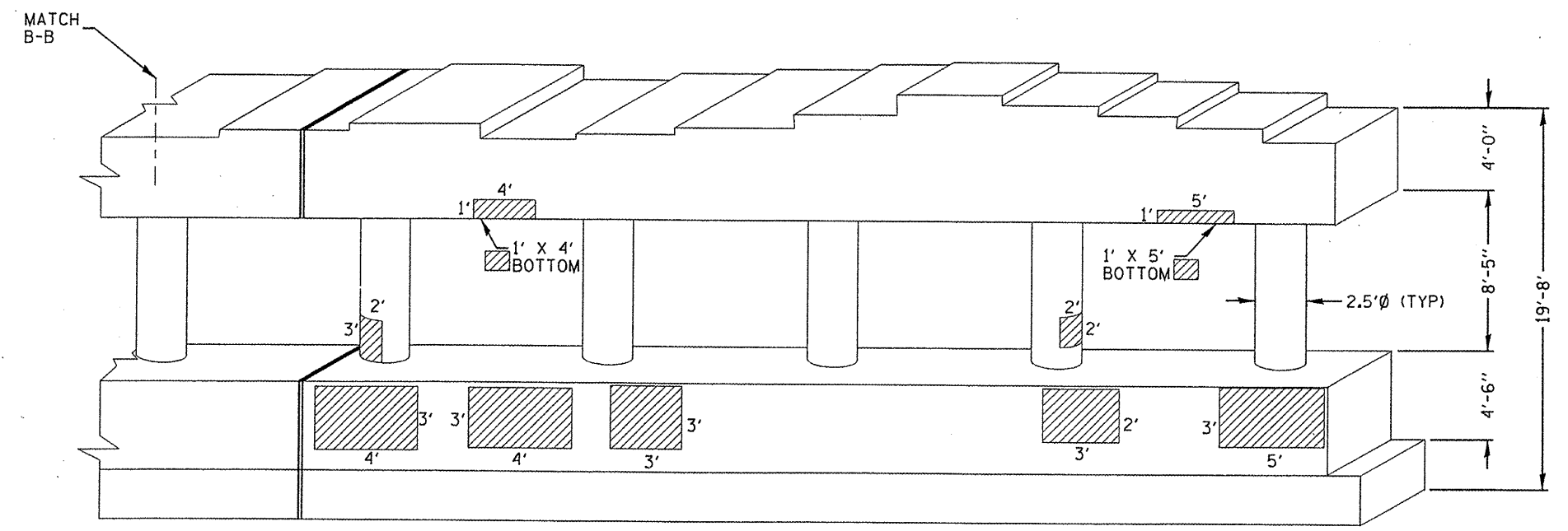
**STATE OF ILLINOIS
DEPARTMENT OF TRANSPORTATION**

NORTH FACE OF PIER NO. 1 STRUCTURE REPAIR	
SCALE:	SHEET NO. 1 OF 2 SHEETS
STA.	TO STA.

F.A.P. RTE.	SECTION	COUNTY	TOTAL SHEETS	SHEET NO.
344	543 R-HB-BR	DUPAGE	19	7
CONTRACT NO. 60L52				
ILLINOIS FED. AID PROJECT				



ELEVATION VIEW
LOOKING NORTH
IL 83 SB



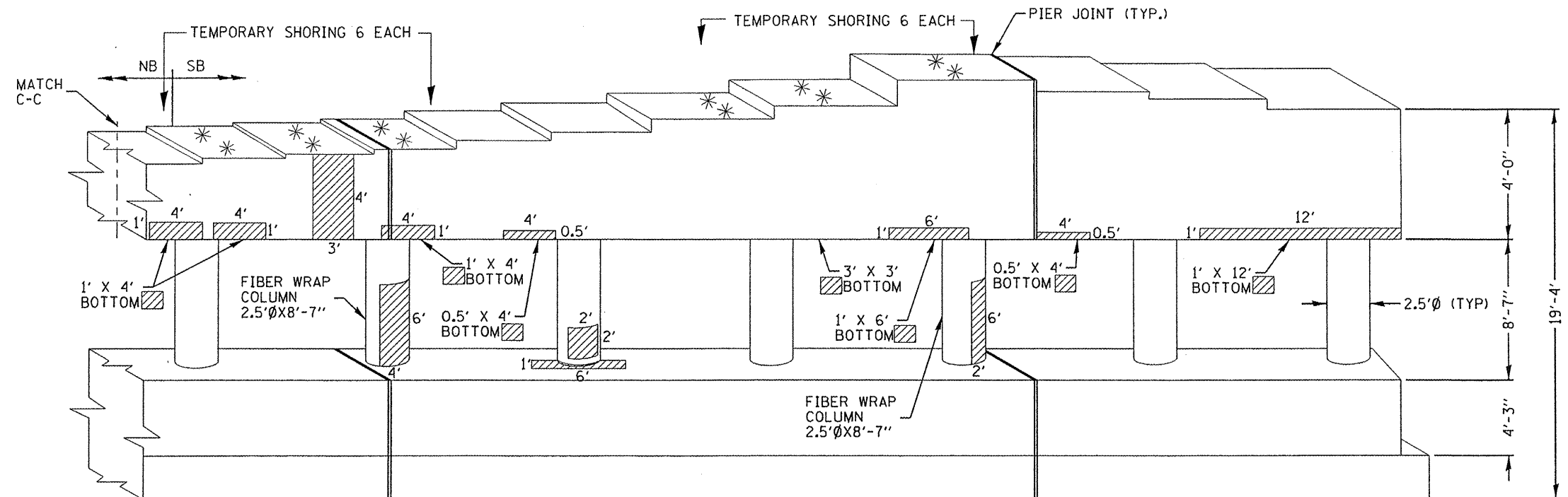
ELEVATION VIEW
LOOKING NORTH
IL 83 NB

REACTIONS

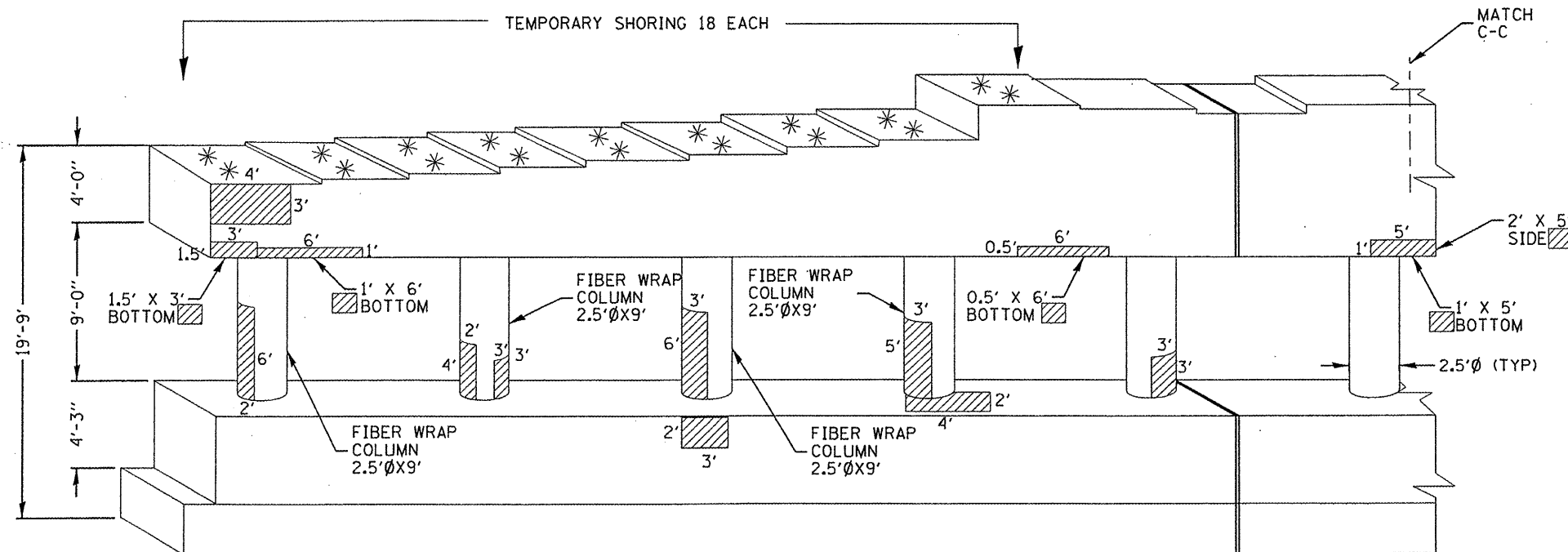
	Span 1	Span 2
DL (kips)	21	46
LL (kips)	30.1	34.4
I (kips)	9	8.9
Total (kips)	60.1	89.3

STRUCTURAL REPAIR OF CONCRETE ≤ 5"

PIER 1 BILL OF MATERIAL	UNIT	TOTAL QTY	N FACE	S FACE
STRUCTURAL REPAIR OF CONCRETE ≤ 5"	SOFT	414	288	126
TEMPORARY SHORING AND CRIBBING	EACH	1	0	1



ELEVATION VIEW
LOOKING SOUTH
IL 83 SB

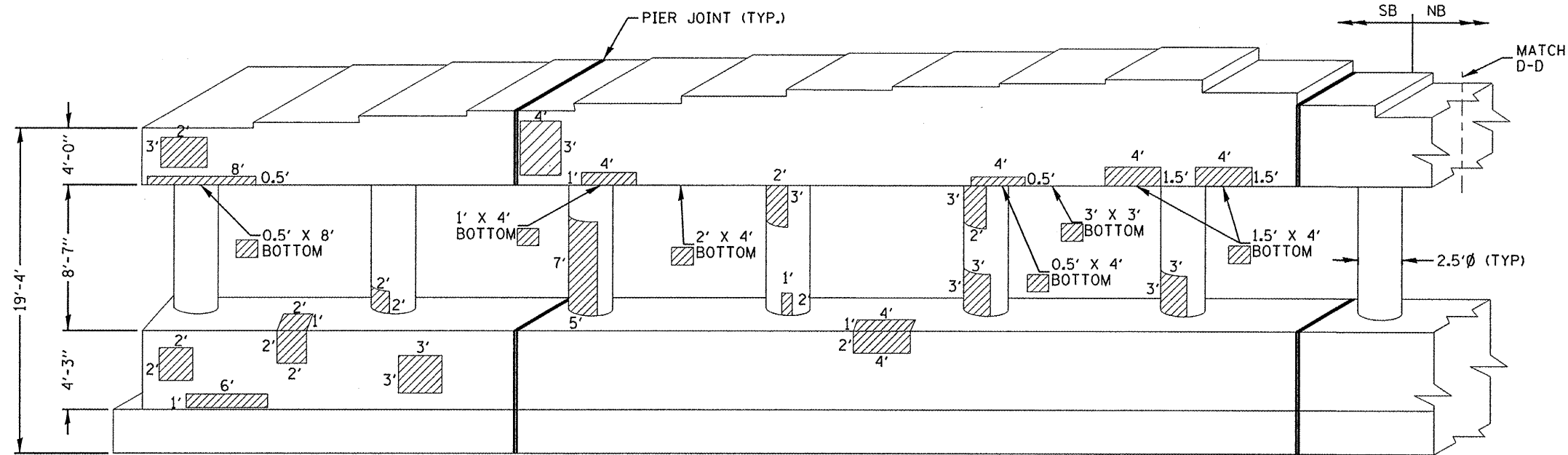


ELEVATION VIEW
LOOKING SOUTH
IL 83 NB

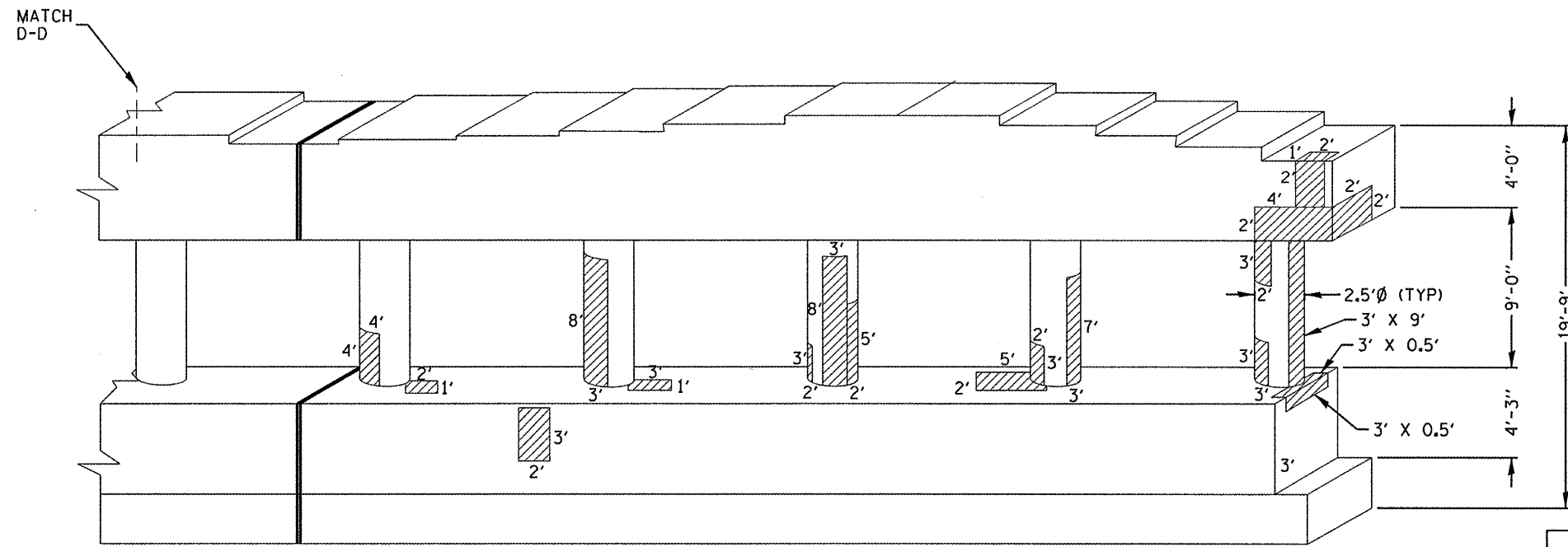
REACTIONS

	Span 2	Span 3
DL (kips)	46	39
LL (kips)	33.2	33.2
I (kips)	9	9
Total (kips)	88.2	81.2

STRUCTURAL REPAIR OF CONCRETE ≤ 5"



ELEVATION VIEW
LOOKING NORTH
IL 83 SB



ELEVATION VIEW
LOOKING NORTH
IL 83 NB

PIER 2 BILL OF MATERIAL		UNIT	TOTAL QTY	N FACE	S FACE
STRUCTURAL REPAIR OF CONCRETE ≤ 5"		SOFT	658	279	379
TEMPORARY SHORING AND CRIBBING		EACH	30	30	0
FIBER WRAP		SOFT	418	418	0
ACRYLIC COATING		SOYD	46	46	0

STRUCTURAL REPAIR OF CONCRETE ≤ 5"

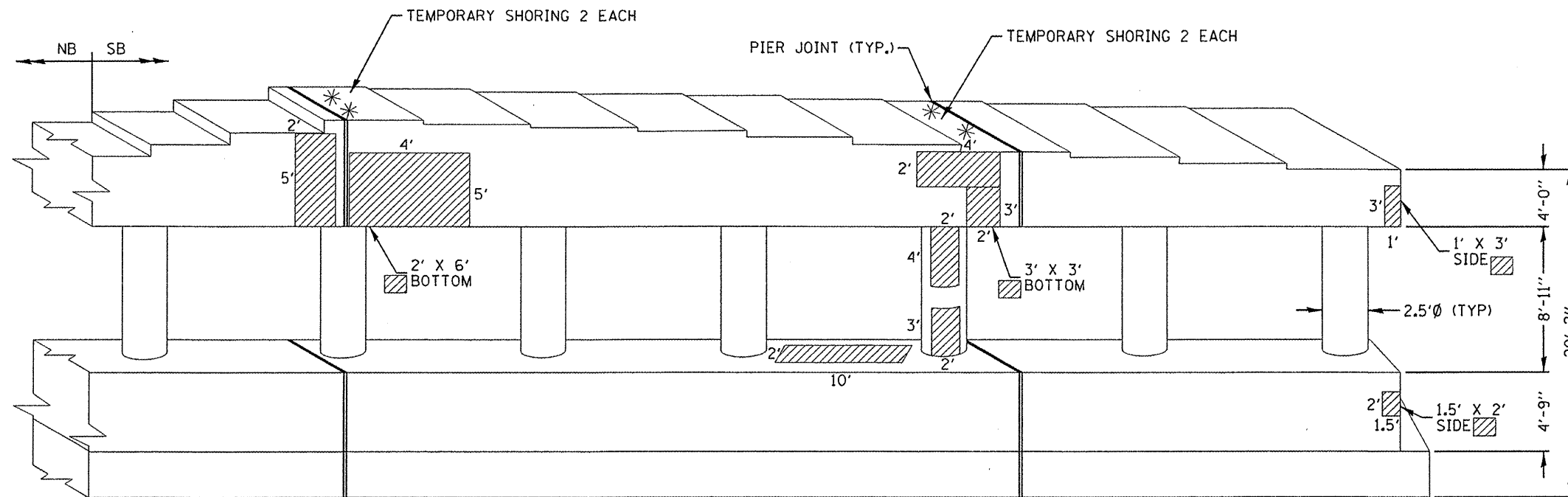
FILE NAME =	USER NAME = nothanbc	DESIGNED - TO	REVISED -
c:\pwork\p2idat\nathanbc\d0256101\DI7610-sht-plan.dgn		DRAWN - TO	REVISED -
PLOT SCALE = 100.0000 ' / IN.		CHECKED - BN	REVISED -
PLOT DATE = 5/12/2011		DATE - 05-09-2011	REVISED -

**STATE OF ILLINOIS
DEPARTMENT OF TRANSPORTATION**

SOUTH FACE OF PIER NO. 2 STRUCTURE REPAIR

SCALE: SHEET NO. 2 OF 2 SHEETS STA. TO STA.

F.A.P. RTE.	SECTION	COUNTY	TOTAL SHEETS	SHEET NO.
344	543 R-HB-BR	DUPAGE	19	10
CONTRACT NO. 60L52				
ILLINOIS FED. AID PROJECT				



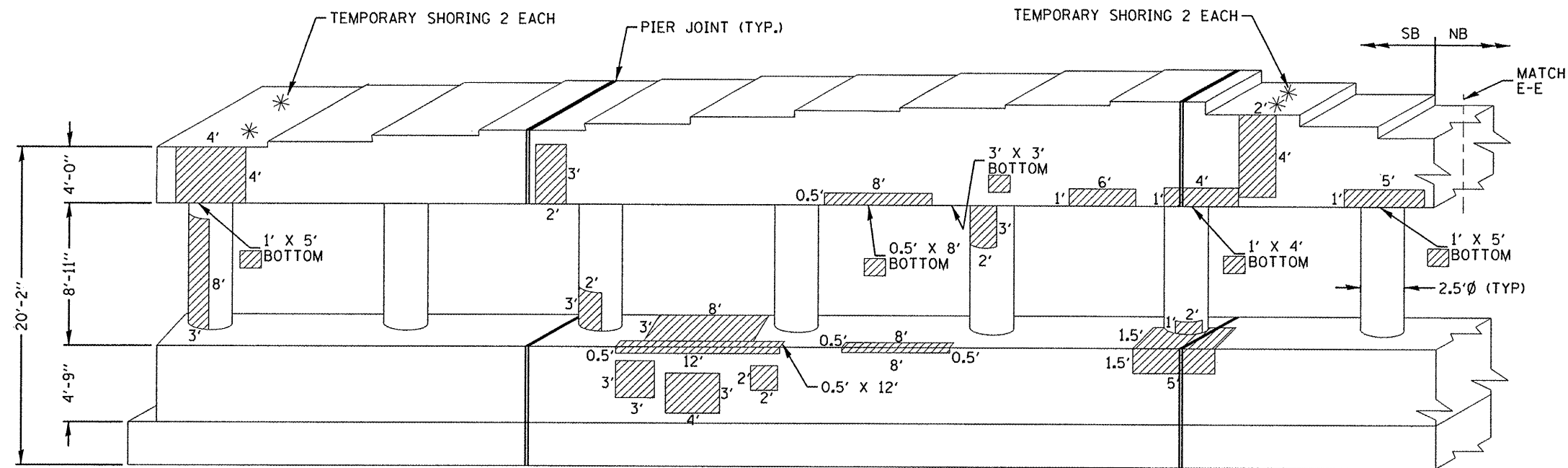
ELEVATION VIEW
LOOKING SOUTH
IL 83 SB

REACTIONS

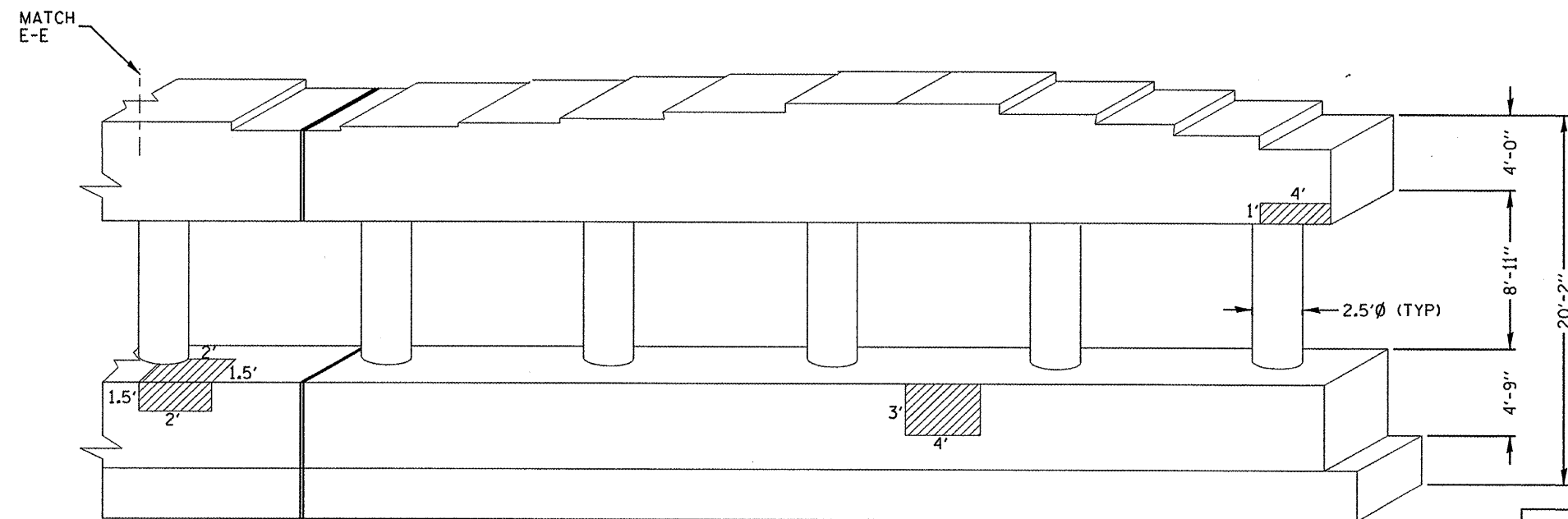
	Span 3	Span 4
DL (kips)	39	23
LL (kips)	33.2	30.6
I (kips)	9	9.2
Total (kips)	81.2	62.8

STRUCTURAL REPAIR OF CONCRETE ≤ 5"

FILE NAME = c:\pwwork\pwwork\nothenbc\025810\17610-sht-plen.dgn	USER NAME = nothenbc	DESIGNED - TO	REVISED -	STATE OF ILLINOIS DEPARTMENT OF TRANSPORTATION	NORTH FACE OF PIER NO. 3 STRUCTURE REPAIR	F.A.P. RTE. 344	SECTION 543 R-HB-BR	COUNTY	TOTAL SHEETS 19	SHEET NO. 11		
		DRAWN - TO	REVISED -			SCALE: SHEET NO. 1 OF 2 SHEETS STA. TO STA.		CONTRACT NO. 60L52				
		CHECKED - BN	REVISED -			ILLINOIS FED. AID PROJECT						
		DATE - 05-09-2011	REVISED -									



ELEVATION VIEW
LOOKING NORTH
IL 83 SB



ELEVATION VIEW
LOOKING NORTH
IL 83 NB

STRUCTURAL REPAIR OF CONCRETE $\leq 5''$

PIER 3 BILL OF MATERIAL	UNIT	TOTAL QTY	N FACE	S FACE
STRUCTURAL REPAIR OF CONCRETE $\leq 5''$	SOFT	337	111	226
TEMPORARY SHORING AND CRIBBING	EACH	4	0	4

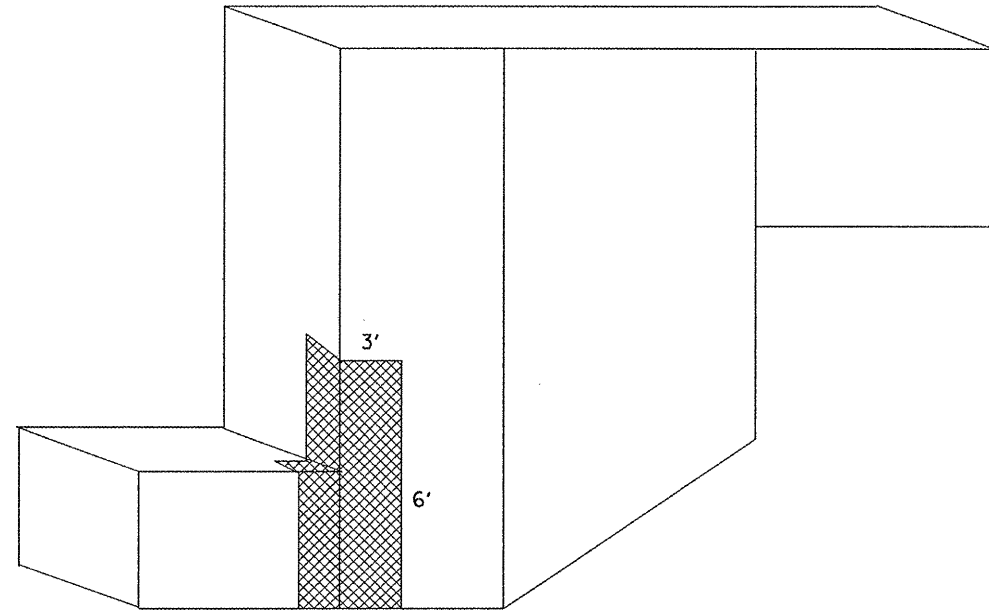
FILE NAME *	USER NAME = nathanbc	DESIGNED - TO	REVISED -
ci:\pwork\psidot\nathanbc\025810\10176510-shr-plan.dgn		DRAWN - TO	REVISED -
		CHECKED - BN	REVISED -
		DATE - 05-09-2011	REVISED -

STATE OF ILLINOIS
DEPARTMENT OF TRANSPORTATION

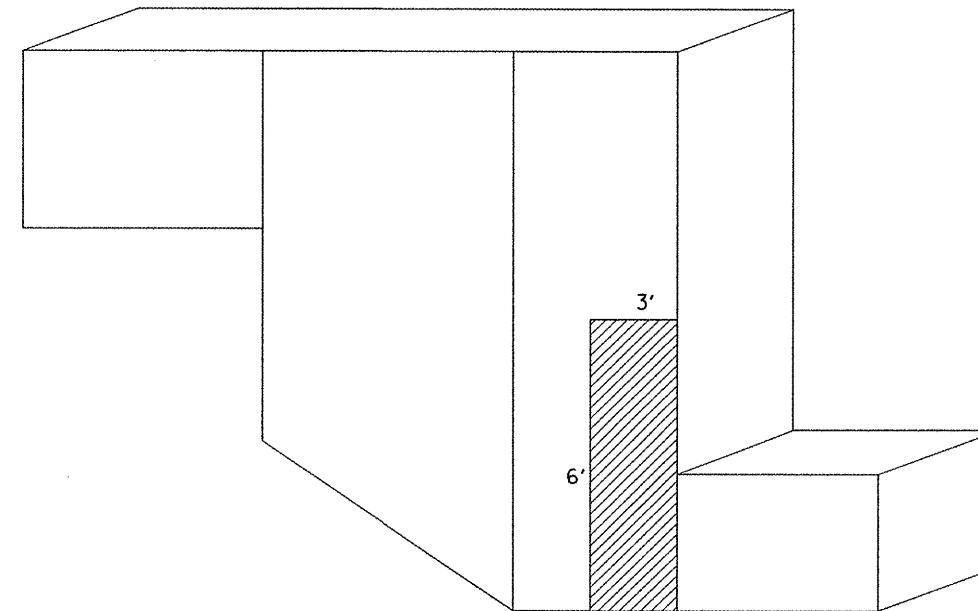
SOUTH FACE OF PIER NO. 3 STRUCTURE REPAIR

F.A.P. RTE.	SECTION	COUNTY	TOTAL SHEETS	SHEET NO.
344	543 R-HB-BR	DUPAGE	19	12
CONTRACT NO. 60L52				
ILLINOIS FED. AID PROJECT				

SCALE: SHEET NO. 2 OF 2 SHEETS STA. TO STA.



N.E. WINGWALL



S.E. WINGWALL

- STRUCTURAL REPAIR OF CONCRETE > 5"
- STRUCTURAL REPAIR OF CONCRETE ≤ 5"

PIER 2 BILL OF MATERIAL	UNIT	QUANTITY
STRUCTURAL REPAIR OF CONCRETE ≤ 5"	SOFT	18
STRUCTURAL REPAIR OF CONCRETE > 5"	SOFT	18

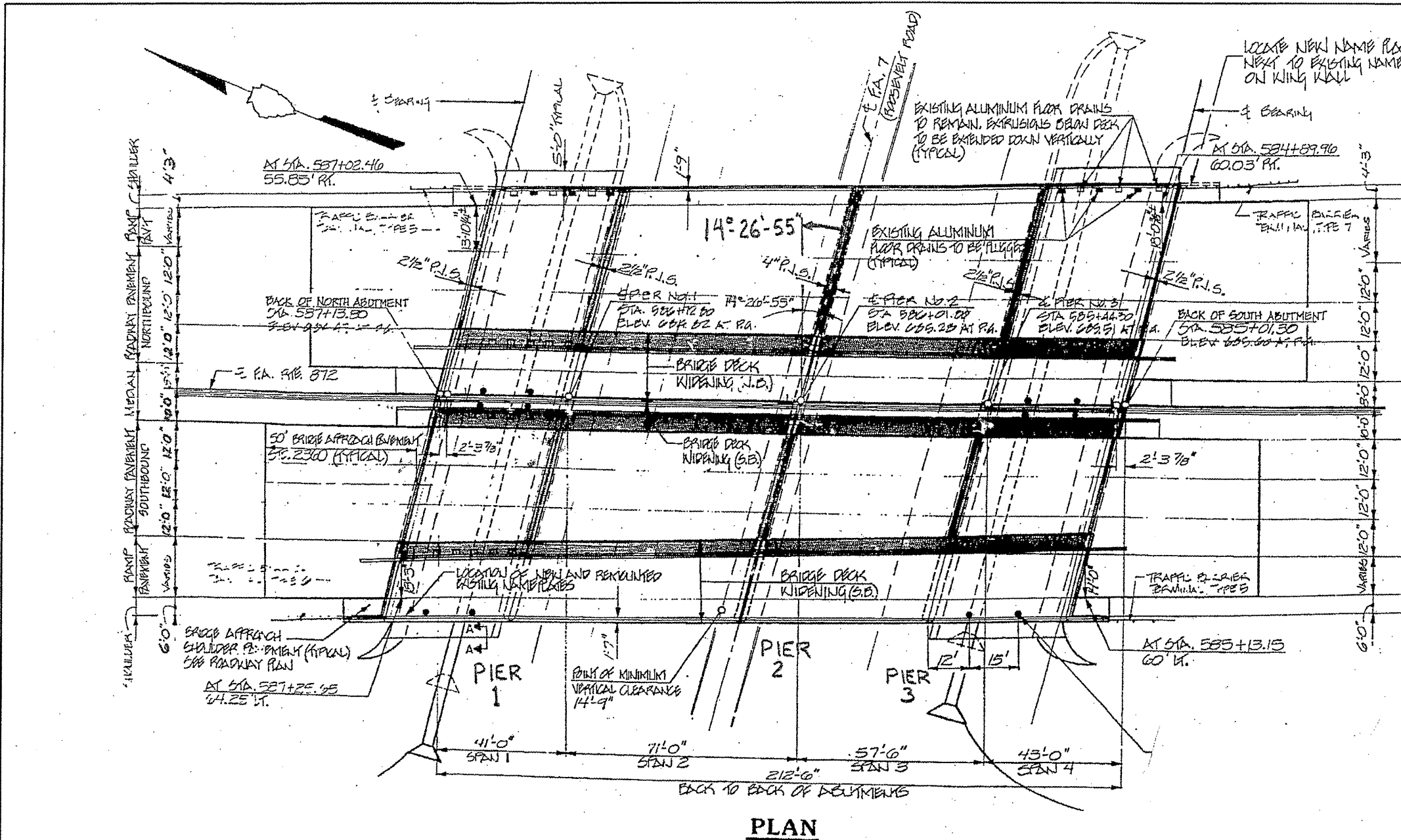
FILE NAME =	USER NAME = nothenbc	DESIGNED - TO	REVISED -
c:\pwork\pwork\pwork\nothenbc\025810\10178510-shr-plan.dgn		DRAWN - TO	REVISED -
PLOT SCALE = 100.0000' / IN.		CHECKED - BN	REVISED -
PLOT DATE = 5/12/2011		DATE - 05-09-2011	REVISED -

**STATE OF ILLINOIS
DEPARTMENT OF TRANSPORTATION**

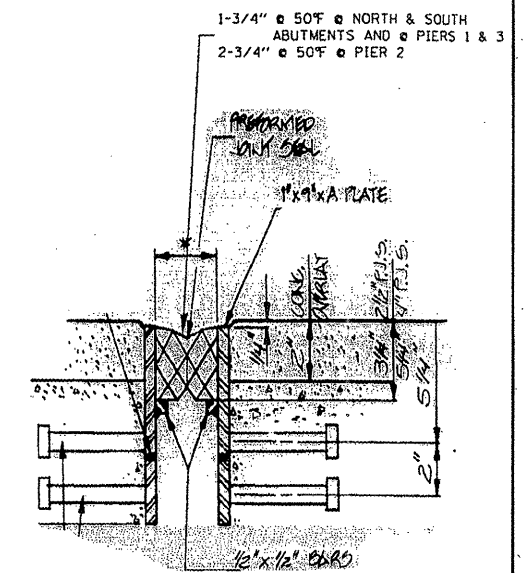
WINGWALL STRUCTURE REPAIRS

SCALE: SHEET NO. OF SHEETS STA. TO STA.

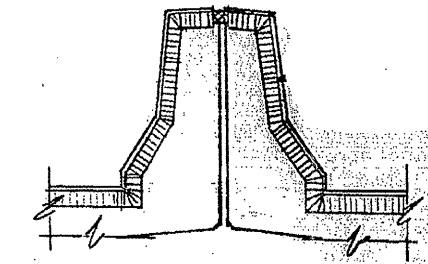
F.A.P. RTE.	SECTION	COUNTY	TOTAL SHEETS	SHEET NO.
344	543 R-HB-BR	DUPAGE	19	13
CONTRACT NO. 60L52			ILLINOIS FED. AID PROJECT	



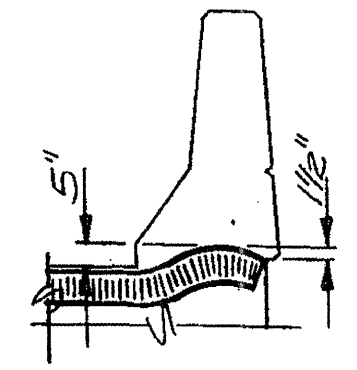
PLAN



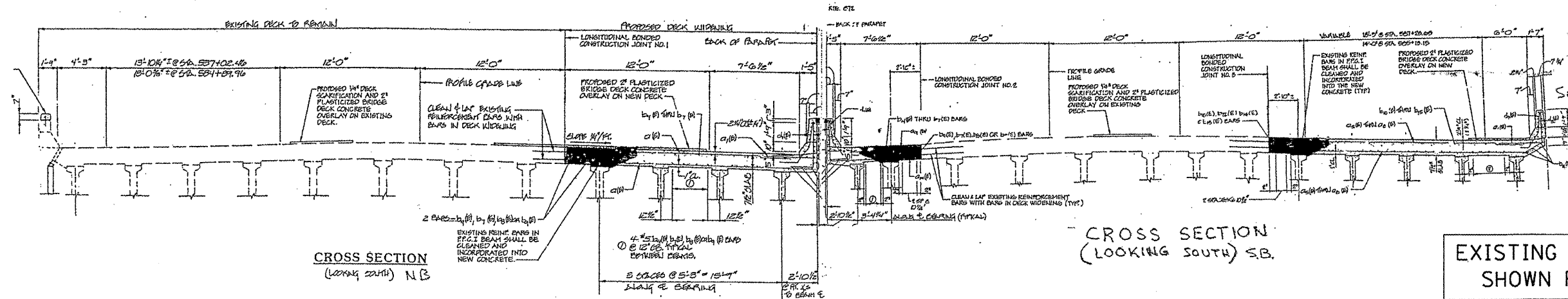
EXISTING SILICONE JOINT SEALER DETAIL



EXISTING TYPICAL AT MEDIAN PARAPET



EXISTING TYPICAL END OF SEAL TREATMENT



CROSS SECTION (LOOKING SOUTH) N.B.

CROSS SECTION (LOOKING SOUTH) S.B.

EXISTING PLAN & CROSS SECTIONS SHOWN FOR INFORMATION ONLY

FILE NAME =
 USER NAME = nathanbo

DESIGNED - TO
 DRAWN - TO
 CHECKED - BN
 DATE - 05-09-2011

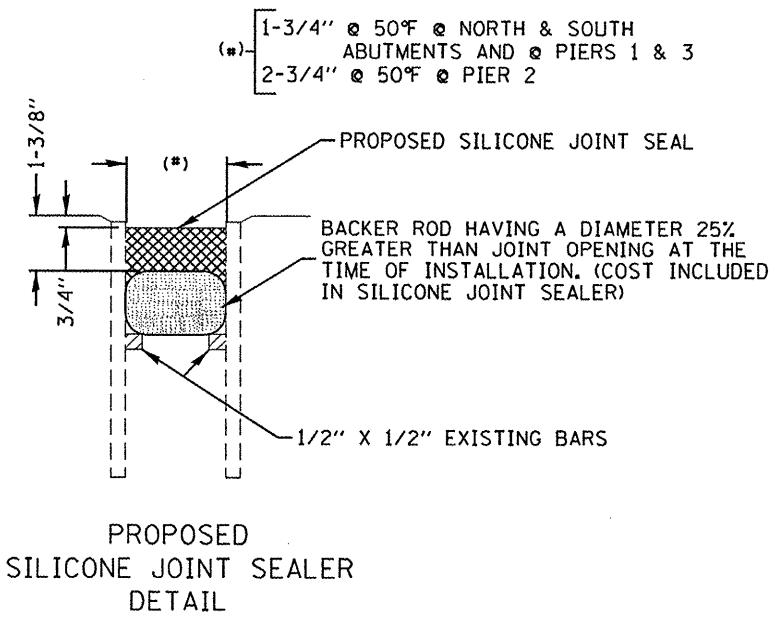
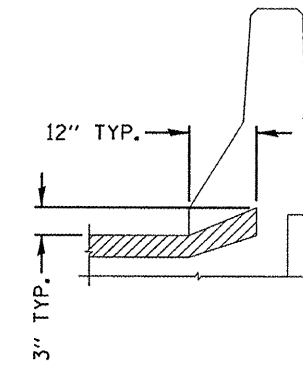
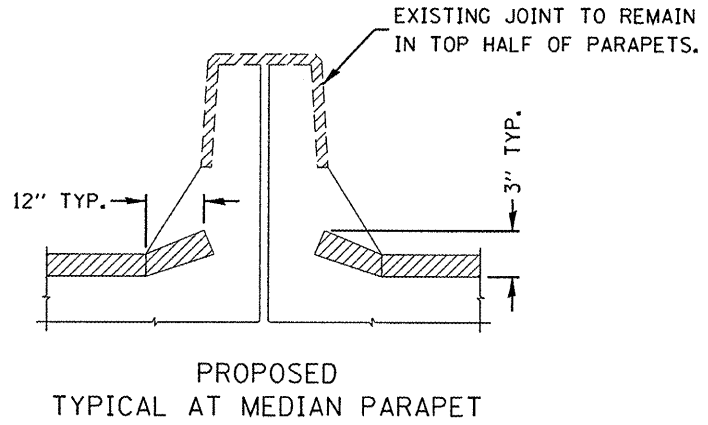
REVISED -
 REVISED -
 REVISED -
 REVISED -

STATE OF ILLINOIS DEPARTMENT OF TRANSPORTATION

REPLACEMENT OF PJS WITH SILICONE SEAL

SCALE: SHEET NO. OF SHEETS STA. TO STA.

F.A.P. RTE. 344	SECTION 543 R-HB-BR	COUNTY DUPAGE	TOTAL SHEETS 19	SHEET NO. 14
ILLINOIS FED. AID PROJECT			CONTRACT NO. 60LS2	



PROPOSED TYPICAL END OF SEAL TREATMENT

REPLACE PREFORMED JOINT SEAL WITH SILICONE SEAL

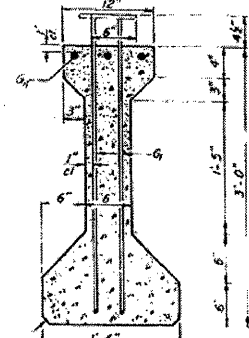
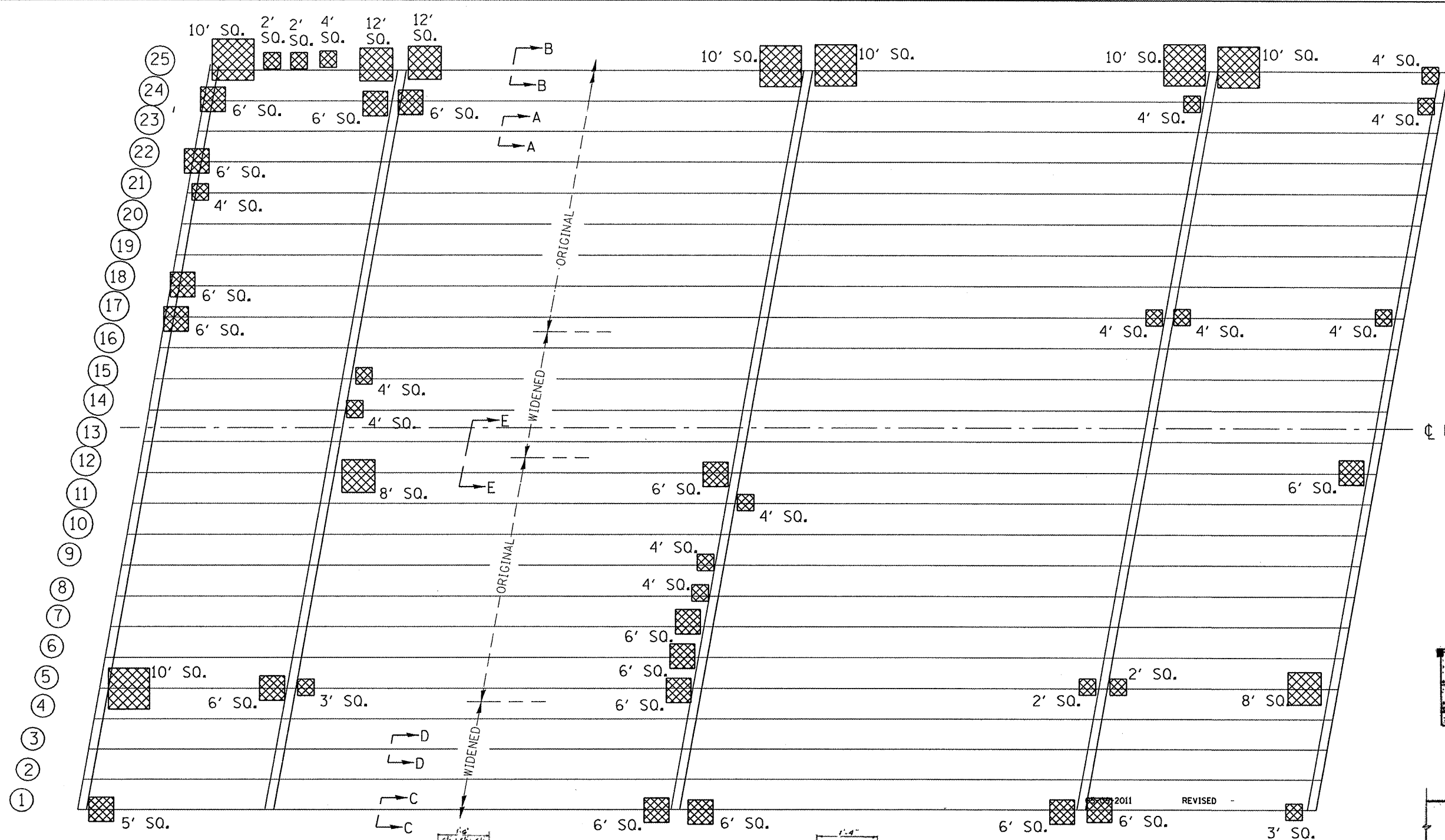
JOINT SEAL BILL OF MATERIAL	UNIT	QUANTITY
SILICONE JOINT SEALER 1-3/4"	FOOT	575
SILICONE JOINT SEALER 2-3/4"	FOOT	150

FILE NAME =	USER NAME = notherbc	DESIGNED - TO	REVISED -
c:\pwork\pwork\dot\notherbc\40258101\0176510-shr-pln.dgn		DRAWN - TO	REVISED -
PLOT SCALE = 100.0000' / IN.		CHECKED - BN	REVISED -
PLOT DATE = 5/12/2011		DATE - 05-09-2011	REVISED -

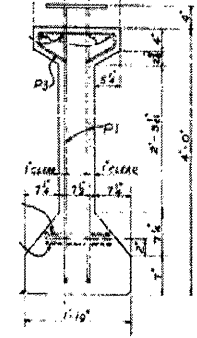
STATE OF ILLINOIS
DEPARTMENT OF TRANSPORTATION

REPLACEMENT OF PJS WITH SILICONE SEAL			
SCALE:	SHEET NO.	OF SHEETS	STA. TO STA.

F.A.P. RTE.	SECTION	COUNTY	TOTAL SHEETS	SHEET NO.
344	543 R-HB-BR	DUPAGE	19	15
CONTRACT NO. 60L52				
ILLINOIS FED. AID PROJECT				

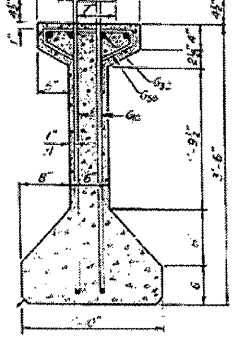


I-BEAM WIDENED SECTION C-C

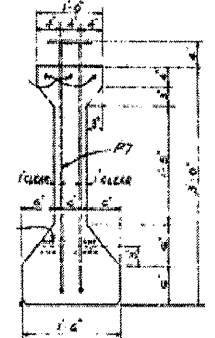


I-BEAM ORIGINAL SECTION A-A (TYP.)

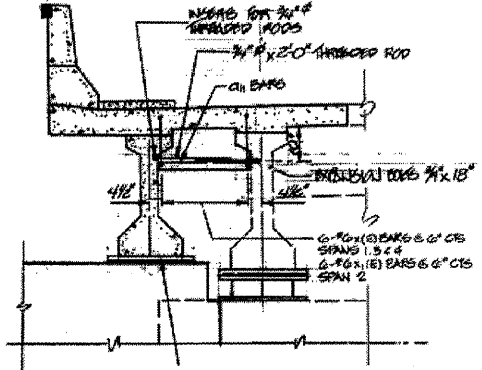
I-BEAM REPAIR



I-BEAM WIDENED SECTION D-D (TYP.)



I-BEAM ORIGINAL SECTION B-B



EXISTING I-BEAM SECTION E-E

AREA OF BEAM REPAIR WITH POLYMER MODIFIED PORTLAND CEMENT MORTAR

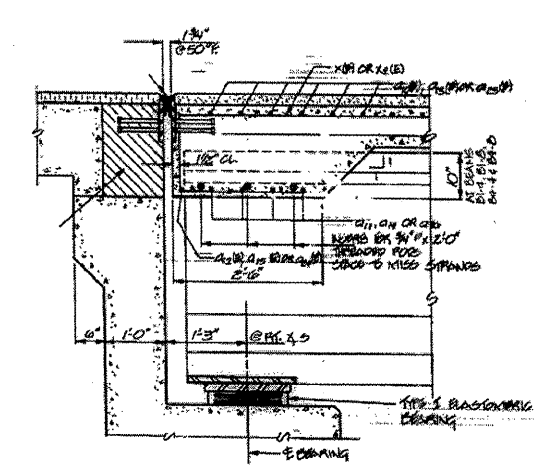
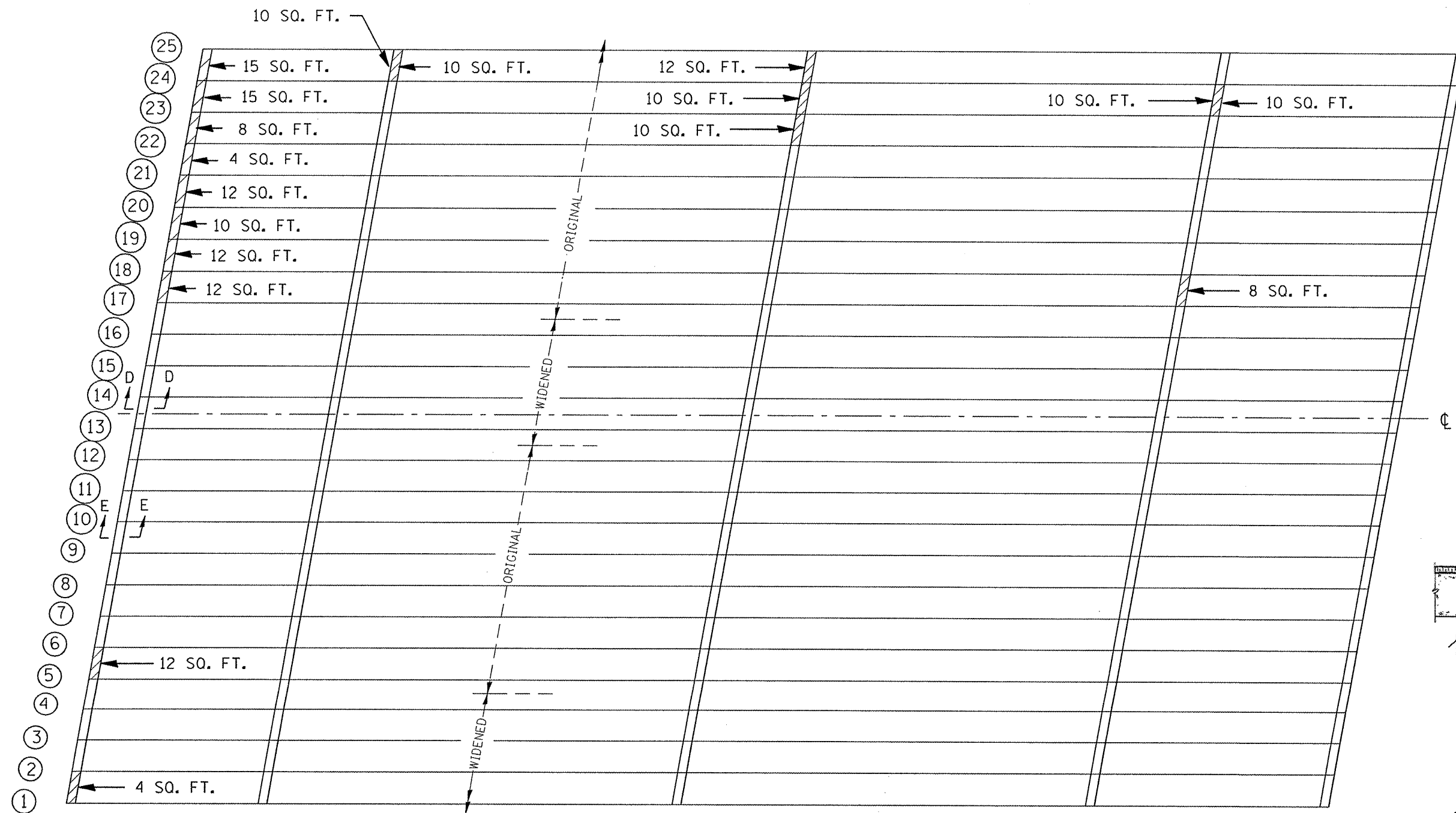
BEAM REPAIR BILL OF MATERIAL		UNIT	QUANTITY
POLYMER MODIFIED PORTLAND CEMENT MORTAR		SOFT	267

FILE NAME =	USER NAME = nathanbc	DESIGNED - TO	REVISED -
c:\pwork\pwork\matherbc\d0258101\DI76510-sht-plan.dgn	610-sht-plan.dgn	DRAWN - TO	REVISED -
	PLOT SCALE = 100.0000' / IN.	CHECKED - BN	REVISED -
	PLOT DATE = 5/12/2011	DATE	

STATE OF ILLINOIS
DEPARTMENT OF TRANSPORTATION

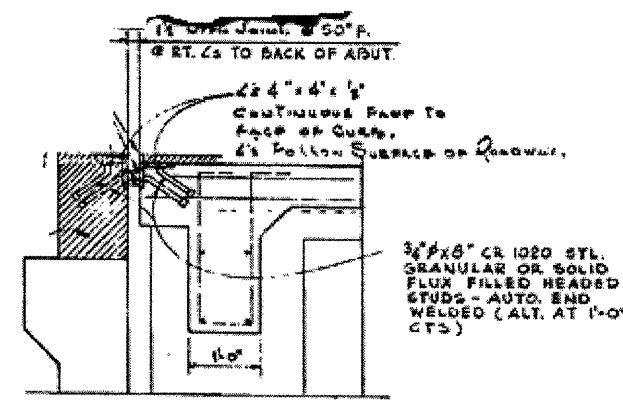
PCC I-BEAM REPAIR LOCATIONS			
SCALE:	SHEET NO.	OF SHEETS	STA. TO STA.

F.A.P. RTE.	SECTION	COUNTY	TOTAL SHEETS	SHEET NO.
344	543 R-HB-BR	DUPAGE	19	16
			CONTRACT NO. 60L52	
ILLINOIS FED. AID PROJECT				



SECTION D-D THRU DECK WIDENING AT ABUTMENTS

DIAPHRAGM REPAIR



SECTION E-E THRU ORIGINAL DECK ABUTMENTS

AREA OF DIAPHRAGM REPAIR WITH STRUCTURAL REPAIR OF CONCRETE ≤ 5"

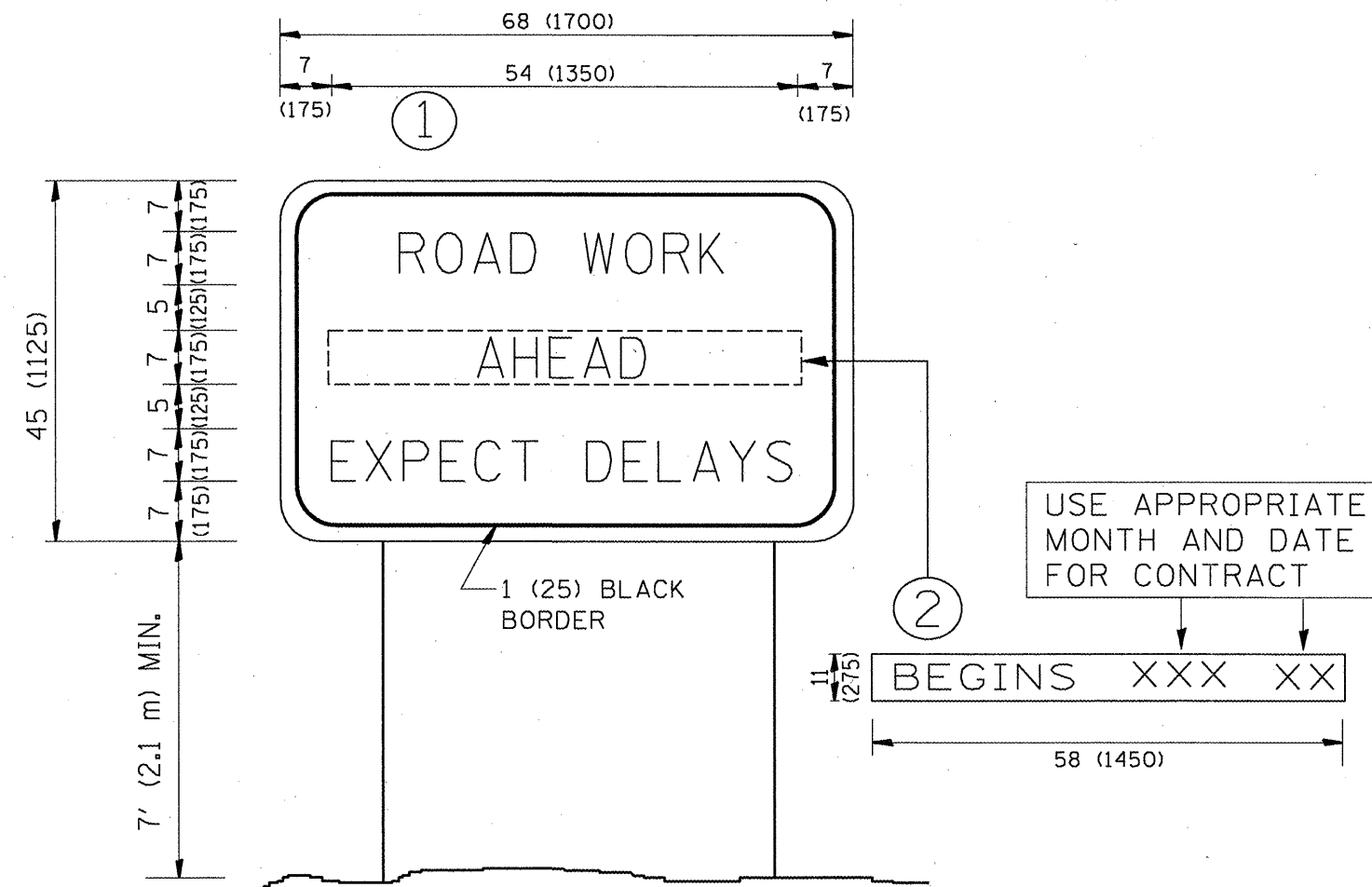
DIAPHRAGM REPAIR BILL OF MATERIAL	UNIT	QUANTITY
STRUCTURAL REPAIR OF CONCRETE ≤ 5"	SOFT	184

FILE NAME =	USER NAME = nathanbc	DESIGNED - TO	REVISED -
c:\pwork\pwork\dot\nathanbc\d0258101\0170510-sht-plan.dgn		DRAWN - TO	REVISED -
		CHECKED - BN	REVISED -
		DATE - 05-09-2011	REVISED -

STATE OF ILLINOIS
DEPARTMENT OF TRANSPORTATION

SCALE:	SHEET NO.	OF	SHEETS	STA.	TO STA.
--------	-----------	----	--------	------	---------

F.A.P. RTE.	SECTION	COUNTY	TOTAL SHEETS	SHEET NO.
344	543 R-HB-BR	DUPAGE	19	17
CONTRACT NO. 60L52				
ILLINOIS FED. AID PROJECT				



NOTES:

1. USE BLACK LETTERING ON ORANGE BACKGROUND.
2. ERECT SIGNS IN ADVANCE OF THE LOCATION FOR THE "ROAD CONSTRUCTION AHEAD" SIGN AT LOCATIONS AS DIRECTED BY THE ENGINEER.
3. ERECT SIGN ① WITH INSTALLED PANEL ② ONE WEEK PRIOR TO THE START OF CONSTRUCTION.
4. REMOVE PANEL ② SOON AFTER THE START OF CONSTRUCTION.
5. SEE SPECIAL PROVISION FOR "TEMPORARY INFORMATION SIGNING" FOR ADDITIONAL INFORMATION.
6. ONE SIGN ASSEMBLY EQUALS 25.70 SQ. FT. (2.3 SQ. M.)
7. SHALL BE PAID FOR AS TEMPORARY INFORMATION SIGNING.

ALL DIMENSIONS ARE IN INCHES (MILLIMETERS) UNLESS OTHERWISE SHOWN.

FILE NAME =	USER NAME = nathanbc	DESIGNED -	REVISED - R. MIRS 09-15-97
cs:\pw\work\pwidot\nathanbc\d0258101\DistStd.dgn		DRAWN -	REVISED - R. MIRS 12-11-97
		CHECKED -	REVISED - T. RAMMACHER 02-02-99
		DATE -	REVISED - C. JUCIUS 01-31-07

**STATE OF ILLINOIS
DEPARTMENT OF TRANSPORTATION**

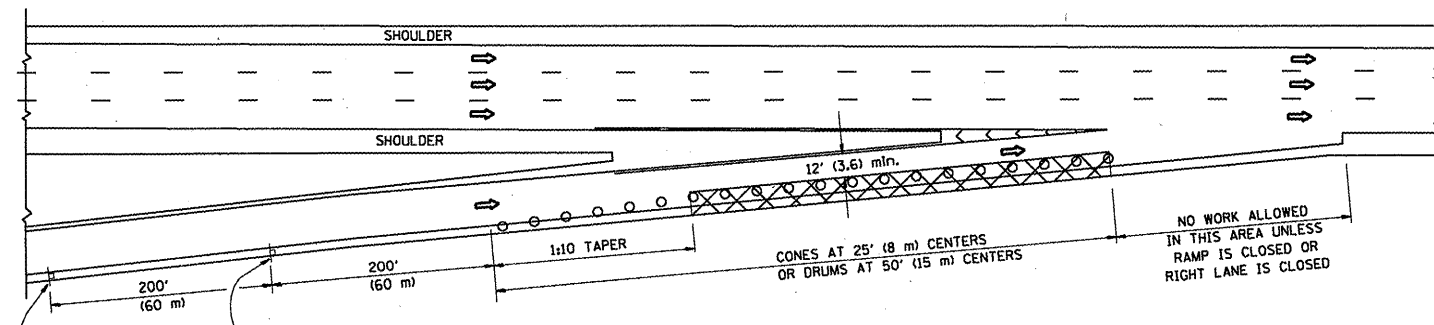
**ARTERIAL ROAD
INFORMATION SIGN**

SCALE: NONE SHEET NO. 1 OF 1 SHEETS STA. TO STA.

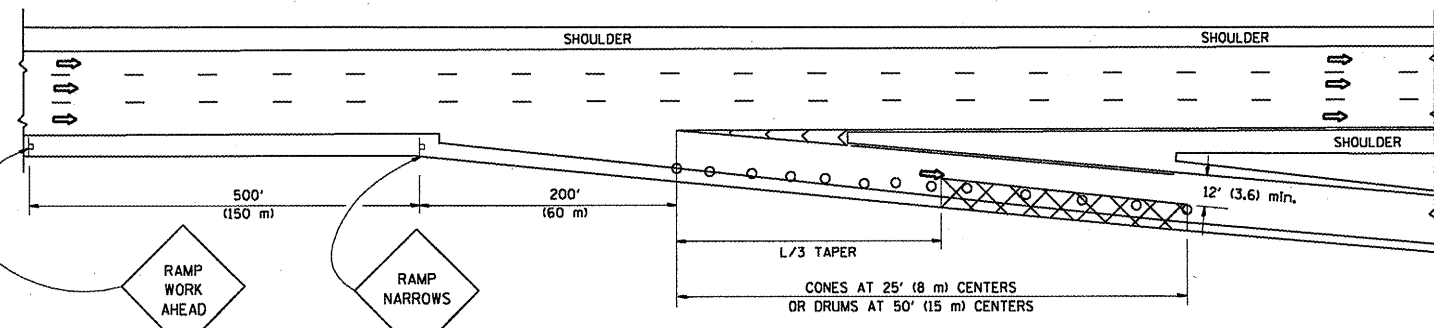
F.A.P. RTE.	SECTION	COUNTY	TOTAL SHEETS	SHEET NO.
344	543 R-HB-BR	DUPAGE	19	18
TC-22		CONTRACT NO. 60L52		
FED. ROAD DIST. NO. 1 ILLINOIS FED. AID PROJECT				

PARTIAL RAMP CLOSURE DETAILS

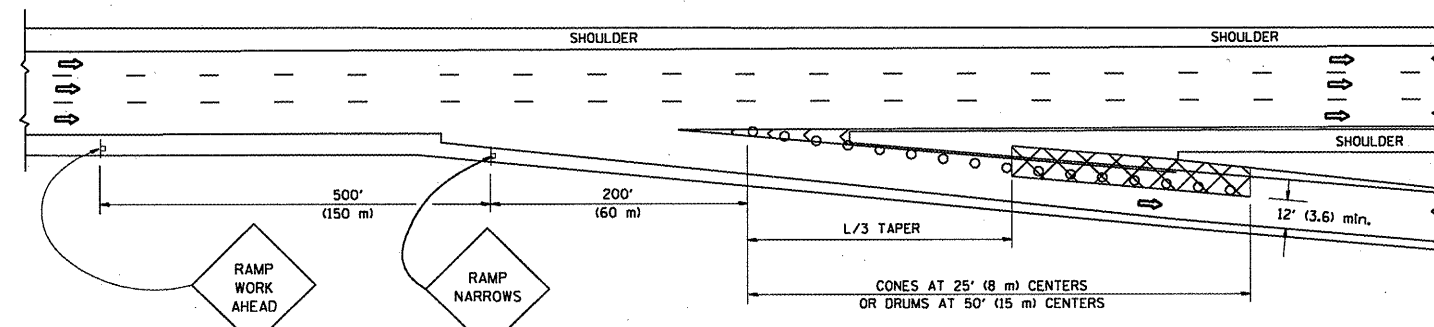
SHOULDER CLOSURE DETAILS



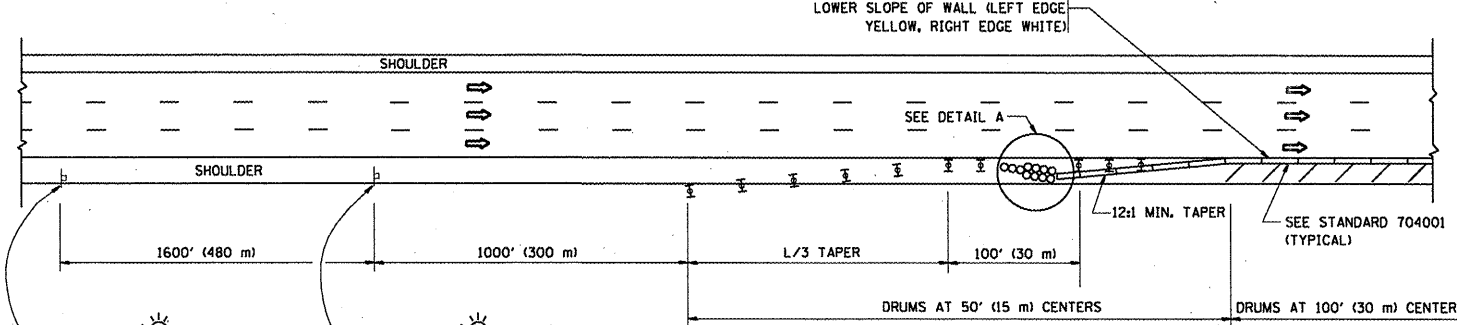
TYPICAL ENTRANCE RAMP



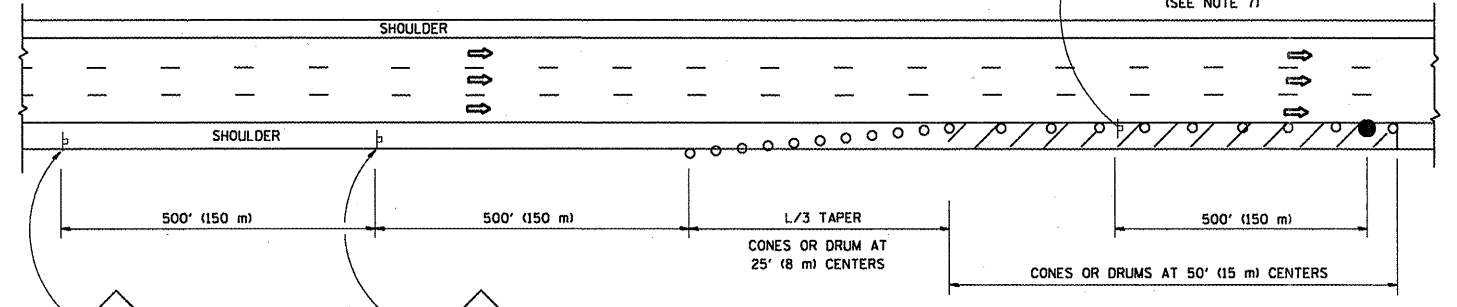
TYPICAL EXIT RAMP



TYPICAL EXIT RAMP

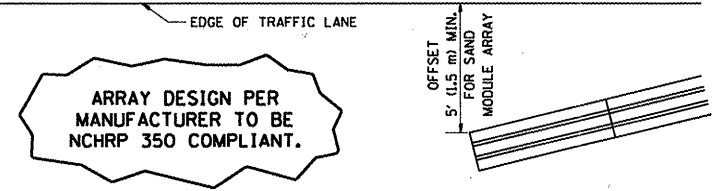


PERMANENT SHOULDER CLOSURE



DAYTIME SHOULDER CLOSURE

THIS DETAIL IS USED WHERE:
 1. VEHICLES, EQUIPMENT, WORKERS OR THEIR ACTIVITIES ENCRDACH IN AN AREA CLOSER THAN 15' (4.5 m) TO THE EDGE OF PAVEMENT FOR A PERIOD IN EXCESS OF 15 MINUTES.



ARRAY DESIGN PER MANUFACTURER TO BE NCHRP 350 COMPLIANT.

**DETAIL "A"
 IMPACT ATTENUATOR, TEMPORARY
 (SEE NOTE 5)**

ALL DIMENSIONS ARE IN INCHES (MILLIMETERS) UNLESS OTHERWISE SHOWN.

SYMBOLS

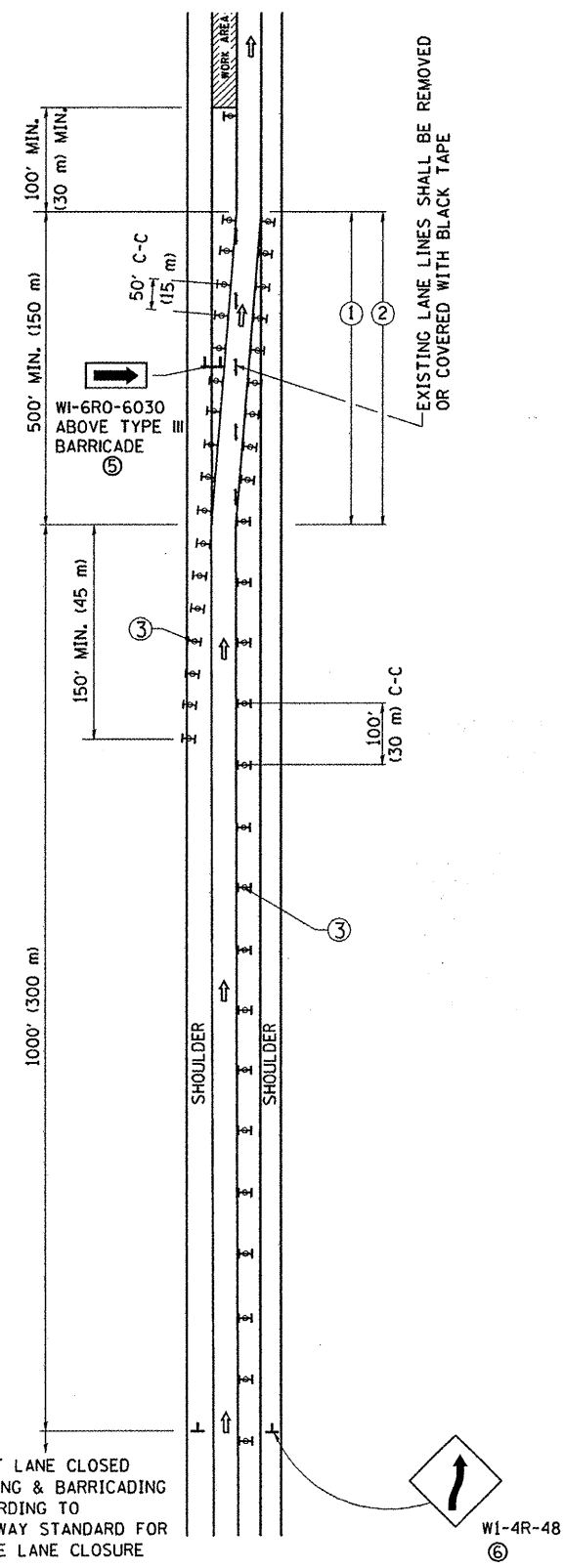
- ACTIVE WORK AREA
- SIGN ON PORTABLE OR PERMANENT SUPPORT
- FLAGGER WITH CONTROL SIGN
- TYPE II BARRICADE, DRUM OR VERTICAL BARRICADE WITH STEADY BURN MONO-DIRECTIONAL LIGHT
- CONE, DRUM OR BARRICADE

GENERAL NOTES

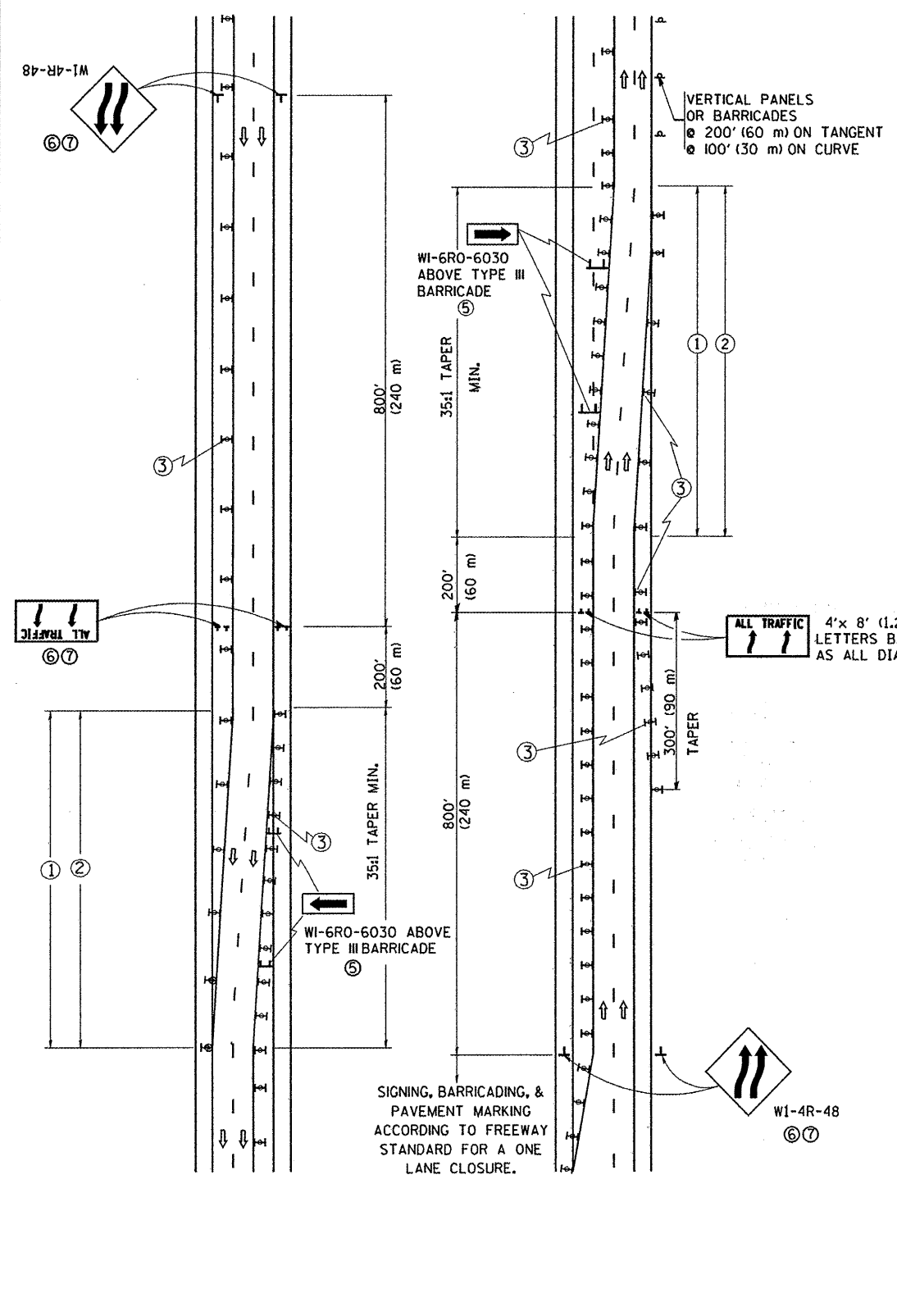
1. THE "L" DISTANCE EQUALS:
 SPEED LIMIT FORMULAS
 45 mph (80 km/h) METRIC ENGLISH
 OR GREATER: L=0.65(W/S) L=(W/S)
 W = WIDTH OF OFFSET IN FEET (METERS)
 S = NORMAL POSTED SPEED MPH (KM/H)
2. PLASTIC DRUMS WITH HIGH PERFORMANCE REFLECTIVE SHEETING AND STEADY BURNING LIGHTS ARE REQUIRED FOR ALL NIGHTTIME CLOSURES.
3. ALL SIGNS SHALL BE POST MOUNTED IF THE CLOSURE TIME EXCEEDS FOUR DAYS.
4. FLASHING LIGHTS SHALL BE USED DURING THE HOURS OF DARKNESS AND SHALL BE INSTALLED ABOVE THE FIRST TWO SETS OF SIGNS.
5. THE IMPACT ATTENUATOR, TEMPORARY IS NOT REQUIRED WHEN THE TEMPORARY CONCRETE BARRIER WALL IS PROTECTED BY OR IS TIED INTO THE EXISTING GUARDRAIL. IF OFFSET IS LESS THAN 5 FEET USE NARROW USE TYPE DEVICE TO MEET NCHRP350.
6. AUTHORIZATION FROM THE DISTRICT'S BUREAU OF TRAFFIC IS REQUIRED FOR ALL FREEWAY CLOSURES.
7. THE FLAGGER AND FLAGGER SIGN ARE REQUIRED AT THE ABOVE WORK SITES WHEN:
 a. FOUR OR MORE WORK VEHICLES ENTER THE TRAFFIC LANES IN A ONE HOUR PERIOD.
 b. THE WORK AVTIVITY REQUIRES FREQUENT ENCRDACHMENT INTO THE LANE OPEN TO TRAFFIC.
 THE FLAGGER SHALL BE STATIONED APPROXIMATELY 100' (30 m) TO 200' (60 m) IN ADVANCE OF THE WORKERS.

FILE NAME = c:\pwwork\pwwork\metherbo\d2258101\Dist	USER NAME = metherbo	DESIGNED - -	REVISED - 04-03	STATE OF ILLINOIS DEPARTMENT OF TRANSPORTATION	TRAFFIC CONTROL DETAILS FOR FREEWAY SHOULDER CLOSURES AND PARTIAL RAMP CLOSURES	F.A.P. RTE. 344	SECTION 543 R-HB-BR	COUNTY DUPAGE	TOTAL SHEETS 19	SHEET NO. 19	
PLOT SCALE = 100.0000' / IN.	DRAWN - D.W.S.	CHECKED - -	REVISED - J.A.F. 12-06			SCALE: NONE	SHEET NO. 1 OF 1 SHEETS	STA. TO STA.	CONTRACT NO. 60LS2		
PLOT DATE = 4/11/2011	DATE - 11-96	REVISED - S.P.B. 01-07	REVISED - S.P.B. 12-09					TC-17			
								FED. ROAD DIST. NO. 1 ILLINOIS FED. AID PROJECT			

SINGLE LANE WEAVE



MULTI-LANE WEAVE



GENERAL NOTES

- EXISTING CONFLICTING PAVEMENT MARKING LINES SHALL BE REMOVED. PAVEMENT MARKING REMOVAL SHALL NOT BE REQUIRED FOR SINGLE LANE WEAVES UNDER 24 HOURS IN DURATION.
- CONTINUOUS REFLECTIVE TEMPORARY PAVEMENT MARKING TAPE SHALL BE PLACED THROUGHOUT THE TAPER AND FOR 300' (90 m) ALONG SIDE THE WORK AREA WHERE THE CLOSURE TIME IS GREATER THAN FOURTEEN DAYS. THE LEFT EDGE LINE SHALL BE YELLOW AND THE RIGHT EDGE LINE SHALL BE WHITE. FOR MULTI-LANE WEAVES LANE LINES SHALL BE 5 INCH, 10'-30' (3 m-9 m) SKIP DASH, WHITE.
- PLASTIC DRUMS WITH STEADY BURN LIGHTS AT 50' (15 m) C-C SPACING IN TAPERS AND 100' (30 m) C-C SPACING IN TANGENTS.
- ALL SIGNS SHALL BE POST MOUNTED IF THE CLOSURE TIME EXCEEDS FOUR DAYS.
- IF A TYPE III BARRICADE WITH AN ATTACHED SIGN PANEL WHICH MEETS NCHRP 350 IS NOT AVAILABLE, THE SIGNS MAY BE MOUNTED ON NCHRP 350 TEMPORARY SIGN SUPPORTS. TYPE III BARRICADES MAY BE OMITTED FOR SINGLE-LANE WEAVES UNDER 24-HOURS IN DURATION. W1-6 SIGNS WILL STILL BE REQUIRED. IF THE WIDTH OF OFFSET IS LESS THAN 6' THEN THE TYPE III BARRICADE WITH ATTACHED ARROW SIGN PANEL CAN BE ELIMINATED IN THE TAPER AREAS.
- WHEN THE LENGTH OF THE SHIFTED SEGMENT (DISTANCE BETWEEN WEAVE POINTS) IS LESS THAN 1500', DOUBLE REVERSE CURVE SIGNS (W24-1) SHOULD BE USED INSTEAD OF THE REVERSE CURVE (W1-4) SIGNS. ARROWS ON THE 4'X8' "ALL TRAFFIC" SIGNS SHALL BE THE SAME SHAPE.
- THE NUMBER OF ARROWS ON THESE SIGNS SHALL MATCH THE NUMBER OF LANES OPEN TO TRAFFIC.

SYMBOLS

- DIRECTION OF TRAFFIC
- WORK AREA
- SIGN ON PORTABLE OR PERMANENT SUPPORT
- TYPE II BARRICADE OR DRUM WITH MONO-DIRECTIONAL STEADY BURNING LIGHT
- W1-4R-48
- W24-1-48

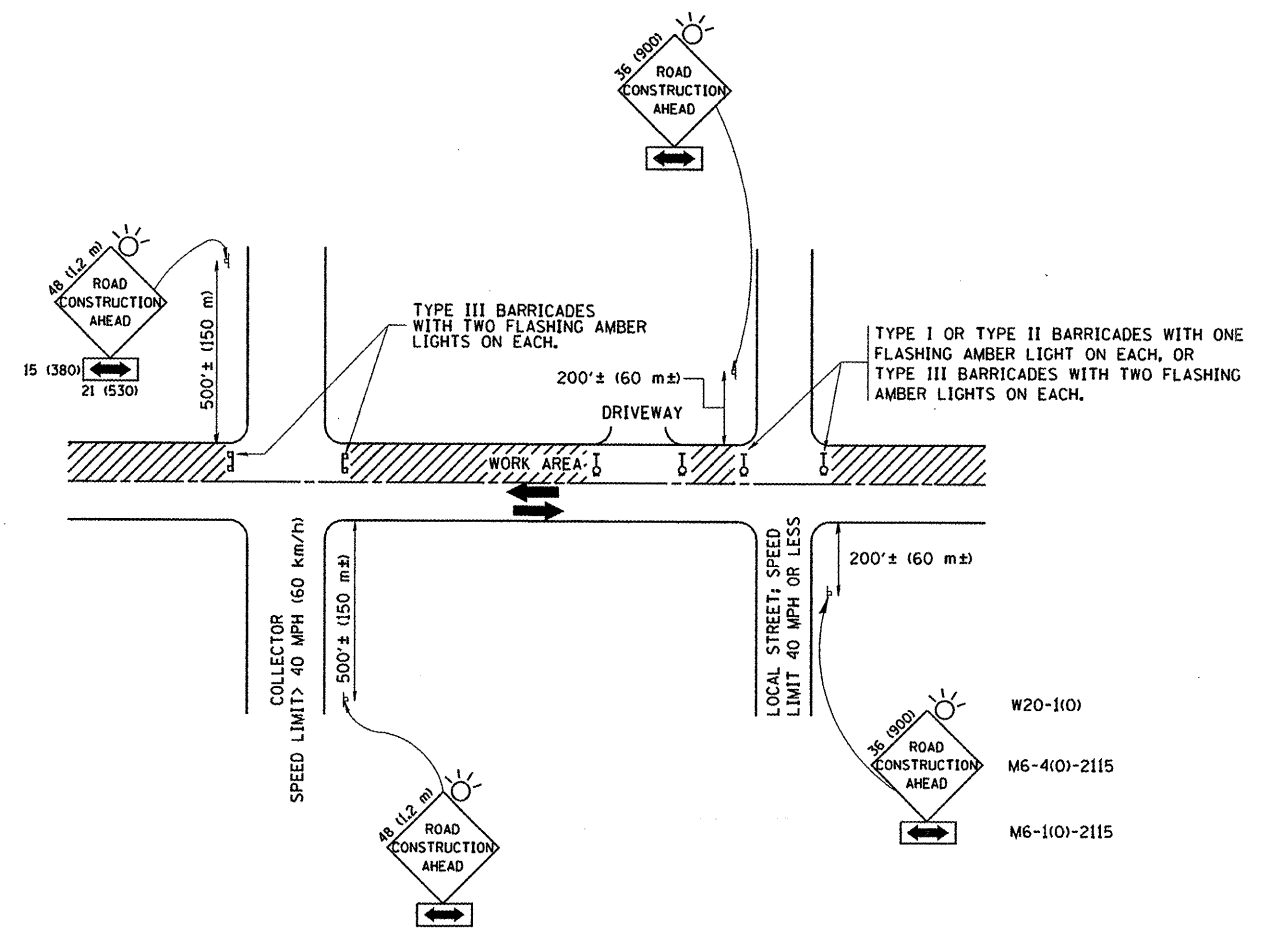
ALL DIMENSIONS ARE IN INCHES (MILLIMETERS) UNLESS OTHERWISE SHOWN

FILE NAME =	USER NAME = nathanbc	DESIGNED - DWS	REVISED - JAF 01-03
\\pwwork\pwwork\pwwork\pwwork\d258101\019\pwwork.dgn		DRAWN -	REVISED - JAF 02-06
PLOT SCALE = 100.0000 / 1 IN.		CHECKED -	REVISED - SPB 01-07
PLOT DATE = 5/16/2011		DATE - 02-87	REVISED - SPB 12-09

STATE OF ILLINOIS
DEPARTMENT OF TRANSPORTATION

TRAFFIC CONTROL DETAILS FOR FREEWAY SINGLE & MULTI-LANE WEAVE	
SCALE: NONE	SHEET NO. 1 OF 1 SHEETS STA. TO STA.

F.A.P. RTE. 344	SECTION 543 R-HB-BR	COUNTY	TOTAL SHEETS 19	SHEET NO. 19A
TC-09		CONTRACT NO. 60L52		
FED. ROAD DIST. NO. 1 ILLINOIS FED. AID PROJECT				



TRAFFIC CONTROL AND PROTECTION FOR SIDE ROADS, INTERSECTIONS, AND DRIVEWAYS

NOTES:

- A. FOR NO LANE RESTRICTION ON THE SIDE ROAD OR DRIVEWAYS
 - 1. SIDE ROAD WITH A SPEED LIMIT OF 40 MPH (60 km/h) OR LESS AS SHOWN ON THE DRAWING AND AS DIRECTED BY THE ENGINEER:
 - a) ONE ROAD CONSTRUCTION AHEAD SIGN 36 x 36 (900x900) WITH A FLASHER AND FLAG MOUNTED ON IT APPROXIMATELY 200' (60 m) IN ADVANCE OF THE MAIN ROUTE.
 - b) THE CLOSED PORTION OF THE MAIN ROUTE SHALL BE PROTECTED BY BLOCKING WITH TYPE I, TYPE II OR TYPE III BARRICADES, 1/3 OF THE CROSS SECTION OF THE CLOSED PORTION.
 - 2. SIDE ROAD WITH A SPEED LIMIT GREATER THAN 40 MPH (60 km/h) AS SHOWN ON THE DRAWING AND AS DIRECTED BY THE ENGINEER:
 - a) ONE ROAD CONSTRUCTION AHEAD SIGN 48 x 48 (1.2 m x 1.2 m) WITH A FLASHER MOUNTED ON IT APPROXIMATELY 500' (150 m) IN ADVANCE OF THE MAIN ROUTE.
 - b) THE CLOSED PORTION OF THE MAIN ROUTE SHALL BE PROTECTED BY BLOCKING WITH TYPE III BARRICADES, 1/2 OF THE CROSS SECTION OF THE CLOSED PORTION.
- 3. WHEN THE SIDE ROAD LIES BETWEEN THE BEGINNING OF THE MAINLINE SIGNING AND THE WORK ZONE, A SINGLE HEADED ARROW (M6-1) SHALL BE USED IN LIEU OF THE DOUBLE HEADED ARROW (M6-4).
- B. FOR A LANE CLOSURE ON A SIDE ROAD OR DRIVEWAY:
 - USE APPLICABLE PORTIONS OF THE TYPICAL APPLICATION OF TRAFFIC CONTROL DEVICES (STD. 701501, STD. 701606 OR THE APPROPRIATE STANDARD). THE SPACING OF SIGNS AND BARRICADES SHALL BE ADJUSTED FOR FIELD CONDITIONS AS DIRECTED BY THE ENGINEER. THE DIRECTIONAL ARROW SHALL BE COVERED OR REMOVED WHEN NO LONGER CONSISTENT WITH THE SIDE ROAD LANE CLOSURE.
- C. ADVANCE WARNING SIGNS ARE TO BE OMITTED ON DRIVEWAY UNLESS OTHERWISE NOTED.
- D. THE TRAFFIC CONTROL AND PROTECTION FOR SIDE ROADS, INTERSECTIONS, AND DRIVEWAYS SHALL BE INCIDENTAL TO THE COST OF SPECIFIED TRAFFIC CONTROL STANDARDS OR ITEMS.

All dimensions are in millimeters (Inches) unless otherwise shown.

FILE NAME =	USER NAME = nathanbo	DESIGNED - LHA	REVISED - J. OBERLE 10-18-95
ct:\pw\work\pwsdot\nathanbo\0258101\Dist	std.dgn	DRAWN -	REVISED - A. HOUSEH 03-06-96
	PLOT SCALE = 100.0000 / IN.	CHECKED -	REVISED - A. HOUSEH 10-15-96
	PLOT DATE = 5/16/2011	DATE - 06-89	REVISED - T. RAMMACHER 01-06-00

**STATE OF ILLINOIS
DEPARTMENT OF TRANSPORTATION**

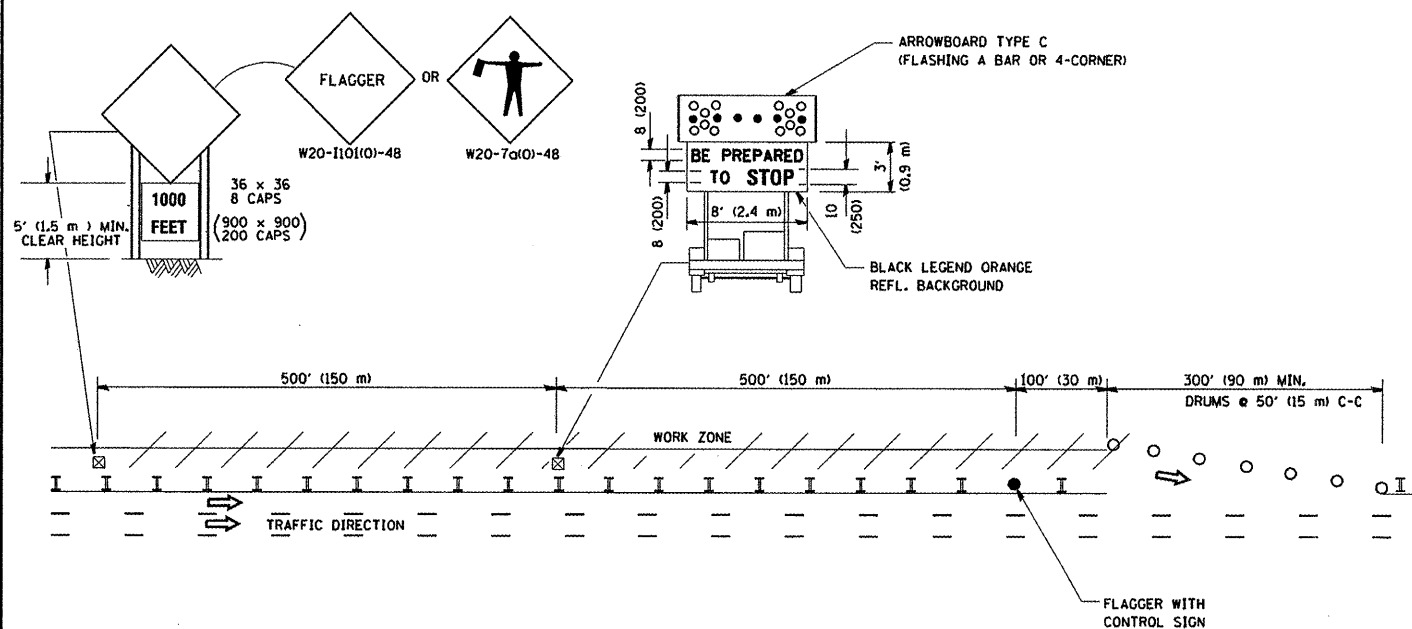
**TRAFFIC CONTROL AND PROTECTION FOR
SIDE ROADS, INTERSECTIONS, AND DRIVEWAYS**

SCALE: NONE SHEET NO. 1 OF 1 SHEETS STA. TO STA.

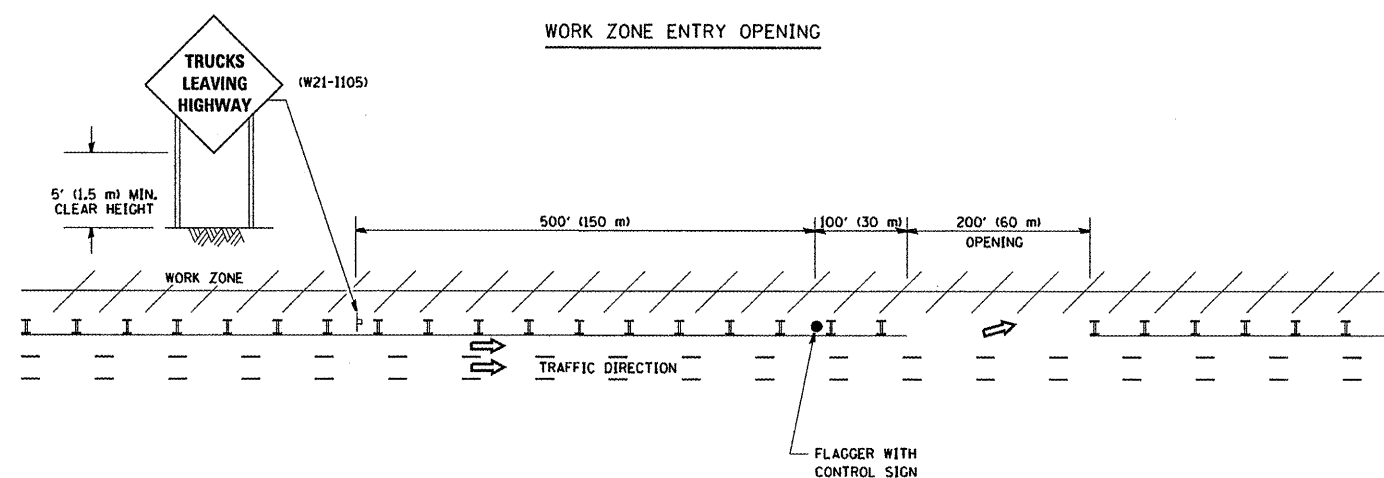
F.A.P. RTE.	SECTION	COUNTY	TOTAL SHEETS	SHEET NO.
344	543 R-HB-BR		19	19B
	TC-10	DUPAGE	CONTRACT NO. 60L52	
FED. ROAD DIST. NO. 1 ILLINOIS FED. AID PROJECT				

SIGNING FOR FLAGGING OPERATIONS AT WORK ZONE OPENINGS

WORK ZONE EXIT OPENING



WORK ZONE ENTRY OPENING



NOTES:

1. THE ARROWBOARD, THE FLAGGER AHEAD SIGN AND THE TRUCKS LEAVING HIGHWAY SIGN SHALL BE REMOVED OR TURNED AWAY FROM TRAFFIC AND THE EXIT AND ENTRY OPENINGS SHALL BE CLOSED WHEN THE FLAGGING OPERATION CEASES. NON OPERATING EQUIPMENT SHALL COMPLY WITH ARTICLE 701.11
2. WORK ZONE EXIT OPENINGS SHOULD BE A MINIMUM OF ONE HALF MILE APART.
3. EXITING THE WORK ZONE AT ANY PLACE OTHER THAN AT A WORK ZONE EXIT OPENING WILL BE PROHIBITED.
4. ALL VEHICLES SHALL ENTER THE WORK ZONE AT ENTRY OPENINGS, USING THEIR TURN SIGNALS TO WARN MOTORISTS

ALL DIMENSIONS ARE IN INCHES (MILLIMETERS) UNLESS OTHERWISE SHOWN

FILE NAME =	USER NAME = nathanbc	DESIGNED -	REVISED - J.A.F. 04-03
cat\pwwork\pwwidot\nathanbc\0258101\01s	std.dgn	DRAWN -	REVISED - J.A.F. 02-06
	PLOT SCALE = 100.0000 / IN.	CHECKED -	REVISED - S.P.B. 01-07
	PLOT DATE = 5/16/2011	DATE -	REVISED - S.P.B. 12-09

STATE OF ILLINOIS
DEPARTMENT OF TRANSPORTATION

SIGNING FOR FLAGGING OPERATIONS
AT WORK ZONE OPENINGS

SCALE: NONE SHEET NO. 1 OF 1 SHEETS STA. TO STA.

F.A.P. RTE.	SECTION	COUNTY	TOTAL SHEETS	SHEET NO.
344	543 R-HB-BR	DUPAGE	19	19C
TC-18			CONTRACT NO. 60LS2	
FED. ROAD DIST. NO. 1 ILLINOIS FED. AID PROJECT				