
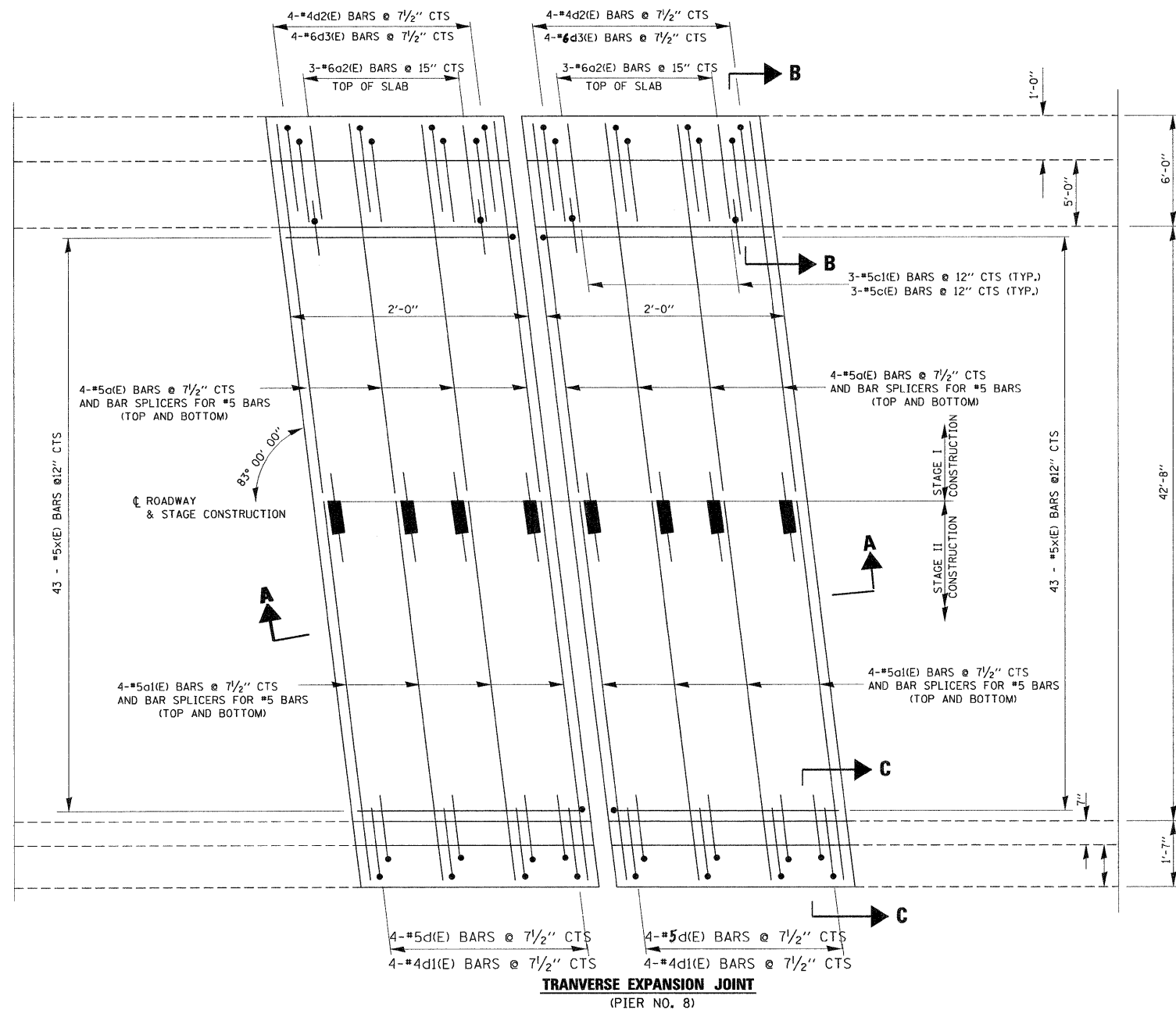
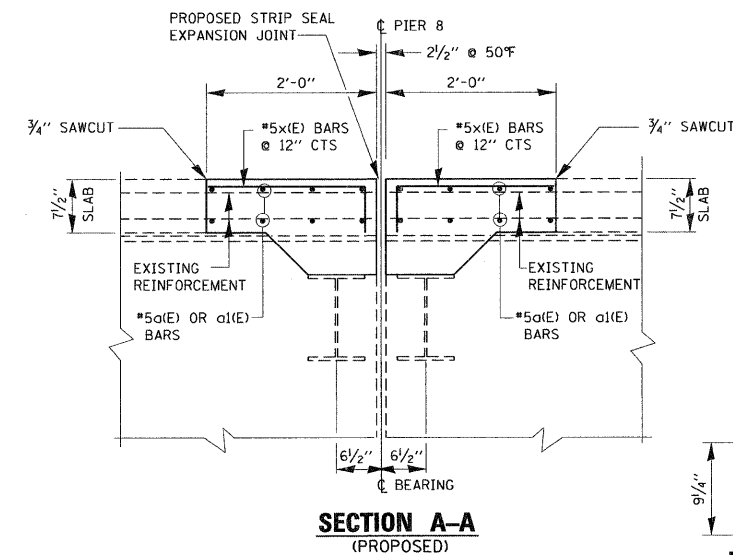
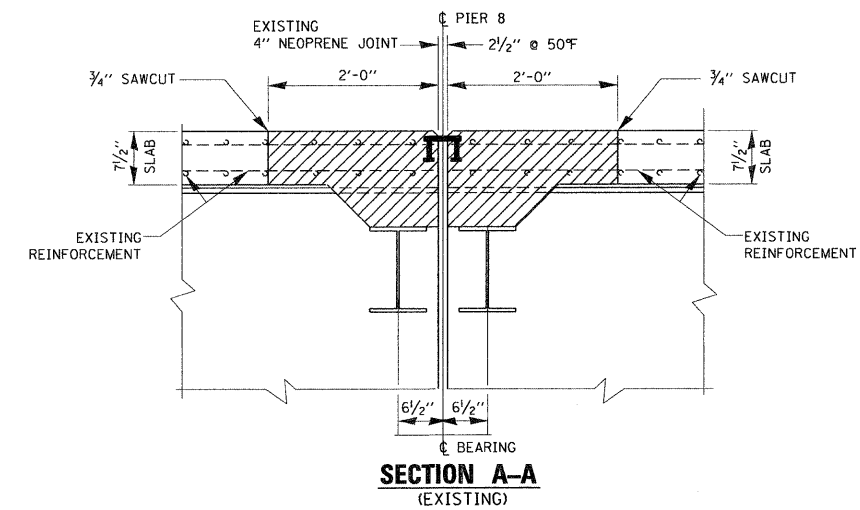
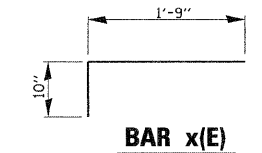
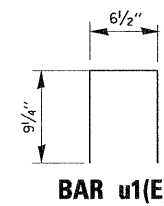


**BILL OF MATERIALS**

BAR	NO.	SIZE	LENGTH	SHARE
a(E)	16	#5	26'-9"	
a1(E)	16	#5	23'-0"	
a2(E)	6	#6	4'-0"	
c(E)	6	#5	4'-9"	
c1(E)	6	#4	2'-6"	
d(E)	8	#5	4'-0"	J
d1(E)	8	#4	3'-9"	J
d2(E)	8	#4	4'-0"	L
d3(E)	8	#6	3'-9"	L
u1(E)	2	#4	2'-1"	□
x(E)	86	#5	2'-7"	□
REINFORCEMENT BARS (EPOXY COATED)			POUND	1265
CONCRETE REMOVAL			CU.YD.	6.56
CONCRETE SUPERSRUCTURE			CU.YD.	6.56

**LEGEND:**

 HATCHED AREA INDICATES CONCRETE REMOVAL



**NOTE:**

FOR SECTIONS B-B AND C-C SEE SHEET 5