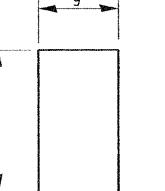
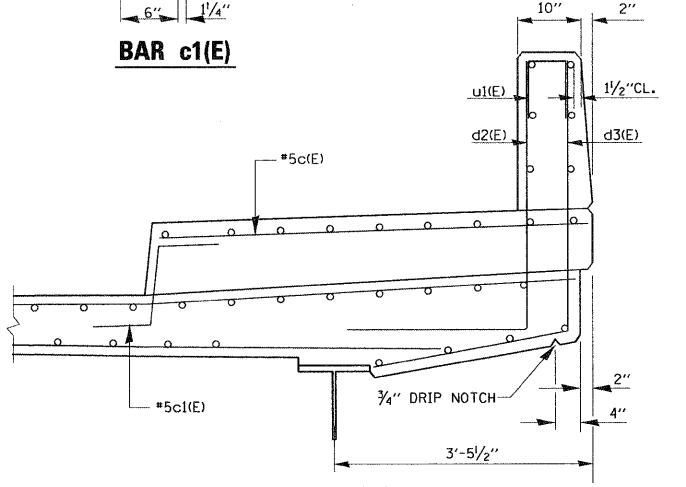
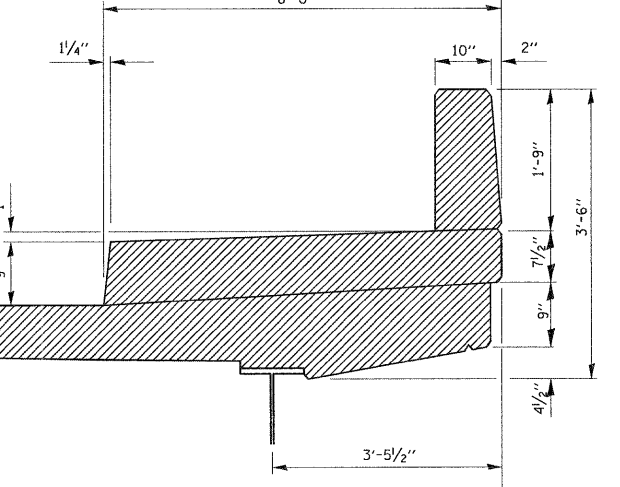
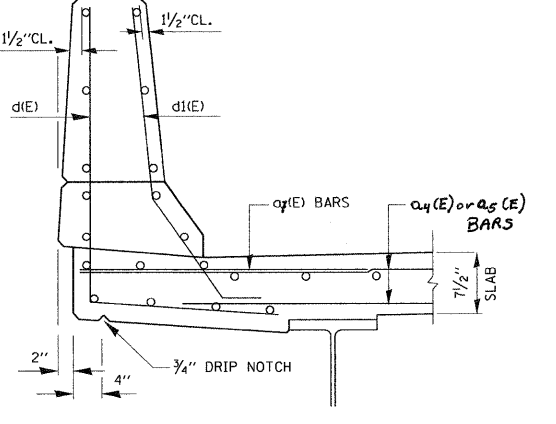
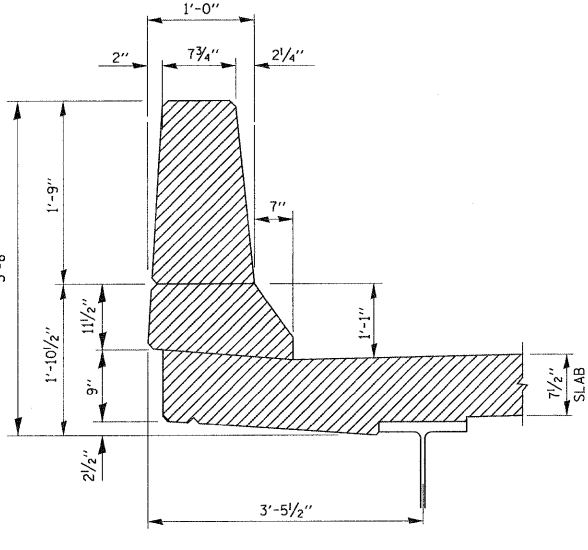
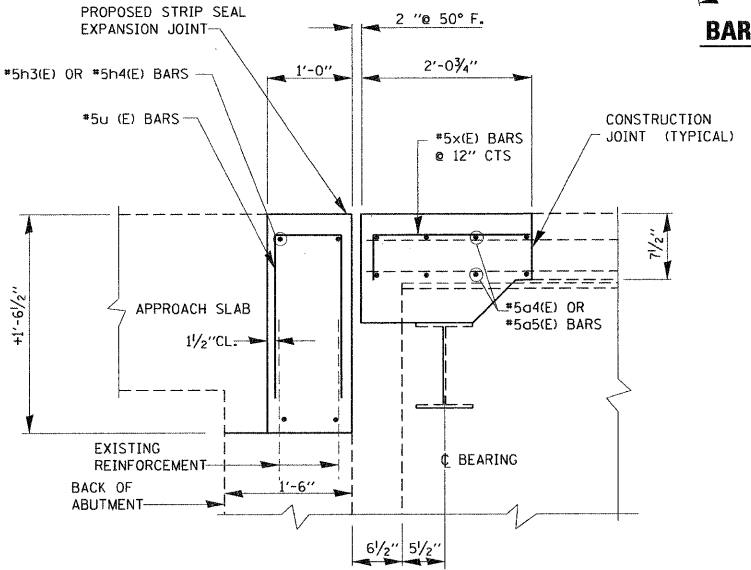
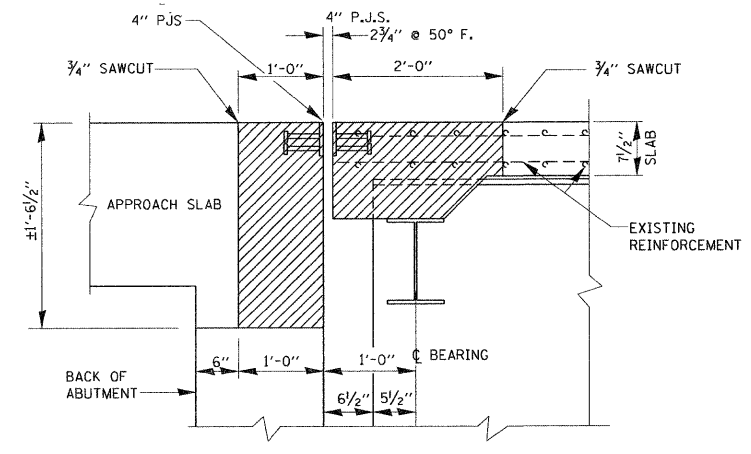
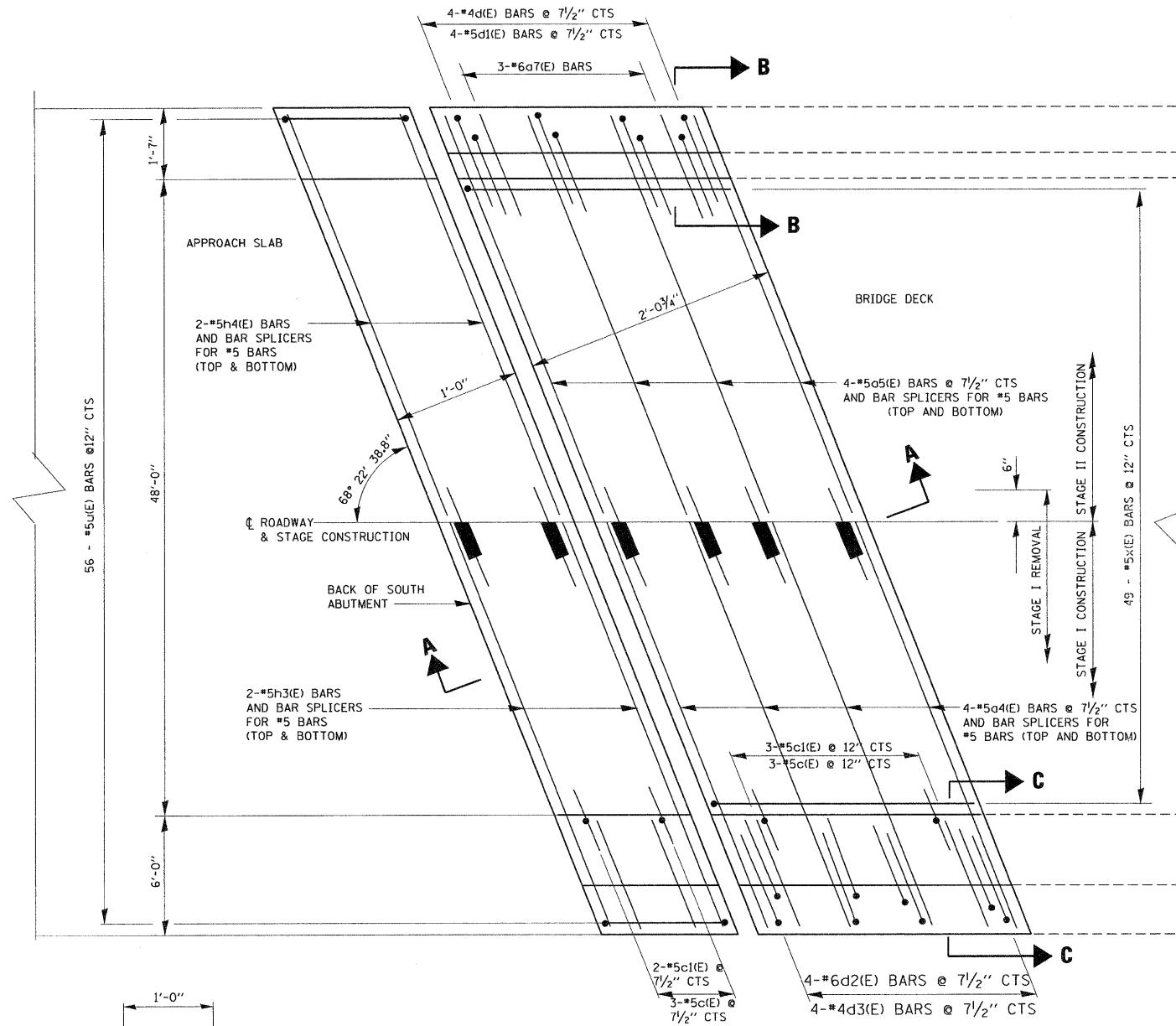


**BILL OF MATERIALS**

BAR	NO.	SIZE	LENGTH	SHAPE
a4(E)	8	#5	31'-9"	—
a5(E)	8	#5	27'-0"	—
a7(E)	3	#6	5'-0"	—
c(E)	6	#5	5'-9"	—
c1(E)	6	#4	2'-6"	┌
d(E)	4	#4	5'-9"	└
d1(E)	4	#5	3'-11"	┌
d2(E)	4	#6	3'-9"	└
d3(E)	4	#4	5'-6"	└
h3(E)	4	#5	32'-0"	—
h4(E)	4	#5	27'-3"	—
u(E)	56	#5	3'-7"	┌
u1(E)	4	#4	2'-1"	┌
x(E)	49	#5	2'-7"	└
REINFORCEMENT BARS (EPOXY COATED)			POUND	1230
CONCRETE REMOVAL			CU.YD.	8.0
CONCRETE SUPERSTRUCTURE			CU.YD.	8.0



**LEGEND:**

HATCHED AREA INDICATES CONCRETE REMOVAL

**NOTE:**

FOR BAR SPLICERS SEE SHEET NO. 17 OF 36