

STATE OF ILLINOIS
DEPARTMENT OF TRANSPORTATION
DIVISION OF HIGHWAYS

**PROPOSED
HIGHWAY PLANS**

FAU ROUTE 2722: 17TH AVENUE
MADISON AVENUE TO 22ND STREET
SECTION: 2010-160-RS
PROJECT: M-2722(001)
RESURFACING
COOK COUNTY
C-91-344-11

F.A. RTE.	SECTION	COUNTY	TOTAL SHEETS	SHEET NO.
2722	2010-160-RS	COOK	25	1
ILLINOIS		CONTRACT NO. 60N74		

*25+2=27

D-91-344-11

FOR INDEX OF SHEETS, SEE SHEET NO. 2

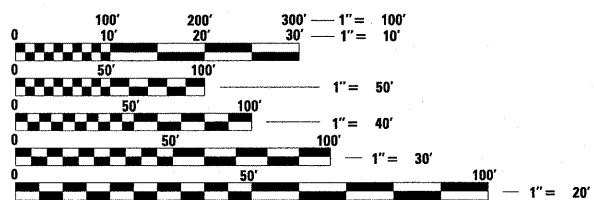
PROJECT IS LOCATED IN
THE VILLAGES OF
BROADVIEW & MAYWOOD



LOCATION OF SECTION INDICATED THUS: -



TRAFFIC DATA:
SPEED LIMIT = 30 - 35 MPH
2010 ADT = 10,100



FULL SIZE PLANS HAVE BEEN PREPARED USING STANDARD ENGINEERING SCALES. REDUCED SIZED PLANS WILL NOT CONFORM TO STANDARD SCALES. IN MAKING MEASUREMENTS ON REDUCED PLANS, THE ABOVE SCALES MAY BE USED.

J.U.L.I.E.
JOINT UTILITY LOCATION INFORMATION FOR EXCAVATION
1-800-892-0123
OR 811

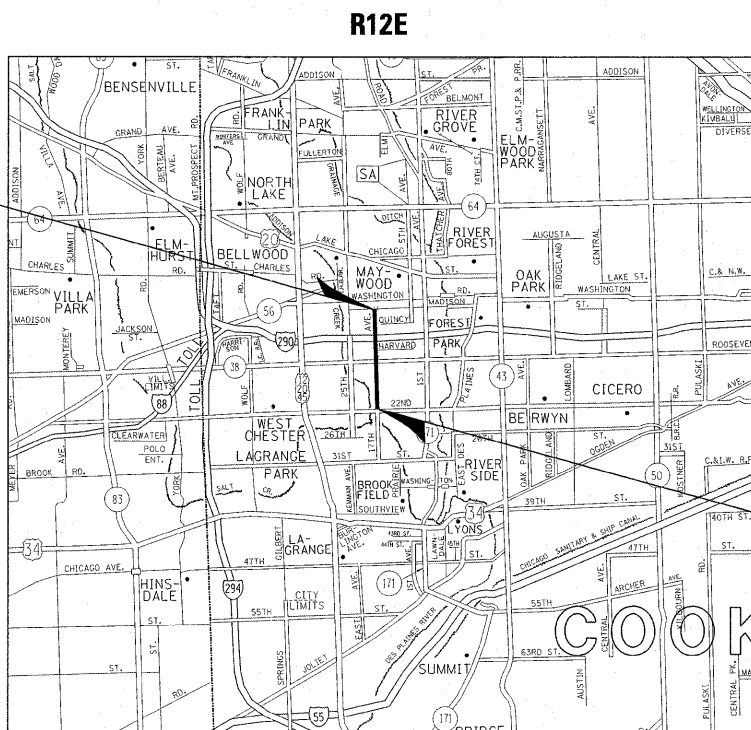
PROJECT ENGINEER: DAN WILGREEN (847) 705-4240
PROJECT MANAGER: KEN ENG

CONTRACT NO. 60N74

PROJECT ENDS:
STATION 116+15

OMISSIONS:
36+26 TO 36+51
61+66 TO 63+60
87+06 TO 89+65

PROJECT BEGINS:
STATION 10+47



GROSS LENGTH = 10568 FEET = 2.00 MILES
NET LENGTH = 10139 FEET = 1.92 MILES

STATE OF ILLINOIS
DEPARTMENT OF TRANSPORTATION
DIVISION OF HIGHWAYS

SUBMITTED MARCH 30, 2011

Diana M. O'Keefe
DEPUTY DIRECTOR OF HIGHWAYS, REGION ENGINEER

May 13 2011
Scott E. Stitt, P.E.
Acting ENGINEER OF DESIGN AND ENVIRONMENT

May 13 2011
Christine M. Reed
DIRECTOR OF HIGHWAYS, CHIEF ENGINEER

PRINTED BY THE AUTHORITY
OF THE STATE OF ILLINOIS

INDEX OF SHEETS

STATE STANDARDS

GENERAL NOTES

<u>SHEET NO.</u>	<u>DESCRIPTION</u>	<u>STANDARD NO.</u>	<u>DESCRIPTION</u>
1	TITLE SHEET	000001-06	TYPICAL SYMBOLS, ABBREVIATIONS AND PATTERNS
2	INDEX OF SHEETS, STATE STANDARDS & GENERAL NOTES	442201-03	CLASS C AND D PATCHES
3	SUMMARY OF QUANTITIES	606001-04	CONCRETE CURB AND COMBINATION CONCRETE CURB AND GUTTER
4-5	EXISTING AND PROPOSED TYPICAL SECTIONS	701427	LANE CLOSURE, MULTILANE, INTERMITTENT OR MOVING OPERATION, FOR SPEEDS < 40MPH
6-9	ROADWAY AND PAVEMENT MARKING PLANS	701501-06	URBAN LANE CLOSURE, 2L, 2W, UNDIVIDED
10-12B	DETECTOR LOOP REPLACEMENT PLANS	701606-07	URBAN LANE CLOSURE, MULTILANE, 2W WITH MOUNTABLE MEDIAN
13	DETAILS FOR FRAME AND LIDS ADJUSTMENT WITH MILLING	701701-07	URBAN LANE CLOSURE, MULTILANE INTERSECTION
14	PAVEMENT PATCHING FOR HMA SURFACED PAVEMENT	701901-01	TRAFFIC CONTROL DEVICES
15	CURB OR CURB AND GUTTER REMOVAL AND REPLACEMENT	886001-01	DETECTOR LOOP INSTALLATION
16	BUTT JOINT AND HMA TAPER DETAILS	886006-01	TYPICAL LAYOUT FOR DETECTION LOOPS
17	HMA TAPER AT EDGE OF PCC PAVEMENT		
18	TRAFFIC CONTROL AND PROTECTION FOR SIDE ROADS, INTERSECTIONS AND DRIVEWAYS		
19	TYPICAL APPLICATIONS: RAISED REFLECTIVE PAVEMENT MARKERS (SNOW-PLOW RESISTANT)		
20	DISTRICT ONE TYPICAL PAVEMENT MARKINGS		
21	TRAFFIC CONTROL AND PROTECTION OF TURN BAYS (TO REMAIN OPEN TO TRAFFIC)		
22	PAVEMENT MARKING LETTERS AND SYMBOLS FOR TRAFFIC STAGING		
23	ARTERIAL INFORMATION SIGNING		
24	DISTRICT ONE STANDARD TRAFFIC SIGNAL DESIGN DETAILS		
25	DISTRICT ONE DETECTOR LOOP INSTALLATION DETAILS FOR ROADWAY RESURFACING		

BEFORE STARTING ANY EXCAVATION, THE CONTRACTOR SHALL CALL "JULIE" AT (800) 892-0123 OR 811 FOR FIELD LOCATIONS OF BURIED ELECTRIC, TELEPHONE, AND GAS FACILITIES. (48 HOUR NOTIFICATION REQUIRED)

THE CONTRACTOR WILL NOT BE ABLE TO SET UP A YARD OR FIELD OFFICE ON STATE PROPERTY WITHOUT THE WRITTEN PERMISSION OF THE DEPARTMENT.

THE CONTRACTOR SHALL COORDINATE CONSTRUCTION ACTIVITIES WITH UTILITY COMPANIES AND THE VILLAGES OF BROADVIEW & MAYWOOD.

BUTT JOINTS WILL BE INSTALLED AT THE ENDS OF RESURFACING (WHERE RESURFACING MEETS EXISTING PAVEMENT) IN ACCORDANCE WITH THE "BUTT JOINT AND HMA TAPER DETAILS" SHEET INCLUDED IN THE PLANS UNLESS OTHERWISE SPECIFIED.

WHEN MILLED PAVEMENT IS OPEN TO TRAFFIC, THE MAXIMUM GRADE DIFFERENTIAL BETWEEN PASSES OF THE MILLING MACHINE SHALL NOT EXCEED 1/2 INCHES WHERE THE SPEED LIMIT IS 45 MPH OR LESS, AND 1 INCH WHERE THE SPEED LIMIT IS OVER 45 MPH. WITH WRITTEN APPROVAL FROM THE RESIDENT ENGINEER, A MAXIMUM GRADE DIFFERENTIAL OF 3 INCHES MAY BE ALLOWED IF THE EDGE OF THE MILLING IS SLOPED A MINIMUM OF 1:3 (V:H).

WHEN ARTIFICIAL LIGHTING IS UTILIZED IN NIGHT OPERATIONS, THE CONTRACTOR SHALL EXERCISE THE UTMOST PRECAUTIONS IN PREVENTING ADVERSE VISABILITY TO THE MOTORING PUBLIC AND ADJOINING RESIDENTIAL AREAS.

ALL PAVEMENT PATCHING LOCATIONS WILL BE DETERMINED IN THE FIELD BY THE ENGINEER.

BEFORE BEGINNING ANY WORK, THE CONTRACTOR SHALL RETAIN AND RECORD FOR FUTURE REFERENCE, ALL EXISTING PAVEMENT MARKING LINES (AND RAISED REFLECTIVE PAVEMENT MARKERS) IN ORDER THAT THESE LOCATIONS CAN BE RE-ESTABLISHED FOR STRIPING. EXACT LOCATIONS OF ALL PAVEMENT MARKINGS SHALL BE AS DIRECTED BY THE ENGINEER.

DOUBLE LANE MARKERS ARE TO BE USED AS SHOWN ON THE DISTRICT ONE DETAIL "TYPICAL APPLICATIONS - RAISED REFLECTIVE PAVEMENT MARKERS (SNOW-PLOW RESISTANT)" SHOWN IN THE PLANS.

THE RESIDENT ENGINEER SHALL CONTACT MR. WALLY CZARNY, AREA TRAFFIC FIELD ENGINEER, AT (847) 715-8419 A MINIMUM OF 2 WEEKS PRIOR TO PLACEMENT OF FINAL PAVEMENT MARKINGS.

THE RESIDENT ENGINEER SHALL CONTACT THE TRAFFIC CONTROL SUPERVISOR AT (847) 705-4470 A MINIMUM OF 72 HOURS PRIOR TO THE INSTALLATION OF ANY TEMPORARY TRAFFIC CONTROL DEVICES.

Rev. 6-6-11

FILE NAME =	USER NAME = basknm	DESIGNED -	REVISED -	STATE OF ILLINOIS DEPARTMENT OF TRANSPORTATION	17TH AVE. (MADISON AVE - 22ND STREET) INDEX OF SHEETS, STATE STANDARDS & GENERAL NOTES	F.A. RTE.	SECTION	COUNTY	TOTAL SHEETS	SHEET NO.	
c:\pw_work\pw\dot\basknm\d0251949\0134	11-sht-plan.dgn	DRAWN -	REVISED -			2722	2010-160-RS	COOK	25	2	
	PLOT SCALE = 50.0000 1/4 IN.	CHECKED -	REVISED -			CONTRACT NO. 60N74					
	PLOT DATE = 3/29/2011	DATE -	REVISED -			FED. ROAD DIST. NO. 1 ILLINOIS FED. AID PROJECT					
					SCALE: NONE	SHEET NO. 2 OF 25 SHEETS		STA. 10+47 TO STA. 116+15			

SUMMARY OF QUANTITIES				URBAN 80% FED - 20% STATE					CONSTRUCTION TYPE CODE					SUMMARY OF QUANTITIES				URBAN 80% FED - 20% STATE					CONSTRUCTION TYPE CODE													
CODE NO	ITEM	UNIT	TOTAL QUANTITIES										CODE NO	ITEM	UNIT	TOTAL QUANTITIES																				
				0005													0005																			
21101615	TOPSOIL FURNISH AND PLACE, 4"	SO YD	275	275									70300240	TEMPORARY PAVEMENT MARKING - LINE 6"	FOOT	4191	4191																			
25200110	SODDING, SALT TOLERANT	SO YD	275	275									70300260	TEMPORARY PAVEMENT MARKING - LINE 12"	FOOT	685	685																			
40600200	BITUMINOUS MATERIALS (PRIME COAT)	TON	41	41									70300280	TEMPORARY PAVEMENT MARKING - LINE 24"	FOOT	642	642																			
40600300	AGGREGATE (PRIME COAT)	TON	203	203									70301000	WORK ZONE PAVEMENT MARKING REMOVAL	SO FT	972	972																			
40600400	MIXTURE FOR CRACKS, JOINTS, AND FLANGEWAYS	TON	76	76									* 78000100	THERMOPLASTIC PAVEMENT MARKING - LETTERS AND SYMBOLS	SO FT	554	554																			
40600895	CONSTRUCTING TEST STRIP	EACH	1	1									* 78000200	THERMOPLASTIC PAVEMENT MARKING - LINE 4"	FOOT	18761	18761																			
40600982	HOT-MIX ASPHALT SURFACE REMOVAL - BUTT JOINT	SO YD	613	613									* 78000400	THERMOPLASTIC PAVEMENT MARKING - LINE 6"	FOOT	4191	4191																			
40600985	PORTLAND CEMENT CONCRETE SURFACE REMOVAL - BUTT JOINT	SO YD	460	460									* 78000600	THERMOPLASTIC PAVEMENT MARKING - LINE 12"	FOOT	685	685																			
40601005	HOT-MIX ASPHALT REPLACEMENT OVER PATCHES	TON	619	619									* 78000650	THERMOPLASTIC PAVEMENT MARKING - LINE 24"	FOOT	642	642																			
40603340	HOT-MIX ASPHALT SURFACE COURSE, MIX "D", N70	TON	4257	4257									* 78100100	RAISED REFLECTIVE PAVEMENT MARKER	EACH	384	384																			
42001300	PROTECTIVE COAT	SO YD	733	733									78300200	RAISED REFLECTIVE PAVEMENT MARKER REMOVAL	EACH	346	346																			
42400200	PORTLAND CEMENT CONCRETE SIDEWALK 5 INCH	SO FT	825	825									* 88600600	DETECTOR LOOP REPLACEMENT	FOOT	2091	2091																			
44000158	HOT-MIX ASPHALT SURFACE REMOVAL, 2 1/4"	SO YD	50683	50683									X4060826	POLYMERIZED LEVELING BINDER (MACHINE METHOD), 1L-4.75, N50	TON	2091	2091																			
44000600	SIDEWALK REMOVAL	SO FT	825	825									X4400100	PORTLAND CEMENT CONCRETE SURFACE REMOVAL (VARIABLE DEPTH)	SO YD	328	328																			
44002212	HOT-MIX ASPHALT REMOVAL OVER PATCHES, 3"	SO YD	3682	3682									X6030310	FRAMES AND LIDS TO BE ADJUSTED (SPECIAL)	EACH	55	55																			
44201729	CLASS D PATCHES, TYPE II, 7 INCH	SO YD	896	896									Z0004562	COMBINATION CONCRETE CURB AND GUTTER REMOVAL AND REPLACEMENT	FOOT	2200	2200																			
44201733	CLASS D PATCHES, TYPE III, 7 INCH	SO YD	903	903									△ Z0018500	DRAINAGE STRUCTURES TO BE CLEANED	EACH	25	25																			
44201735	CLASS D PATCHES, TYPE IV, 7 INCH	SO YD	1331	1331									Z0030850	TEMPORARY INFORMATION SIGNING	SO FT	51.4	51.4																			
60257900	MANHOLES TO BE RECONSTRUCTED	EACH	4	4									Z0048665	RAILROAD PROTECTIVE LIABILITY INSURANCE	L SUM	1	1																			
60266600	VALVE BOXES TO BE ADJUSTED	EACH	4	4																																
60300305	FRAMES AND LIDS TO BE ADJUSTED	EACH	10	10																																
67000400	ENGINEER'S FIELD OFFICE, TYPE A	CAL MO	6	6																																
67100100	MOBILIZATION	L SUM	1	1																																
70102620	TRAFFIC CONTROL AND PROTECTION, STANDARD 701501	L SUM	1	1																																
70102625	TRAFFIC CONTROL AND PROTECTION, STANDARD 701606	L SUM	1	1																																
70102635	TRAFFIC CONTROL AND PROTECTION, STANDARD 701701	L SUM	1	1																																
70300100	SHORT TERM PAVEMENT MARKING	FOOT	8751	8751																																
70300210	TEMPORARY PAVEMENT MARKING LETTERS AND SYMBOLS	SO FT	554	554																																
70300220	TEMPORARY PAVEMENT MARKING - LINE 4"	FOOT	18761	18761																																

2020 2020

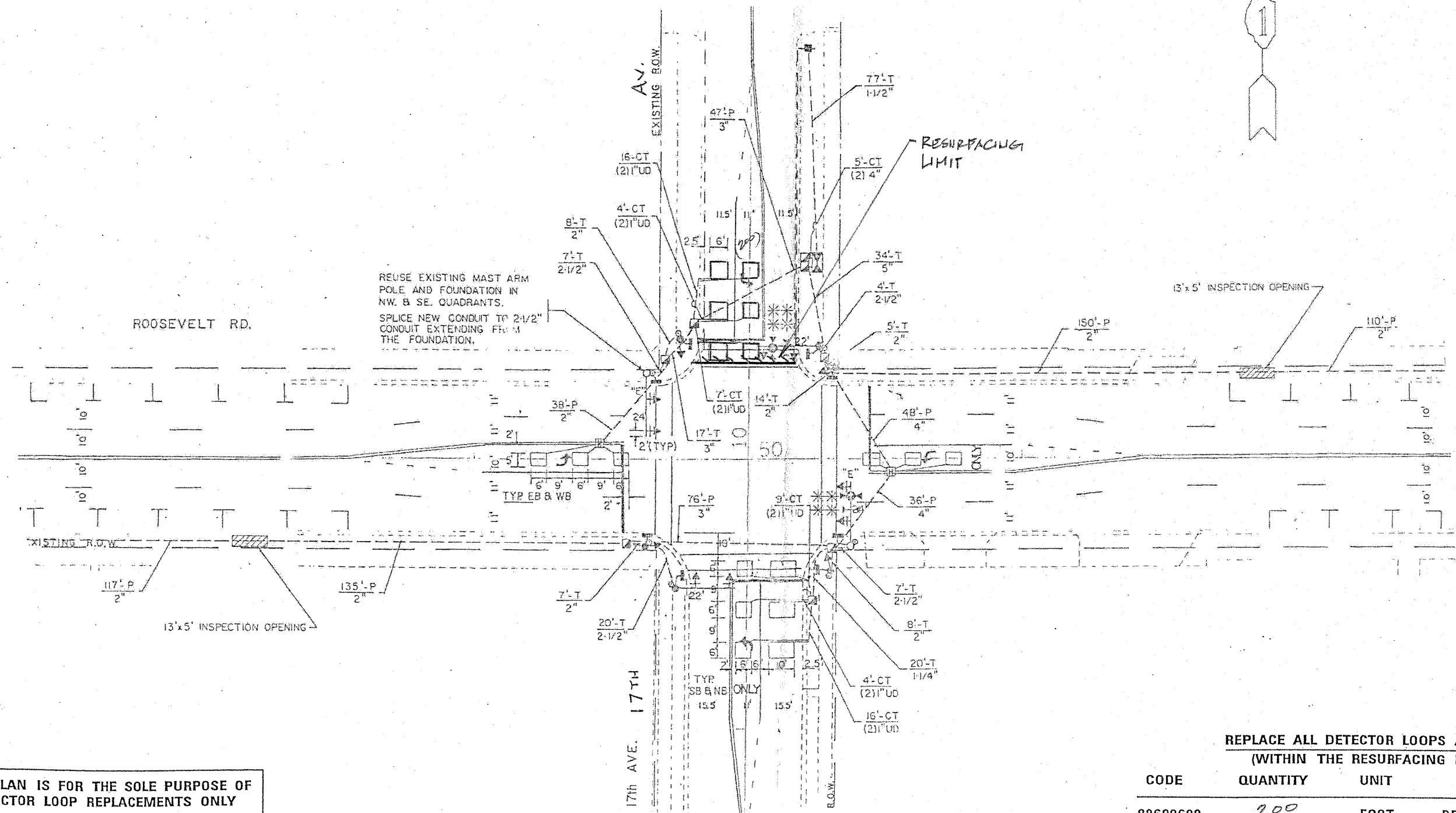
△ NON-PARTICIPATING (100% STATE)
* SPECIALTY ITEMS

Rev. 6-6-11

WORK SHALL MEET THE REQUIREMENTS OF THE SPECIAL PROVISION, "TRAFFIC SIGNAL SPECIFICATIONS FOR DETECTOR LOOP REPLACEMENT AND/OR INSTALLATION ON ROADWAY GRINDING, RESURFACING AND PATCHING OPERATIONS". SPECIAL ATTENTION MUST BE MADE TO THE SECTIONS "INSPECTION OF CONSTRUCTION" AND "DETECTOR LOOP REPLACEMENT" FOR INSTALLATION AND INSPECTION REQUIREMENTS. LOOP REPLACEMENT WORK THAT DOES NOT MEET THE CONTRACT REQUIREMENTS SHALL NOT BE PAID. WORK NECESSARY TO COMPLETE THE LOOP REPLACEMENT WORK MAY BE ASSIGNED BY THE ENGINEER TO IDOT'S ELECTRICAL MAINTENANCE CONTRACTOR (EMC); ALL RELATED COSTS WILL BE THE RESPONSIBILITY OF THE CONTRACTOR.

TRAFFIC SIGNAL LEGEND

PROPOSED	EXISTING
SIGNAL HEAD WITH BACKPLATE	
SIGNAL HEAD	
GALVANIZED STEEL CONDUIT IN TRENCH OR PUSHED	
DETECTOR LOOP	
VEHICLE DETECTOR, NON COMPENSATED MAGNETIC TYPE	
RAILWAY FOR MAGNETIC DETECTOR, TYPE I OR TYPE II	



REUSE EXISTING MAST ARM POLE AND FOUNDATION IN NW & SE QUADRANTS. SPLICE NEW CONDUIT TO 2 1/2" CONDUIT EXTENDING FROM THE FOUNDATION.

THIS PLAN IS FOR THE SOLE PURPOSE OF DETECTOR LOOP REPLACEMENTS ONLY

REPLACE ALL DETECTOR LOOPS AS SHOWN (WITHIN THE RESURFACING LIMITS)

CODE	QUANTITY	UNIT	ITEM
88600600	200	FOOT	DETECTOR LOOP, REPLACEMENT

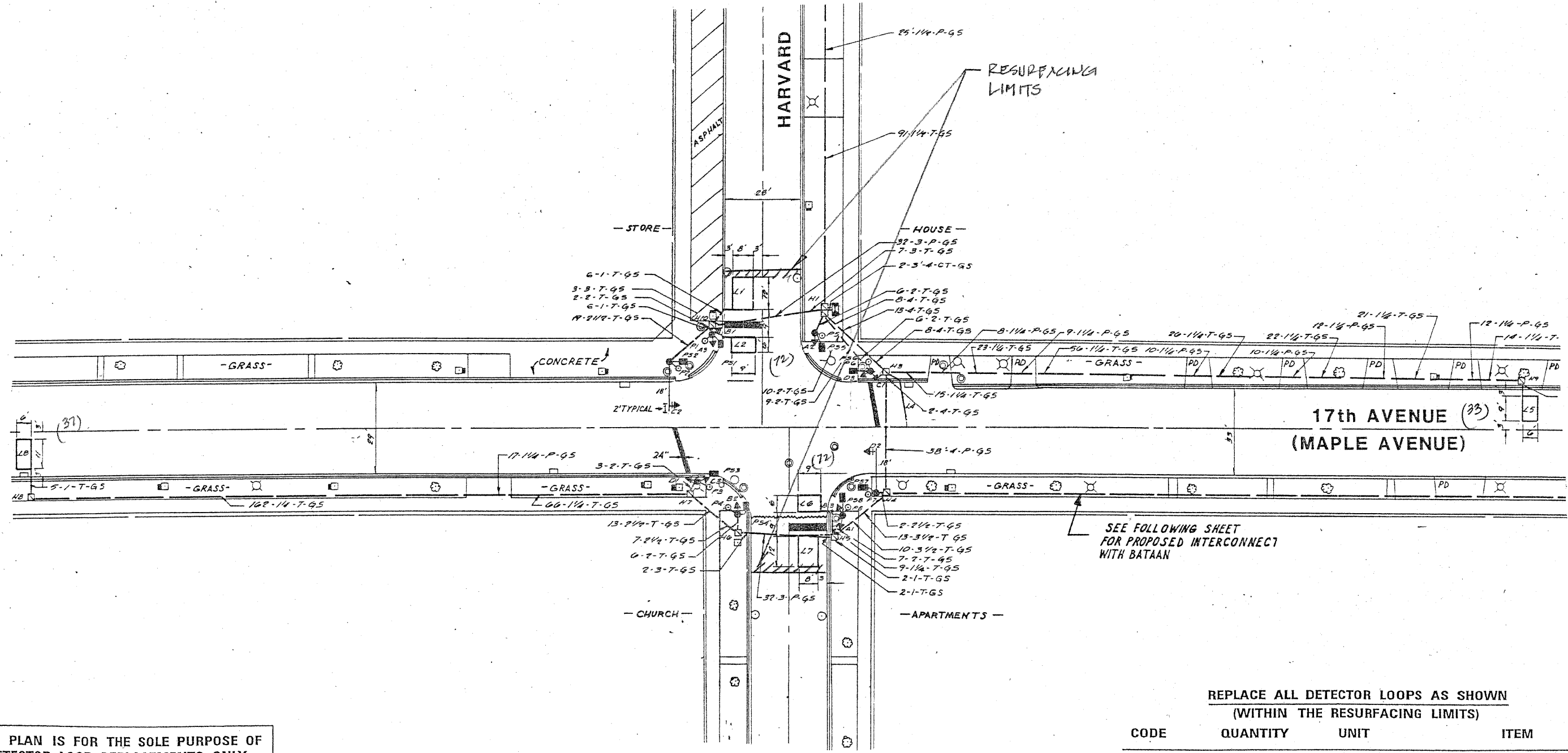
Rev. Sheet 6-7-11

FILE NAME = c:\p\work\pvidot\nguyenm\20112618\11eser.dgn	USER NAME = nguyenm	DESIGNED -	REVISED - MB-5/19/11	STATE OF ILLINOIS DEPARTMENT OF TRANSPORTATION	DISTRICT ONE - DETECTOR LOOP REPLACEMENT 17TH AV. @ ROOSEVELT ROAD	F.A. RTE. 2722	SECTION 2010-160-B5	COUNTY COOK	TOTAL SHEETS 25	SHEET NO. 10
PLOT SCALE = 100.0000 1/16 IN.	CHECKED -	REVISOR -	SCALE: SHEET NO. 10 OF 25 SHEETS			STA. 10+47	TO STA. 116+15	FED. ROAD DIST. NO.	ILLINOIS FED. AID PROJECT	CONTRACT NO. 60N74
PLOT DATE = 12/1/2010	DATE -	REVISOR -								

WORK SHALL MEET THE REQUIREMENTS OF THE SPECIAL PROVISION, "TRAFFIC SIGNAL SPECIFICATIONS FOR DETECTOR LOOP REPLACEMENT AND/OR INSTALLATION ON ROADWAY GRINDING, RESURFACING AND PATCHING OPERATIONS". SPECIAL ATTENTION MUST BE MADE TO THE SECTIONS "INSPECTION OF CONSTRUCTION" AND "DETECTOR LOOP REPLACEMENT" FOR INSTALLATION AND INSPECTION REQUIREMENTS. LOOP REPLACEMENT WORK THAT DOES NOT MEET THE CONTRACT REQUIREMENTS SHALL NOT BE PAID. WORK NECESSARY TO COMPLETE THE LOOP REPLACEMENT WORK MAY BE ASSIGNED BY THE ENGINEER TO IDOT'S ELECTRICAL MAINTENANCE CONTRACTOR (EMC); ALL RELATED COSTS WILL BE THE RESPONSIBILITY OF THE CONTRACTOR.

TRAFFIC SIGNAL LEGEND

PROPOSED	EXISTING
SIGNAL HEAD WITH BACKPLATE	→
SIGNAL HEAD	→
GALVANIZED STEEL CONDUIT IN TRENCH OR PUSHED	—
DETECTOR LOOP	□
VEHICLE DETECTOR, NON COMPENSATED MAGNETIC TYPE	□
RACEWAY FOR MAGNETIC DETECTOR, TYPE I OR TYPE II	— "E"



SEE FOLLOWING SHEET FOR PROPOSED INTERCONNECT WITH BATAAN

REPLACE ALL DETECTOR LOOPS AS SHOWN (WITHIN THE RESURFACING LIMITS)

CODE	QUANTITY	UNIT	ITEM
88600600	214	FOOT	DETECTOR LOOP, REPLACEMENT

Rev. Sheet 6-7-11

THIS PLAN IS FOR THE SOLE PURPOSE OF DETECTOR LOOP REPLACEMENTS ONLY

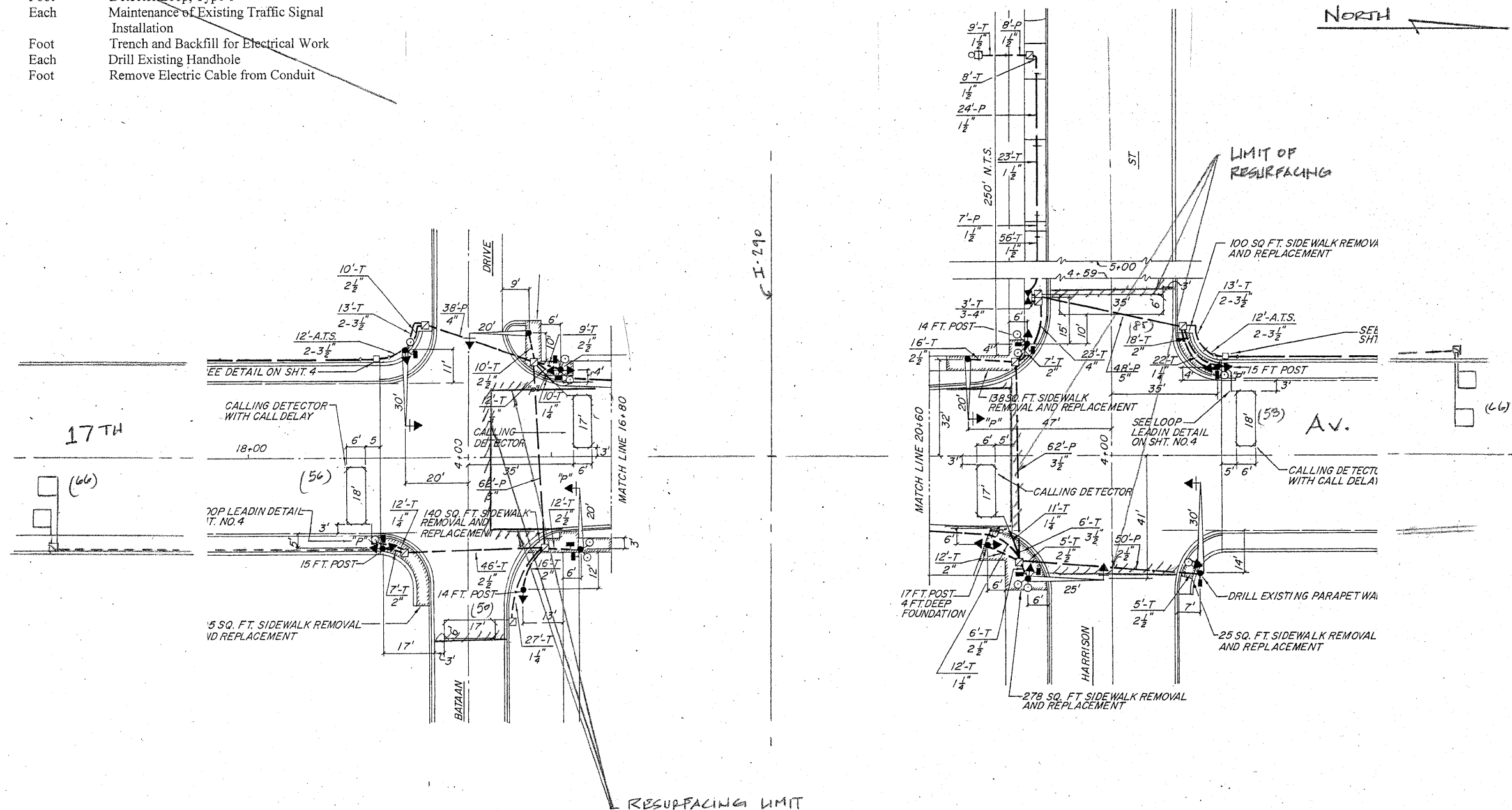
FILE NAME =	USER NAME = nguyensm	DESIGNED -	REVISED - MB - 5/19/11	STATE OF ILLINOIS DEPARTMENT OF TRANSPORTATION	DISTRICT ONE - DETECTOR LOOP REPLACEMENT 17TH AV. @ HARVARD ST.	SCALE: SHEET NO. 11 OF 25 SHEETS STA. 10+47 TO STA. 116+15'	F.A. RTE.	SECTION	COUNTY	TOTAL SHEETS	SHEET NO.
ca:\pwork\pwork\nguyensm\08112618\11esher.dgn	PLOT SCALE = 100.0000' / IN.	DRAWN -	REVISED -				2722	2010-160-R5	COOK	25	11
PLOT DATE = 12/1/2010	DATE -	CHECKED -	REVISED -				CONTRACT NO. 60N74				
		DATE -	REVISED -				FED. ROAD DIST. NO.	ILLINOIS FED. AID PROJECT			

TRAFFIC SIGNAL LEGEND

	PROPOSED	EXISTING
SIGNAL HEAD WITH BACKPLATE		
SIGNAL HEAD		
CALVANIZED STEEL CONDUIT IN TRENCH OR PUSHED		
DETECTOR LOOP		
VEHICLE DETECTOR, NON COMPENSATED MAGNETIC TYPE		
RACEWAY FOR MAGNETIC DETECTOR, TYPE I OR TYPE II		

**SCHEDULE OF QUANTITIES
MAGNETIC DETECTOR AND LOOP DETECTOR REPLACEMENT**

Code No.	Quantity	Unit	Pay Item
87301305		Foot	Electric Cable in Conduit, Lead-in No. 14 1-Pair
88500100		Each	Inductive Loop Detector
88600100		Foot	Detector Loop, Type 1
85000200		Each	Maintenance of Existing Traffic Signal Installation
81900200		Foot	Trench and Backfill for Electrical Work
87900200		Each	Drill Existing Handhole
89502300		Foot	Remove Electric Cable from Conduit



**THIS PLAN IS FOR THE SOLE PURPOSE OF
DETECTOR LOOP REPLACEMENTS ONLY**

**REPLACE ALL DETECTOR LOOPS AS SHOWN
(WITHIN THE RESURFACING LIMITS)**

CODE	QUANTITY	UNIT	ITEM
88600600	370	FOOT	DETECTOR LOOP, REPLACEMENT

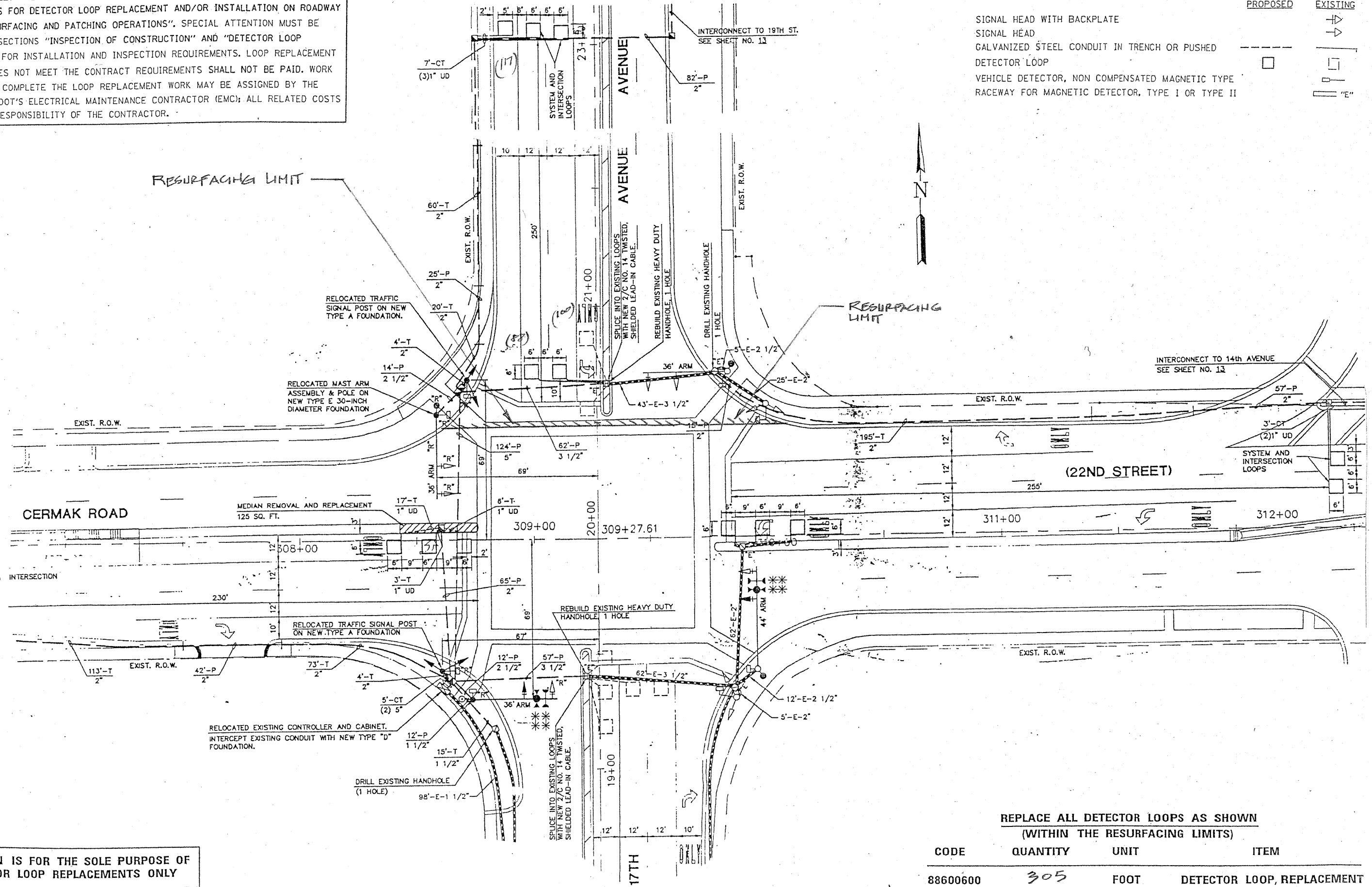
Rev. Sheet 6-7-11

FILE NAME =	USER NAME = nguyensm	DESIGNED -	REVISED - MB-5/19/11	STATE OF ILLINOIS DEPARTMENT OF TRANSPORTATION	DISTRICT ONE - DETECTOR LOOP REPLACEMENT 17TH AV. @ I-290 - BATAAN/HARRISON	F.A. RTE.	SECTION	COUNTY	TOTAL SHEETS	SHEET NO.	
ca:\p\work\p\ridot\nguyensm\201125181\F101111.dgn		DRAWN -	REVISED -			2722	2010-160-RS	COOK	25	12	
PLOT SCALE = 100.0000' / IN.		CHECKED -	REVISED -			CONTRACT NO. 60N74					
PLOT DATE = 12/1/2010		DATE -	REVISED -			FED. ROAD DIST. NO. ILLINOIS FED. AID PROJECT					

WORK SHALL MEET THE REQUIREMENTS OF THE SPECIAL PROVISION, "TRAFFIC SIGNAL SPECIFICATIONS FOR DETECTOR LOOP REPLACEMENT AND/OR INSTALLATION ON ROADWAY GRINDING, RESURFACING AND PATCHING OPERATIONS". SPECIAL ATTENTION MUST BE MADE TO THE SECTIONS "INSPECTION OF CONSTRUCTION" AND "DETECTOR LOOP REPLACEMENT" FOR INSTALLATION AND INSPECTION REQUIREMENTS. LOOP REPLACEMENT WORK THAT DOES NOT MEET THE CONTRACT REQUIREMENTS SHALL NOT BE PAID. WORK NECESSARY TO COMPLETE THE LOOP REPLACEMENT WORK MAY BE ASSIGNED BY THE ENGINEER TO IDOT'S ELECTRICAL MAINTENANCE CONTRACTOR (EMC); ALL RELATED COSTS WILL BE THE RESPONSIBILITY OF THE CONTRACTOR.

TRAFFIC SIGNAL LEGEND

PROPOSED	EXISTING
SIGNAL HEAD WITH BACKPLATE	
SIGNAL HEAD	
GALVANIZED STEEL CONDUIT IN TRENCH OR PUSHED	
DETECTOR LOOP	
VEHICLE DETECTOR, NON COMPENSATED MAGNETIC TYPE	
RACEWAY FOR MAGNETIC DETECTOR, TYPE I OR TYPE II	



THIS PLAN IS FOR THE SOLE PURPOSE OF DETECTOR LOOP REPLACEMENTS ONLY

REPLACE ALL DETECTOR LOOPS AS SHOWN (WITHIN THE RESURFACING LIMITS)

CODE	QUANTITY	UNIT	ITEM
88600600	305	FOOT	DETECTOR LOOP, REPLACEMENT

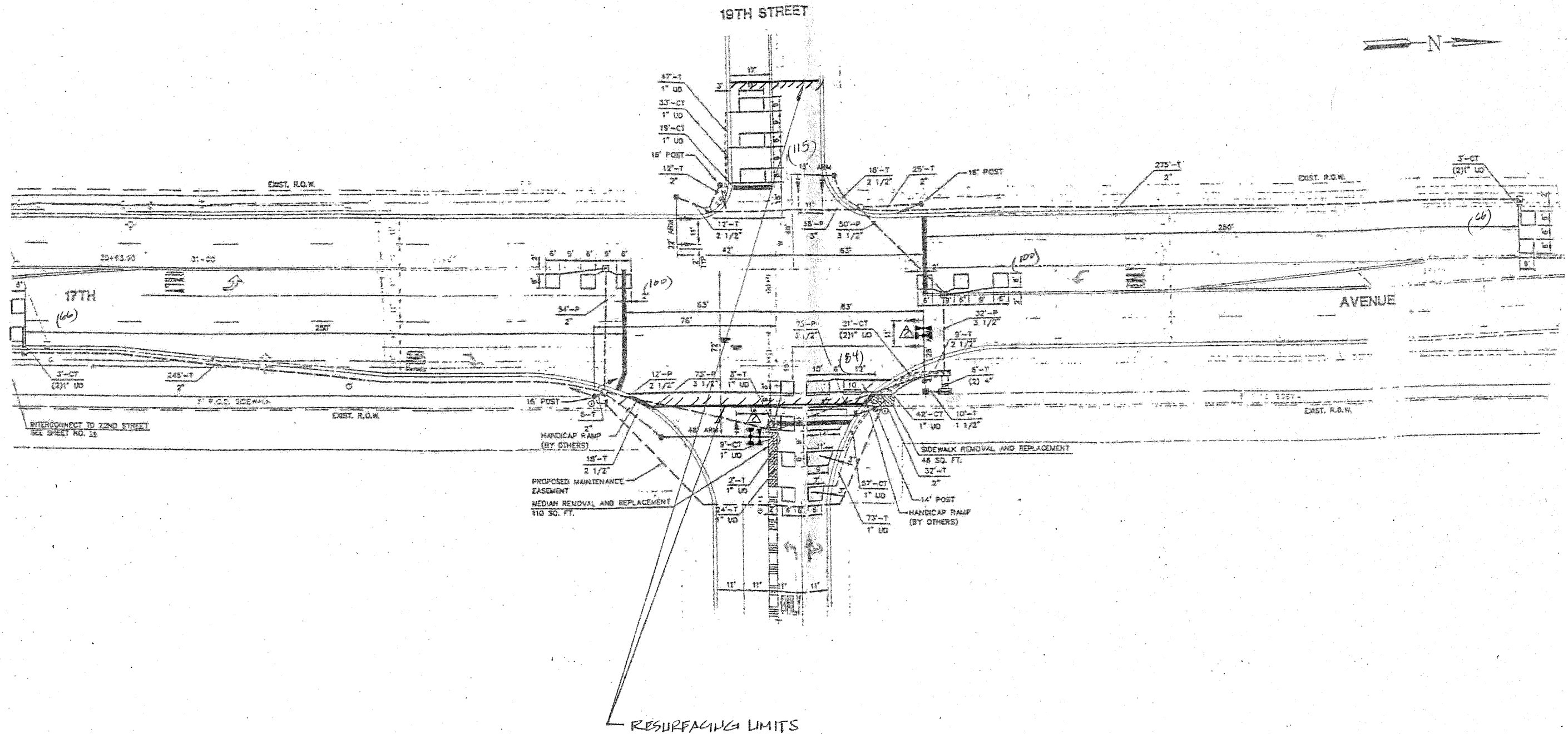
Rev. Sheet 6-7-11

FILE NAME *	USER NAME *	DESIGNED -	REVISED -	STATE OF ILLINOIS DEPARTMENT OF TRANSPORTATION	DISTRICT ONE - DETECTOR LOOP REPLACEMENT 17TH AV. @ CERMAK RD. (22ND ST.)	F.A. RTE.	SECTION	COUNTY	TOTAL SHEETS	SHEET NO.
c:\pwork\pwork\nguyen\08112618\F10101.dgn	nguyen	DRAWN -	REVISED -			2722	2010-160-RS	COOK	25	12A
PLOT SCALE = 100.0000' / IN.	CHECKED -	REVISED -	REVISED -			CONTRACT NO. 60N74				
PLOT DATE = 12/1/2010	DATE -	REVISED -	REVISED -			SCALE: SHEET NO. 12A OF 25 SHEETS STA. 10+47 TO STA. 116+15 FED. ROAD DIST. NO. ILLINOIS FED. AID PROJECT				

WORK SHALL MEET THE REQUIREMENTS OF THE SPECIAL PROVISION, "TRAFFIC SIGNAL SPECIFICATIONS FOR DETECTOR LOOP REPLACEMENT AND/OR INSTALLATION ON ROADWAY GRINDING, RESURFACING AND PATCHING OPERATIONS". SPECIAL ATTENTION MUST BE MADE TO THE SECTIONS "INSPECTION OF CONSTRUCTION" AND "DETECTOR LOOP REPLACEMENT" FOR INSTALLATION AND INSPECTION REQUIREMENTS. LOOP REPLACEMENT WORK THAT DOES NOT MEET THE CONTRACT REQUIREMENTS SHALL NOT BE PAID. WORK NECESSARY TO COMPLETE THE LOOP REPLACEMENT WORK MAY BE ASSIGNED BY THE ENGINEER TO IDOT'S ELECTRICAL MAINTENANCE CONTRACTOR (EMC); ALL RELATED COSTS WILL BE THE RESPONSIBILITY OF THE CONTRACTOR.

TRAFFIC SIGNAL LEGEND

	PROPOSED	EXISTING
SIGNAL HEAD WITH BACKPLATE		
SIGNAL HEAD		
GALVANIZED STEEL CONDUIT IN TRENCH OR PUSHED		
DETECTOR LOOP		
VEHICLE DETECTOR, NON COMPENSATED MAGNETIC TYPE		
RACEWAY FOR MAGNETIC DETECTOR, TYPE I OR TYPE II		



THIS PLAN IS FOR THE SOLE PURPOSE OF DETECTOR LOOP REPLACEMENTS ONLY

REPLACE ALL DETECTOR LOOPS AS SHOWN (WITHIN THE RESURFACING LIMITS)

CODE	QUANTITY	UNIT	ITEM
88600600	531	FOOT	DETECTOR LOOP, REPLACEMENT

Rev. Sheet 6-7-11

FILE NAME =	USER NAME = nguyensm	DESIGNED -	REVISED - MB - 5/17/11	STATE OF ILLINOIS DEPARTMENT OF TRANSPORTATION	DISTRICT ONE - DETECTOR LOOP REPLACEMENT 17TH AV. @ 19TH STREET	F.A. RTE.	SECTION	COUNTY	TOTAL SHEETS	SHEET NO.
ct:\p\work\pwidot\nguyensm\c0112618\11\asr.dgn		DRAWN -	REVISED -			2722	2010-160-R5	COOK	25	12B
PLOT SCALE = 100.0000' / IN.		CHECKED -	REVISED -			SCALE: SHEET NO. 12B OF 25 SHEETS STA. 10+47 TO STA. 116+15		CONTRACT NO. 60N74		
PLOT DATE = 12/1/2010		DATE -	REVISED -			FED. ROAD DIST. NO. ILLINOIS FED. AID PROJECT				