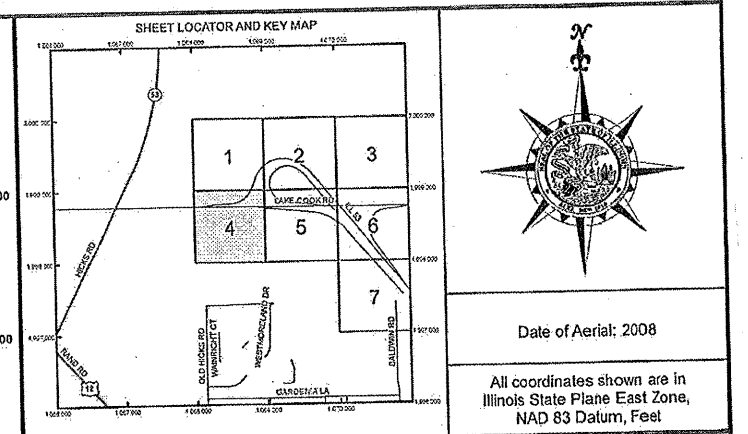
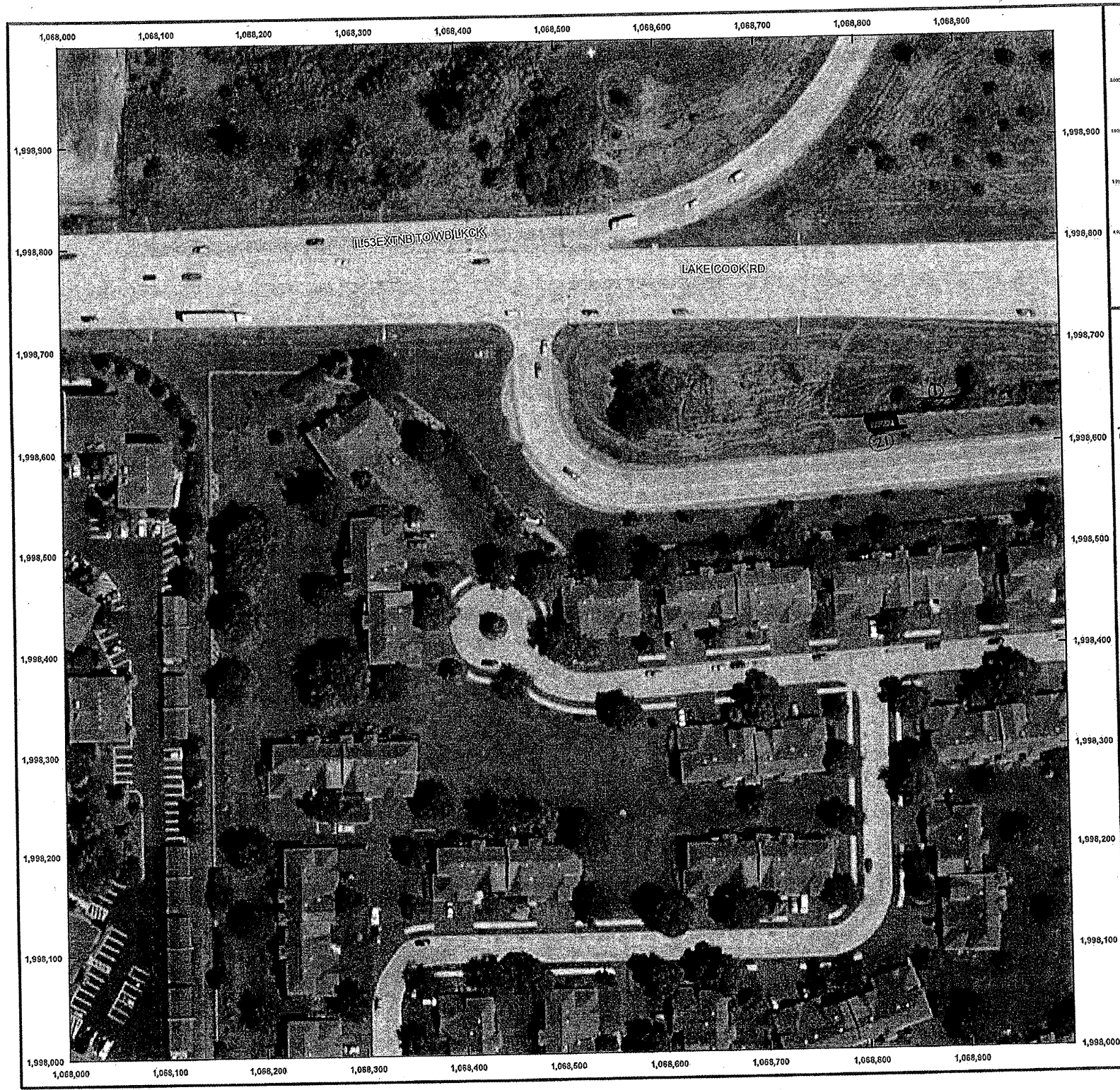


ROUTE	SECTION	COUNTY	TOTAL SHEETS	SHEET NUMBER
FAP 342/	2011-026-I	COOK & LAKE	71	61

CONTRACT NO. 60P26



(SB) East side wall selective clearing:
 ① 39' x 3'
 (SB) West side wall - selective clearing:
 ② 4' x 4'
 (SB) East side wall - Tree Removal:
 4.5
 3.3
 3.1

ILLINOIS DEPARTMENT OF
 TRANSPORTATION
 ILL RTE 53
 SELECTIVE CLEARING & TREE
 REMOVAL
 SHEET 1 OF 9