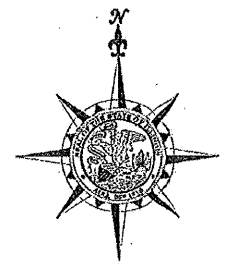
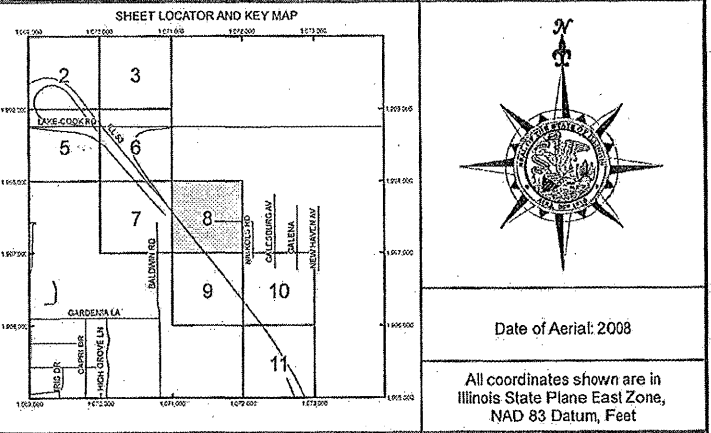
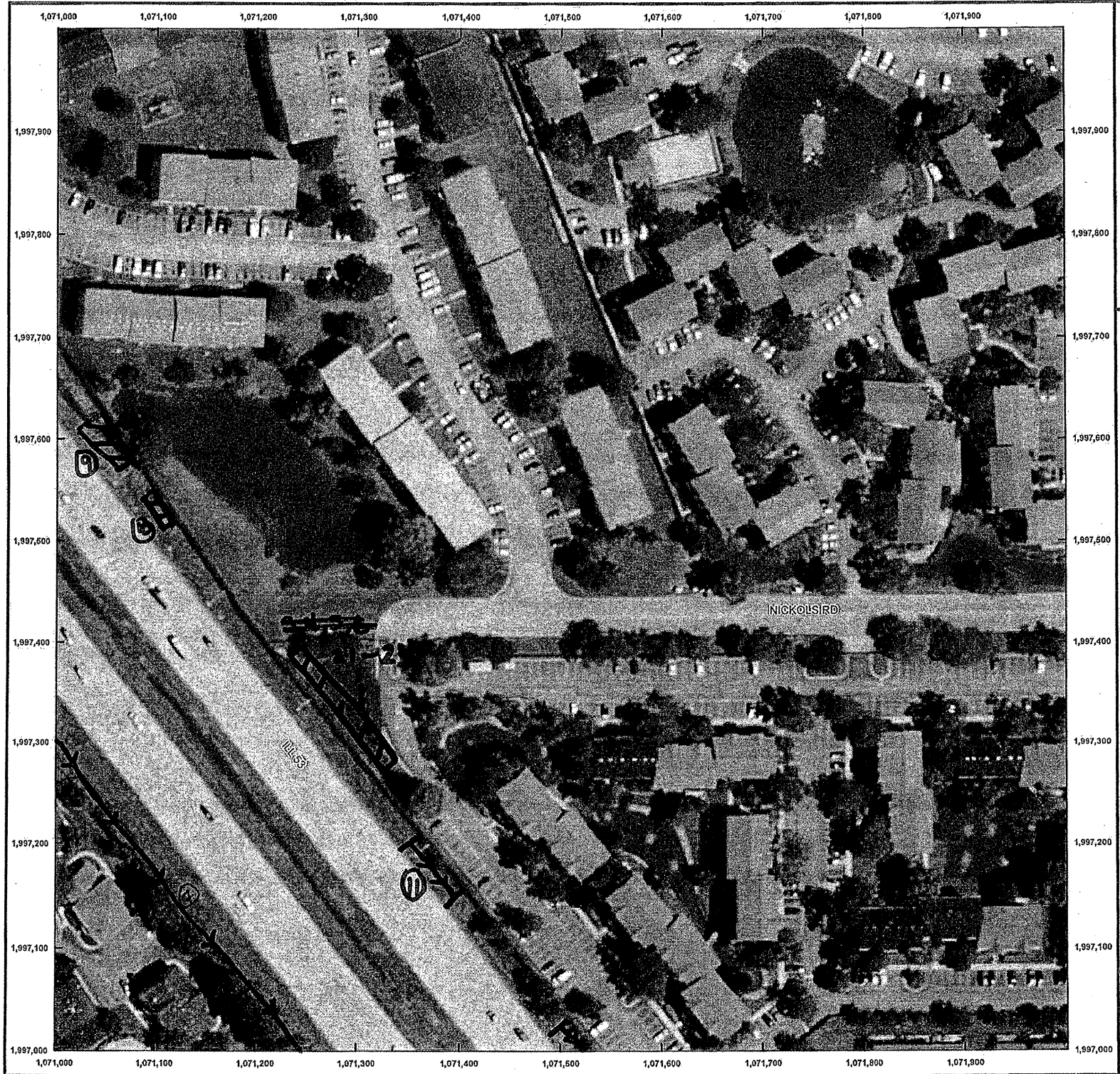


ROUTE	SECTION	COUNTY	TOTAL SHEETS	SHEET NUMBER
FAP 342	2011-026-1	COOK & LAKE	71	65

CONTRACT NO. 60P26



Date of Aerial: 2008
 All coordinates shown are in Illinois State Plane East Zone, NAD 83 Datum, Feet

- (SB) West side wall - Tree Removal
- | | |
|-----|------|
| 2.7 | 2.16 |
| 3.2 | 3.5 |
| 1 | 5.5 |
- (NB) West side wall - selective clear (Tree Removal):
- | | |
|----------|-----|
| ① 5'x5' | 6.1 |
| ② 10'x3' | 7.8 |
| ③ 15'x3' | 5.9 |
| | 3.9 |
| | 5.3 |
- (NB) East side wall - selective clearing / Tree Removal:
- | | |
|----------|-----|
| ① 3'x3' | 3.5 |
| ② 3'x3' | |
| ③ 3'x3' | |
| ④ 22'x5' | |

ILLINOIS DEPARTMENT OF
 TRANSPORTATION
 ILL RTE 53
 SELECTIVE CLEARING & TREE
 REMOVAL
 SHEET 5 OF 9