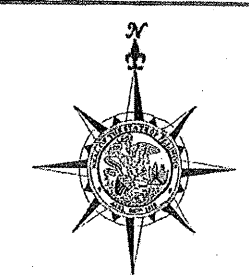
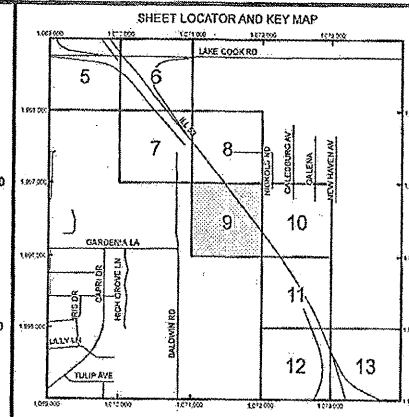
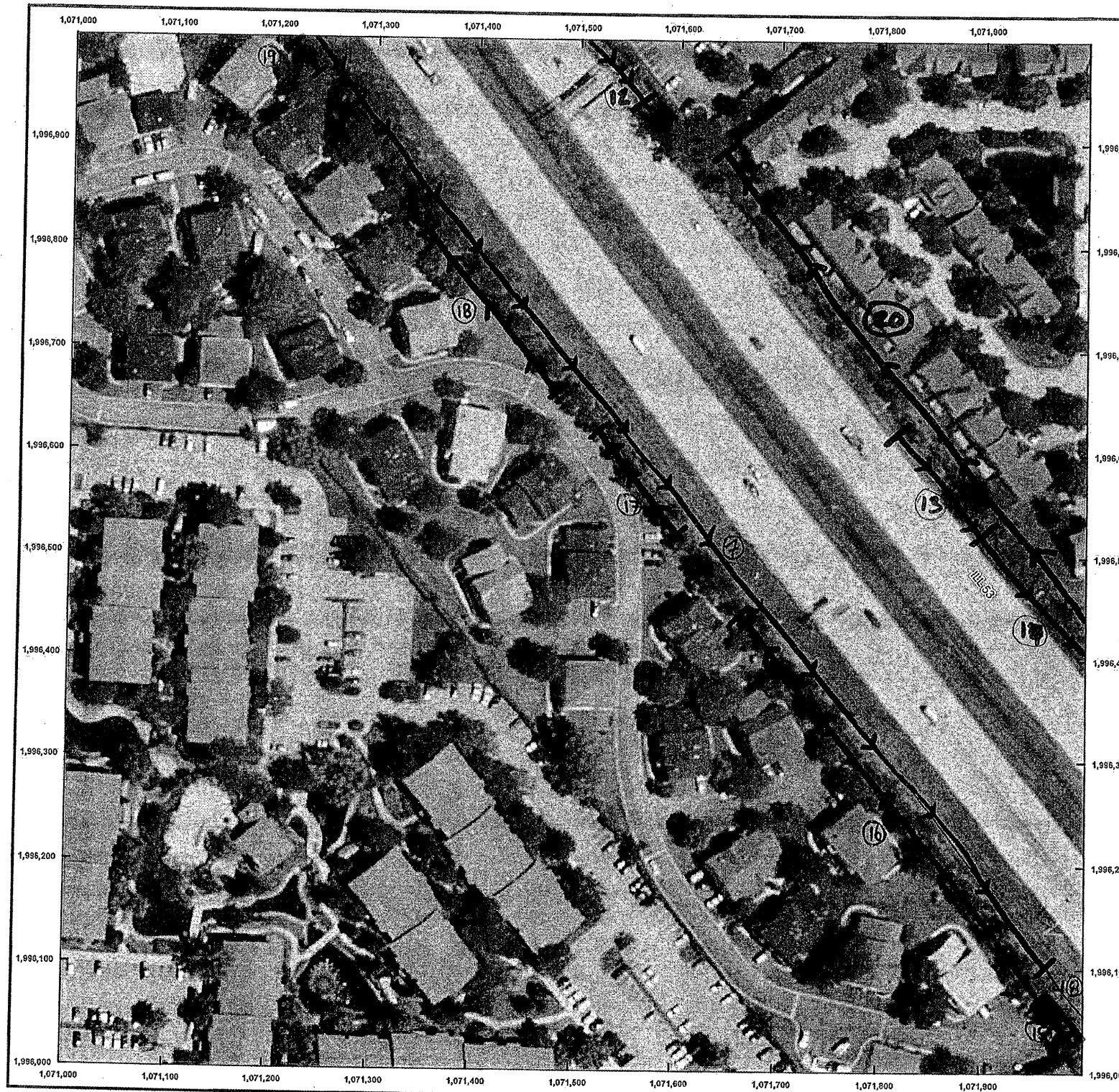


ROUTE	SECTION	COUNTY	TOTAL SHEETS	SHEET NUMBER
FAP 342	2011-026-I	COOK & LAKE	71	66

CONTRACT NO. 60P26



Date of Aerial: 2008
 All coordinates shown are in Illinois State Plane East Zone, NAD 83 Datum, Feet

- (58) East side wall - selective clearing / tree removal
 ① 2008' x 6' / 9.4, 9, 7.9
- (58) West side wall - selective clearing / tree removal
- | | | | | | | |
|-------------|------|------|------|------|------|-----|
| ⑤ 30' x 3' | 15.8 | 7.4 | 9.9 | 9.5 | 11.8 | 7.1 |
| ⑥ 427' x 3' | 3.1 | 9.9 | 10.2 | 6.2 | 1.4 | 9.1 |
| ⑦ 87' x 3' | 3.2 | 9.6 | 7 | 7.6 | 4.5 | 9.9 |
| ⑧ 265' x 3' | 3.1 | 10.5 | 8.1 | 7.3 | 7.4 | |
| ⑨ 16' x 2' | 9.2 | 9.7 | 8.3 | 15.5 | 11.2 | |
| | 2.5 | 8 | 6.5 | 16.3 | 9 | |
| | 6.1 | 8.6 | 6.3 | 12.2 | 2.1 | |
- (15) West side wall - selective clearing / tree removal:
- | | |
|--------------|------|
| ⑫ 95' x 5' | 8.1 |
| ⑬ 105' x 5' | 7 |
| ⑭ 210' x 10' | 10.3 |
- (15) East side wall - selective clearing / tree removal:
- | | |
|-------------|-----|
| ⑯ 615' x 3' | 16 |
| | 8 |
| | 6.8 |
| | 10 |

ILLINOIS DEPARTMENT OF
 TRANSPORTATION
 ILL RTE 53
 SELECTIVE CLEARING & TREE
 REMOVAL
 SHEET 6 OF 9