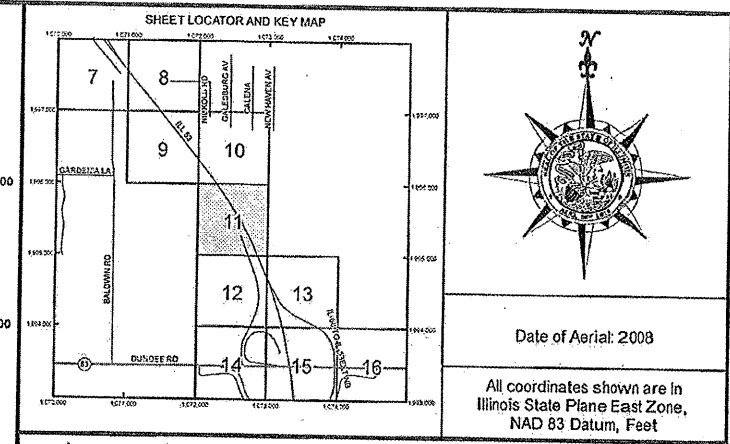
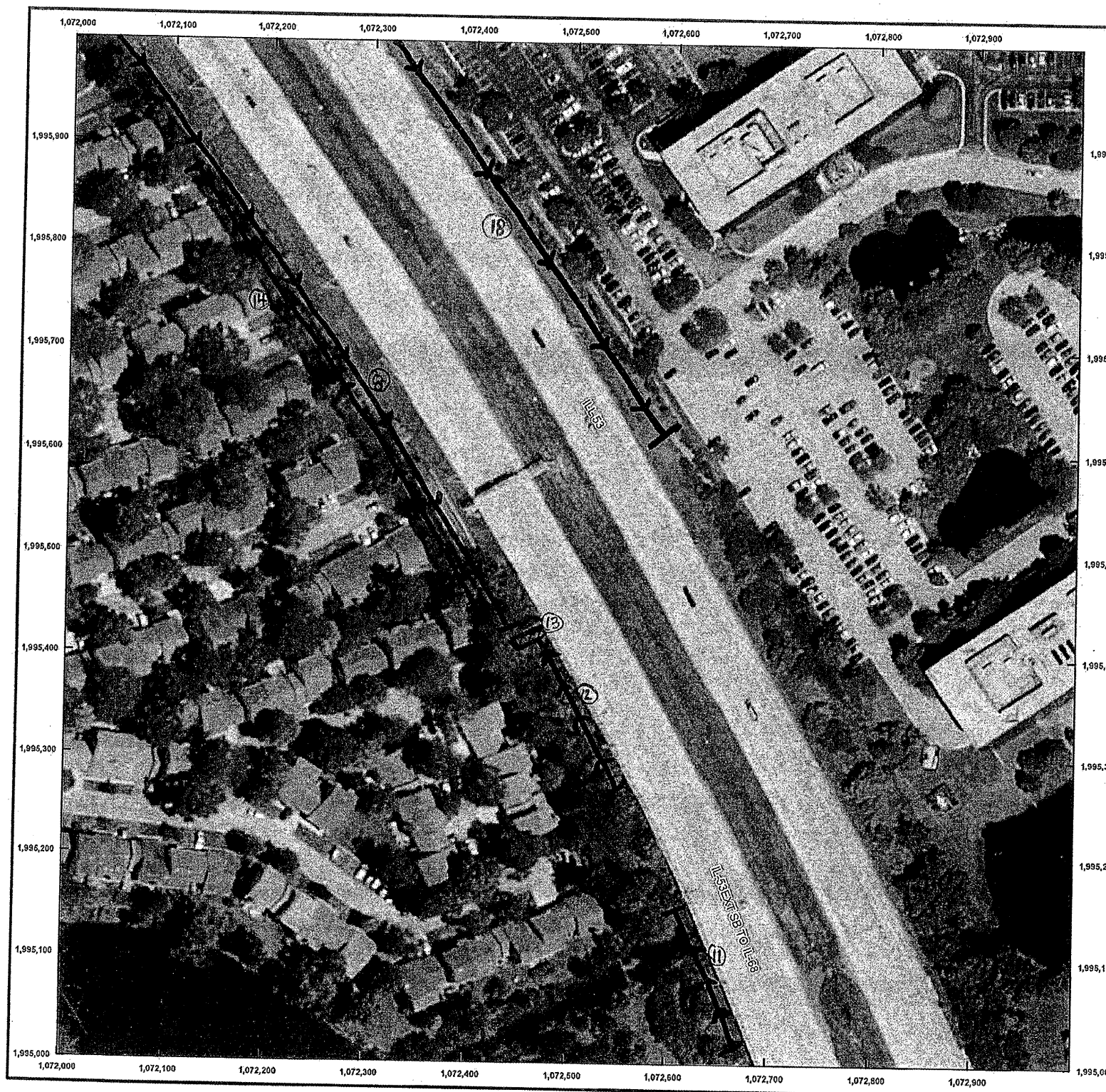


ROUTE	SECTION	COUNTY	TOTAL SHEETS	SHEET NUMBER
FAP 342	2011-026-1	COOK & LAKE	71	68

CONTRACT NO. 60P26



(58) East side wall - selective clearing:
 ① 672' x 6'

(58) West side wall - selective clearing / Tree Removal:
 ① 131' x 3' 7.4
 ② 174' x 5' 3.8
 ③ 41' x 5' (@ wall angle)
 ④ 401' x 5'

(NB) West side wall - selective clear / Tree Removal:
 ① 350' x 4' 16.4

ILLINOIS DEPARTMENT OF
 TRANSPORTATION
 ILL RTE 53
 SELECTIVE CLEARING & TREE
 REMOVAL
 SHEET 8 OF 9