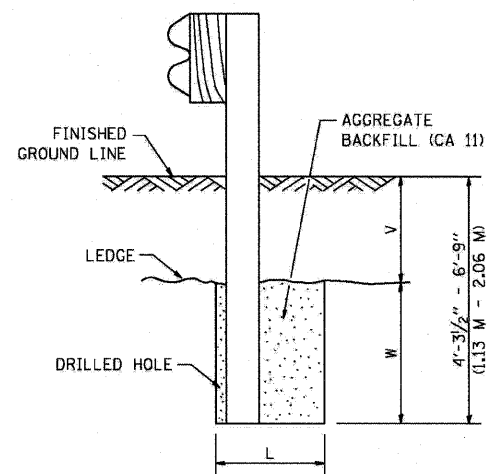


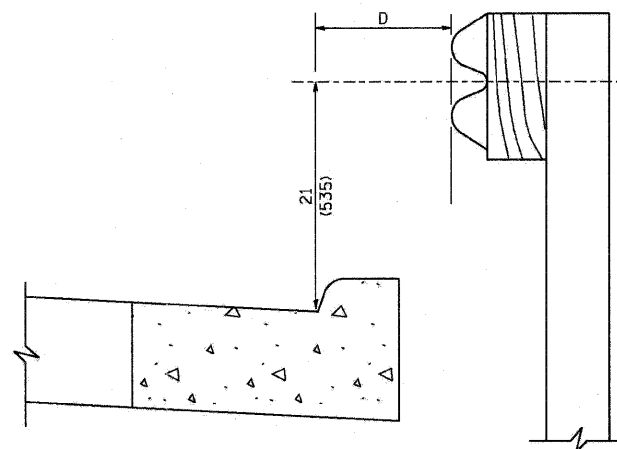
PLAN



NOTE:
LEDGE LINE IS TOP OF ROCK
LEDGE OR HARD SLAG FILL.

ELEVATION

FOOTING FOR POST WHEN IMPERVIOUS
MATERIAL IS ENCOUNTERED

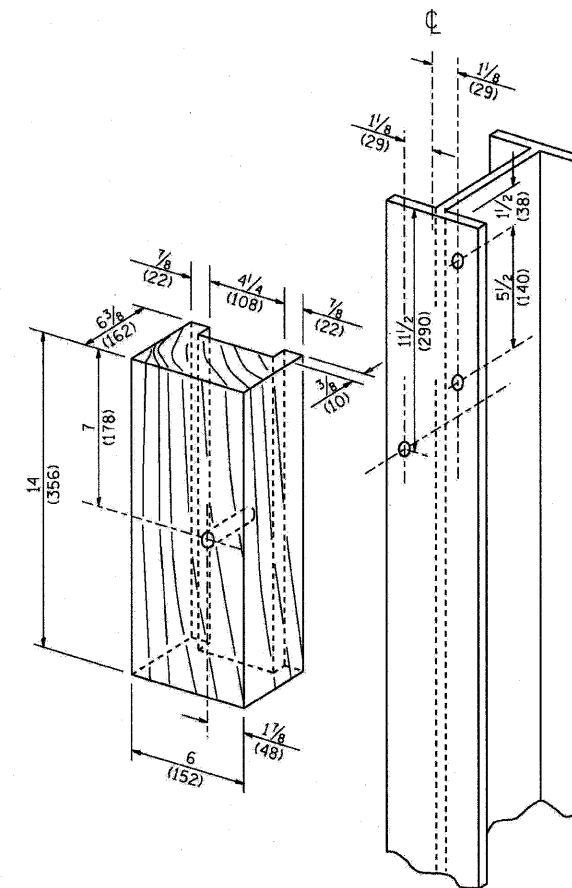


NOTE:

IF IT IS NECESSARY FOR D TO BE MORE THAN 12 (300) AND LESS THAN 10'-0" (3.0 M) TYPE M-2 (M-5) CURB AND GUTTER (STD. 606001) SHALL BE USED IN FRONT OF AND IN ADVANCE OF THE GUARDRAIL.

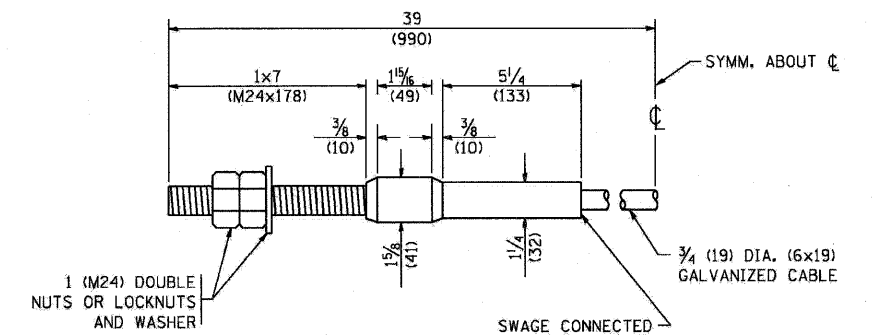
GUARDRAIL PLACED BEHIND CURB

(D = 0 DESIRABLE TO 12 (300) MAXIMUM)



WOOD BLOCK-OUT AND
STEEL POST DETAILS

| V | W | L | |
|----------------------------------|---------------------|-------------|-------------|
| | | STEEL POST | WOOD POST |
| 0 - 18 (0 - 460) | 24 (610) | 21 (530) | 23 (580) |
| >18 - 41.5 (> 460 - 825) | 12 (305) | 8 (203) | 10 (250) |
| >41.5 - 53.5 (> 825 - 1.13 M) | 12 - 0 (350 - 0) | 8 (203) | 10 (250) |



CABLE ASSEMBLY

(40,000 LBS (18,100 KG) MIN. BREAKING STRENGTH)
TIGHTEN TO TAUT TENSION