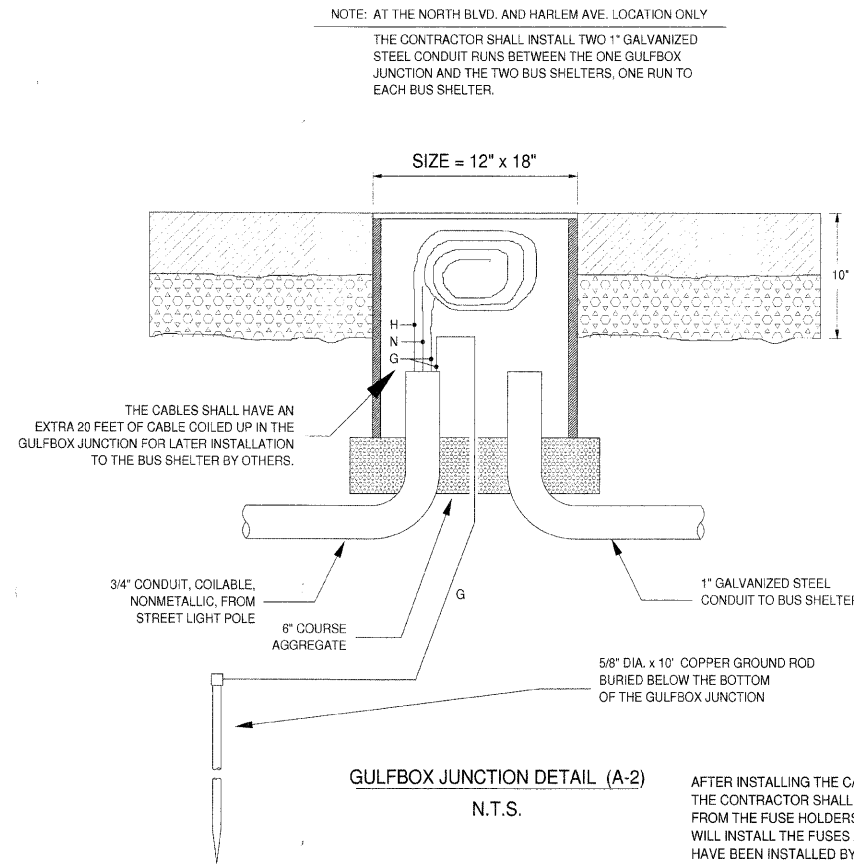


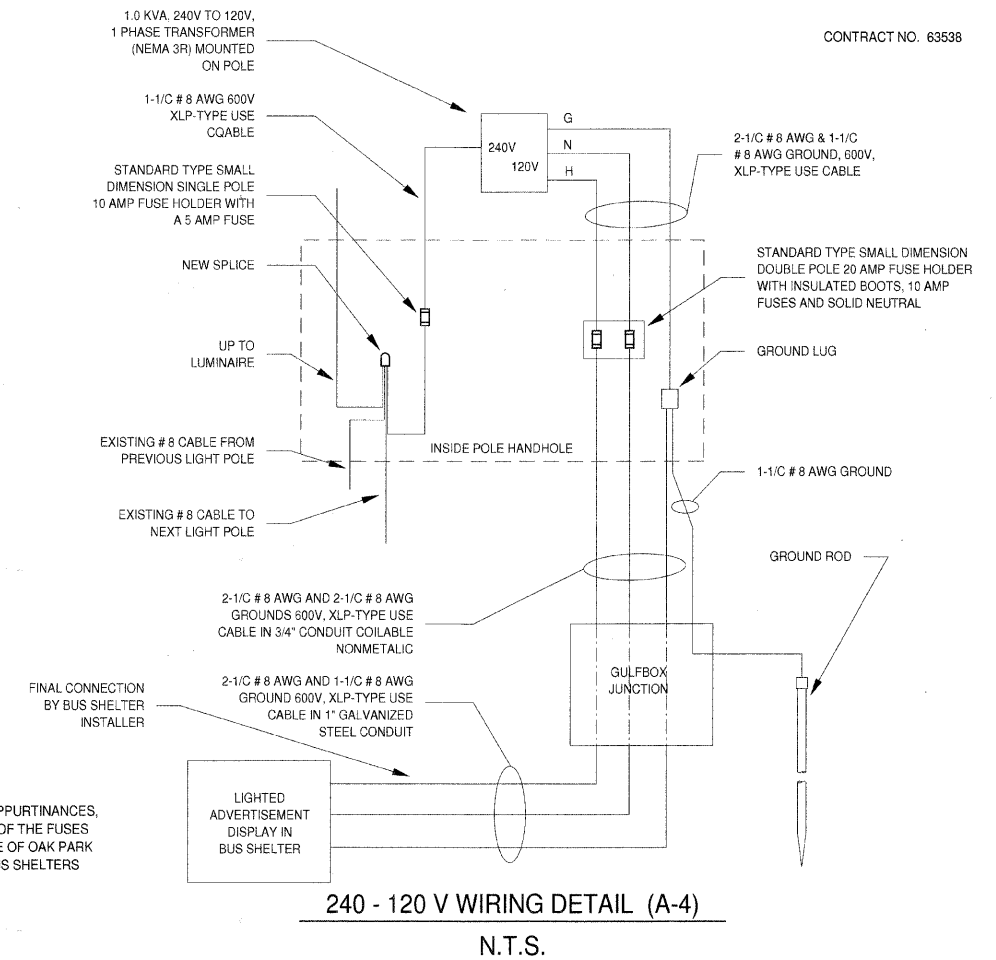
EXISTING POLE WIRING DETAIL (A-1)

N.T.S.



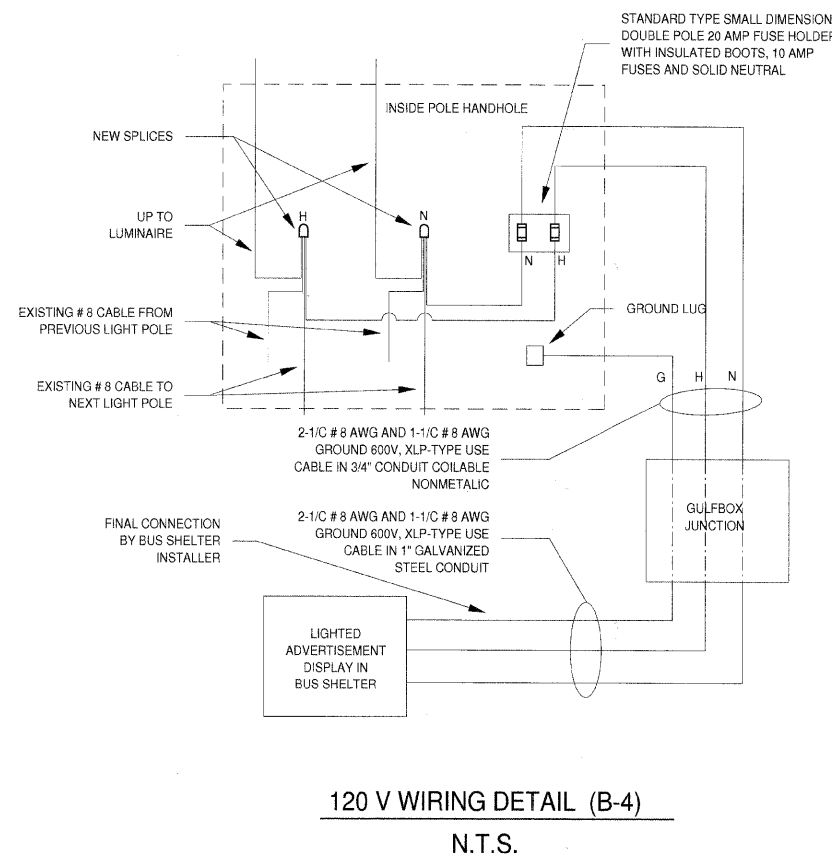
GULFBOX JUNCTION DETAIL (A-2)

N.T.S.



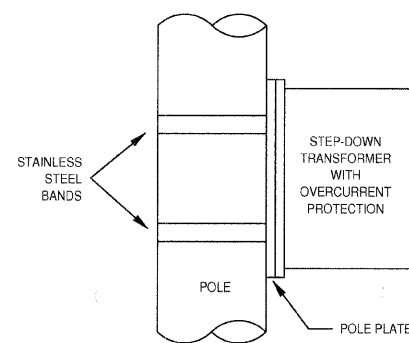
240 - 120 V WIRING DETAIL (A-4)

N.T.S.



120 V WIRING DETAIL (B-4)

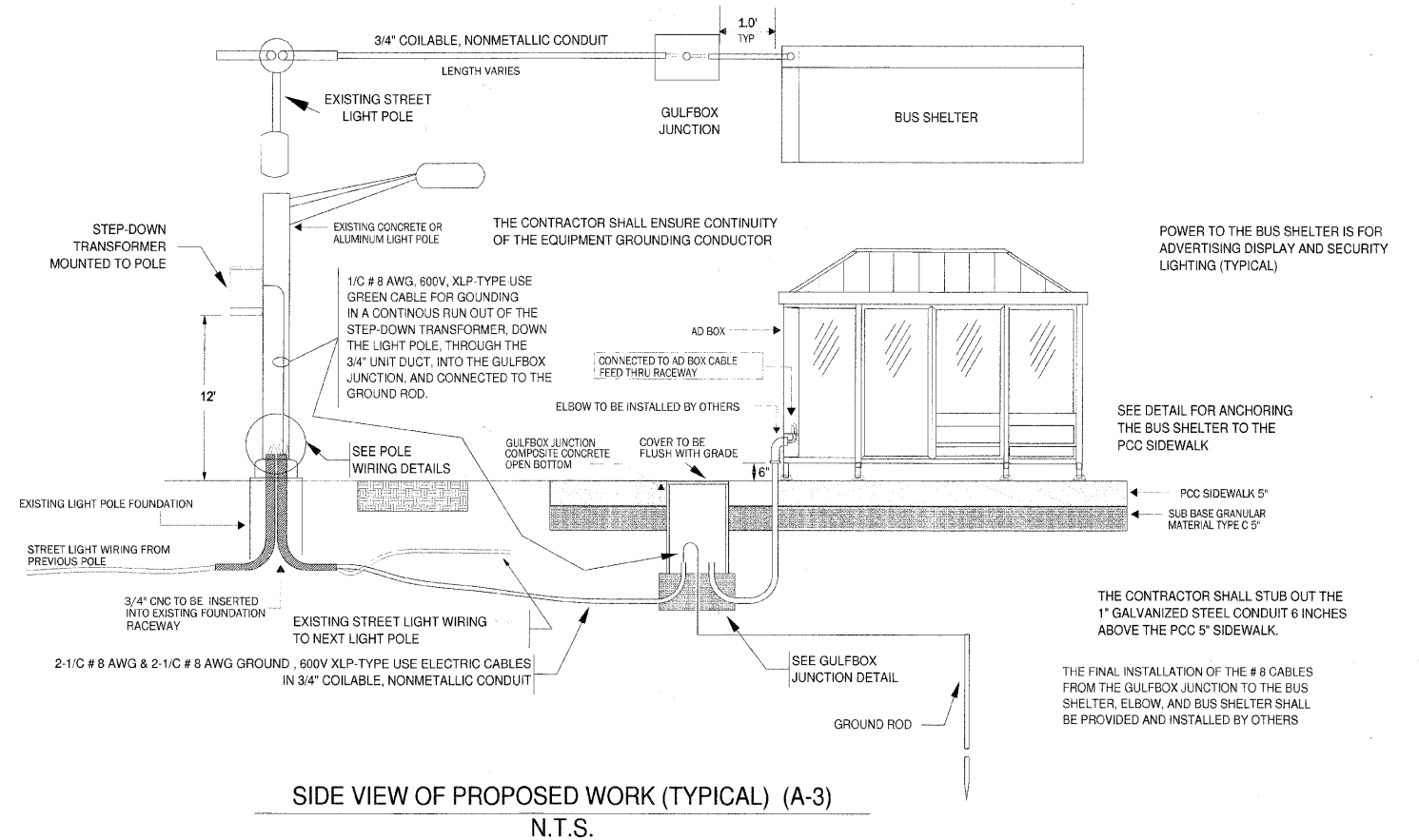
N.T.S.



STEP-DOWN TRANSFORMER MOUNTING DETAIL

AFTER INSTALLING THE CABLING AND APPURTINANCES, THE CONTRACTOR SHALL REMOVE ALL OF THE FUSES FROM THE FUSE HOLDERS. THE VILLAGE OF OAK PARK WILL INSTALL THE FUSES AFTER THE BUS SHELTERS HAVE BEEN INSTALLED BY OTHERS.

THE CONTRACTOR SHALL FURNISH AND INSTALL OVERCURRENT PROTECTION, INCLUDING FUSEHOLDERS AND FUSES, AS SHOWN ON THE PLAN DETAILS. THE MATERIALS AND INSTALLATION SHALL CONFORM TO SECTION 1065.01 OF THE STANDARD SPECIFICATIONS. OVERCURRENT PROTECTION, INCLUDING FUSEHOLDERS AND FUSES, SHALL BE CONSIDERED AS INCLUDED IN THE COST OF THE ELECTRIC CABLE PAY ITEM.



SIDE VIEW OF PROPOSED WORK (TYPICAL) (A-3)

N.T.S.