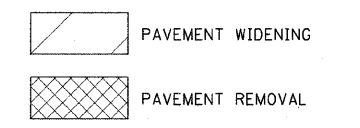
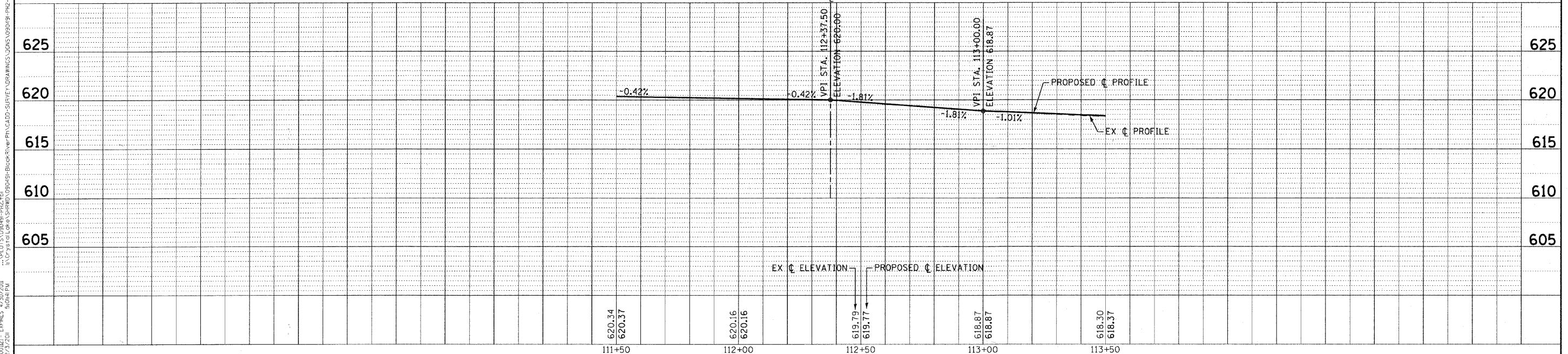


NOTE:
SEE SIGNAL SHEET FOR LOCATIONS
OF EXISTING TEMPORARY SIGNALS.



RIVER ROAD



DESIGNED - DSH	REVISED - 1-19-11 PER VILLAGE
DRAWN - LKB	REVISED -
CHECKED - LDH	REVISED -
DATE - 12/6/10	FILE - 090491-PH2-pp5.shx

VILLAGE OF SHOREWOOD, ILLINOIS BLACK ROAD AND RIVER ROAD INTERSECTION IMPROVEMENTS

GEOMETRICS PLAN AND PROFILE RIVER ROAD

SCALE: H: 1"=20' V: 1"=5'
STA. 111+50 TO STA. 113+50

F.A.U. RTE. 0298 0396	SECTION 09-00028-00-CH	COUNTY WILL	TOTAL SHEETS 63	SHEET NO. 17
C-91-726-09		CONTRACT NO. 63562		
FED. ROAD DIST. NO. 1 ILLINOIS FED. AID PROJECT M-9003(385)				

COPYRIGHT © 2010 BY BAXTER & WOODMAN, INC.
 STATE OF ILLINOIS - PROFESSIONAL DESIGN FIRM
 LICENSE NO. 0298-0396 - EXPIRES 7/31/2011
 2/23/2010