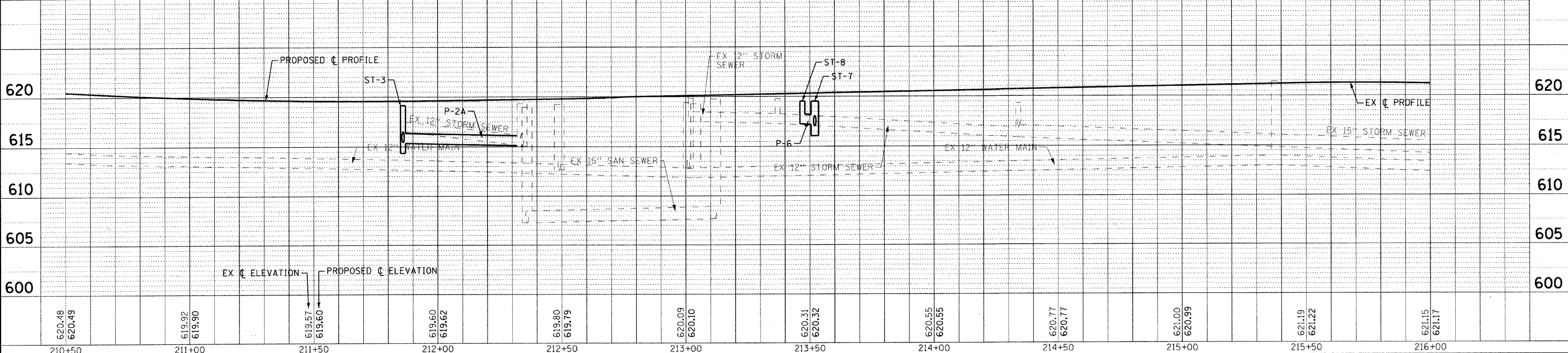
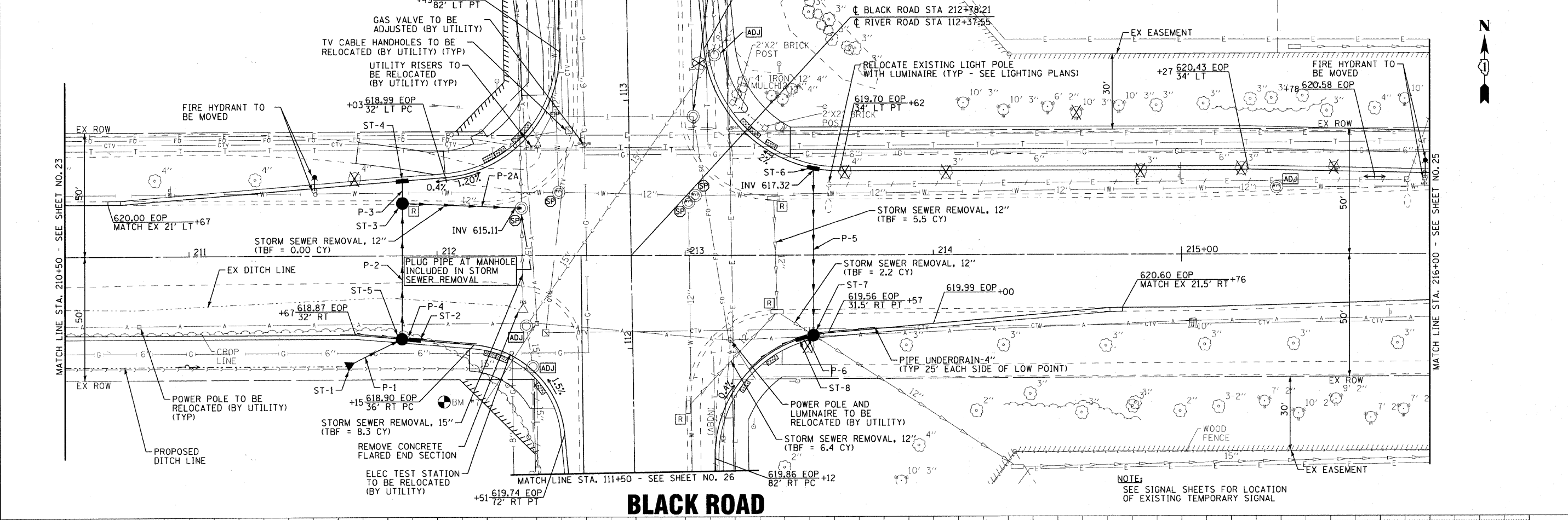


PIPES					
NO.	TYPE	LENGTH (LF)	DIA (IN)	SLOPE	TBF (CY)
P-1	STORM SEWERS, CLASS A, TYPE 1	19	15	4.00%	1.2
P-2	STORM SEWERS, CLASS A, TYPE 1	54	15	0.50%	9.1
P-2A	STORM SEWERS, (WATER MAIN REQUIREMENTS)	48	15	0.50%	11.3
P-3	STORM SEWERS, CLASS A, TYPE 1 (RUBBER GASKET)	9	12	2.00%	1.7
P-4	STORM SEWERS, CLASS A, TYPE 1	5	12	2.00%	0.7
P-5	STORM SEWERS, CLASS A, TYPE 1 (RUBBER GASKET)	67	12	0.40%	8.8
P-6	STORM SEWERS, CLASS A, TYPE 1	5	12	2.00%	0.7

STORM STRUCTURES							
NO.	STATION	OFFSET	TYPE	FRAME	RIM / EP	INVERT	
ST-1	211+63	45' RT	PRC FLARED END SECTION	---	---	617.18 15" NE	
ST-2	211+91	34' RT	INLET, TYPE A	TY 11 F&G	618.77 EP	615.92 12" W	
ST-3	211+86	21' LT	CATCH BASIN, TYPE C	TY 1 CLID	619.14 RIM	615.45 12" N, 615.45 15" S, 615.35 15" E	
ST-4	211+86	30' LT	INLET, TYPE A	TY 11 F&G	618.92 EP	615.63 12" S	
ST-5	211+86	34' RT	CATCH BASIN, TYPE C	TY 11 F&G	618.79 EP	615.82 12" E, 616.42 15" SW, 615.72 15" N	
ST-6	213+52	35' LT	INLET, TYPE A	TY 11V F&G	619.48 EP	617.33 12" S	
ST-7	213+52	32' RT	CATCH BASIN, TYPE C	TY 11 F&G	619.51 EP	617.16 12" W, 617.06 12" N, 617.06 12" SE (EX)	
ST-8	213+47	34' RT	INLET, TYPE A	TY 11 F&G	619.53 EP	617.26 12" E	



DESIGNED - DSH	REVISED - 1-19-11 PER VILLAGE	F.A.U. R.T.E. 0298 0596	SECTION 09-00028-00-CH	COUNTY WILL	TOTAL SHEETS 63	SHEET NO. 24
DRAWN - UKB	REVISED -	C-91-726-09		CONTRACT NO. 63562		
CHECKED - LDH	REVISED -	FED. ROAD DIST. NO. 1 (ILLINOIS) FED. AID PROJECT M-9003(385)				
DATE - 12/6/10	FILE - 090491-PH2-DU2.shp					