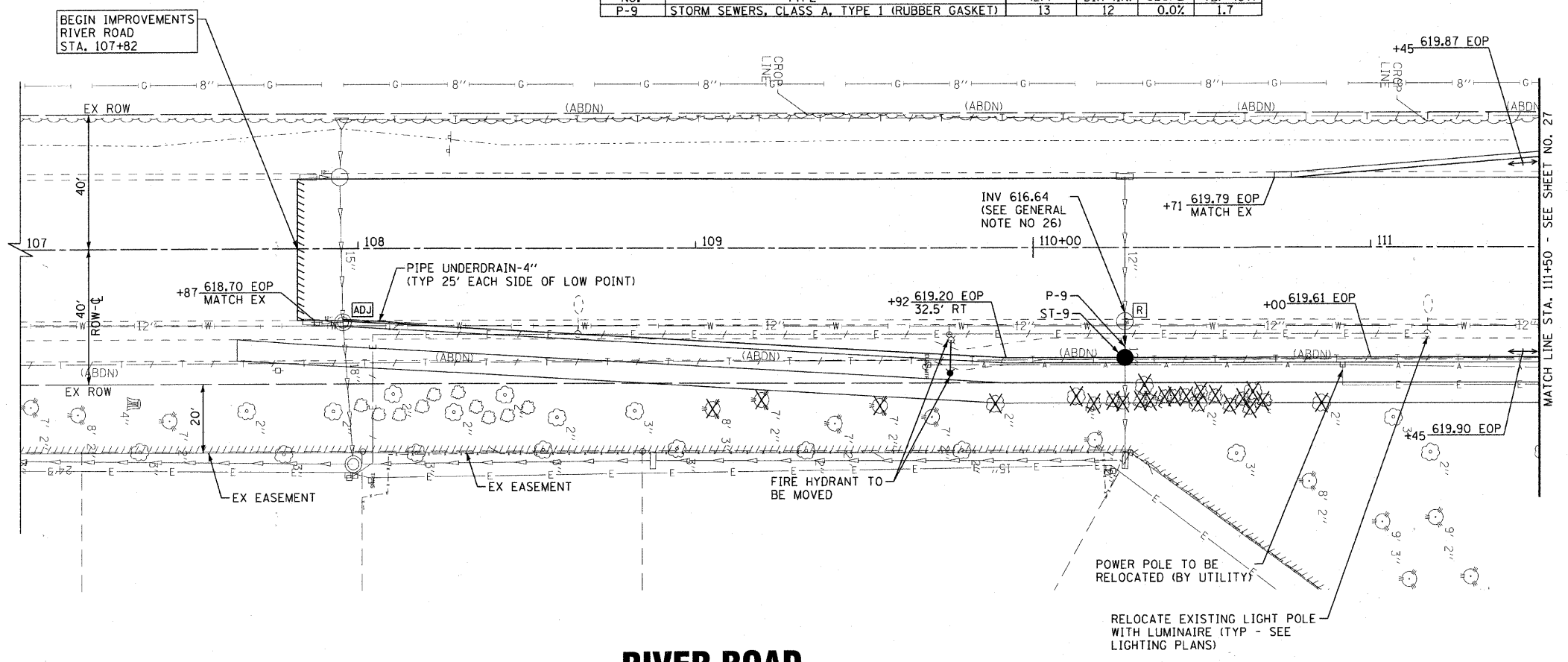
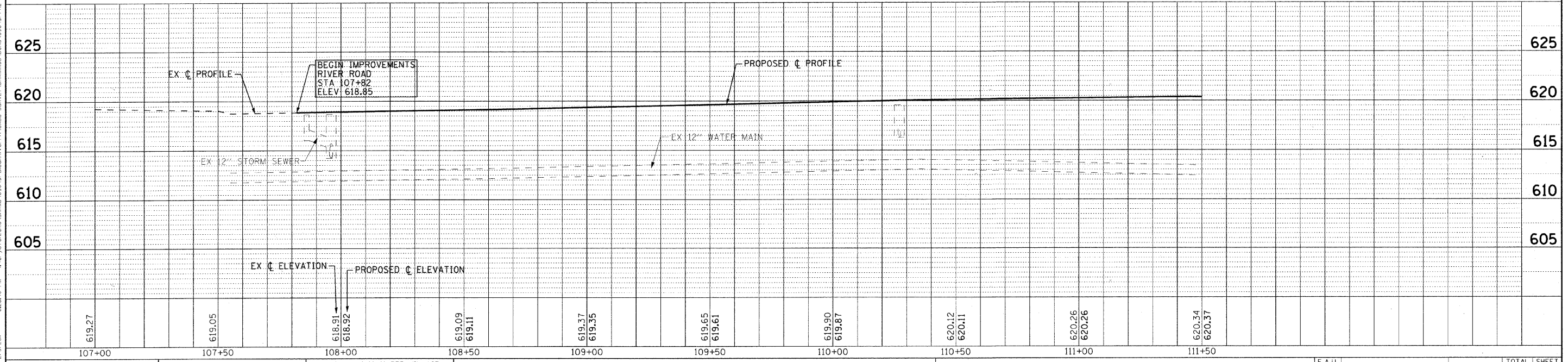


STORM STRUCTURES						
NO.	STATION	OFFSET	TYPE	FRAME	RIM / EP	INVERT
ST-9	110+27	32.5' RT	CATCH BASIN, TYPE C	TYPE IIV F&G	619.39 EP	616.64 12" W, 616.64 12" E (EX) (FIELD VERIFY)

PIPES					
NO.	TYPE	LENGTH (LF)	DIA (IN)	SLOPE	TBF (CY)
P-9	STORM SEWERS, CLASS A, TYPE I (RUBBER GASKET)	13	12	0.0%	1.7



RIVER ROAD



COUNTY OF COOK, ILLINOIS
 STATE OF ILLINOIS - PROFESSIONAL DESIGN FIRM
 LICENSE NO. 084-00023 - EXPIRES 4/30/2011
 622840 PM 8:00 AM
 2/23/2011
 C:\Crystal\cove\SHRND\090491-DR\090491-DR\DWG\PH2-DU4.sht



DESIGNED - DSH	REVISED - 1-19-11 PER VILLAGE
DRAWN - UKB	REVISED -
CHECKED - LDH	REVISED -
DATE - 12/6/10	FILE - 090491-PH2-DU4.sht

VILLAGE OF SHOREWOOD, ILLINOIS BLACK ROAD AND RIVER ROAD INTERSECTION IMPROVEMENTS

DRAINAGE AND UTILITY RIVER ROAD

SCALE: H: 1"=20' V: 1"=5'
STA. 107+00 TO STA. 111+50

F.A.U. RTE. 0298 0396	SECTION 09-00028-00-CH	COUNTY WILL	TOTAL SHEETS 63	SHEET NO. 26
C-91-726-09			CONTRACT NO. 63562	
FED. ROAD DIST. NO. 1 ILLINOIS FED. AID PROJECT M-9003(385)				