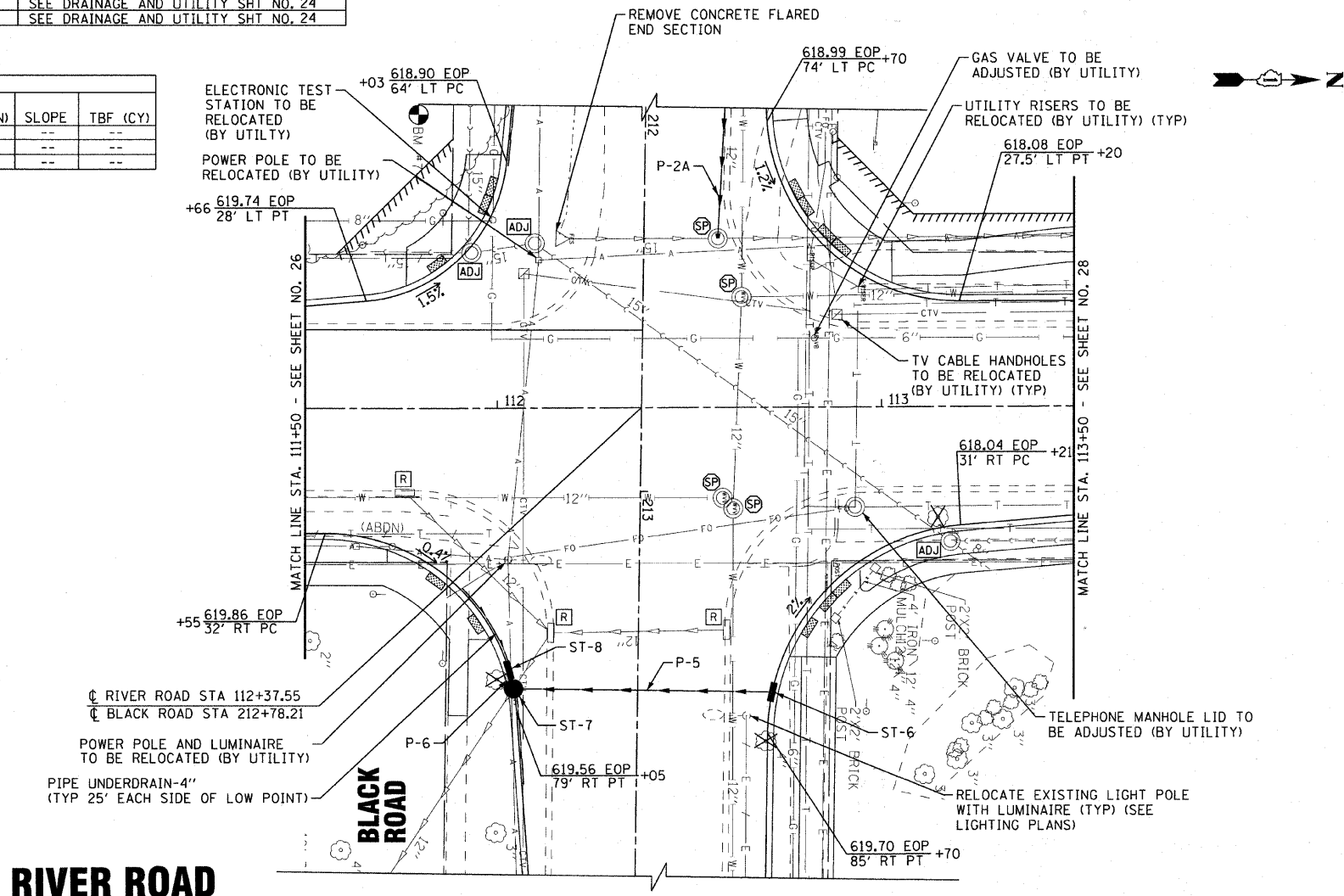
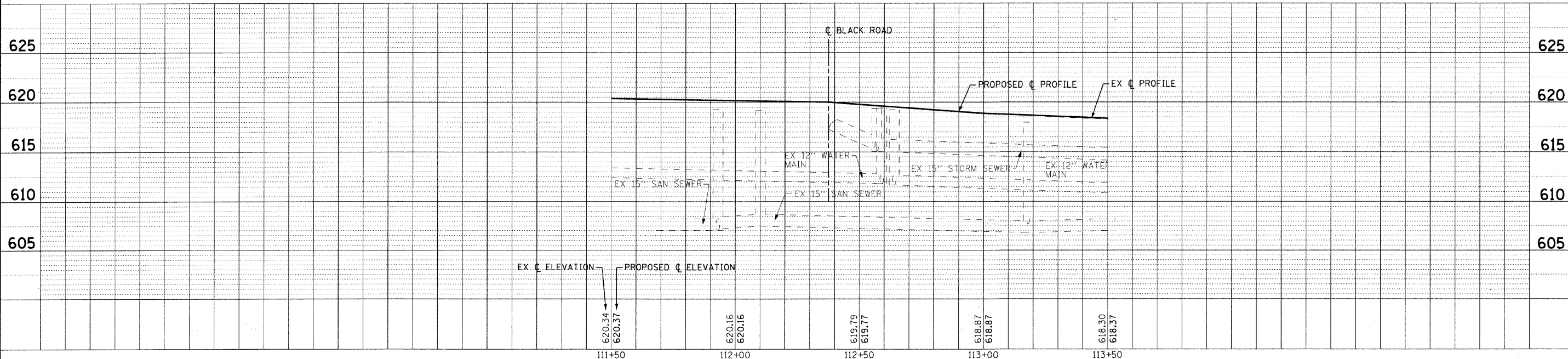


STORM STRUCTURES						
NO.	STATION	OFFSET	TYPE	FRAME	RIM / EP	INVERT
ST-6	--	--	--	--	--	SEE DRAINAGE AND UTILITY SHT NO. 24
ST-7	--	--	--	--	--	SEE DRAINAGE AND UTILITY SHT NO. 24
ST-8	--	--	--	--	--	SEE DRAINAGE AND UTILITY SHT NO. 24

PIPES						
NO.	TYPE	LENGTH (LF)	DIA (IN)	SLOPE	TBF (CY)	
P-2A	SEE DRAINAGE AND UTILITY SHT NO. 24	--	--	--	--	--
P-5	SEE DRAINAGE AND UTILITY SHT NO. 24	--	--	--	--	--
P-6	SEE DRAINAGE AND UTILITY SHT NO. 24	--	--	--	--	--



**RIVER ROAD**



DESIGNED - DSH	REVISED - 1-19-11 PER VILLAGE
DRAWN - UKB	REVISED -
CHECKED - LDH	REVISED -
DATE - 12/6/10	FILE - 090491-PH2-DU5.sh+

**VILLAGE OF SHOREWOOD, ILLINOIS  
BLACK ROAD AND RIVER ROAD  
INTERSECTION IMPROVEMENTS**

**DRAINAGE AND UTILITY  
RIVER ROAD**

SCALE: H: 1"=20' V: 1"=5'  
STA. 111+50 TO STA. 113+50

F.A.U. RTE. 0298 0386	SECTION 09-00028-00-CH	COUNTY WILL	TOTAL SHEETS 63	SHEET NO. 27
C-91-726-09		CONTRACT NO. 63562		
FED. ROAD DIST. NO. 1 ILLINOIS FED. AID PROJECT M-9003(385)				

COPYRIGHT © 2010 BY BAXTER & WOODMAN, INC.  
 STATE OF ILLINOIS - PROFESSIONAL DESIGN FIRM  
 LICENSE NO. 184-00021 - EXPIRES 4/30/2011  
 2/23/2011 11:57:41 AM