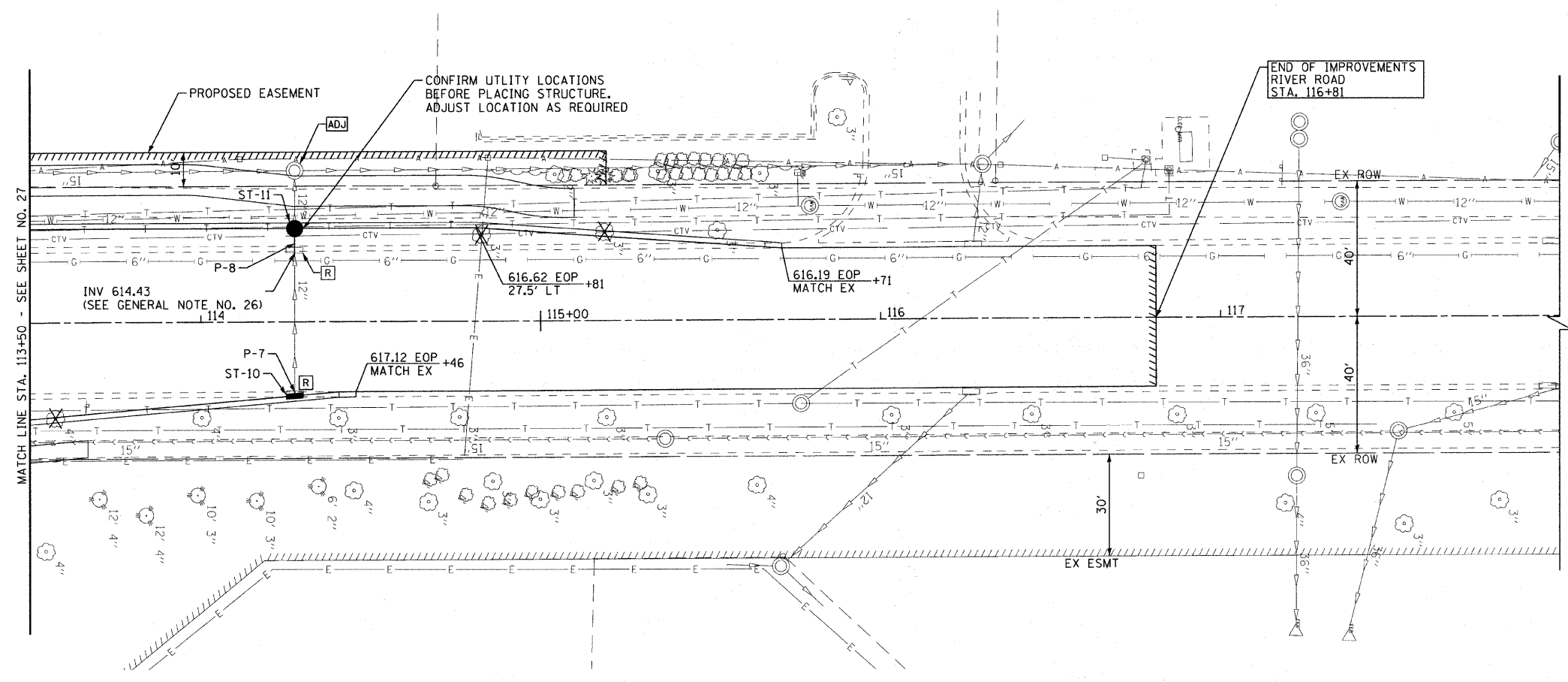
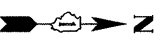
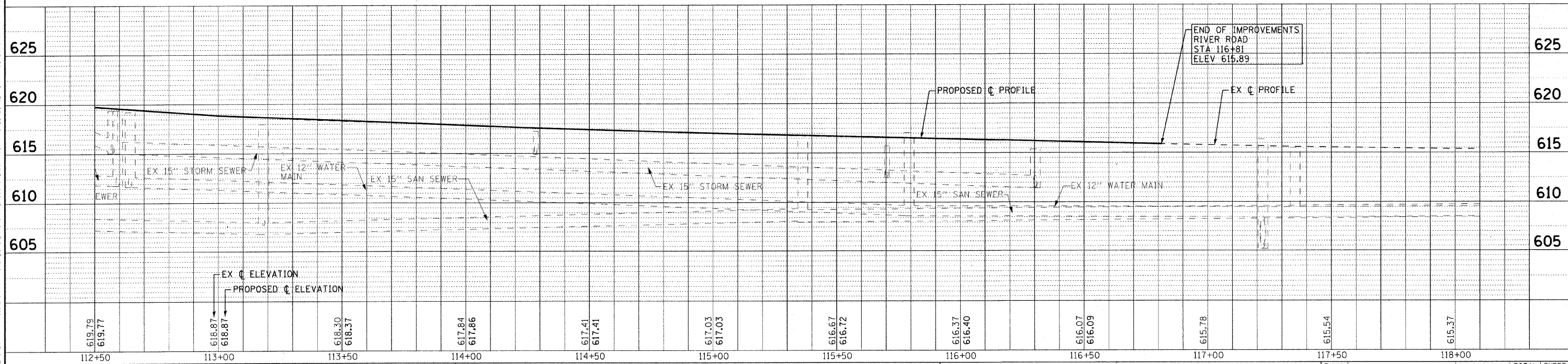


STORM STRUCTURES						
NO.	STATION	OFFSET	TYPE	FRAME	RIM / EP	INVERT
ST-10	114+28	22' RT	INLET, TYPE A	TY 11V F&G	617.15 EP	614.92 12" W
ST-11	114+28	27.5' LT	CATCH BASIN, TYPE C	TY 11V F&G	617.13 EP	614.33 12" E, 614.33 12" W (EX) (FIELD VERIFY)

PIPES						
NO.	TYPE	LENGTH (LF)	DIA (IN)	SLOPE	TBF (CY)	
P-7	STORM SEWERS, CLASS A, TYPE 1	2	12	1.00%	0.1	
P-8	STORM SEWERS, CLASS A, TYPE 1	7	12	1.64%	0.9	



RIVER ROAD



DESIGNED - DSH	REVISED - 1-19-11 PER VILLAGE
DRAWN - LKB	REVISED -
CHECKED - LDH	REVISED -
DATE - 12/6/10	FILE - 090491-PH2-DUG.sh1

VILLAGE OF SHOREWOOD, ILLINOIS BLACK ROAD AND RIVER ROAD INTERSECTION IMPROVEMENTS

DRAINAGE AND UTILITY RIVER ROAD

SCALE: H: 1"=20' V: 1"=5'
STA. 112+50 TO STA. 118+00

F.A.U. RTE. 0298 0396	SECTION 09-00028-00-CH	COUNTY WILL	TOTAL SHEETS 63	SHEET NO. 28
C-91-726-09		CONTRACT NO. 63562		FED. ROAD DIST. NO. 1 ILLINOIS FED. AID PROJECT M-9003(385)

COPYRIGHT © 2010 BY BAXTER A. WOODMAN INC.
 STATE OF ILLINOIS - PROFESSIONAL DESIGN FIRM
 LICENSE NO. 081-00021 - EXPIRES 7/30/2011
 2/2/2011 6:44:03 PM

