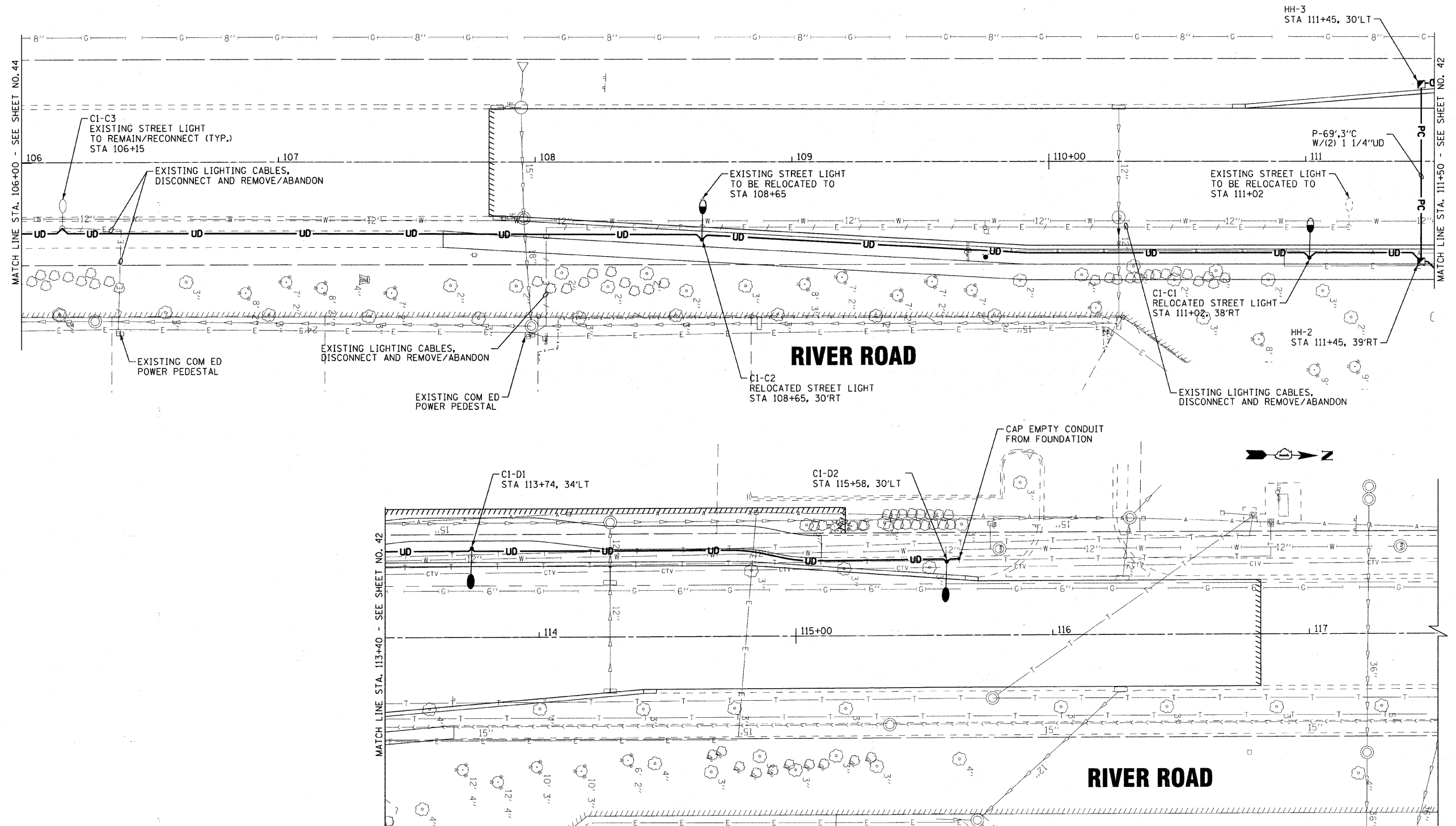


LEGEND

<ul style="list-style-type: none"> <li>  PROPOSED COM ED POWER POLE                 </li> <li>  EXISTING COM ED POWER POLE                 </li> <li>  PROPOSED RELOCATION OF EXISTING LIGHT, CLEAN AND RELAMP                 </li> <li>  PROPOSED STREET LIGHT 310W HPS, 35 FT M.H., 10 FT MAST ARM                 </li> <li>  PROPOSED STREET LIGHT, 250W HPS, 45 FT M.H., 15 FT MAST ARM ON COMBINATION TRAFFIC SIGNAL/STREET LIGHT POLE                 </li> <li>  PROPOSED LIGHTING CONTROLLER, 100 AMP, 120/240 V, 3 WIRE                 </li> </ul>	<ul style="list-style-type: none"> <li>  EXISTING STREET LIGHT, CLEAN AND RELAMP                 </li> </ul>
--	--



COPYRIGHT © 2009 BY BAXTER & WOODMAN, INC.  
 STATE OF ILLINOIS - PROFESSIONAL DESIGN FIRM  
 LICENSE NO. 384-00212, EXPIRES 4/30/2011  
 330 S. WASHINGTON ST., SUITE 200, CHICAGO, IL 60601  
 TEL: 312.467.1200, FAX: 312.467.1201, WWW.B&W.COM



DESIGNED - MWH	REVISED - 1-31-11 PER VILLAGE
DRAWN - CJC	REVISED -
CHECKED - MDK	REVISED -
DATE - 12/6/10	FILE - 090491-PH2-SL4.shp

VILLAGE OF SHOREWOOD, ILLINOIS  
 BLACK ROAD & RIVER ROAD  
 INTERSECTION IMPROVEMENT

LIGHTING PLAN  
 RIVER ROAD

SCALE: 1"=20'      STA. 106+00      TO STA. 117+50

F.A.U. RTE. 0298 0396	SECTION 09-00028-00-CH	COUNTY WILL	TOTAL SHEETS 63	SHEET NO. 45
C-91-726-09		CONTRACT NO. 63562		
FED. ROAD DIST. NO. 1   ILLINOIS FED. AID PROJECT M-9003(385)				