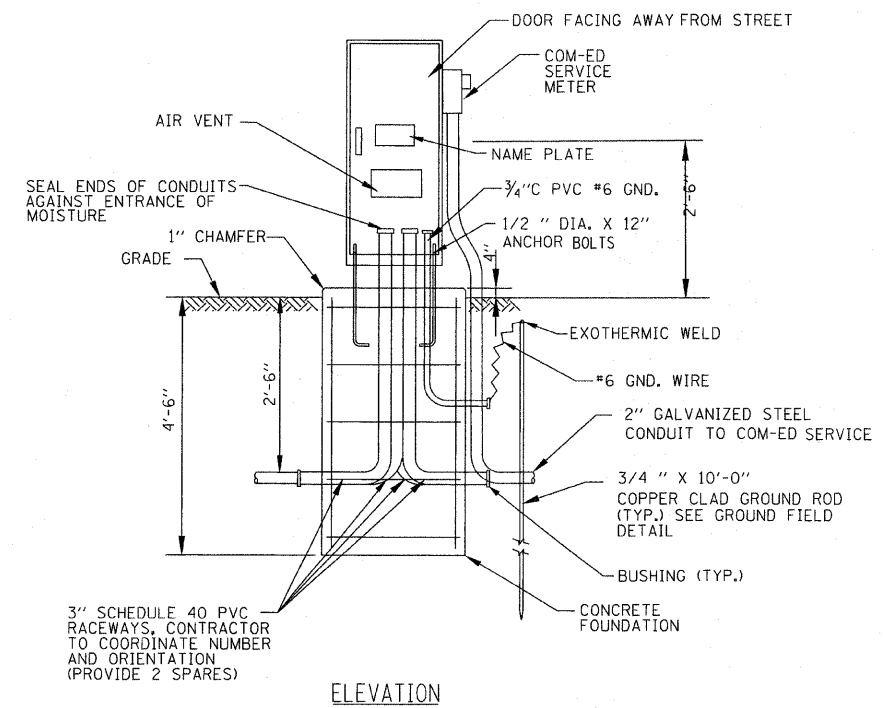


LIGHTING CONTROLLER
WIRING DIAGRAM



LIGHTING CONTROLLER AND FOUNDATION DETAIL
NO SCALE

ITEM	QTY.	DESCRIPTION
A	1	MAIN CIRCUIT BREAKER, MOLDED CASE, THERMAL MAGNETIC, 2-POLE, 240 V. SINGLE-PHASE, 100A, BOLT-ON TYPE, TRIP INTERRUPTING RATING OF 22,000 RMS SYMMETRICAL AMPERES AT 240 V.
B	1	CONTROL CIRCUIT BREAKER, MOLDED CASE, THERMAL MAGNETIC, SINGLE-POLE, 120 V. SINGLE PHASE 20 A. BOLT-ON TYPE, TRIP INTERRUPTING RATING OF 14,000 RMS SYMMETRICAL AMPERES AT 120 V.
C	1	LIGHTING CONTACTOR MECHANICALLY HELD, SQUARE "D" IV010600V 200A, 2-POLE, 600 V. WITH 120 COIL OR EQUAL
D	1	120V OPERATED DPDT 60 HZ COIL, 600V, 2 N.O. & 2 N.C. CONTACTS
E	1	ON-OFF-AUTO 3-POSITION SELECTOR SWITCH GE CR104P HEAVY DUTY SWITCH, RATED FOR 10 A. AT 600 VAC.
F	1	GFCI RECEPTACLE, 120 V., 20 A. SPEC. GRADE, NEMA CONFIG. 5-20R IN WEATHERPROOF CAST ALUMINUM BOX W/ WEATHERPROOF COVER
G	1	SPDT LIMIT SWITCH WITH SIDE PUSH ROD PLUNGER RATED 20 A. AT 120 V. OR EQUAL
H	1	100 WATT LIGHT FIXTURE, VAPOR TIGHT, WITH GLOBE, GUARD AND CAST ALUMINUM MOUNTING BOX.
I	4	SECONDARY SURGE ARRESTER SQUARE D SDSA1175, 175 VAC PHASE-TO-GROUND MAXIMUM OR EQUAL
J	4	BRANCH CIRCUIT BREAKER, MOLDED CASE, THERMAL MAGNETIC, 2-POLE, 240 V. SINGLE-PHASE, 30A, TRIP INTERRUPTING RATING 22,000 RMS SYMMETRICAL AMPERES AT 240 V.
K	8	TERMINAL BLOCK RATED 600 V., 85 A.
L	1	COPPER NEUTRAL BUS
M	1	COPPER GROUND BUS
N	1	PHOTOCELL - 120V, BUTTON STYLE, DELAY TYPE, SPST

NOTES

- CABINET SHALL BE FABRICATED FROM 0.125-INCH SHEET ALUMINUM, ALLOY 5052 FORMED AND ARC WELDED ASSEMBLY WITH NEMA 3R RATING. MANUFACTURED BY SOUTHERN MFG. (DIV. OF ACCORD INDUSTRIES) AND AS COMPACT AS POSSIBLE.
- ALL SCREWS AND HARDWARE SHALL BE PLATED, GALVANIZED, OR MADE OF BRASS, ALUMINUM OR STAINLESS STEEL.
- NAME PLATE SHALL BE STEEL W/ENGRAVED 0.75-INCH HIGH LETTERS FILLED IN BLACK, "STREET LIGHTING"
- CABINET SHALL HAVE NATURAL ALUMINUM FINISH.
- ELECTRIC UTILITY METER BOX SHALL BE MOUNTED ON THE SIDE OF CONTROL CABINET AS SHOWN ON THE PANEL LAYOUT DIAGRAM.
- THE COMPLETED CONTROLLER AND ALL ELECTRICAL COMPONENTS SHALL BE U.L. LISTED AS AN ENCLOSED INDUSTRIAL CONTROL PANEL UNDER UL508A, AND SHOULD BE SERVICE ENTRANCE RATED.
- METAL MOUNTING PANEL SHALL BE #10 GAUGE GALVANIZED SHEET STEEL FLANGED BACK 0.75-INCHES I.D. ON 4 SIDES.
- CIRCUIT BREAKERS AND CONTACTOR AND OTHER COMPONENTS SHALL BE MOUNTED ON 0.125-INCH THICK GLASTIC INSULATION BACK PANEL.
- ALL DEVICES SHALL BE FRONT REMOVABLE.
- BUS BAR SHALL HAVE 22 LUG TERMINALS SIZED TO ACCOMMODATE REQUIRED WIRE SIZES. NEUTRAL BUS SHALL BE PAINTED WHITE. GROUND BUS SHALL BE PAINTED GREEN.
- ALL LUGS SHALL BE COPPER SCREWS AND CONNECTORS, SPRING HELD.
- ALL WIRING TERMINATIONS SHALL BE RATED NOT LESS THAN 75 DEGREE CENTIGRADE.
- ALL CONTROL WIRING SHALL BE 600V MACHINE TOOL WIRE TYPE MTW.
- ALL POWER WIRING SHALL BE 600V TYPE RHH/RHW (XLP-TYPE USE).
- A LAMINATED COPY OF THE CIRCUIT SCHEMATIC DIAGRAM SHALL BE ATTACHED TO THE INSIDE OF THE CONTROLLER.
- ALL 120 VOLT SYSTEM AND ALL CONTROL WIRING SHALL BE #12 AWG STRANDED UNLESS OTHERWISE INDICATED.
- ALL WIRING SHALL BE NEATLY DRESSED AND SUPPORTED.
- SERVICE EQUIPMENT SHALL BE MARKED TO IDENTIFY IT AS BEING SUITABLE FOR USE AS SERVICE EQUIPMENT.
- CONNECTION OF SURGE ARRESTOR TO LINE SIDE OF MAIN CIRCUIT BREAKER SHALL NOT BE "DOUBLE LUGGED".

COPYRIGHT © 2008 BY BAXTER & WOODMAN, INC.
 STATE OF ILLINOIS - PROFESSIONAL DESIGN FIRM
 LICENSE NO. 184-00022 - EXPIRES 4/30/2011
 12/27/2011



DESIGNED - MWH	REVISED -
DRAWN - CJC	REVISED -
CHECKED - MDK	REVISED -
DATE - 12/6/10	FILE - 090491-PH2-LightngDet.sht

VILLAGE OF SHOREWOOD, ILLINOIS
BLACK ROAD & RIVER ROAD
INTERSECTION IMPROVEMENT

STREET LIGHTING DETAILS

SCALE: NONE STA. TO STA.

F.A.U. RTE. 0298 0396	SECTION 09-00028-00-CH	COUNTY WILL	TOTAL SHEETS 63	SHEET NO. 47
C-91-726-09			CONTRACT NO. 63562	
FED. ROAD DIST. NO. 1 ILLINOIS FED. AID PROJECT M-9003(385)				