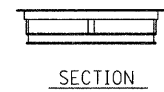
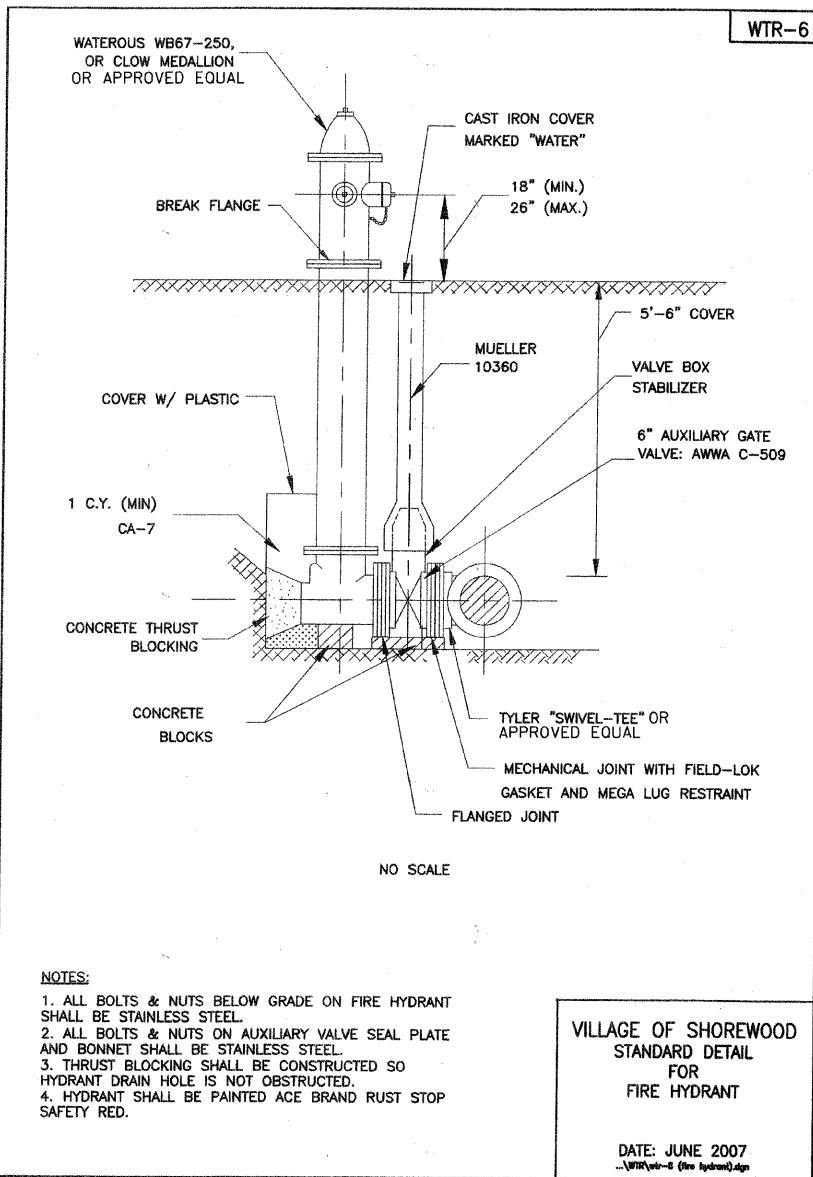
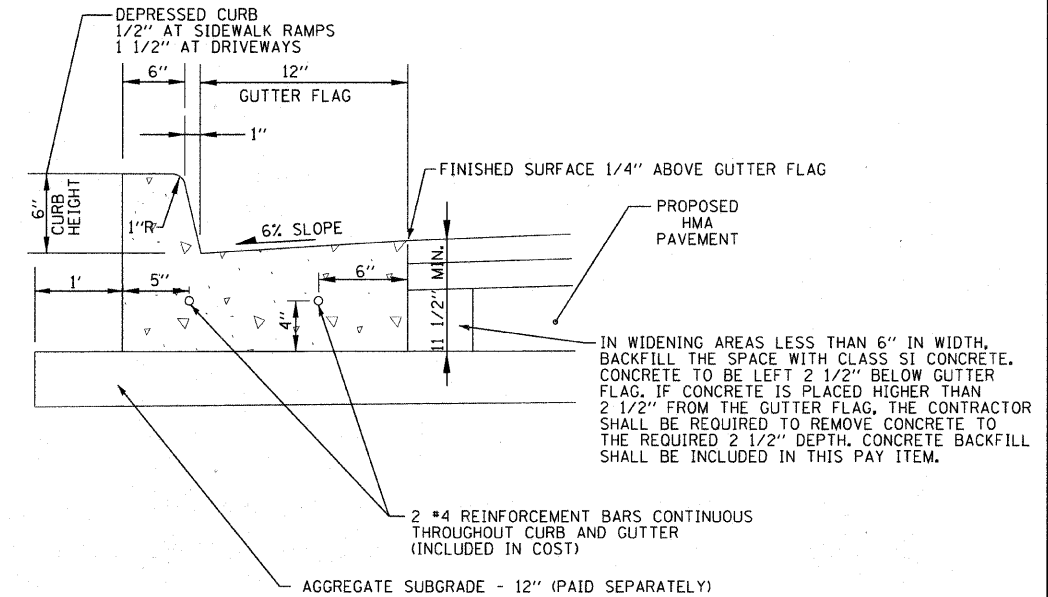


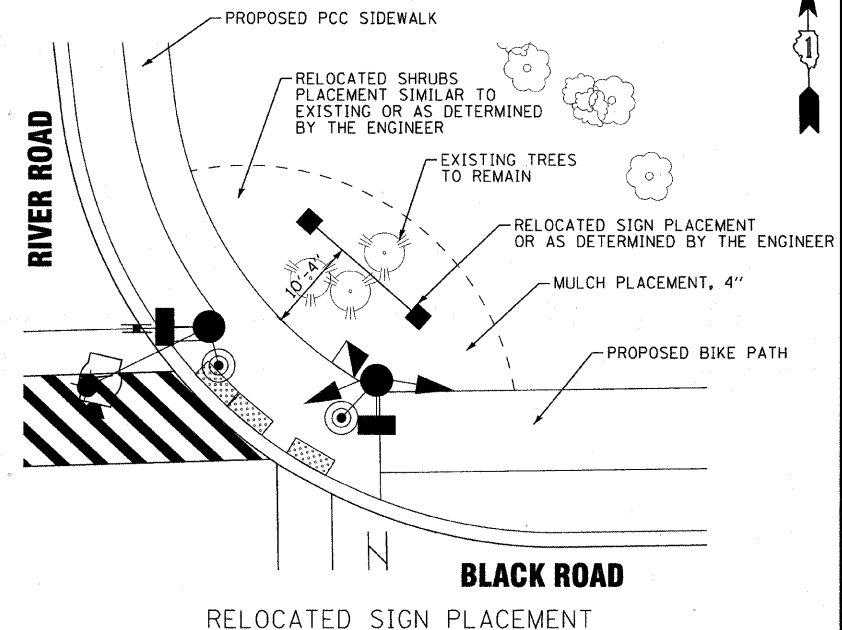
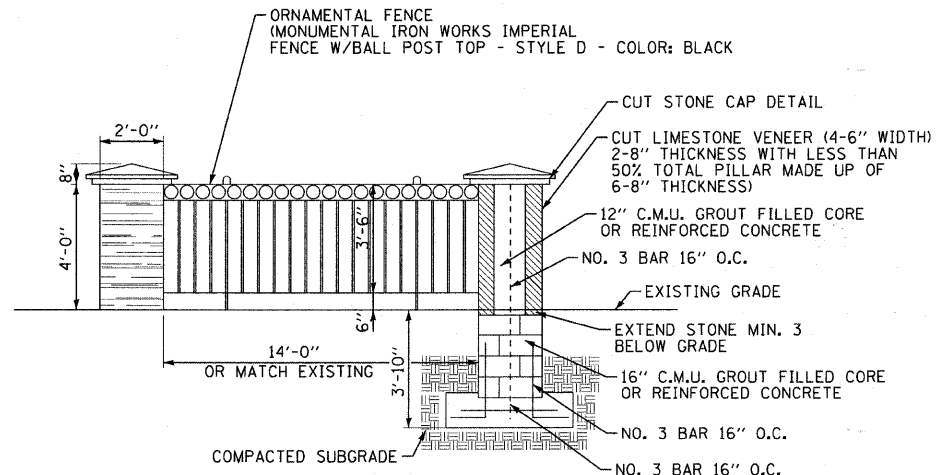
GENERAL NOTES:  
 FRAME: TOP RING CONSTRUCTED FROM 1 1/4" X 1 1/4" X 1/8" ANGLE. BASE RING CONSTRUCTED OF 1 1/2" X 1/2" X 1/8" CHANNEL. HANDLES & SUSPENSION BRACKETS CONSTRUCTED FROM 1/4" X 1 1/4" FLAT. ALL STEEL CONFORMING TO ASTM-A36.  
 REPLACEABLE BAG: CONSTRUCTED FROM 4 OZ./SQ. YD. NON-WOVEN POLYPROPYLENE GEOTEXTILE REINFORCED WITH POLYESTER MESH. CONNECTED TO BASE RING WITH STAINLESS STEEL STRAP & LOCK.



**INLET FILTER**  
NO SCALE



- NOTES:  
 1. ALL BOLTS & NUTS BELOW GRADE ON FIRE HYDRANT SHALL BE STAINLESS STEEL.  
 2. ALL BOLTS & NUTS ON AUXILIARY VALVE SEAL PLATE AND BONNET SHALL BE STAINLESS STEEL.  
 3. THRUST BLOCKING SHALL BE CONSTRUCTED SO HYDRANT DRAIN HOLE IS NOT OBSTRUCTED.  
 4. HYDRANT SHALL BE PAINTED ACE BRAND RUST STOP SAFETY RED.



COPYRIGHT © 2009 BY BAXTER & WOODMAN, INC.  
 STATE OF ILLINOIS - PROFESSIONAL DESIGN FIRM  
 LICENSE NO. - 064-00021 - EXPIRES 4/30/2011  
 2/2/2011 8:26:28 PM  
 ...\\PLOT5\09049-PH2-DET-5.dwg  
 ...\\PLOT5\09049-PH2-DET-5.dwg  
 ...\\PLOT5\09049-PH2-DET-5.dwg



DESIGNED - DSH	REVISED - 1-19-11 PER VILLAGE
DRAWN - CJC	REVISED - 1-31-11 PER IDOT
CHECKED - LDH	REVISED -
DATE - 12/6/10	FILE - 090491-PH2-DETS.shd

**VILLAGE OF SHOREWOOD, ILLINOIS  
 BLACK ROAD & RIVER ROAD  
 INTERSECTION IMPROVEMENT**

SCALE: NONE		STA.	TO STA.
-------------	--	------	---------

**MISCELLANEOUS DETAILS**

F.A.U. RTE. 0398 0398	SECTION 09-00028-00-CH	COUNTY WILL	TOTAL SHEETS 63	SHEET NO. 49
C-91-726-09		CONTRACT NO. 63562		
FED. ROAD DIST. NO. 1   ILLINOIS FED. AID PROJECT M-9003(385)				