

GENERAL NOTES

ALL WORK SHALL BE IN ACCORDANCE WITH THE "STANDARD SPECIFICATIONS FOR ROAD AND BRIDGE CONSTRUCTION," ADOPTED JANUARY 1, 2007, (HEREINAFTER REFERRED TO AS THE STANDARD SPECIFICATIONS); THE "SUPPLEMENTAL SPECIFICATIONS AND RECURRING SPECIAL PROVISIONS," ADOPTED JANUARY 1, 2011; THE LATEST EDITION OF THE "ILLINOIS MANUAL ON UNIFORM TRAFFIC CONTROL DEVICES FOR STREETS AND HIGHWAYS"; THE DETAILS IN THE PLANS AND THE SPECIAL PROVISIONS INCLUDED IN THE CONTRACT DOCUMENTS.

ANY REFERENCE TO STANDARDS THROUGHOUT THE PLANS OR SPECIAL PROVISIONS SHALL BE INTERPRETED AS THE LATEST STANDARD OF THE ILLINOIS DEPARTMENT OF TRANSPORTATION.

THE CONTRACTOR SHALL COOPERATE WITH THE CITY OF WOODSTOCK IF ANY MUNICIPAL UTILITY IMPROVEMENTS ARE REQUIRED WITHIN THE DURATION OF THE CONTRACT.

THE CONTRACTOR SHALL BE RESPONSIBLE FOR CONTACTING THE OWNERS OF ALL UTILITIES PRIOR TO CONSTRUCTION TO DETERMINE THE LOCATION OF ALL UTILITY EQUIPMENT. THE CONTRACTOR SHALL COOPERATE WITH ALL UTILITY OWNERS AS PROVIDED FOR IN THE STANDARD SPECIFICATIONS IF UTILITY RELOCATION, ADJUSTMENT OR PROTECTION IS NECESSARY.

THE LOCATION ON THE PLANS OF EXISTING DRAINAGE STRUCTURES, STORM SEWERS, WATER MAINS, SANITARY SEWERS, AND ANY OTHER PUBLIC AND PRIVATE UTILITIES IS APPROXIMATE AND THEIR EXACT LOCATIONS ARE TO BE DETERMINED IN THE FIELD BY THE CONTRACTOR AT THE CONTRACTOR'S EXPENSE.

THE CONTRACTOR SHALL BE RESPONSIBLE FOR THE PROTECTION OF ALL UNDERGROUND OR SURFACE UTILITIES EVEN THOUGH THEY MAY NOT BE SHOWN ON THE PLANS. ANY UTILITY THAT IS DAMAGED DURING CONSTRUCTION SHALL BE REPAIRED OR REPLACED TO THE SATISFACTION OF THE OWNER AT THE CONTRACTOR'S EXPENSE.

THE CONTRACTOR SHALL PROTECT AND CAREFULLY PRESERVE ALL SECTION OR SUBSECTION MONUMENTS, PROPERTY CORNERS AND REFERENCE MARKERS UNTIL THE OWNER, HIS AGENT OR A PROFESSIONAL LAND SURVEYOR HAS WITNESSED OR OTHERWISE REFERENCED THEIR LOCATIONS.

ALL ELEVATIONS ARE ON AN ASSUMED LOCAL DATUM.

WHENEVER ANY LOOSE MATERIAL IS DEPOSITED IN THE FLOW LINE OF DRAINAGE STRUCTURES SUCH THAT THE NATURAL FLOW OF WATER IS OBSTRUCTED, THE MATERIAL SHALL BE REMOVED AT THE CLOSE OF EACH WORKING DAY. PRIOR TO ACCEPTANCE OF THE IMPROVEMENT, ALL DRAINAGE STRUCTURES SHALL BE FREE OF DIRT AND DEBRIS. THIS WORK WILL NOT BE PAID FOR SEPARATELY BUT SHALL BE INCLUDED IN THE COST OF THE CONTRACT.

WHEN EXISTING DRAINAGE FACILITIES ARE DISTURBED, THE CONTRACTOR SHALL PROVIDE AND MAINTAIN IN AN OPERATING CONDITION TEMPORARY OUTLETS AND CONNECTIONS FOR ALL DRAINS, SEWERS AND CATCH BASINS. THIS WORK WILL NOT BE PAID FOR SEPARATELY, BUT SHALL BE INCLUDED IN THE COST OF THE CONTRACT.

THE CONTRACTOR SHALL BE SOLELY RESPONSIBLE FOR HIS WORK. ANY WORK THAT IS VANDALIZED OR OTHERWISE DAMAGED AND JUDGED UNACCEPTABLE BY THE CITY SHALL BE REMOVED AND REPLACED AT THE CONTRACTOR'S EXPENSE.

FORTY-EIGHT HOURS BEFORE STARTING EXCAVATION, THE CONTRACTOR WILL CALL J.U.L.I.E. (1-800-892-0123) TO HAVE THE LOCATION OF EXISTING UTILITIES STAKED.

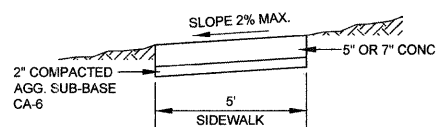
HOT-MIX ASPHALT MIXTURE REQUIREMENTS	
MIXTURE TYPE	AIR VOIDS
DRIVEWAYS	
HMA SURFACE COURSE, MIX C, N50 (IL 9.5mm), 2"	4% @ 50 GYR.
HMA BASE COURSE (HMA BINDER IL-19.0), 2"	4% @ 50 GYR.
SHOULDERS	
HMA SURFACE COURSE, MIX C, N50 (IL 9.5mm), 2"	4% @ 50 GYR.
HMA BASE COURSE (HMA BINDER IL-19.0), 4"	4% @ 50 GYR.

THE UNIT WEIGHT USED TO CALCULATE ALL HMA SURFACE MIXTURE QUANTITIES IS 112 LBS/SQ YD/IN.

THE "AC TYPE" FOR POLYMERIZED HMA MIXES SHALL BE SBS/SBR 70-22 AND FOR NON-POLYMERIZED HMA, THE "AC TYPE" SHALL BE PG 64-22 UNLESS MODIFIED BY DISTRICT ONE SPECIAL PROVISIONS.

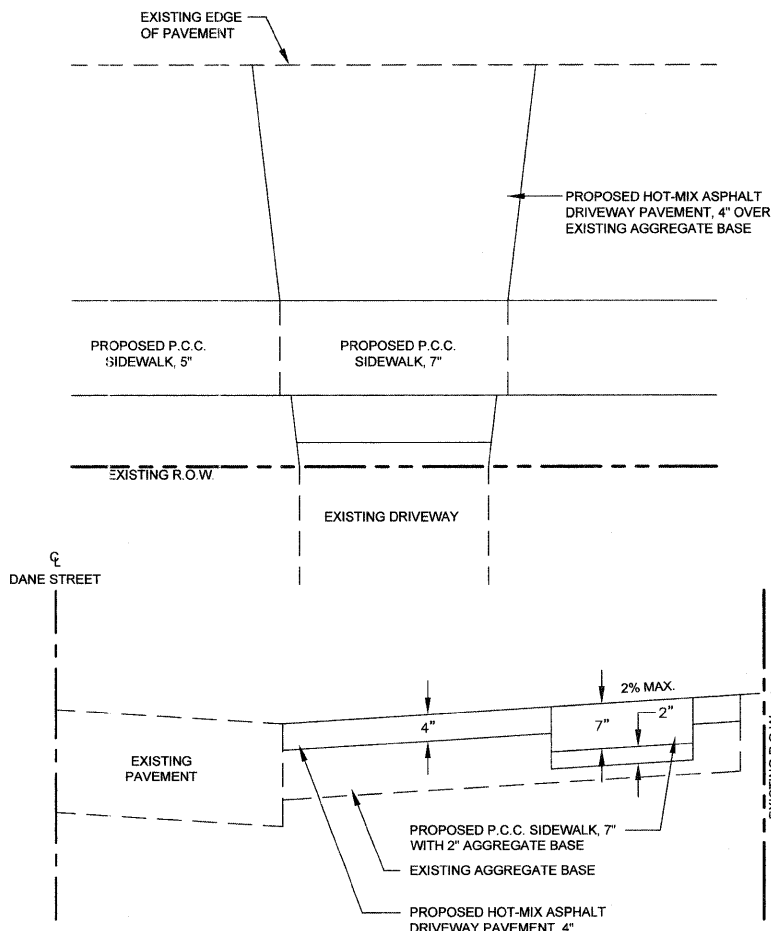
FOR PERCENT OF RAP, SEE DISTRICT ONE SPECIAL PROVISIONS.

SIDEWALK DETAIL

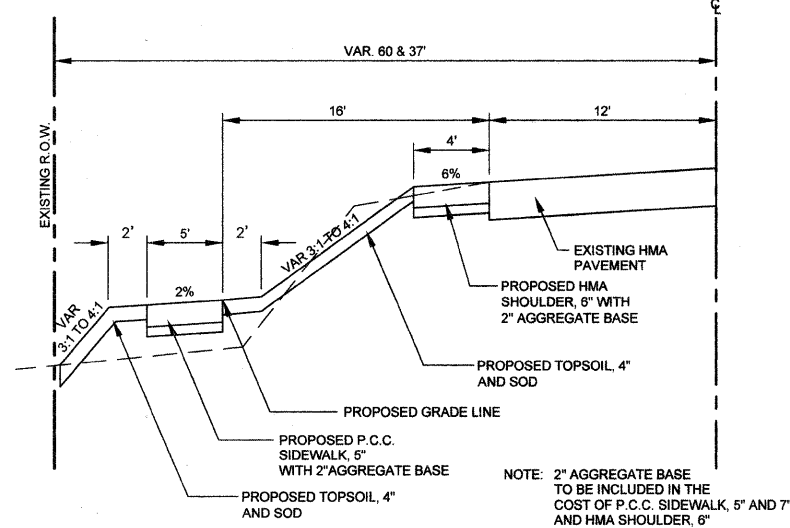


- NOTES:**
- CONCRETE SHALL BE IDOT CLASS S1.
 - MINIMUM SIDEWALK THICKNESS SHALL BE 5".
 - SIDEWALK THICKNESS ACROSS DRIVEWAYS SHALL BE MINIMUM 7" FOR RESIDENTIAL DRIVEWAYS.
 - MAXIMUM LONGITUDINAL SLOPE SHALL NOT EXCEED 6%.
 - MAXIMUM TRANSVERSE SLOPE SHALL BE (2%).
 - A MINIMUM TWO (2) INCH AGGREGATE SUB-BASE (CA-6) SHALL BE PROVIDED.
 - AGGREGATE SUB-BASE COURSE SHALL BE MECHANICALLY COMPACTED.
 - ALL SIDEWALKS SHALL BE PROMPTLY BACKFILLED AND PROTECTED FROM DAMAGE.

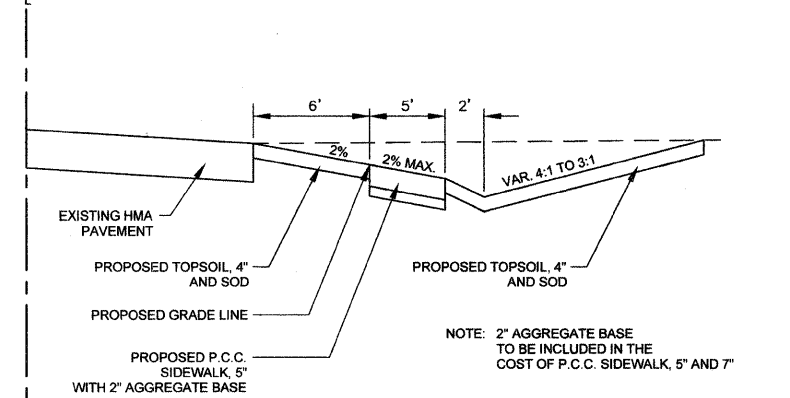
DRIVEWAY DETAIL



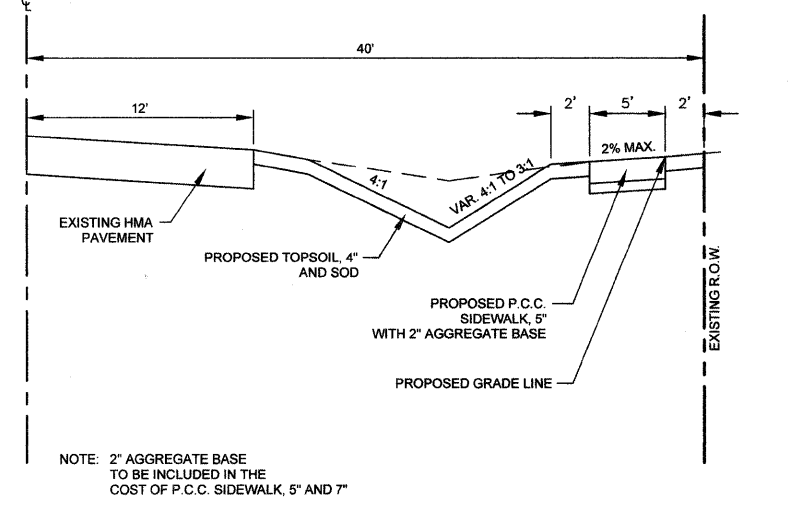
**SOUTH STREET
PROPOSED TYPICAL SECTION**
NOT TO SCALE
STA. 37+30 TO STA. 42+83



**SCHOOL PARKING LOT
PROPOSED TYPICAL SECTION**
NOT TO SCALE
STA. 100+65 TO STA. 102+00

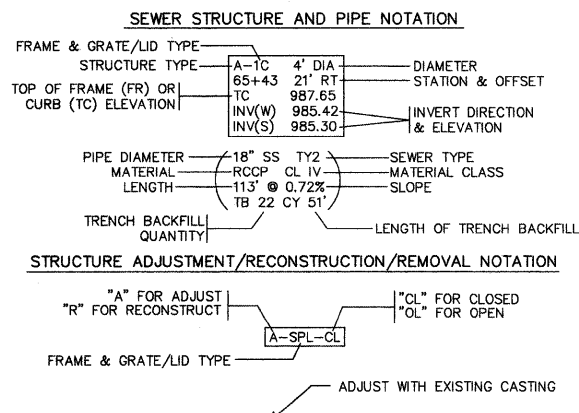


**DANE STREET
PROPOSED TYPICAL SECTION**
NOT TO SCALE
STA. 9+18 TO STA. 18+76



LEGEND

- EXISTING BUSH
- EXISTING DECIDUOUS TREE
- STREET ADDRESS
- EXISTING DRAINAGE MANHOLE
- PROPOSED DRAINAGE MANHOLE
- PROPOSED CATCH BASIN
- PROPOSED INLET
- EXISTING STORM SEWER
- PROPOSED STORM SEWER
- EXISTING UNDERGROUND GAS
- EXISTING LIGHT STANDARD
- EXISTING HANDHOLE
- MAIL BOX
- EXISTING POWER POLE
- DEPRESSED CURB
- BITUMINOUS SURFACE REMOVAL
- PAVEMENT REMOVAL AND REPLACEMENT
- CURB AND GUTTER REMOVAL
- SIDEWALK REMOVAL
- DETECTABLE WARNINGS
- DRIVEWAY PAVEMENT REMOVAL



P:\2010\100180\cad\Phase 2\dwg\100180-Sht-Cover.dwg
 Apr 07, 2011 at 11:14
 Layout: 02-Note, Login Name: steves

FILE NAME =	USER NAME =	DESIGNED -- DAY	REVISED -- 9-20-10
P:\2010\100180\cad\Phase 2\dwg\100180-Sht-Cover.dwg		DRAWN -- AC	REVISED -- 2-3-11
Apr 07, 2011 at 11:14		CHECKED -- MAS	REVISED -- 3-11-11
Layout: 02-Note		DATE -- 9-20-10	REVISED -- 4-6-11

**STATE OF ILLINOIS
DEPARTMENT OF TRANSPORTATION**



**WOODSTOCK SAFE ROUTES
GENERAL NOTES & TYPICAL SECTIONS**

SCALE: SHEET NO. OF SHEETS STA. 14+00 TO STA. 18+75.63

F.A.U. RTE.	SECTION	COUNTY	TOTAL SHEETS	SHEET NO.
033	10-00111-00-SW	MCHENRY	19	2
FED. ROAD DIST. NO.		ILLINOIS FED. AID PROJECT	CONTRACT NO. 63565	