

F.A.U. RTE.	SECTION	COUNTY	TOTAL SHEETS	SHEET NO.
0330	08-00413-00-BR	WILL	32	1
WHA# 1201D10		CONTRACT NO. 63571		
ILLINOIS FED. AID PROJECT BRS-9003(162)				

PROGRAM AND OFFICE ENGINEER: CHARLES F. RIDDLE, P.E. 847-705-4406 SCHAUMBURG, IL

INDEX OF SHEETS

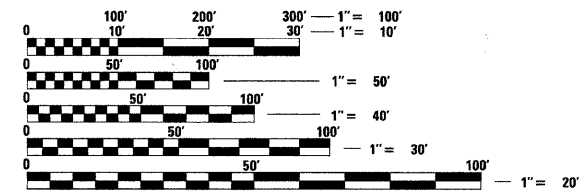
1	COVER SHEET
2	GENERAL NOTES
3	SUMMARY OF QUANTITIES
4	TYPICAL SECTIONS
5-7	SCHEDULE OF QUANTITIES
8	PLAN AND PROFILE
9	DETOUR SIGNING
10-11	STAGING PEDESTRIAN CONTROL
12-13	EROSION CONTROL PLAN
14	WATERMAIN PLAN AND PROFILE
15-25	STRUCTURAL DETAILS
26	DISTRICT ONE DETAIL TC-21
27-28	INLETS, SPECIAL DETAILS
29	WATERMAIN DETAILS
30-32	CROSS SECTIONS - BARNEY DRIVE
33	CROSS SECTIONS - TRIBUTARY OF ROCK RUN

STANDARDS

000001-06	STANDARD SYMBOLS, ABBREVIATIONS, AND PATTERNS
001001-02	AREAS OF REINFORCEMENT BARS
280001-05	TEMPORARY EROSION CONTROL SYSTEMS
285001-02	FABRIC FORMED CONCRETE REVETMENT MATS
424001-05	CURB RAMP FOR SIDEWALKS
515001-03	NAME PLATE FOR BRIDGES
602401-03	MANHOLE TYPE A
602701-02	MANHOLE STEPS
604001-03	FRAME AND LIDS TYPE 1
606001-04	CONCRETE CURB TYPE B AND COMBINATION CONCRETE CURB AND GUTTER
664001-02	CHAIN LINK FENCE
701006-03	OFF-ROAD OPERATIONS, 2L, 2W, 15' TO 24" FROM PAVEMENT EDGE
701801-04	LANE CLOSURE MULTILANE 1W OR 2W CROSSWALK OR SIDEWALK CLOSURE
701901-01	TRAFFIC CONTROL DEVICES
720011-01	METAL POSTS FOR SIGNS, MARKERS & DELINEATORS
728001-01	TELESCOPING STEEL SIGN SUPPORT
729011-01	APPLICATIONS OF TYPES A & B METAL POSTS (FOR SIGNS & MARKERS)
780001-02	TYPICAL PAVEMENT MARKINGS

DESIGN DESIGNATION

DESIGN SPEED: 40 MPH POSTED SPEED: 30 MPH			
FUNCTIONAL CLASSIFICATION	ROUTE	ADT (2031)	% TRUCKS
COLLECTOR	BARNEY DRIVE	5440	8



FULL SIZE PLANS HAVE BEEN PREPARED USING STANDARD ENGINEERING SCALES. REDUCED SIZED PLANS WILL NOT CONFORM TO STANDARD SCALES. IN MAKING MEASUREMENTS ON REDUCED PLANS, THE ABOVE SCALES MAY BE USED.

J.U.L.I.E.
JOINT UTILITY LOCATION INFORMATION FOR EXCAVATION
1-800-892-0123
OR 811

CONTRACT NO. 63571

STATE OF ILLINOIS
DEPARTMENT OF TRANSPORTATION
DIVISION OF HIGHWAYS

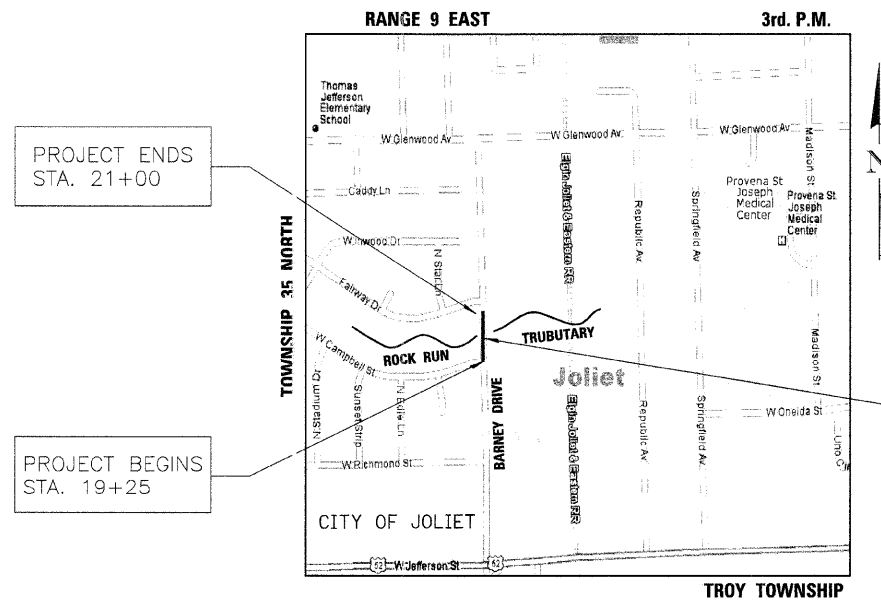
PLANS FOR PROPOSED
FEDERAL AID HIGHWAY

F.A.U. ROUTE 0330 (BARNEY DRIVE)
OVER ROCK RUN TRIBUTARY NO. 3
BRIDGE REPLACEMENT
SECTION 08-00413-00-BR
PROJECT NO. BRS-9003(162)
COUNTY OF WILL
CITY OF JOLIET

C-91-174-09



LOCATION MAP



PROJECT ENDS
STA. 21+00

PROJECT BEGINS
STA. 19+25

PROPOSED STRUCTURE
S.N. 099-6474 DOUBLE BARREL
(10'-0" X 5'-6") REINFORCED
CONCRETE BOX CULVERT
AT STATION 20+00. SKEWED 35'
RIGHT AHEAD

GROSS LENGTH = 175 FT. = 0.03 MILE
NET LENGTH = 175 FT. = 0.03 MILE

STATE OF ILLINOIS DEPARTMENT OF TRANSPORTATION
DIVISION OF HIGHWAYS

APPROVED 3/22/11 2011
James J. Jans
CITY OF JOLIET, DIRECTOR OF PUBLIC WORKS

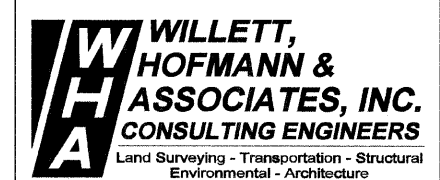
PASSED APRIL 11 2011
CHC *Chas. H. C. Heston*
DISTRICT ENGINEER OF LOCAL ROADS & STREETS

RELEASING FOR BID
BASED ON LIMITED
REVIEW APRIL 11, 2011
Diana M. O'Keefe
DEPUTY DIRECTOR OF HIGHWAYS, REGION I ENGINEER

PRINTED BY THE AUTHORITY
OF THE STATE OF ILLINOIS



Brian K. Conner
DATE: March 24, 2011
EXPIRES 11/30/11



Land Surveying - Transportation - Structural
Environmental - Architecture
809 East Second Street Dixon, Illinois 61021
Phone 815.284.3381 Fax 815.284.3385
Design Firm #184-000918
www.willetthofmann.com