

FILE NAME = S:\PROJECTS\2010\1201D10\BarneyDrivePH1\DESIGN\TRANS\Distrc1.ctb\Detail-TC-21.dgn

ROUTE MARKERS

FOR U.S. ROUTES
MI-40-2424

FOR ILLINOIS ROUTES
MI-50-2424

R.R. UNMARKED ROUTES
SPECIAL 24" x 18" VARIABLE
4" BLACK LETTERS ON WHITE
REFLECTIVE BACKGROUND

ARROWS SIGNS

M5-1L-2115

M5-1R-2115

M6-1-2115

M6-1-2115

M6-3-2115

CARDINAL DIRECTION & DETOUR SIGNS

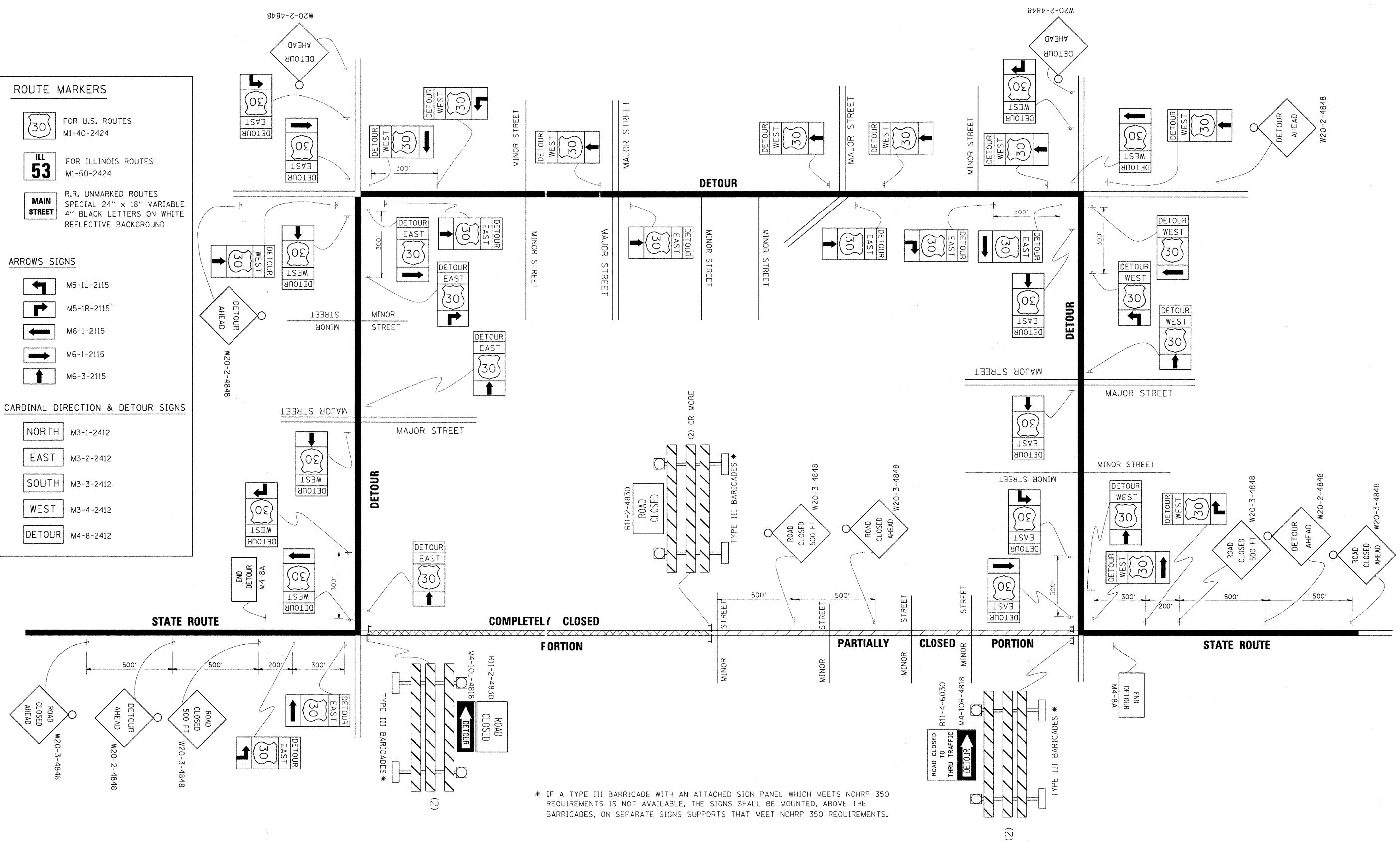
NORTH M3-1-2412

EAST M3-2-2412

SOUTH M3-3-2412

WEST M3-4-2412

DETOUR M4-8-2412



* IF A TYPE III BARRICADE WITH AN ATTACHED SIGN PANEL WHICH MEETS NCHRP 350 REQUIREMENTS IS NOT AVAILABLE, THE SIGNS SHALL BE MOUNTED, ABOVE THE BARRICADES, ON SEPARATE SIGNS SUPPORTS THAT MEET NCHRP 350 REQUIREMENTS.

USER NAME =	DESIGNED - PETER PASCUA	REVISED -
PLOT SCALE =	CHECKED - BRIAN CONVERSE	REVISED -
PLOT DATE =	DRAWN - RON ALLEN	REVISED -
	CHECKED - BRIAN CONVERSE	REVISED -

ILLINOIS DEPARTMENT OF TRANSPORTATION
BARNEY DRIVE OVER TRIBUTARY OF ROCK RUN
STATION 20 + 00

DISTRICT ONE DETAIL TC-21
STRUCTURE NO. 099-6474

F.A.U. RTE.	SECTION	COUNTY	TOTAL SHEETS	SHEET NO.
0330	08-00413-00-BR	WILL	33	26
WHA# 1201D10			CONTRACT NO. 63571	
[ILLINOIS] FED. AID PROJECT BRM-90031621				