

STATE OF ILLINOIS
DEPARTMENT OF TRANSPORTATION
DIVISION OF HIGHWAYS

PLANS FOR PROPOSED FEDERAL AID HIGHWAY

F. A. I. D. NO.	SECTION	COUNTY	TOTAL SHEETS	SHEET NO.
2404	11-00026-00-RS	COOK	10	1
STA.	TO STA.			
FED. ROAD DIST. NO.	ILLINOIS	FED. AID PROJECT NO.	M-9003(775)	

CONTRACT #63574

INDEX OF SHEETS

1. COVER SHEET, INDEX OF SHEETS & STATE STANDARDS
2. SUMMARY OF QUANTITIES & GENERAL NOTES
3. TYPICAL CROSS SECTIONS
4. PAVEMENT PLAN
5. STRIPING PLAN
- 6.-10. IDOT DISTRICT 1 STANDARD DETAILS

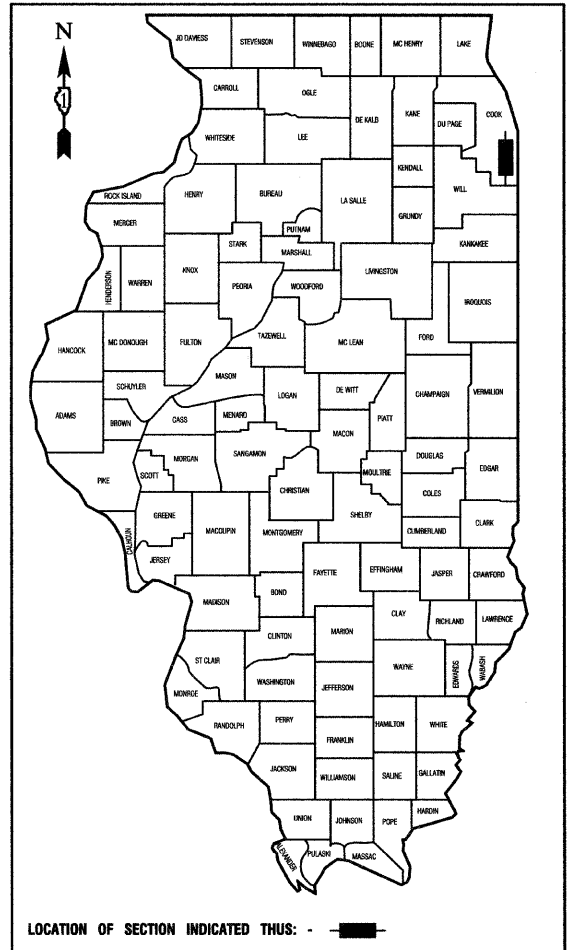
HIGHWAY STANDARDS

- | | |
|-----------|--|
| 000001-06 | STANDARD SYMBOLS, ABBREVIATIONS AND PATTERNS |
| 424001-05 | CURB RAMPS FOR SIDEWALKS |
| 442201-03 | CLASS C AND D PATCHES |
| 606001-04 | CONCRETE CURB TYPE B AND COMBINATION CONCRETE CURB AND GUTTER |
| 701501-06 | URBAN LANE CLOSURE, 2L, 2W, UNDIVIDED |
| 701801-04 | LANE CLOSURE, MULTILANE 1W OR 2W CROSSWALK OR SIDEWALK CLOSURE |
| 701901-01 | TRAFFIC CONTROL DEVICES |
| 780001-02 | TYPICAL PAVEMENT MARKINGS |

**FAU-2404 (KOSTNER AVENUE)
147TH STREET TO 143RD STREET
RESURFACING
SECTION NO.: 11-00026-00-RS
PROJECT NO.: M-9003(775)
VILLAGE of MIDLOTHIAN
COOK COUNTY
JOB NO. C-91-365-11**

RANGE 13 E 3RD PM

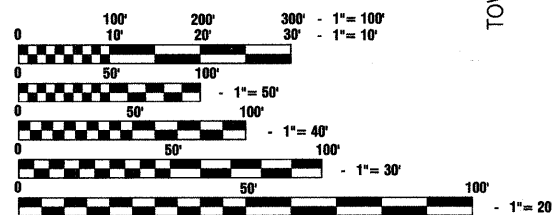
PROJECT LOCATED
IN VILLAGE OF
MIDLOTHIAN



KOSTNER AVENUE
ADT=2,800 (2009)
=2,900 (2030)
DESIGN SPEED=25 MPH
POSTED SPEED LIMIT=20 MPH
DESIGN DESIGNATION=URBAN COLLECTOR

SCALES

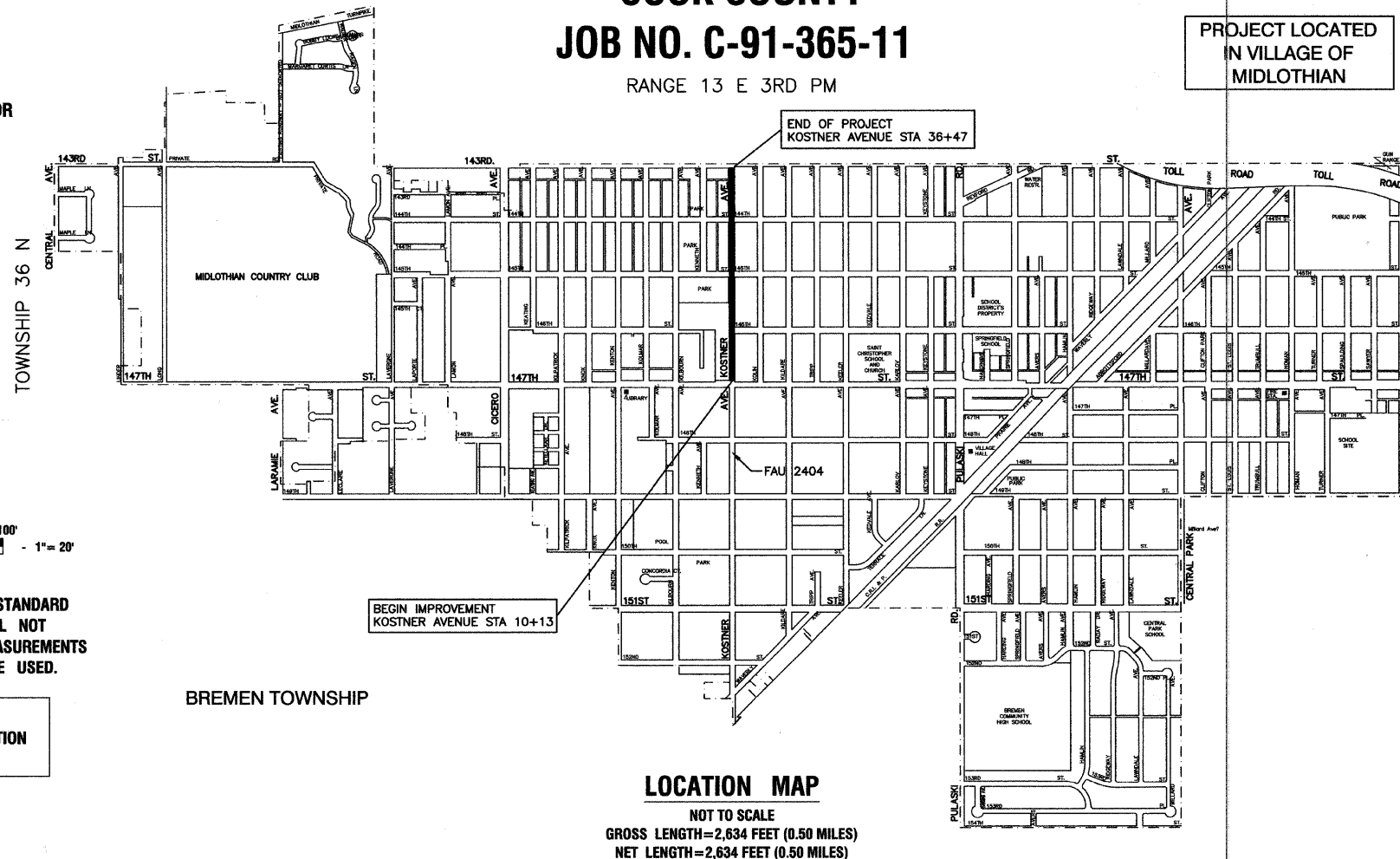
- PLAN - 1"=50'
- PROFILE HORIZ. - 1"=50'
- PROFILE VERT. - 1"=5'
- CROSS SECTIONS - 1"=10'



FULL SIZE PLANS HAVE BEEN PREPARED USING STANDARD ENGINEERING SCALES, REDUCED SIZED PLANS WILL NOT CONFORM TO STANDARD SCALES, IN MAKING MEASUREMENTS ON REDUCED PLANS, THE ABOVE SCALES MAY BE USED.

J. U. L. I. E.
JOINT UTILITY LOCATION INFORMATION FOR EXCAVATION
1 - 800 - 892 - 0123 or 811

CONTRACT NO. 63574



PROGRAM OFFICE ENGINEER: CHARLES F. RIDDLE P.E. 847-705-4406 SCHAUMBURG, IL
CONSULTANTS: ROBINSON ENGINEERING, LTD. 708-331-6700

STATE OF ILLINOIS DEPARTMENT OF TRANSPORTATION
DIVISION OF HIGHWAYS

Approved: 3/18/2011
Tamara M. Stephens
President, Village of Midlothian

Passed: APRIL 11, 2011
Chris Hester/Holt
District 1 Engineer of Local Roads & Streets

Released for Bid Based on Limited Review: APRIL 11, 2011
Diana M. O'Keefe
Deputy Director of Highways, Region 1 Engineer

PRINTED BY THE AUTHORITY OF
THE STATE OF ILLINOIS

PREPARED BY OR UNDER THE DIRECT SUPERVISION OF:
Patricia A. Barber
3/18/2011

PATRICIA A. BARBER
62-51255
REGISTERED
PROFESSIONAL
ENGINEER
STATE OF ILLINOIS
LICENSE EXPIRES: 11/30/11

SUMMARY OF QUANTITIES					PAVEMENT	
S.I.	CODE NO.	PAY ITEM	UNIT	QUAN	CONSTRUCTION TYPE CODE	
					000 5	
	20101700	SUPPLEMENTAL WATERING	UNIT	2	2	
	25200110	SODDING, SALT TOLERANT	SQ YD	244	244	
	40600100	BITUMINOUS MATERIALS (PRIME COAT)	GALLON	1728	1728	
	40600300	AGGREGATE (PRIME COAT)	TON	17	17	
	40600982	HOT-MIX ASPHALT SURFACE REMOVAL - BUTT JOINT	SQ YD	284	284	
	40603310	HOT-MIX ASPHALT SURFACE COURSE, MIX "C", N50	TON	748	748	
	42300300	PORTLAND CEMENT CONCRETE DRIVEWAY PAVEMENT, 7 INCH	SQ YD	93	93	
	42400200	PORTLAND CEMENT CONCRETE SIDEWALK 5 INCH	SQ FT	330	330	
	42400800	DETECTABLE WARNINGS	SQ FT	96	96	
	44000157	HOT-MIX ASPHALT SURFACE REMOVAL 2"	SQ YD	8619	8619	
	44000200	DRIVEWAY PAVEMENT REMOVAL	SQ YD	149	149	
	44000500	COMBINATION CURB AND GUTTER REMOVAL	FOOT	1141	1141	
	44000600	SIDEWALK REMOVAL	SQ FT	330	330	
	44201725	CLASS D PATCHES, TYPE I, 7 INCH	SQ YD	4	4	
	44201729	CLASS D PATCHES, TYPE II, 7 INCH	SQ YD	71	71	
	44201733	CLASS D PATCHES, TYPE III, 7 INCH	SQ YD	45	45	
	44201735	CLASS D PATCHES, TYPE IV, 7 INCH	SQ YD	38	38	
	60250200	CATCH BASINS TO BE ADJUSTED	EACH	13	13	
	60252800	CATCH BASINS TO BE RECONSTRUCTED	EACH	1	1	
	60266600	VALVE BOXES TO BE ADJUSTED	EACH	6	6	
	60603800	COMBINATION CONCRETE CURB AND GUTTER, TYPE B6.12	FOOT	1141	1141	
	67100100	MOBILIZATION	L SUM	1	1	
	70102620	TRAFFIC CONTROL AND PROTECTION, STANDARD 701501	L SUM	1	1	
	70102640	TRAFFIC CONTROL AND PROTECTION, STANDARD 701801	L SUM	1	1	
	70300100	SHORT-TERM PAVEMENT MARKING	FOOT	468	468	
*	78000200	THERMOPLASTIC PAVEMENT MARKING - LINE 4"	FOOT	650	650	
*	78000400	THERMOPLASTIC PAVEMENT MARKING - LINE 6"	FOOT	228	228	
*	78000650	THERMOPLASTIC PAVEMENT MARKING - LINE 24"	FOOT	140	140	
	X4060826	POLYMERIZED LEVELING BINDER (MACHINE METHOD), IL-4.75, N50	TON	374	374	
	Z0004518	HOT-MIX ASPHALT DRIVEWAY PAVEMENT, 5"	SQ YD	125	125	
	Z0030850	TEMPORARY INFORMATION SIGNING	SQ FT	42	42	
	X6030310	FRAMES AND LIDS TO BE ADJUSTED (SPECIAL)	EACH	2	2	

GENERAL NOTES

- BEFORE STARTING ANY EXCAVATION THE CONTRACTOR SHALL CALL "J.U.L.I.E." AT (800) 892-0123 AND (312) 744-7000 FOR FIELD LOCATIONS OF BURIED ELECTRIC, TELEPHONE AND GAS UTILITIES. (48 HOUR NOTIFICATION REQUIRED)
- UTILITIES INDICATED ON THE PLANS ARE PROVIDED FOR THE CONTRACTORS USE AND ARE BASED UPON INFORMATION AVAILABLE AT THE TIME OF THE ADVERTISEMENT FOR BIDS. THE OWNER AND ENGINEER DO NOT GUARANTEE THE ACCURACY OF UTILITY INFORMATION.
- IT SHALL BE THE CONTRACTOR'S RESPONSIBILITY TO VERIFY ALL DIMENSIONS AND CONDITIONS EXISTING IN THE FIELD PRIOR TO CONSTRUCTION AND ORDERING OF MATERIALS.
- SCHEDULES INCLUDED IN THE PLANS HAVE BEEN PREPARED FROM FIELD NOTES. EXACT LOCATIONS FOR PATCHING SHALL BE DETERMINED IN THE FIELD BY THE ENGINEER.
- THE THICKNESS OF HMA MIXTURE STATED IN THE SPECIFICATIONS IS THE NOMINAL THICKNESS. DEVIATIONS FROM THE NOMINAL THICKNESS WILL BE PERMITTED WHEN SUCH DEVIATIONS OCCUR DUE TO IRREGULARITIES IN THE EXISTING SURFACE OR BASE ON WHICH THE HMA SURFACE IS PLACED.
- ACCESS TO DRIVEWAYS SHALL BE MAINTAINED AT ALL TIMES BY LIMITING CURB AND GUTTER REPAIR TO ONE-HALF THE DRIVEWAY WIDTH AT ONE TIME AS WELL AS TEMPORARY AGGREGATE.
- THE REMOVAL AND/OR REPLACEMENT OF ANY DRIVEWAYS, PAVEMENT, CURB, SIDEWALK, ECT. SHALL BE ACCOMPLISHED BY MEANS OF A SAW CUT JOINT, AT THE DIRECTION OF THE ENGINEER. THIS WORK WILL NOT BE PAID FOR SEPARATELY, BUT SHALL BE INCLUDED IN THE UNIT PRICE FOR THE VARIOUS ITEMS.
- ANY LOOSE MATERIAL DEPOSITED IN THE FLOW LINE OF DITCHES, GUTTERS OR OTHER DRAINAGE STRUCTURES SHALL BE REMOVED BY THE END OF EACH DAY BY THE CONTRACTOR AT THEIR EXPENSE.

* - INDICATES SPECIALTY ITEMS

FILE NAME = 10516-QUAN-01 - 1001 P01

USER NAME =

DESIGNED -- JPH

REVISED --

CHECKED -- PKB

REVISED --

PLOT SCALE =

DRAWN -- RG

REVISED --

PLOT DATE = 03-18-11

CHECKED -- AG

REVISED --

STATE OF ILLINOIS
DEPARTMENT OF TRANSPORTATION

KOSTNER AVENUE RESURFACING
147TH STREET TO 143RD STREET
SUMMARY OF QUANTITIES AND GENERAL NOTES

F.A.U.
RTE.

SECTION

COUNTY

TOTAL SHEETS

SHEET NO.

2404

11-00026-00-RS

COOK

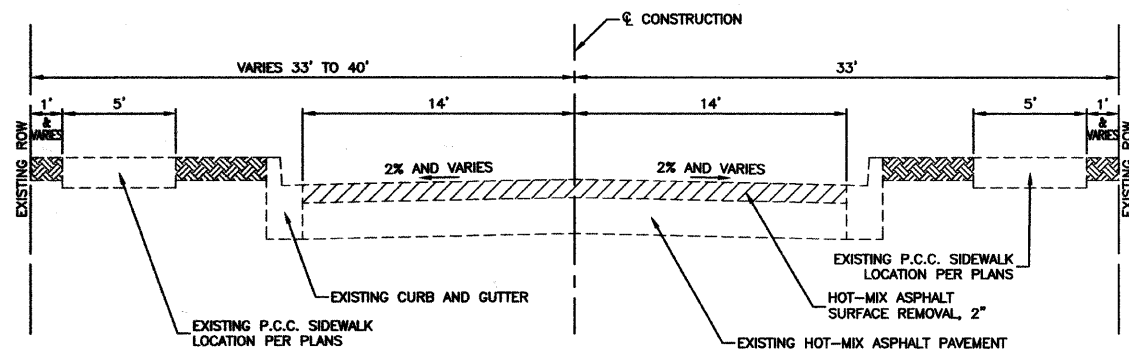
10 2

CONTRACT NO. 63574

SCALE: NA

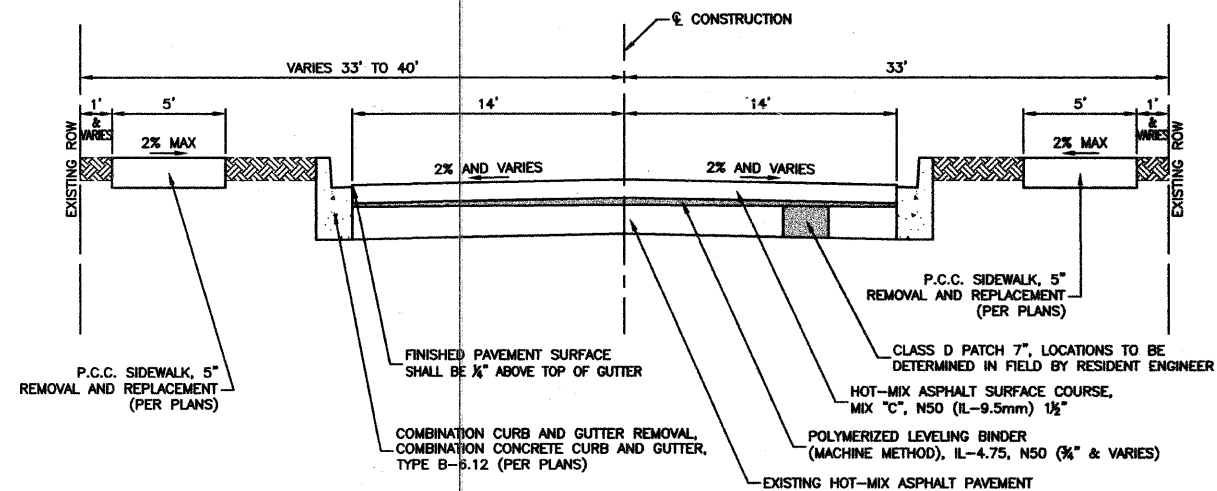
SHEET NO 2 OF 10 SHEETS STA. TO STA.

FED. ROAD DIST. NO. 1 ILLINOIS FED. AID PROJECT M-8003(775)



EXISTING TYPICAL SECTION

KOSTNER AVENUE
147TH STREET TO 143RD STREET
STA 10+13 TO STA 36+47



PROPOSED TYPICAL SECTION

KOSTNER AVENUE
147TH STREET TO 143RD STREET
STA 10+13 TO STA 36+47

NOTE: CONTRACTOR SHALL MILL BEFORE PATCHING

HOT-MIX ASPHALT MIXTURE REQUIREMENTS

MIXTURE TYPE	AIR VOIDS
RESURFACING	
HOT MIX ASPHALT SURFACE COURSE, MIX "C", N50(IL-9.5mm); 1 1/2"	4% @ 50 Gyr.
POLYMERIZED LEVELING BINDER (MACHINE METHOD), IL-4.75, N50, (3/4")	4% @ 50 Gyr.
DRIVEWAYS	
HOT MIX ASPHALT SURFACE COURSE, MIX "C", N50 (IL-9.5mm); 2"	4% @ 50 Gyr.
HOT MIX ASPHALT BASE COURSE, (HMA BINDER IL-19.0mm); 3"	4% @ 50 Gyr.
PATCHING	
CLASS D PATCHES, TYPE I, II, III, IV (HMA BINDER IL-19.0mm), 7" (IN 3 LIFTS)	4% @ 70 Gyr.

NOTES:

- THE UNIT WEIGHT USED TO CALCULATE ALL HOT-MIX ASPHALT SURFACE MIXTURE QUANTITIES IS 112 LBS/SY/IN.
- THE "AC TYPE" FOR POLYMERIZED HMA MIXES SHALL BE "SBS/SBR PG 70-22" AND FOR NON-POLYMERIZED HMA THE "AC" TYPE SHALL BE "PG 64-22" UNLESS MODIFIED BY DISTRICT ONE SPECIAL PROVISIONS. FOR "PERCENT OF RAP" SEE DISTRICT ONE SPECIAL PROVISIONS.

FILE NAME = 10616-TYPX-01 - IDOT P01

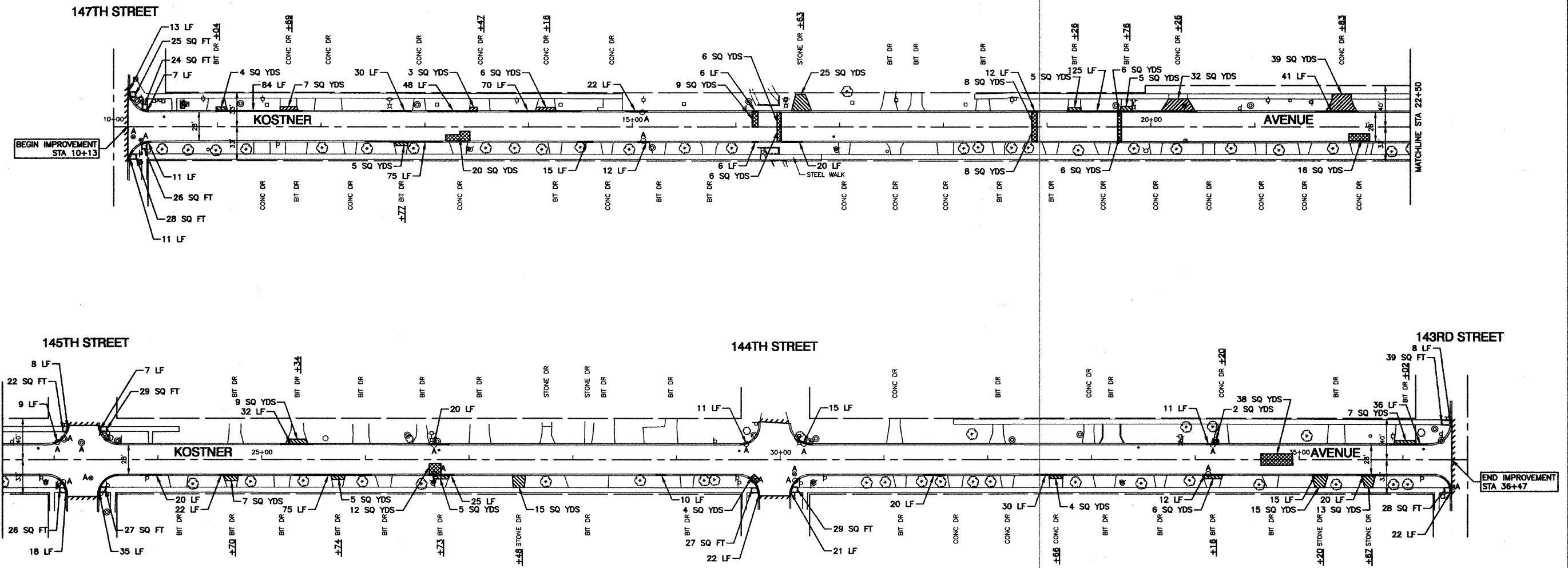
USER NAME =	DESIGNED -- JPH	REVISED --
	CHECKED -- PKB	REVISED --
PLOT SCALE =	DRAWN -- RG	REVISED --
PLOT DATE = 03-18-11	CHECKED -- AG	REVISED --

STATE OF ILLINOIS
DEPARTMENT OF TRANSPORTATION

KOSTNER AVENUE RESURFACING
147TH STREET TO 143RD STREET
TYPICAL CROSS SECTIONS

SCALE: NA SHEET NO. 3 OF 10 SHEETS STA. TO STA.

F.A.U. RTE.	SECTION	COUNTY	TOTAL SHEETS	SHEET NO.
2404	11-00028-00-RS	COOK	10	3
CONTRACT NO. 63574				
FED. ROAD DIST. NO. 1 ILLINOIS FED. AID PROJECT M-6003(775)				



LEGEND

	HMA PAVEMENT REPAIR
	HMA DRIVEWAY REMOVAL AND REPLACEMENT
	CONCRETE DRIVEWAY REMOVAL AND REPLACEMENT
	CONCRETE SIDEWALK REMOVAL AND REPLACEMENT
	BUTT JOINTS
	CURB REMOVAL
	CATCH BASIN TO BE ADJUSTED, FRAME & LID TO BE ADJUSTED SPECIAL, VALVE BOX TO BE ADJUSTED.

- NOTE:**
1. DETECTABLE WARNINGS ARE TO BE INSTALLED AT LOCATIONS OF SIDEWALK REMOVAL AND REPLACEMENT. CONTRACTOR TO POSITION AND PLACE DETECTABLE WARNINGS AT THE DIRECTION OF THE ENGINEER.
 2. LIMIT OF CONSTRUCTION ON ALL SIDE STREETS IS THE RADIUS RETURN PLUS 10' BUTT JOINT OR R.O.W. AS NOTED.
 3. ACCESS TO ALL DRIVEWAYS SHALL BE MAINTAINED UPON COMPLETION OF EACH WORKDAY. RESIDENTS SHALL BE NOTIFIED 24 HOURS IN ADVANCE OF WHEN DRIVEWAY REPLACEMENT WILL TAKE PLACE.

FILE NAME = 10516-PLAN-01 - 1007.P01
USER NAME =
PLOT SCALE =
PLOT DATE = 03-18-11

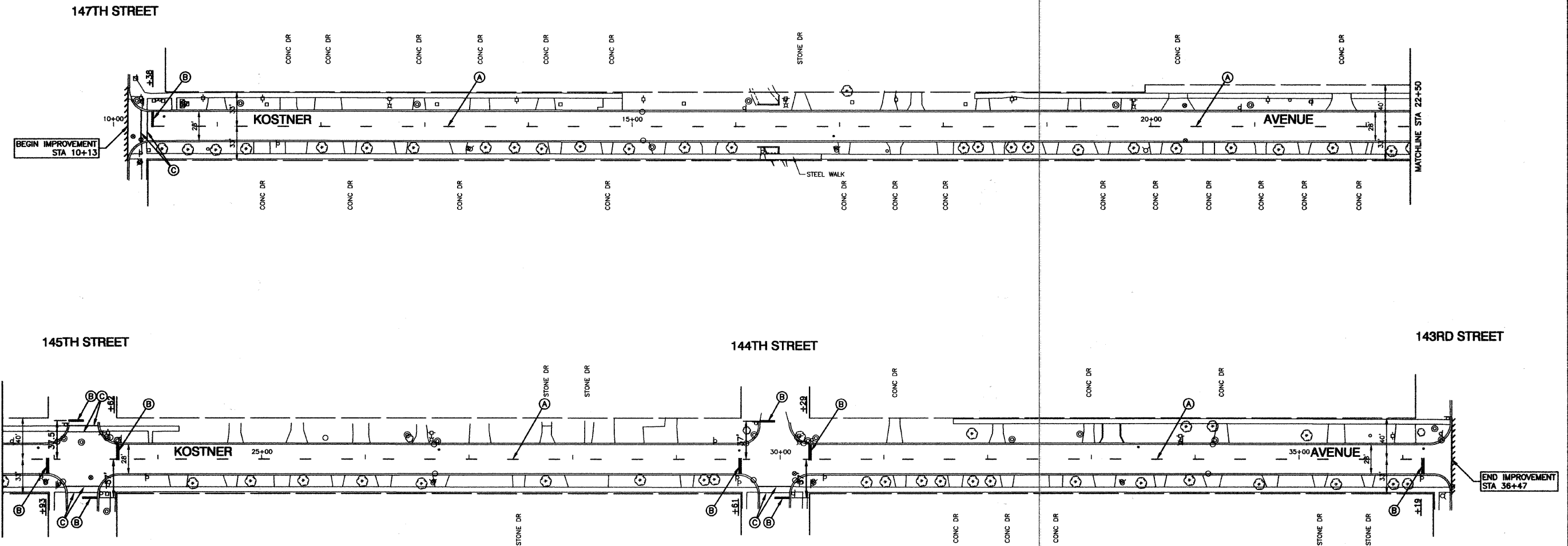
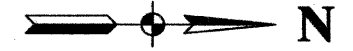
DESIGNED -- JPH	REVISED --
CHECKED -- PKB	REVISED --
DRAWN -- SR / PS	REVISED --
CHECKED -- AG	REVISED --

**STATE OF ILLINOIS
DEPARTMENT OF TRANSPORTATION**

KOSTNER AVENUE RESURFACING 147TH STREET TO 143RD STREET PAVEMENT PLAN			
SCALE: 1"=50'	SHEET NO. 4	OF 10 SHEETS	STA. 10+13 TO STA. 36+47

F.A.U. RTE. 2404	SECTION 11-00026-00-RS	COUNTY COOK	TOTAL SHEETS 10	SHEET NO. 4
CONTRACT NO. 63574				
FED. ROAD DIST. NO. 1 ILLINOIS FED. AID PROJECT M-6003(775)				

SECTION 10, TOWNSHIP 36, RANGE 13



LEGEND

- (A) THERMOPLASTIC PAVEMENT MARKING
YELLOW, 4" SKIP DASH (10' LINE - 30' SPACE)
- (B) THERMOPLASTIC PAVEMENT MARKING
WHITE, 24"
- (C) THERMOPLASTIC PAVEMENT MARKING
WHITE, LINE, 6"

FILE NAME = 10516-PLAN-01 - 1001 P02

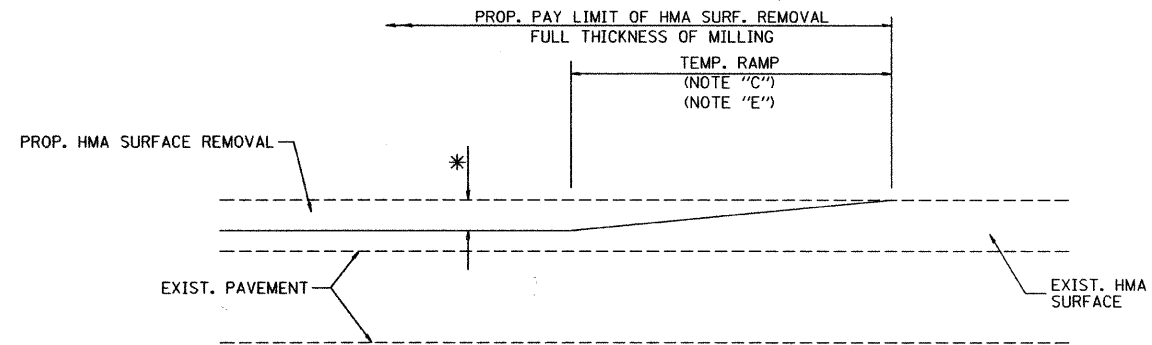
USER NAME =	DESIGNED -- JPH	REVISED --
	CHECKED -- PKB	REVISED --
PLOT SCALE =	DRAWN -- SR / PS	REVISED --
PLOT DATE = 03-18-11	CHECKED -- AG	REVISED --

STATE OF ILLINOIS
DEPARTMENT OF TRANSPORTATION

KOSTNER AVENUE RESURFACING
147TH STREET TO 143RD STREET
PAVEMENT MARKING

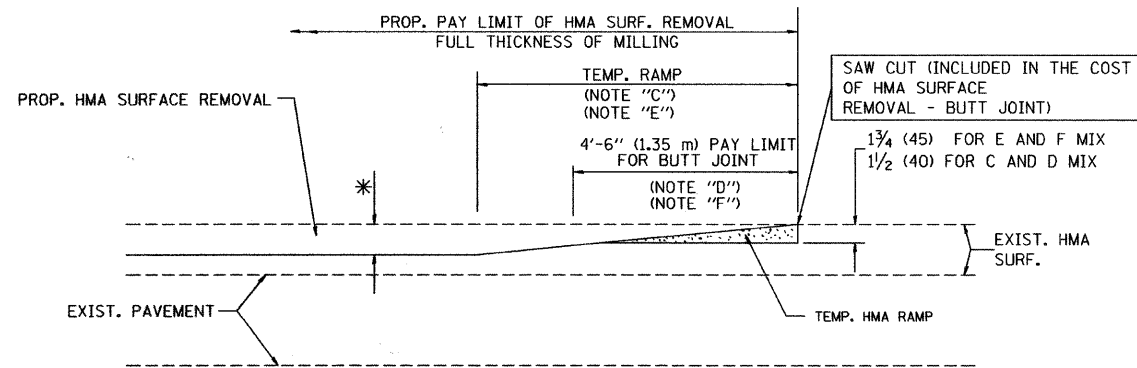
SCALE: 1"=50' SHEET NO. 5 OF 10 SHEETS STA. 10+13 TO STA. 36+47

F.A.U. RTE.	SECTION	COUNTY	TOTAL SHEETS	SHEET NO.
2404	11-00026-00-RS	COOK	10	5
CONTRACT NO. 63574				
FED. ROAD DIST. NO. 1 ILLINOIS FED. AID PROJECT M-9003(778)				



MILLED TEMPORARY RAMP
(FOR BUTT JOINT AND HMA TAPER SEE DETAIL BELOW)

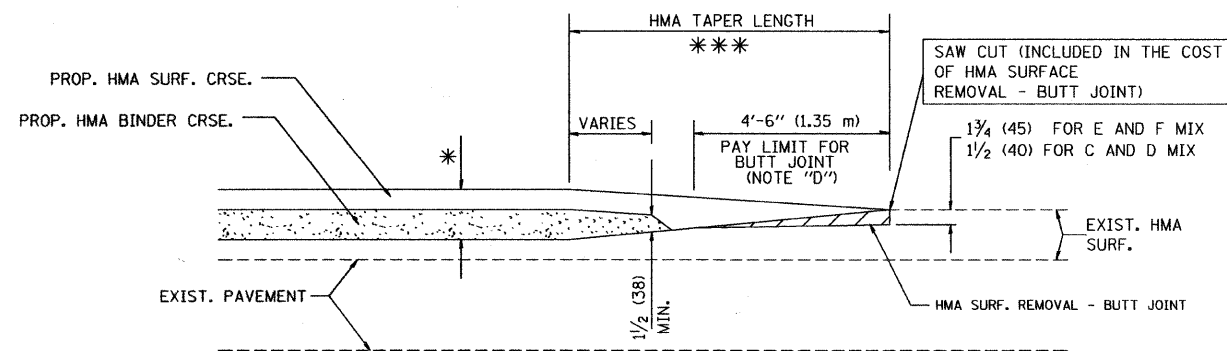
OPTION 1



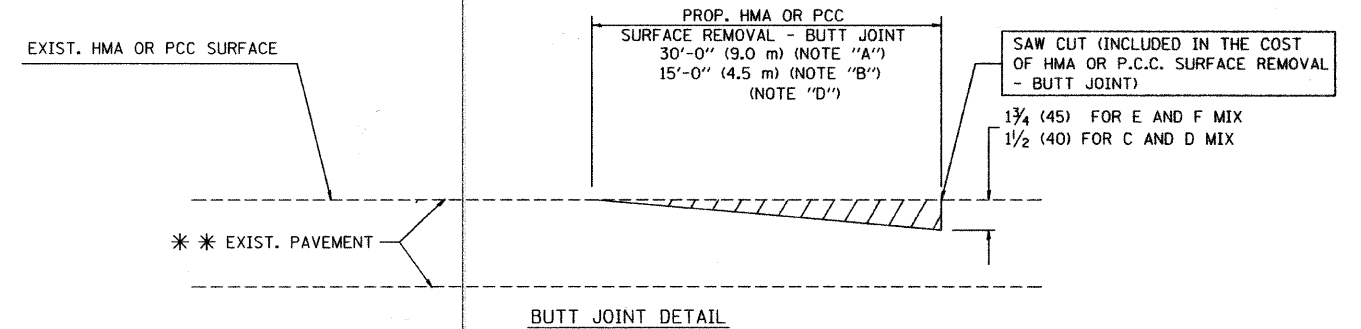
HMA CONSTRUCTED TEMPORARY RAMP
(FOR BUTT JOINT AND HMA TAPER SEE DETAIL BELOW)

OPTION 2

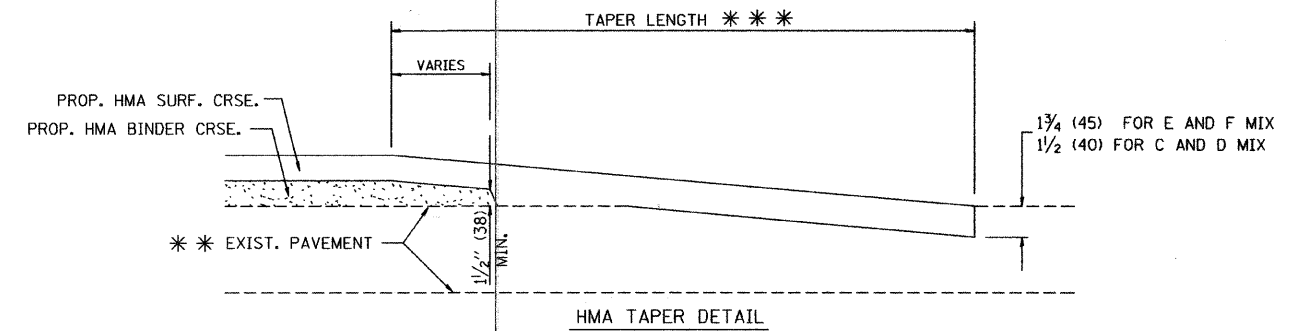
TYPICAL TEMPORARY RAMP



TYPICAL BUTT JOINT AND HMA TAPER
FOR MILLING AND RESURFACING



BUTT JOINT DETAIL



HMA TAPER DETAIL

TYPICAL BUTT JOINT AND HMA TAPER
FOR RESURFACING ONLY

*** PC CONCRETE, HMA OR HMA RESURFACED PAVEMENT.

NOTES

- A: MAINLINE ROADWAYS AND MAJOR SIDE ROADS.
 - B: MINOR SIDE ROADS.
 - C: THE TEMP. RAMP SHALL BE CONSTRUCTED IMMEDIATELY UPON REMOVAL OF THE EXISTING HMA SURFACE.
 - D: THE BUTT JOINT SHALL BE CONSTRUCTED IMMEDIATELY PRIOR TO PLACING THE PROPOSED HMA COURSES.
 - E: TAPER THE TEMP. RAMP AT A RATE OF 3'-0" (900 mm) PER 1 INCH (25 mm) OF MILLING THICKNESS.
 - F: INSTALLATION AND REMOVAL OF THE 4'-6" (1.35 m) TEMP. RAMP IS INCLUDED IN COST OF HMA SURFACE REMOVAL - BUTT JOINT
 - G: SEE ARTICLE 406.08 AND 406.14 OF THE STANDARD SPECIFICATIONS FOR "HMA AND/OR PCC SURFACE REMOVAL, BUTT JOINT".
- * SEE TYPICAL SECTIONS FOR MILLING THICKNESS.

*** 20'-0" (6.1 m) PER 1 (25) RESURFACING (NOTE "A")
10'-0" (3.0 m) PER 1 (25) RESURFACING (NOTE "B")

BASIS OF PAYMENT:

THE BUTT JOINT WILL BE PAID FOR AT THE CONTRACT UNIT PRICE PER SQUARE YARD (SQUARE METER) FOR "HOT-MIX ASPHALT SURFACE REMOVAL - BUTT JOINT" OR FOR "PORTLAND CEMENT CONCRETE SURFACE REMOVAL - BUTT JOINT".

ALL DIMENSIONS ARE IN INCHES (MILLIMETERS) UNLESS OTHERWISE SHOWN.

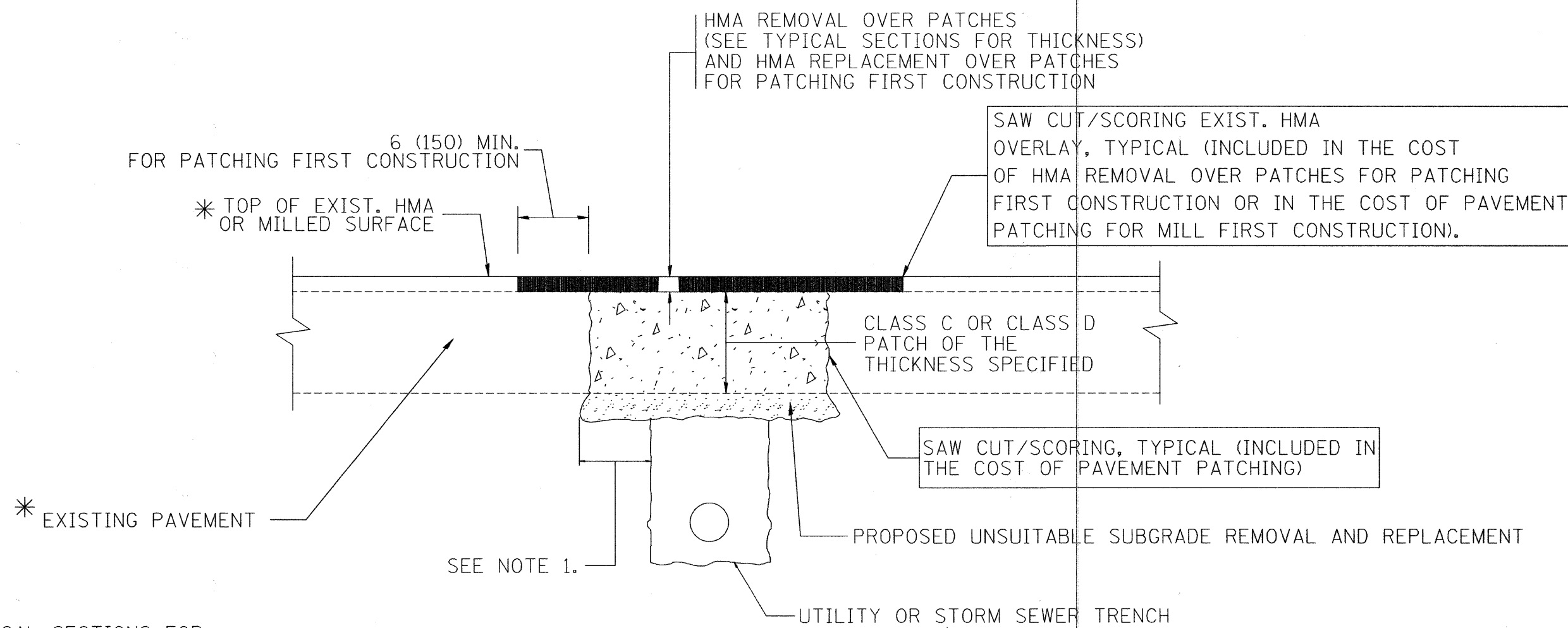
FILE NAME = 10616-DTIS-01-8032 - 80-32	USER NAME = gegl1anobt	DESIGNED - M. DE YONG	REVISED - R. SHAH 10-25-94
		CHECKED -	REVISED - A. ABBAS 03-21-97
	PLOT SCALE = 50.0000' / IN.	DRAWN -	REVISED - M. GOMEZ 04-06-01
	PLOT DATE = 1/4/2008	CHECKED - 06-13-90	REVISED - R. BORO 01-01-07

STATE OF ILLINOIS
DEPARTMENT OF TRANSPORTATION

BUTT JOINT AND
HMA TAPER DETAILS

SCALE: SHEET NO. 6 OF 10 SHEETS STA. TO STA.

F.A.U. RTE.	SECTION	COUNTY	TOTAL SHEETS	SHEET NO.
2404	11-00026-00-RS	COOK	10	6
BD400-05		BD32	CONTRACT NO. 63574	
FED. ROAD DIST. NO. 1		ILLINOIS	FED. AID PROJECT M-9003(775)	



* SEE TYPICAL SECTIONS FOR THICKNESS AND MATERIALS

NOTES:

1. THE WIDTH OF THE FULL DEPTH PATCH OVER A TRENCH SHALL BE 12 (300) WIDER ON EACH SIDE OF THE TRENCH.
2. FOR METHOD OF MEASUREMENT AND BASIS OF PAYMENT, SEE RECURRING SPECIAL PROVISION "PATCHING WITH HOT-MIX ASPHALT OVERLAY REMOVAL".

SEQUENCE OF CONSTRUCTION (PATCHING FIRST)

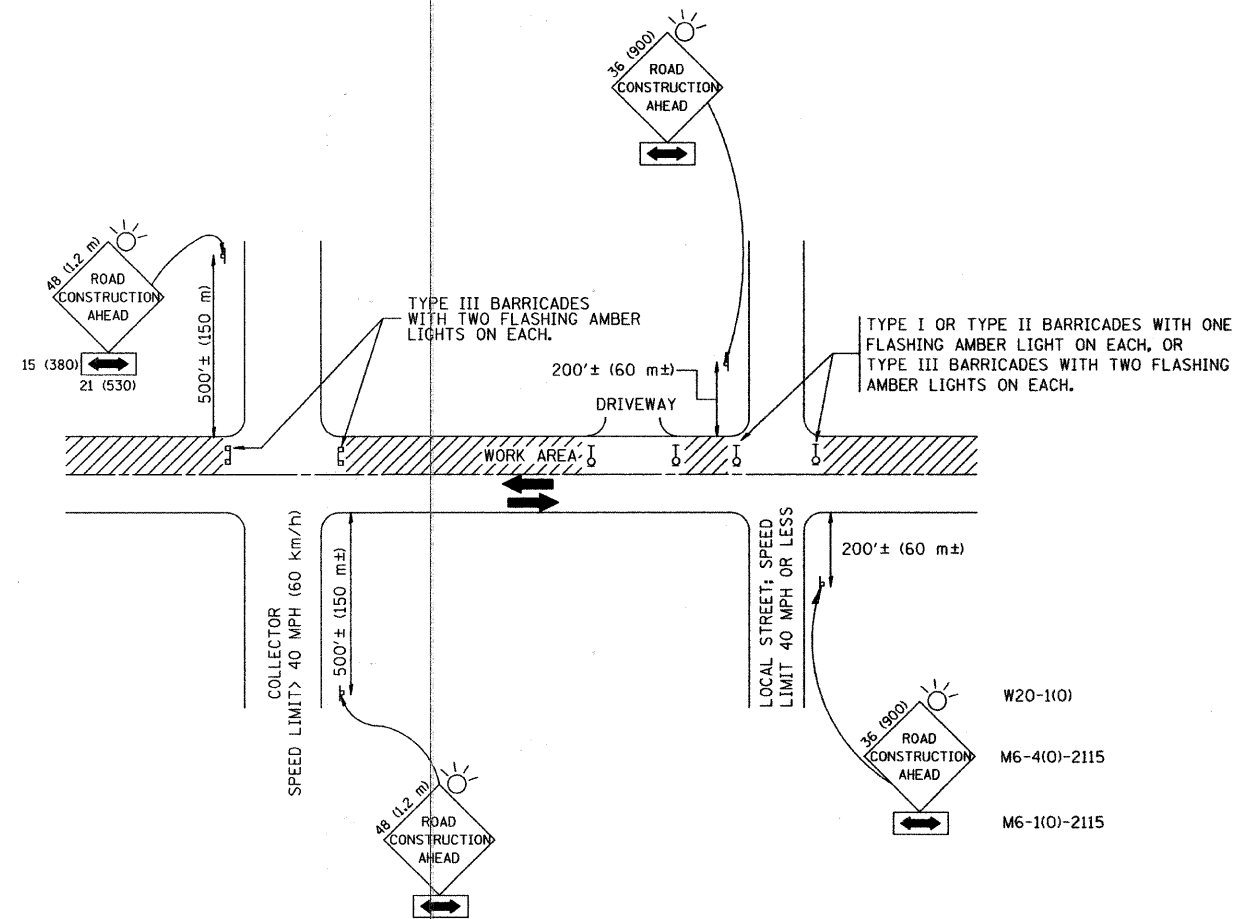
1. REMOVE THE EXISTING HMA MATERIAL OVER THE AREA TO BE PATCHED.
2. REMOVE AND REPLACE WITH CLASS C OR D PATCH.
3. REPLACE HMA MATERIAL OVER THE AREA TO BE PATCHED.

SEQUENCE OF CONSTRUCTION (MILLING FIRST)

1. MILL HMA FIRST IF THERE IS AT LEAST 4 1/2 INCHES OR MORE OF HMA MATERIAL ON TOP OF THE EXISTING PAVEMENT OR IF THE PAVEMENT IS FULL DEPTH HMA. A MINIMUM OF 2 INCHES OF HMA MATERIAL SHALL BE IN PLACE AFTER MILLING.
2. REMOVE AND REPLACE WITH FULL DEPTH CLASS D PATCHES TO TOP OF MILLED SURFACE.

ALL DIMENSIONS ARE IN INCHES (MILLIMETERS) UNLESS OTHERWISE SHOWN.

FILE NAME = 10616-DTIS-02-8022 - 80-22	USER NAME = bauerdl	DESIGNED - R. SHAH	REVISED - A. ABBAS 04-27-98	STATE OF ILLINOIS DEPARTMENT OF TRANSPORTATION	PAVEMENT PATCHING FOR HMA SURFACED PAVEMENT	F.A.U. RTE.	SECTION	COUNTY	TOTAL SHEETS	SHEET NO.	
		CHECKED -	REVISED - R. BORO 01-01-07			2404	11-00026-00-RS	COOK	10	7	
		PLOT SCALE = 50.000' / IN.	REVISED - R. BORO 09-04-07			80400-04 (80-22)		CONTRACT NO. 63574			
		PLOT DATE = 10/27/2008	REVISED - K. ENG 10-27-08			SCALE:	SHEET NO. 7 OF 10 SHEETS	STA.	TO STA.	FED. ROAD DIST. NO. 1	ILLINOIS



TRAFFIC CONTROL AND PROTECTION FOR SIDE ROADS, INTERSECTIONS, AND DRIVEWAYS

NOTES:

- A. FOR NO LANE RESTRICTION ON THE SIDE ROAD OR DRIVEWAYS
 - 1. SIDE ROAD WITH A SPEED LIMIT OF 40 MPH (60 km/h) OR LESS AS SHOWN ON THE DRAWING AND AS DIRECTED BY THE ENGINEER:
 - a) ONE **ROAD CONSTRUCTION AHEAD** SIGN 36 x 36 (900x900) WITH A FLASHER AND FLAG MOUNTED ON IT APPROXIMATELY 200' (60 m) IN ADVANCE OF THE MAIN ROUTE.
 - b) THE CLOSED PORTION OF THE MAIN ROUTE SHALL BE PROTECTED BY BLOCKING WITH TYPE I, TYPE II OR TYPE III BARRICADES, 1/3 OF THE CROSS SECTION OF THE CLOSED PORTION.
 - 2. SIDE ROAD WITH A SPEED LIMIT GREATER THAN 40 MPH (60 km/h) AS SHOWN ON THE DRAWING AND AS DIRECTED BY THE ENGINEER:
 - a) ONE **ROAD CONSTRUCTION AHEAD** SIGN 48 x 48 (1.2 m x 1.2 m) WITH A FLASHER MOUNTED ON IT APPROXIMATELY 500' (150 m) IN ADVANCE OF THE MAIN ROUTE.
 - b) THE CLOSED PORTION OF THE MAIN ROUTE SHALL BE PROTECTED BY BLOCKING WITH TYPE III BARRICADES, 1/2 OF THE CROSS SECTION OF THE CLOSED PORTION.
 - 3. WHEN THE SIDE ROAD LIES BETWEEN THE BEGINNING OF THE MAINLINE SIGNING AND THE WORK ZONE, A SINGLE HEADED ARROW (M6-1) SHALL BE USED IN LIEU OF THE DOUBLE HEADED ARROW (M6-4).
- B. FOR A LANE CLOSURE ON A SIDE ROAD OR DRIVEWAY:
 - USE APPLICABLE PORTIONS OF THE TYPICAL APPLICATION OF TRAFFIC CONTROL DEVICES (STD. 701501, STD. 701606 OR THE APPROPRIATE STANDARD). THE SPACING OF SIGNS AND BARRICADES SHALL BE ADJUSTED FOR FIELD CONDITIONS AS DIRECTED BY THE ENGINEER. THE DIRECTIONAL ARROW SHALL BE COVERED OR REMOVED WHEN NO LONGER CONSISTENT WITH THE SIDE ROAD LANE CLOSURE.
- C. ADVANCE WARNING SIGNS ARE TO BE OMITTED ON DRIVEWAY UNLESS OTHERWISE NOTED.
- D. THE TRAFFIC CONTROL AND PROTECTION FOR SIDE ROADS, INTERSECTIONS, AND DRIVEWAYS SHALL BE INCIDENTAL TO THE COST OF SPECIFIED TRAFFIC CONTROL STANDARDS OR ITEMS.

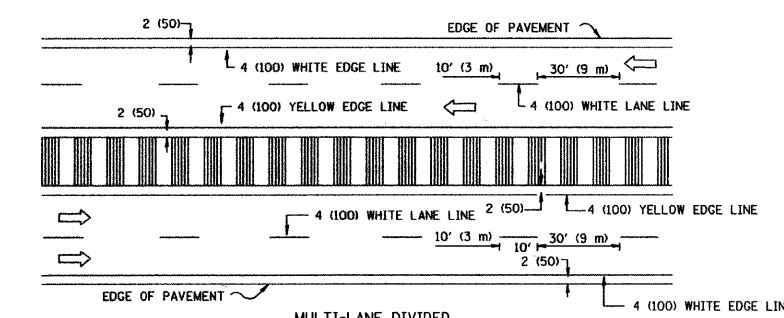
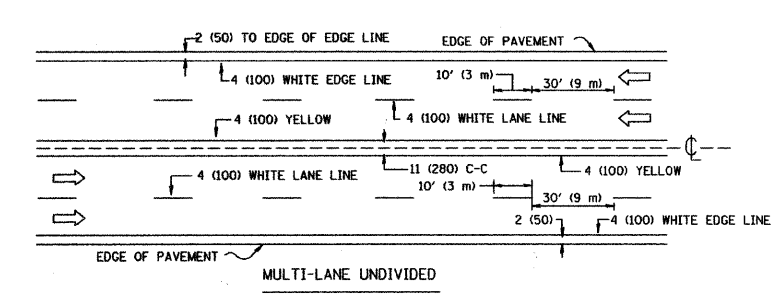
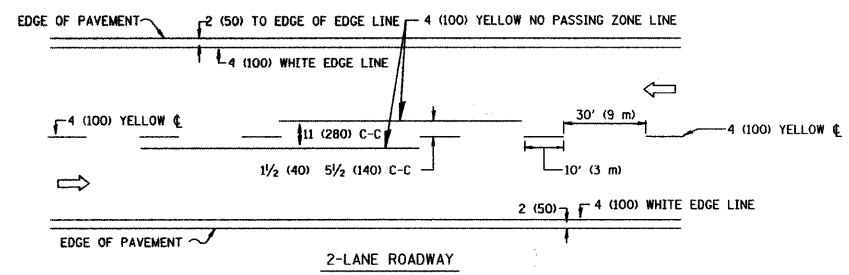
All dimensions are in millimeters (inches) unless otherwise shown.

FILE NAME = 10516-DTLS-06-TC10 - TC-10	USER NAME = geglienobt	DESIGNED -- LHA	REVISED -- J. OBERLE 10-18-95
		CHECKED --	REVISED -- A. HOUSEH 03-06-96
	PLOT SCALE = 50.000' / IN.	DRAWN --	REVISED -- A. HOUSEH 10-15-96
	PLOT DATE = 1/4/2008	CHECKED -- 06-89	REVISED -- T. RAMMACHER 01-06-00

STATE OF ILLINOIS
DEPARTMENT OF TRANSPORTATION

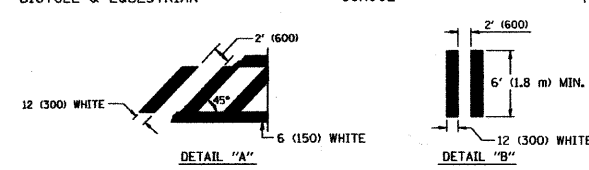
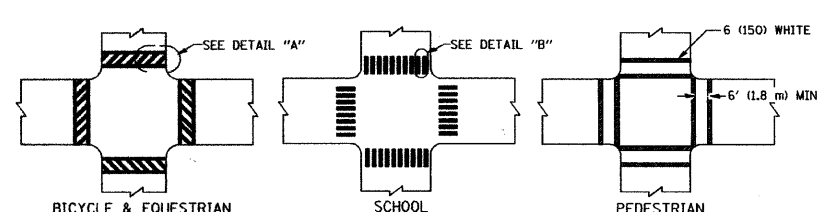
TRAFFIC CONTROL AND PROTECTION FOR SIDE ROADS, INTERSECTIONS, AND DRIVEWAYS	
SCALE:	SHEET NO. 9 OF 10 SHEETS STA. TO STA.

F.A.U. RTE.	SECTION	COUNTY	TOTAL SHEETS	SHEET NO.
2404	11-00026-00-RS	COOK	10	9
TC-10			CONTRACT NO. 63574	
FED. ROAD DIST. NO. 1 ILLINOIS FED. AID PROJECT M-5003(775)				

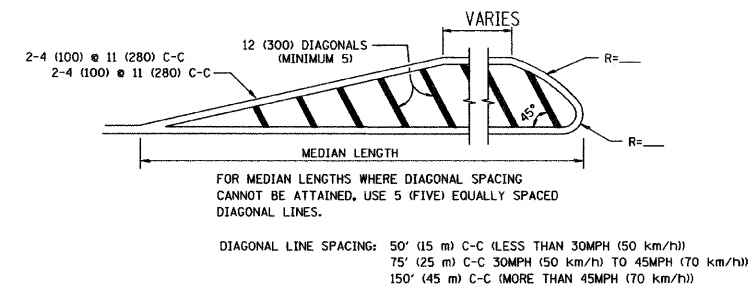
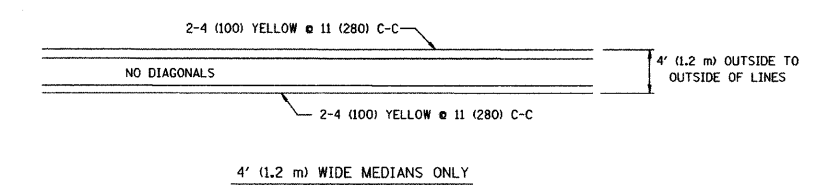


NOTE: MEDIANS WITH BARRIER CURBS DO NOT REQUIRE AN EDGE LINE

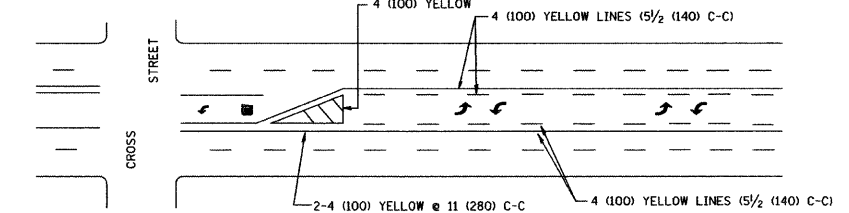
TYPICAL LANE AND EDGE LINE MARKING



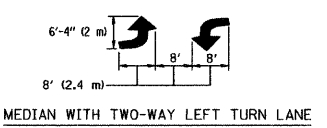
TYPICAL CROSSWALK MARKING



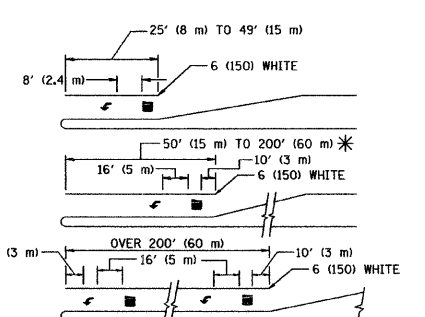
MEDIANS OVER 4' (1.2 m) WIDE



A MINIMUM OF TWO PAIRS OF TURN ARROWS SHALL BE USED, WHITE IN COLOR. ADDITIONAL PAIRS SHALL BE PLACED AT 200' (60 m) TO 300' (90 m) INTERVALS.



TYPICAL PAINTED MEDIAN MARKING

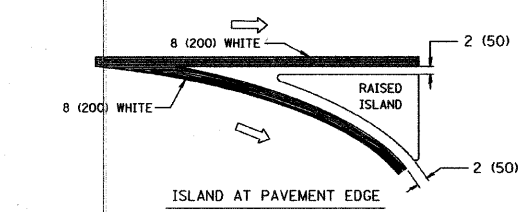
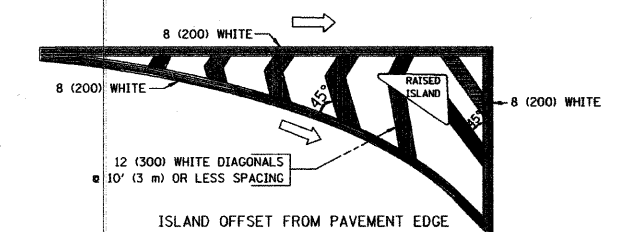


FULL SIZE LETTERS 8" (2.4 m) AND ARROWS SHALL BE USED. AREA = 15.6 SQ. FT. (1.5 m²) ; AREA = 20.8 SQ. FT. (1.9 m²)

* TURN LANES IN EXCESS OF 400' (120 m) IN LENGTH MAY HAVE AN ADDITIONAL SET OF ARROW - "ONLY" INSTALLED MIDWAY BETWEEN THE OTHER TWO SETS OF ARROW - "ONLY".

TYPICAL LEFT (OR RIGHT) TURN LANE

TYPICAL TURN LANE MARKING



TYPICAL ISLAND MARKING

TYPE OF MARKING	WIDTH OF LINE	PATTERN	COLOR	SPACING / REMARKS
CENTERLINE ON 2 LANE PAVEMENT	4 (100)	SKIP-DASH	YELLOW	10' (3 m) LINE WITH 30' (9 m) SPACE
CENTERLINE ON MULTI-LANE UNDIVIDED PAVEMENT	2 @ 4 (100)	SOLID	YELLOW	11 (280) C-C
NO PASSING ZONE LINES: FOR ONE DIRECTION FOR BOTH DIRECTIONS	4 (100) 2 @ 4 (100)	SOLID SOLID	YELLOW YELLOW	5 1/2 (140) C-C FROM SKIP-DASH CENTERLINE 11 (280) C-C OMIT SKIP-DASH CENTERLINE BETWEEN
LANE LINES	4 (100) 5 (125) ON FREEWAYS	SKIP-DASH SKIP-DASH	WHITE WHITE	10' (3 m) LINE WITH 30' (9 m) SPACE
DOTTED LINES (EXTENSIONS OF CENTER, LANE OR TURN LANE MARKINGS)	SAME AS LINE BEING EXTENDED	SKIP-DASH	SAME AS LINE BEING EXTENDED	2' (600) LINE WITH 6' (1.8 m) SPACE
EDGE LINES	4 (100)	SOLID	YELLOW-LEFT WHITE-RIGHT	OUTLINE MOUNTABLE MEDIANS IN YELLOW; EDGE LINES ARE NOT USED NEXT TO BARRIER CURB
TURN LANE MARKINGS	6 (150) LINE; FULL SIZE LETTERS & SYMBOLS (8" (2.4m))	SOLID	WHITE	SEE TYPICAL TURN LANE MARKING DETAIL
TWO WAY LEFT TURN MARKING	2 @ 4 (100) EACH DIRECTION 8' (2.4m) LEFT ARROW	SKIP-DASH AND SOLID IN PAIRS	YELLOW WHITE	10' (3 m) LINE WITH 30' (9 m) SPACE FOR SKIP-DASH; 5 1/2 (140) C-C BETWEEN SOLID LINE AND SKIP-DASH LINE SEE TYPICAL TWO-WAY LEFT TURN MARKING DETAIL
CROSSWALK LINES (PEDESTRIAN A. DIAGONALS (BIKE & EQUESTRIAN) B. LONGITUDINAL BARS (SCHOOL))	2 @ 6 (150) 12 (300) @ 45° 12 (300) @ 90°	SOLID SOLID	WHITE WHITE WHITE	NOT LESS THAN 6' (1.8 m) APART 2' (600) APART SEE TYPICAL CROSSWALK MARKING DETAILS.
STOP LINES	24 (600)	SOLID	WHITE	PLACE 4' (1.2 m) IN ADVANCE OF AND PARALLEL TO CROSSWALK, IF PRESENT. OTHERWISE, PLACE AT DESIRED STOPPING POINT. PARALLEL TO CROSSROAD CENTERLINE, WHERE POSSIBLE
PAINTED MEDIANS	2 @ 4 (100) WITH 12 (300) DIAGONALS @ 45° NO DIAGONALS USED FOR 4' (1.2 m) WIDE MEDIANS	SOLID	YELLOW: TWO WAY TRAFFIC WHITE: ONE WAY TRAFFIC	11 (280) C-C FOR THE DOUBLE LINE SEE TYPICAL PAINTED MEDIAN MARKING.
GORE MARKING AND CHANNELIZING LINES	8 (200) WITH 12 (300) DIAGONALS @ 45°	SOLID	WHITE	DIAGONALS: 15' (4.5 m) C-C (LESS THAN 30MPH (50 km/h)) 20' (6 m) C-C (30MPH (50 km/h) TO 45MPH (70 km/h)) 30' (9 m) C-C (OVER 45MPH (70 km/h))
RAILROAD CROSSING	24 (600) TRANSVERSE LINES; "RR" IS 6" (1.8 m) LETTERS 16 (400) LINE FOR "X"	SOLID	WHITE	SEE STATE STANDARD 780001 AREA OF: "R"=3.5 SQ. FT. (0.33 m ²) EACH "X"=54.0 SQ. FT. (5.0 m ²)
SHOULDER DIAGONALS	12 (300) @ 45°	SOLID	WHITE - RIGHT YELLOW - LEFT	50' (15 m) C-C (LESS THAN 30MPH (50 km/h)) 75' (25 m) C-C (30 MPH (50 km/h) TO 45MPH (70 km/h)) 150' (45 m) C-C (OVER 45MPH (70 km/h))

FOR FURTHER DETAILS ON PAVEMENT MARKING REFER TO STANDARD SPECIFICATIONS FOR ROAD AND BRIDGE CONSTRUCTION AND STATE STANDARD 780001.

All dimensions are in inches (millimeters) unless otherwise shown.