

SIGN LEGEND

FOR ADDITIONAL SIGNAGE SEE SHEET 7

- ① RI-1
24" X 24"
- ② W11-1
24" X 24"
- ③ W16-7PL
24" X 12"
- ④ RS
24" X 24"
(BROWN WITH WHITE LETTERS)
- ⑤ M6-1
24" X 12"
(BROWN WITH WHITE LETTERS)
- ⑥ M6-1a
24" X 12"
(BROWN WITH WHITE LETTERS)
- ⑦ R5-3
24" X 24"
- ⑧ W2-1
24" X 24"
- ⑨ D11-1
24" X 18"
- ⑩ M6-4
12" X 9"

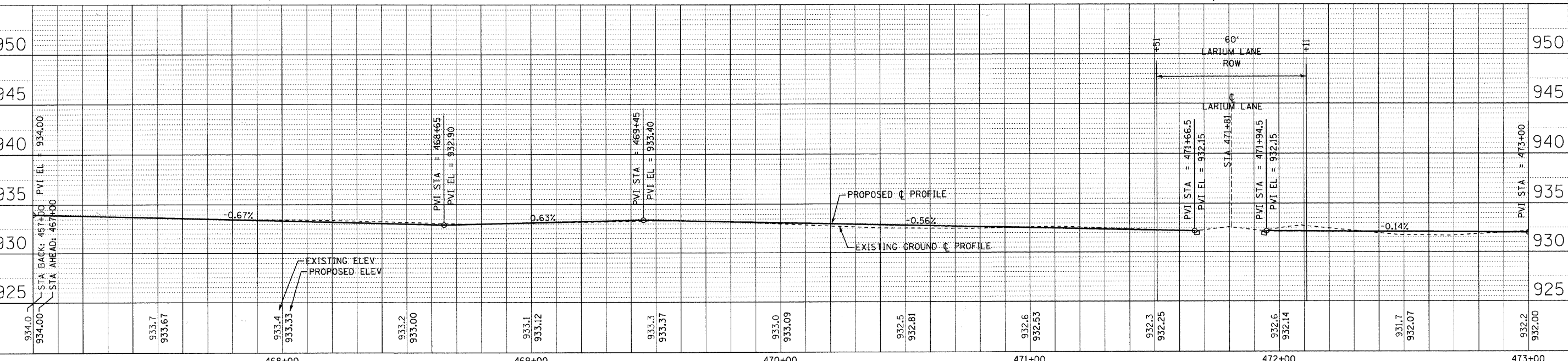
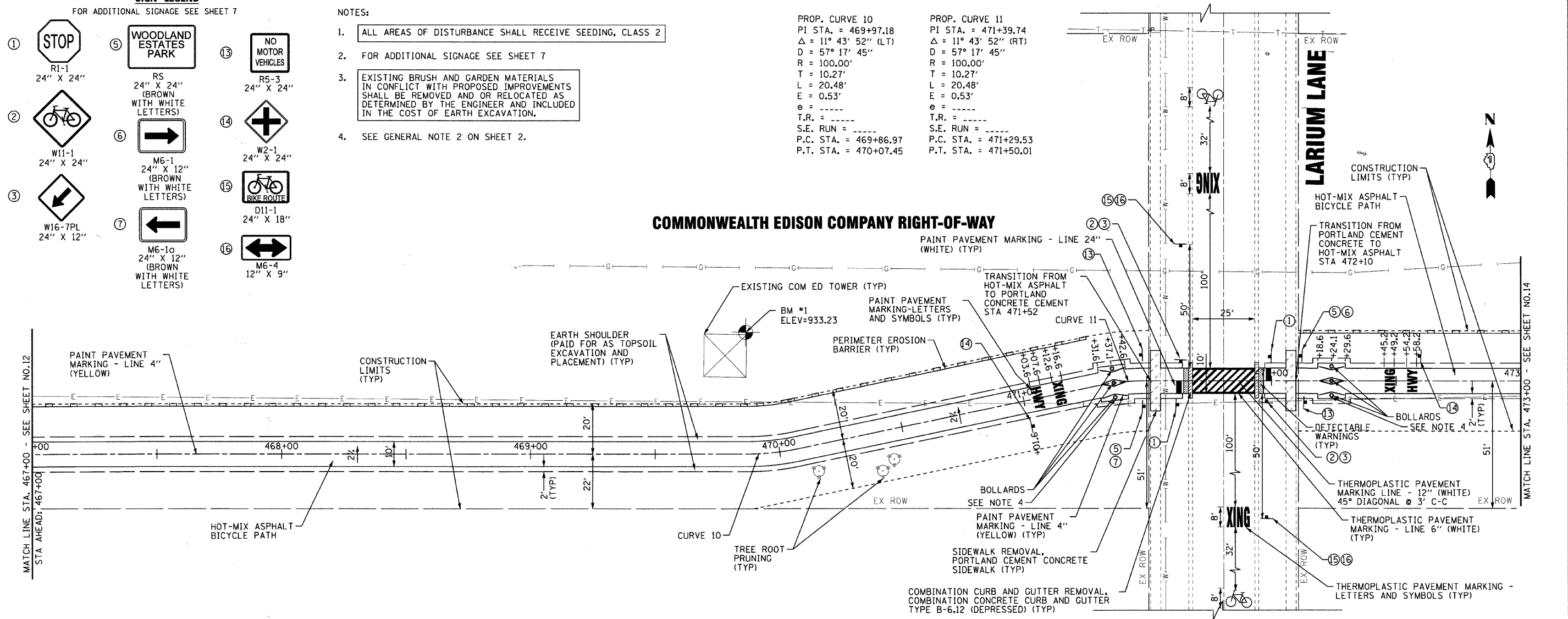
NOTES:

- ALL AREAS OF DISTURBANCE SHALL RECEIVE SEEDING, CLASS 2
- FOR ADDITIONAL SIGNAGE SEE SHEET 7
- EXISTING BRUSH AND GARDEN MATERIALS IN CONFLICT WITH PROPOSED IMPROVEMENTS SHALL BE REMOVED AND OR RELOCATED AS DETERMINED BY THE ENGINEER AND INCLUDED IN THE COST OF EARTH EXCAVATION.
- SEE GENERAL NOTE 2 ON SHEET 2.

PROP. CURVE 10
PI STA. = 469+97.18
Δ = 11° 43' 52" (LT)
D = 57° 17' 45"
R = 100.00'
T = 10.27'
L = 20.48'
E = 0.53'
e = -----
T.R. = -----
S.E. RUN = -----
P.C. STA. = 469+86.97
P.T. STA. = 470+07.45

PROP. CURVE 11
PI STA. = 471+39.74
Δ = 11° 43' 52" (RT)
D = 57° 17' 45"
R = 100.00'
T = 10.27'
L = 20.48'
E = 0.53'
e = -----
T.R. = -----
S.E. RUN = -----
P.C. STA. = 471+29.53
P.T. STA. = 471+50.01

COMMONWEALTH EDISON COMPANY RIGHT-OF-WAY



USER NAME = 522rkm	DESIGNED - AEB	REVISED - PER IDOT 3/25/11
FILE NAME = 092593-PPB.sht	DRAWN - RKM/CJC	REVISED - PER IDOT 4/11/11
PLDT DATE = 4/13/2011	CHECKED - MDW	REVISED -
	DATE - 1/26/11	REVISED -

McHENRY COUNTY CONSERVATION DISTRICT
RIDGEFIELD TRACE EXTENSION
BICYCLE PATH

PLAN AND PROFILE		F.A. RTE.	SECTION	COUNTY	TOTAL SHEETS	SHEET NO.
SCALE: 1" = 20'		N/A	00-C2000-03-BT	McHENRY	25	13
STA. 467+00 TO STA. 473+00		JOB NO: C-91-711-10		CONTRACT NO. 63578		
FED. ROAD DIST. NO. 1 ILLINOIS; FED. AID PROJECT NO: CMM-9003 (680)						
McHENRY COUNTY CONSERVATION DISTRICT BID #0311.09.01						

COPYRIGHT © 2011 BY BAXTER & WOODMAN, INC.
 ALL RIGHTS RESERVED.
 LICENSE NO. 00-00001-EXPIRES 4/30/2013
 4/13/2011