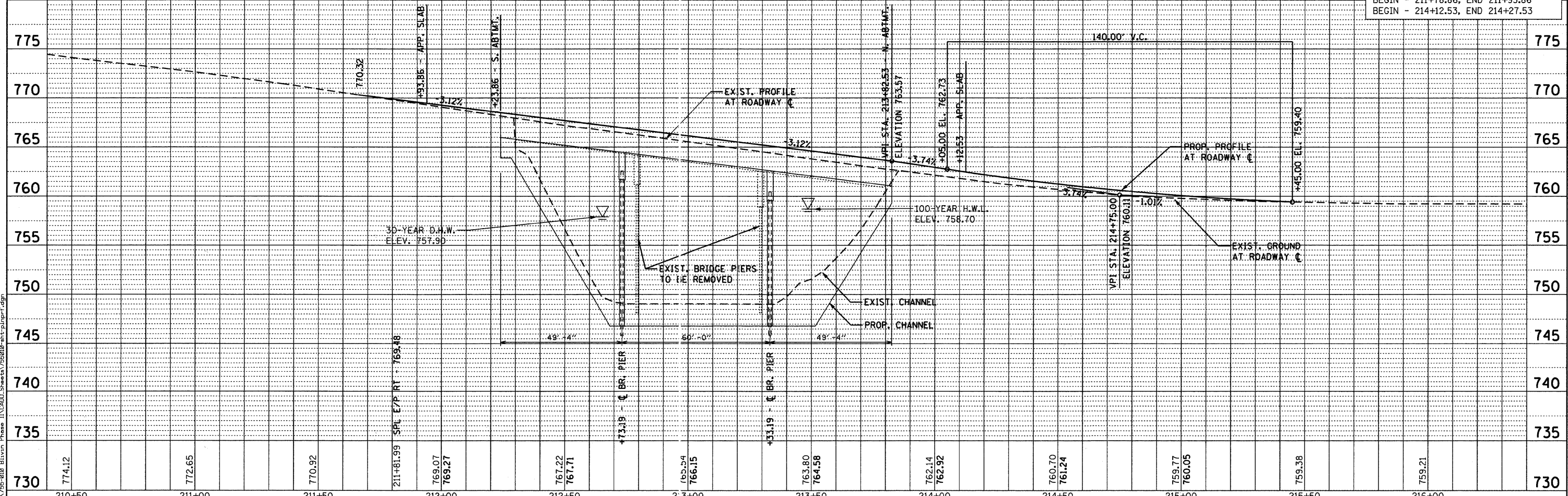
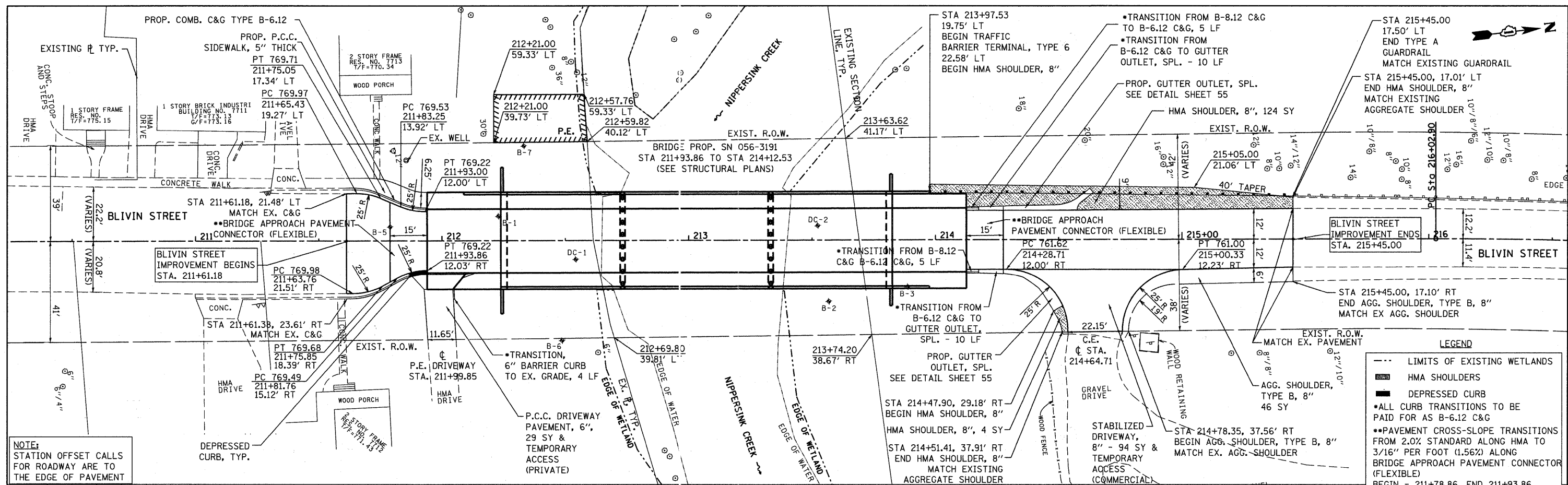


DATE	
BY	
PLANNED	
CHECKED	
BY	
DATE	
NO.	
DATE	
BY	
PLANNED	
CHECKED	
BY	
DATE	
NO.	

DATE	
BY	
PLANNED	
CHECKED	
BY	
DATE	
NO.	
DATE	
BY	
PLANNED	
CHECKED	
BY	
DATE	
NO.	



**LEGEND**

- LIMITS OF EXISTING WETLANDS
- ▬ HMA SHOULDERS
- ▬ DEPRESSED CURB
- ALL CURB TRANSITIONS TO BE PAID FOR AS B-6.12 C&G
- PAVEMENT CROSS-SLOPE TRANSITIONS FROM 2.0% STANDARD ALONG HMA TO 3/16" PER FOOT (1.56%) ALONG BRIDGE APPROACH PAVEMENT CONNECTOR (FLEXIBLE)
- BEGIN - 211+78.86, END 211+93.86
- BEGIN - 214+12.53, END 214+27.53

<p><b>Bollinger, Lach &amp; Associates, Inc.</b> ITASCA, ILLINOIS</p>	USER NAME = dbrucke1meyer	DESIGNED - DBB	REVISED -	<b>BLIVIN STREET OVER NIPPERSINK CREEK</b>	<b>BLIVIN STREET PLAN AND PROFILE</b>		F.A. RTE.	SECTION	COUNTY	TOTAL SHEETS	SHEET NO.	
	PLOT SCALE = 20.0000' / IN.	DRAWN - DBB	REVISED -		SCALE: 1"=20'		SHEET NO. 14 OF 69 SHEETS	08-00355-00-BR	MCHENRY	69	14	
	PLOT DATE = 4/6/2011	CHECKED - CRF	REVISED -		STA. 211+61.18 TO STA. 215+45.00		CONTRACT NO. 63583		FED ROAD DIST NO. 1 (ILLINOIS) FED AID PROJECT			
	DATE = 03-28-11	DATE -	REVISED -									