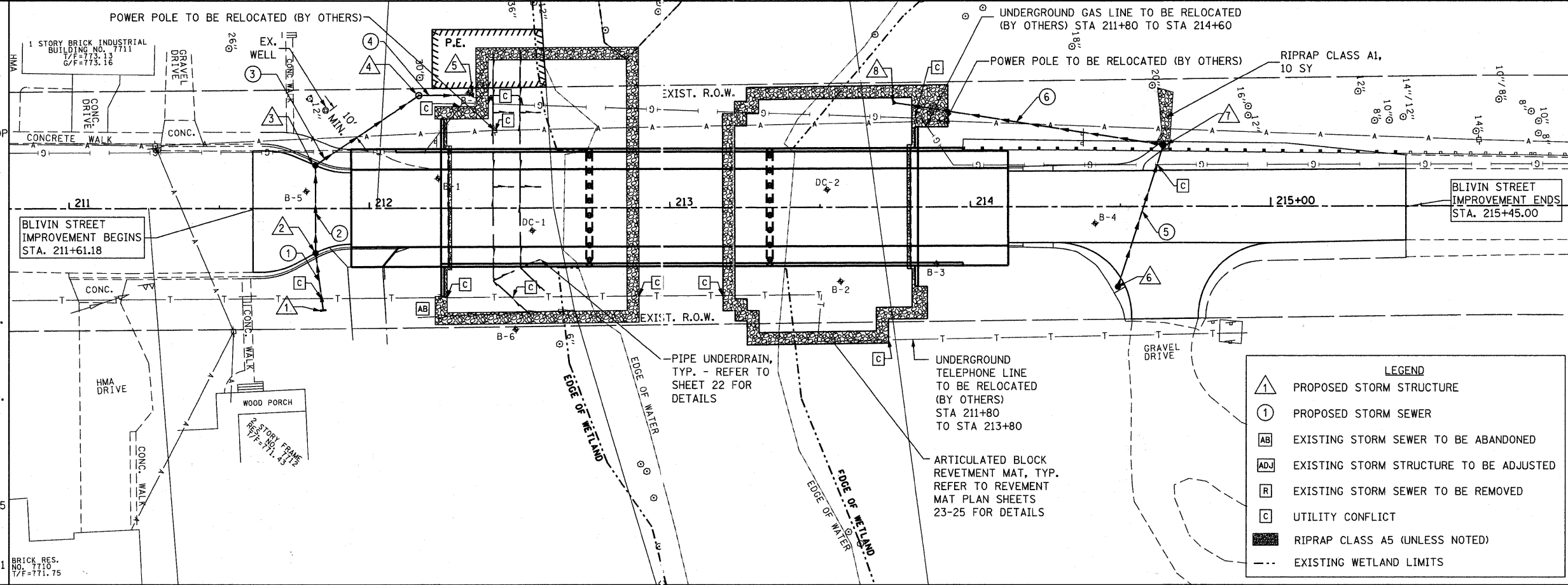


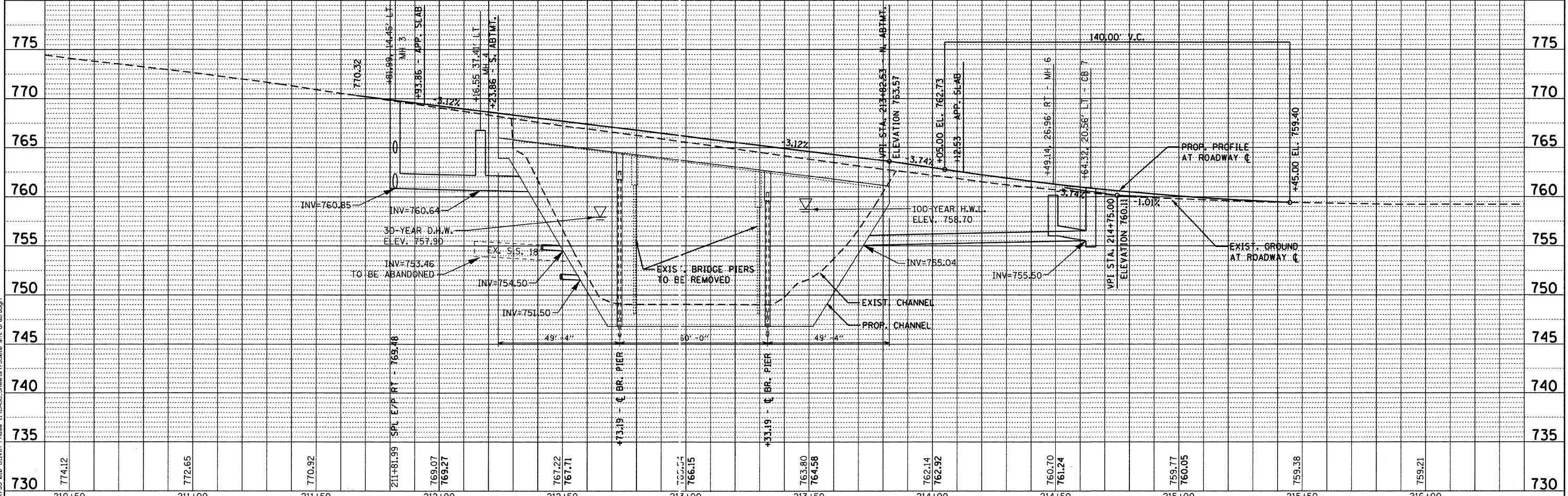
DATE	
BY	
PLAN	
NO.	
DATE	
BY	
PROFILE	
NO.	

DATE	
BY	
PROFILE	
NO.	
DATE	
BY	
PLAN	
NO.	

- 1 INLET, TYPE A, 2'Ø
TYPE 8 GRATE
RIM=767.45
211+84.51, 34.29'RT
INV=764.95, 15'W
- 2 CB, TYPE A, 4'Ø R.D.
TYPE 11 F&G
RIM=769.48
211+81.99, 15.00'RT
INV=764.75, 15'E,W
- 3 MH, TYPE A, 4'Ø DROP
TYPE 11 F&G
RIM=769.54
211+81.99, 14.45'LT
INV=764.45, 15'E
INV=760.85, 18'NW
- 4 MH, TYPE A, 4'Ø
TYPE 1 F&G, CL
RIM=766.75
212+16.55, 37.41'LT
INV=760.64, 18'SE,N
- 5 FES, 18"
W/GRATE
212+34.85, 37.49'LT
INV=760.55, 18'S
- 6 MH, TYPE A, 4'Ø, R.D.
W/FLAT TOP
TYPE 8 GRATE
RIM=759.00
214+49.14, 26.96' RT
INV=756.00, 12'NW
- 7 CB, TYPE A, 4'Ø, R.D.
W/FLAT TOP
TYPE 8 GRATE
RIM=760.25
214+64.32, 20.56'LT
INV=755.50, 12'SE,SW
- 8 12" PIPE
NO GRATE (IN ACBM)
SEE DETAIL SHEET 25
213+74.22, 34.79'LT
INV=755.04, 12'N



- LEGEND**
- △ PROPOSED STORM STRUCTURE
 - PROPOSED STORM SEWER
 - AB EXISTING STORM SEWER TO BE ABANDONED
 - ADJ EXISTING STORM STRUCTURE TO BE ADJUSTED
 - R EXISTING STORM SEWER TO BE REMOVED
 - C UTILITY CONFLICT
 - RIPRAP CLASS A5 (UNLESS NOTED)
 - - - EXISTING WETLAND LIMITS
- NOTES:**
- 1) STATION/OFFSET CALLS FOR ROADWAY MEASURED TO EDGE OF PAVEMENT.
 - 2) STORM WATER STRUCTURE OFFSET LOCATIONS GIVEN ON THE DETAILED PLANS ARE TO THE CENTER OF THE STRUCTURE



775	770	765	760	755	750	745	740	735	730		
210+50	211+00	211+50	212+00	212+50	213+00	213+50	214+00	214+50	215+00	215+50	216+00

Bollinger, Lach & Associates, Inc.
ITASCA, ILLINOIS

USER NAME = dbruckelmeyer	DESIGNED - DBB	REVISED -
PLOT SCALE = 20.0000' / IN.	DRAWN - DBB	REVISED -
PLOT DATE = 3/25/2011	CHECKED - CRF	REVISED -
DATE - 03-28-11	DATE - 03-28-11	REVISED -

BLIVIN STREET OVER NIPPERSINK CREEK

BLIVIN STREET DRAINAGE AND UTILITY	
SCALE: 1"=20'	SHEET NO. 15 OF 69 SHEETS
STA. 211+61.18	TO STA. 215+45.00

F.A. RTE.	SECTION	COUNTY	TOTAL SHEETS	SHEET NO.
	08-00355-00-BR	MCHENRY	69	15
FED ROAD DIST NO. 1		ILLINOIS FED AID PROJECT		
		CONTRACT NO. 63583		