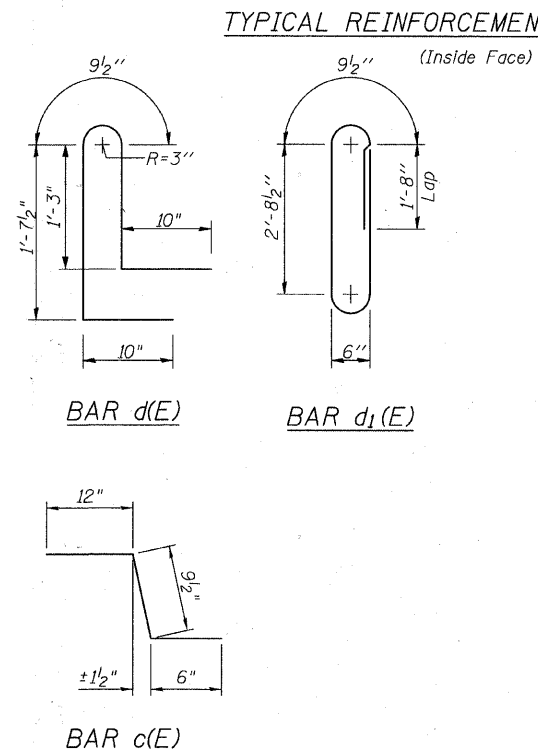
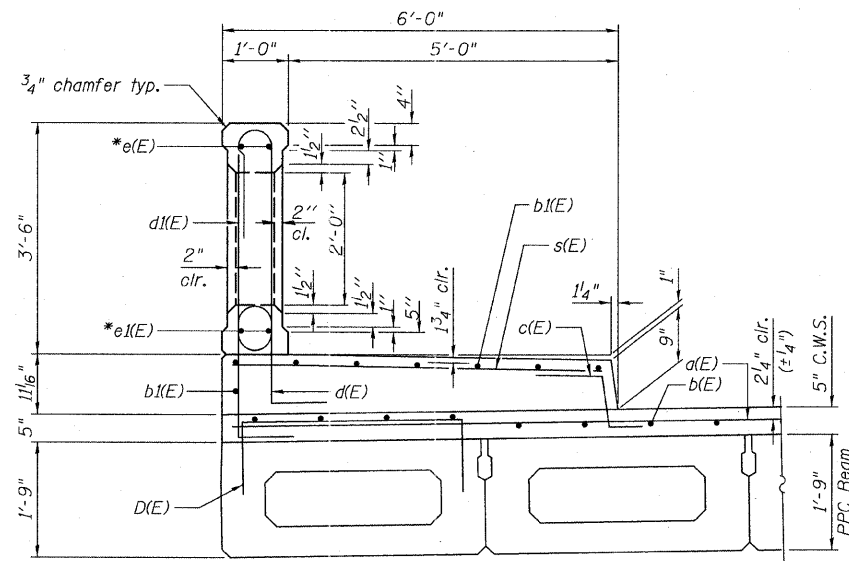
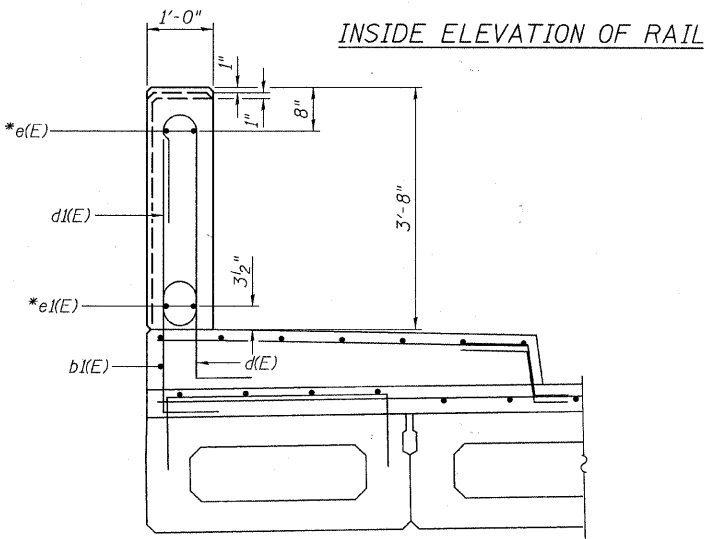
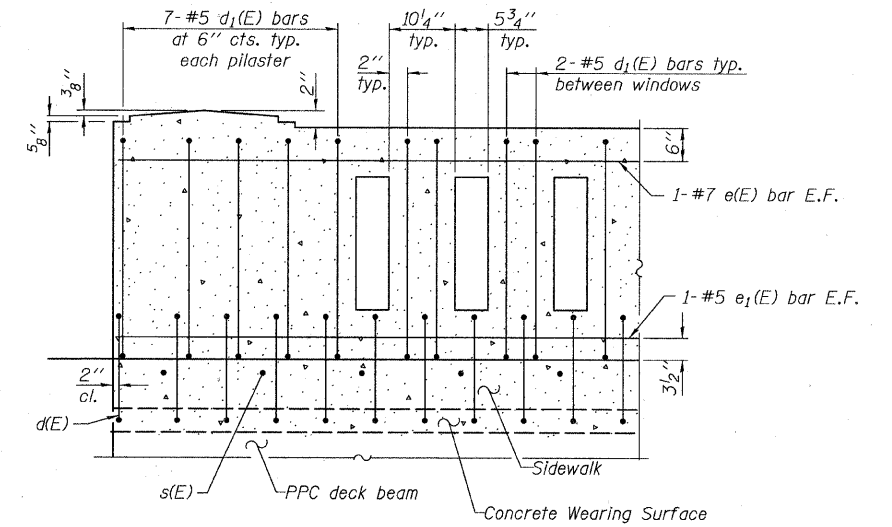
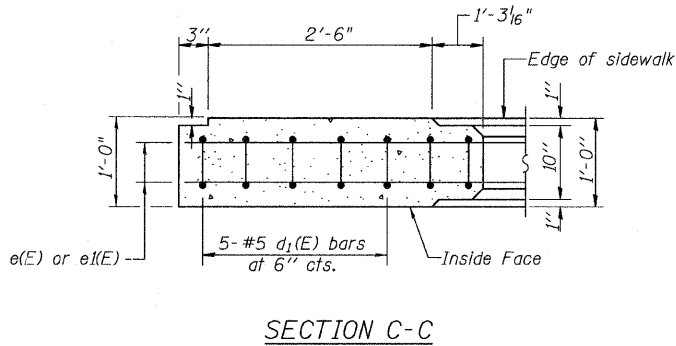
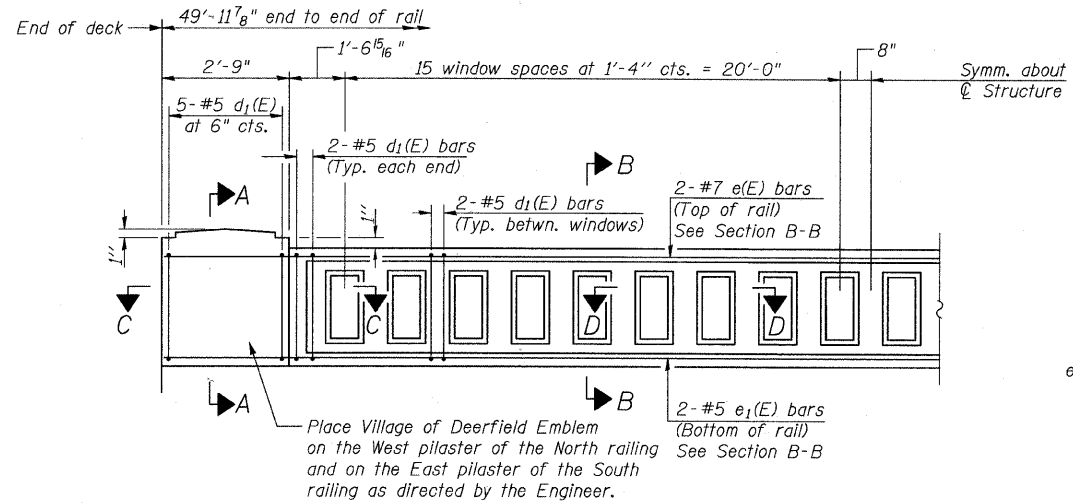


STATE OF ILLINOIS
DEPARTMENT OF TRANSPORTATION



TYPICAL REINFORCEMENT PLACEMENT

SUPERSTRUCTURE
BILL OF MATERIAL

Bar	No.	Size	Length	Shape
b ₁ (E)	28	#5	27'-8"	—
c(E)	106	#5	2'-4"	└
d(E)	106	#5	5'-4"	└
s(E)	106	#5	5'-8"	—
** Protective Coat		Sq. Yds.	110	
Concrete Superstructure		Cu. Yds.	19.5	
* Reinforcement Bars, Epoxy Coated		Pound	2,280	
Concrete Bridge Railing, Sidewalk Mounted		Foot	100	

SECTION A-A

RAILING BAR LIST
ONE RAILING ONLY
(For Information Only)

Bar	No.	Size	Length	Shape
d ₁ (E)	76	#5	8'-8"	—
e(E)	4	#7	26'-10"	—
e ₁ (E)	4	#5	26'-1"	—

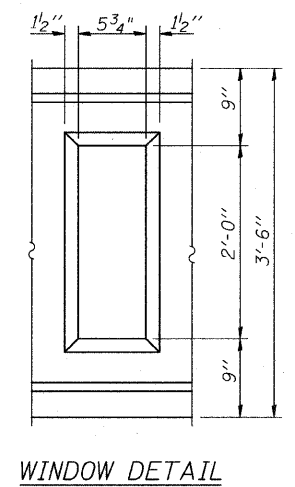
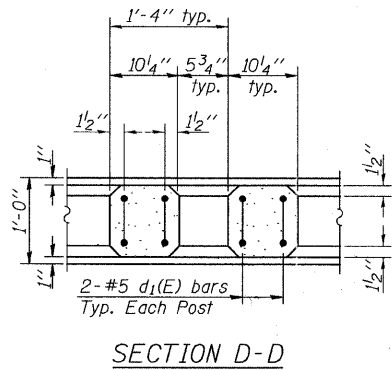
*Bars e(E) thru e₁(E) and d₁(E) are included in the cost of Concrete Bridge Railing, Sidewalk Mounted.

SECTION B-B

MIN. BAR LAP
#5 bars = 2'-6"
#7 bars = 3'-11"

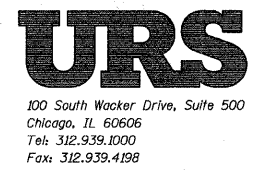
Notes:
All concrete for railing wall shall be Class BS according to Article 1020.04 of the Standard Specifications. Surface of railing shall receive a rubbed finish according to Article 503.15(b) of the Standard Specifications.
All parts of the railing including concrete and reinforcing will be paid for at the contract unit price per foot for Concrete Bridge Railing, Sidewalk Mounted. Holes and recesses must be formed or cored. Drilling is not permitted.
All construction joints shall be bonded unless otherwise noted.
Work this sheet with Sheet No. 3 of 12

DESIGNED	DYS
CHECKED	JPB
DRAWN	DYS
CHECKED	JPB



WINDOW DETAIL

SUPERSTRUCTURE & RAILING DETAILS
STRUCTURE NO. 049-6161



SHEET NO. S-4 12 SHEETS	F.A.U. RTE.	SECTION	COUNTY	TOTAL SHEETS	SHEET NO.
		09-00085-00-BR	LAKE	22	12
			CONTRACT NO. 63584		
FED. ROAD DIST. NO. _ ILLINOIS FED. AID PROJECT					