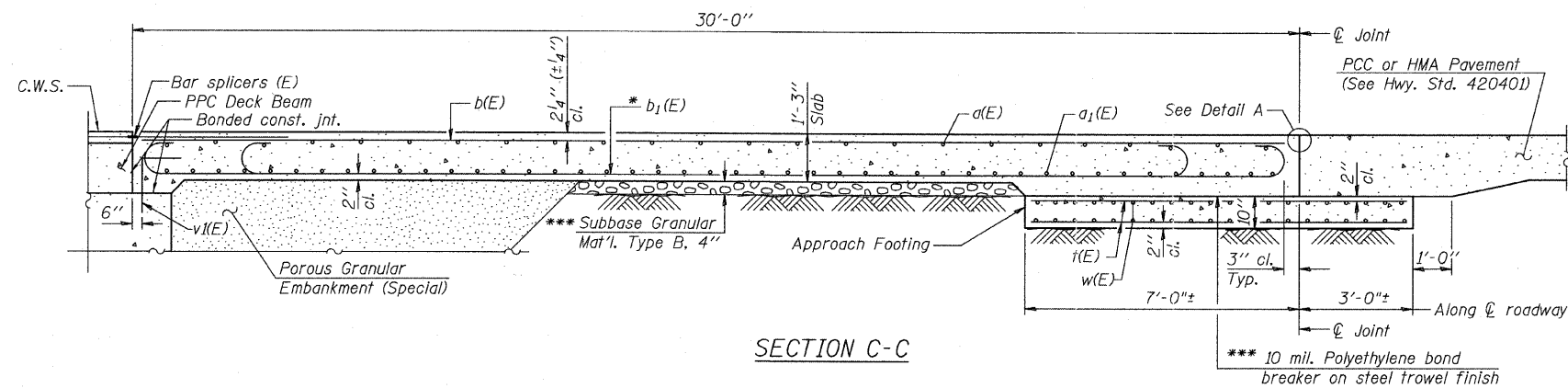
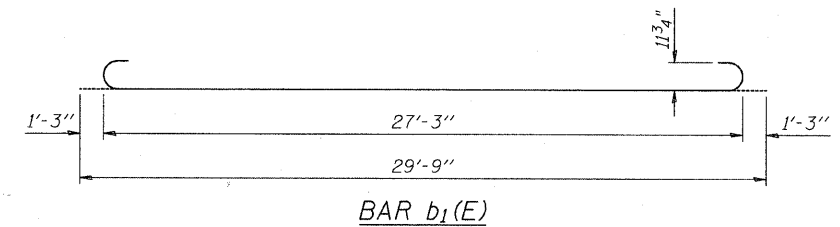


STATE OF ILLINOIS
DEPARTMENT OF TRANSPORTATION



SECTION C-C

Notes:
See sheet 9 of 12 for Detail A.
Approach slab and parapet concrete shall be paid for as Concrete Superstructure.
Approach footing concrete shall be paid for as Concrete Structures.
Reinforcement shall be paid for as Reinforcement Bars, Epoxy Coated.
For v(E) bar details, see sheet 7 of 12.
The approach footing maximum applied service bearing pressure (Qmax) = 2.0 ksf.
For bar splicer details, see sheet 11 of 12.
Cost of excavation for approach footing included with Concrete Structures.
For Porous Granular Embankment (Special) and drainage treatment details, see sheet 7 of 12.



BAR b₁(E)

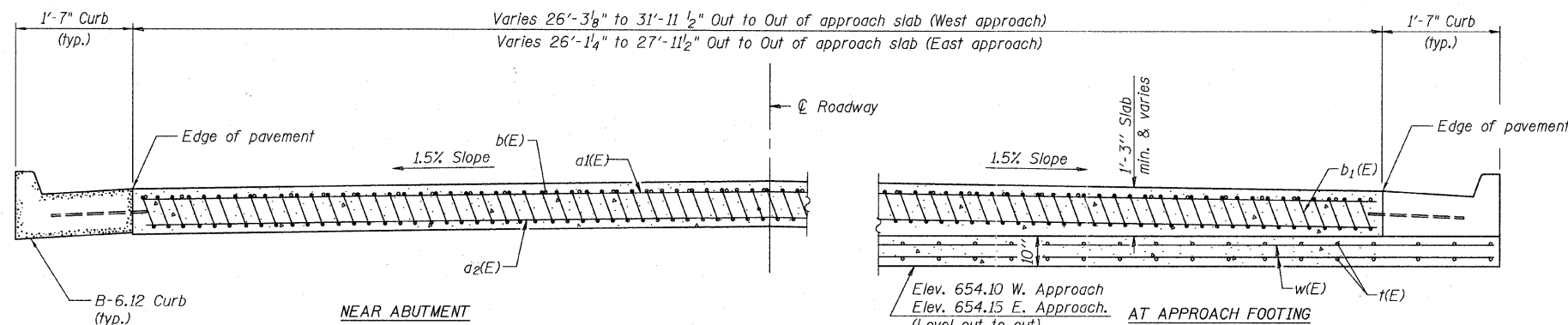
* Tilt #9 b₁(E) bars as required to maintain clearance.

*** Cost included with Concrete Superstructure.

TWO APPROACHES
BILL OF MATERIAL

Bar	No.	Size	Length	Shape
a1(E)	54	#4	29'-0"	—
a2(E)	92	#5	29'-0"	—
b(E)	50	#4	28'-7"	—
b ₁ (E)	140	#9	29'-9"	U
d(E)	12	#4	6'-0"	—
f(E)	136	#4	9'-8"	—
w(E)	80	#5	17'-9"	—
w1(E)	80	#5	15'-4"	—
Item	Unit	Quantity		
Protective Coat	Sq. Yd.	175		
Concrete Superstructure	Cu. Yd.	78.0		
Concrete Structures	Cu. Yd.	18.7		
Bridge Deck Grooving	Sq. Yd.	175		
Reinforcement Bars, Epoxy Coated	Pound	22,670		

*See Special Provisions



SECTION D-D

(See Plan for dimensions not shown)

DESIGNED	DYS
CHECKED	JPB
DRAWN	DYS
CHECKED	JPB

URS
100 South Wacker Drive, Suite 500
Chicago, IL 60606
Tel: 312.939.1000
Fax: 312.939.4198

APPROACH SLAB DETAIL-2
STRUCTURE NO. 049-6161

SHEET NO.S-10 12 SHEETS	F.A.U. RTE.	SECTION	COUNTY	TOTAL SHEETS	SHEET NO.
		09-00085-00-BR	LAKE	22	18
	CONTRACT NO. 63584				
FED. ROAD DIST. NO. - ILLINOIS FED. AID PROJECT					