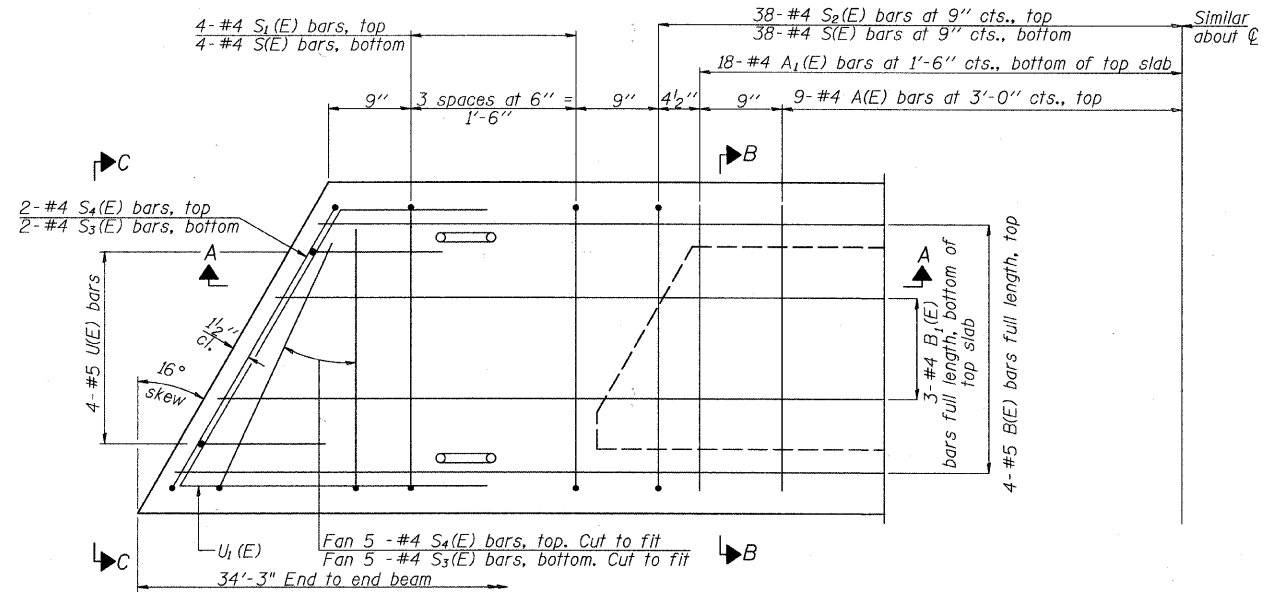
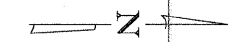
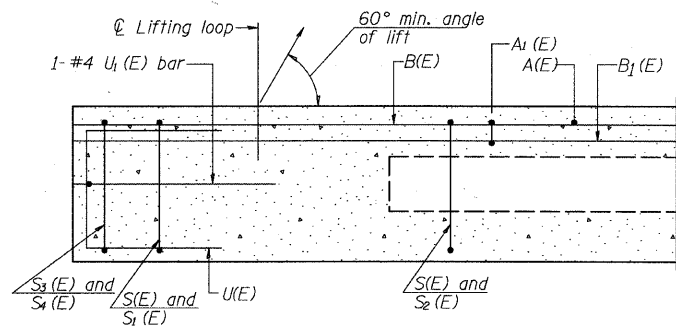


STATE OF ILLINOIS  
DEPARTMENT OF TRANSPORTATION

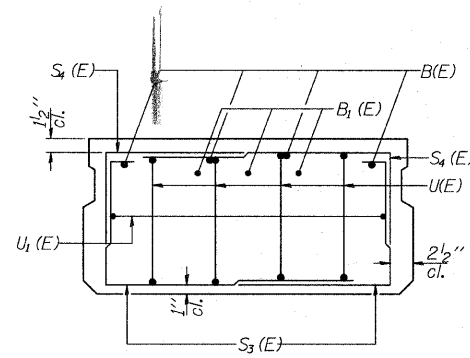


PLAN VIEW

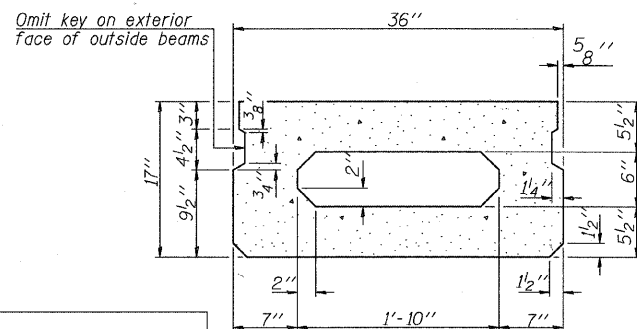
Note: Spacing of S(E) and S2(E) bars may be adjusted up to 4" in the immediate area of the transverse tie diaphragms to miss the block outs for the transverse ties.



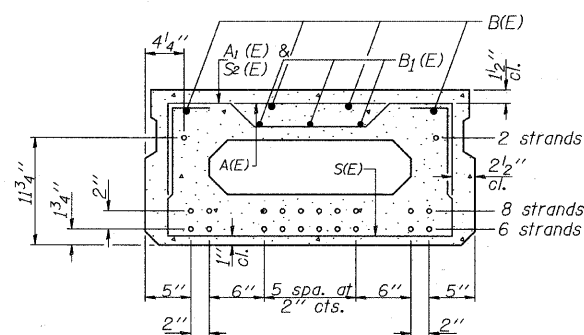
SECTION A-A



VIEW C-C

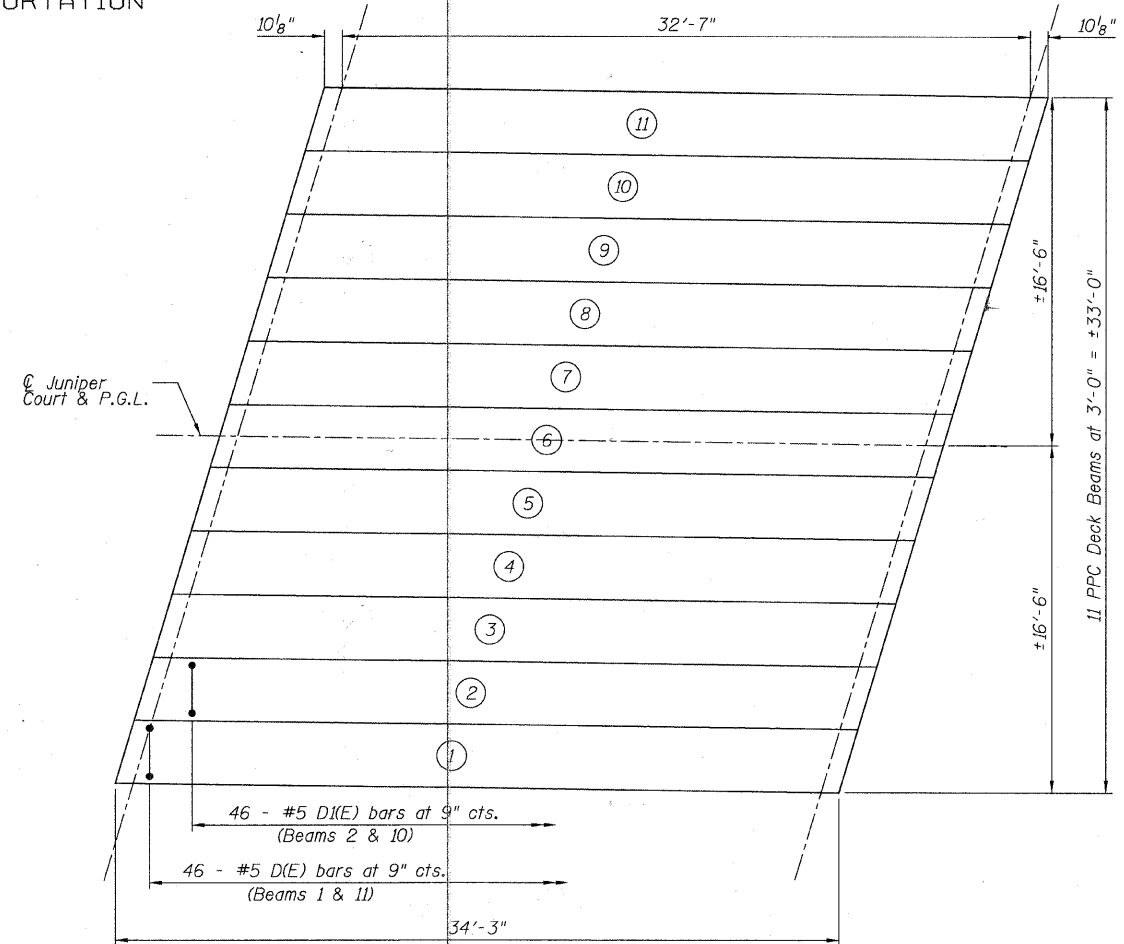


SECTION B-B  
(Showing dimensions)

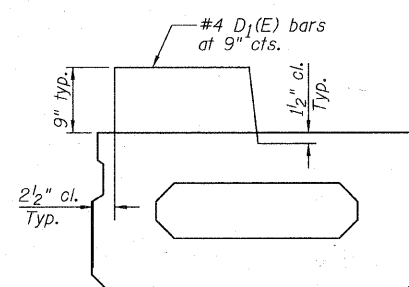


SECTION B-B

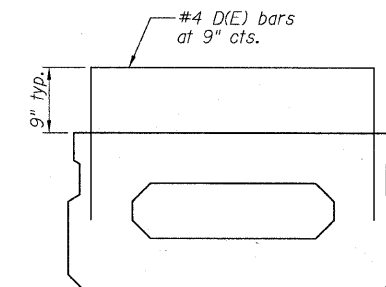
(Showing reinforcement and permissible strand locations)  
Note: Place the number of strands specified in each row symmetrically about the centerline of beam in the permissible strand locations shown.



FRAMING PLAN



DECK BEAMS 2 & 10  
Showing additional reinforcement  
(Deck Beam 10 shown, Deck Beam 2 opposite hand)



DECK BEAMS 1 & 11  
Showing additional reinforcement

PPC DECK BEAM DETAILS  
STRUCTURE NO. 049-6153

DESIGNED	L. LAWS
CHECKED	J. BUCHOLC
DRAWN	L. LAWS
CHECKED	J. BUCHOLC

SHEET NO. 5	F.A.U. RTE.	SECTION	COUNTY	TOTAL SHEETS	SHEET NO.
		09-00084-00-BR	LAKE	16	11
10 SHEETS	CONTRACT NO. 63587				
FED. ROAD DIST. NO. -		ILLINOIS FED. AID PROJECT			

**URS**  
100 South Wacker Drive, Suite 500  
Chicago, IL 60606  
Tel: 312.939.1000  
Fax: 312.939.4198