

F.A.U. RTE.	SECTION	COUNTY	TOTAL SHEETS	SHEET NO.
1504	09-00090-00-SW	COOK	25	1
		ILLINOIS	CONTRACT NO. 63596	

INDEX OF SHEETS

SHEET NO:	TITLE:
1	TITLE SHEET
2	GENERAL NOTES, STATE STANDARDS AND BENCH MARKS
3	SUMMARY OF QUANTITIES
4	SCHEDULES OF QUANTITIES
5	TYPICAL SECTIONS
6-10	GEOMETRIC PLANS
11	CONSTRUCTION DETAILS
12-13	DISTRICT DETAILS
14-25	CROSS SECTIONS

**STATE OF ILLINOIS
DEPARTMENT OF TRANSPORTATION
DIVISION OF HIGHWAYS**

**PLANS FOR PROPOSED
FEDERAL AID HIGHWAY**

49TH STREET, 51ST STREET, 53RD STREET, F.A.U. 1504 (55TH STREET)

FAIR ELMS AVENUE, AND CAROLINE AVENUE

SIDEWALK CONSTRUCTION

SECTION: 09-00090-00-SW

PROJECT: HPP-1419(011)

VILLAGE OF WESTERN SPRINGS

COOK COUNTY

C-91-878-09

TRAFFIC DATA

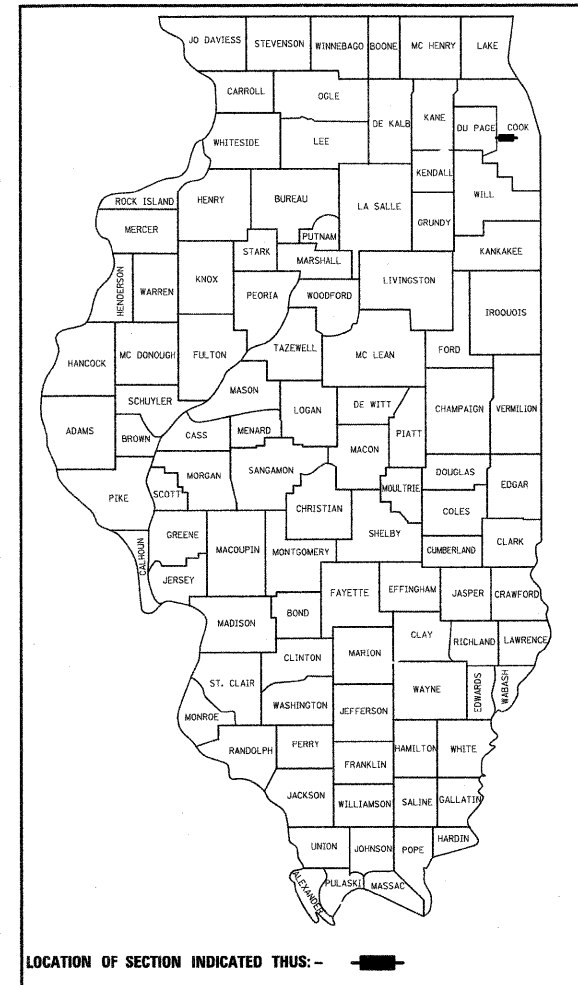
ADT:
49TH STREET = 500
51ST STREET = 500
53RD STREET = 500
FAIR ELMS AVENUE = 500
CAROLINE AVENUE = 500
55TH STREET = 20,600

POSTED SPEED LIMIT:

49TH STREET = 25 MPH
51ST STREET = 25 MPH
53RD STREET = 25 MPH
FAIR ELMS AVENUE = 25 MPH
CAROLINE AVENUE = 25 MPH
55TH STREET = 40 MPH

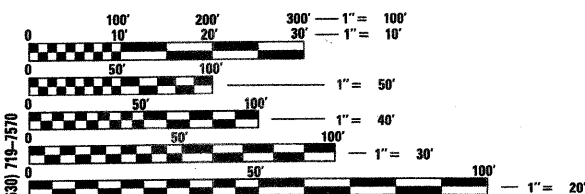
DESIGN DESIGNATION:

49TH STREET = LOCAL ROAD
51ST STREET = LOCAL ROAD
53RD STREET = LOCAL ROAD
FAIR ELMS AVENUE = LOCAL ROAD
CAROLINE AVENUE = LOCAL ROAD
55TH STREET = MINOR ARTERIAL



PROGRAM AND OFFICE ENGINEER: CHARLES F. RIDDLE, P.E. (847) 705-4406, SCHAUMBURG, IL

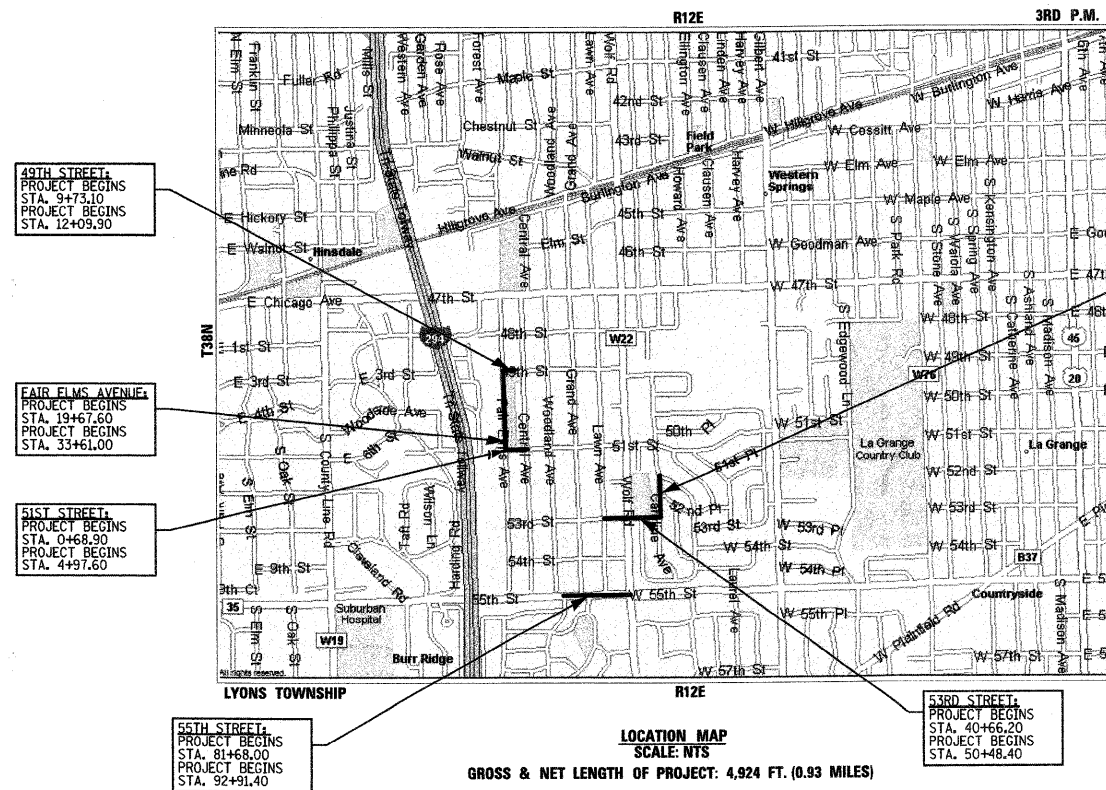
**PROJECT LOCATED IN
VILLAGE OF WESTERN SPRINGS**



FULL SIZE PLANS HAVE BEEN PREPARED USING STANDARD ENGINEERING SCALES. REDUCED SIZED PLANS WILL NOT CONFORM TO STANDARD SCALES. IN MAKING MEASUREMENTS ON REDUCED PLANS, THE ABOVE SCALES MAY BE USED.

J.U.L.I.E.
JOINT UTILITY LOCATION INFORMATION FOR EXCAVATION
1-800-892-0123
OR 811

CONTRACT NO. 63596



**STATE OF ILLINOIS
DEPARTMENT OF TRANSPORTATION
DIVISION OF HIGHWAYS**

APPROVED: 03/21 2011
Marshall
Village of Western Springs,
Assistant Director of Municipal Services

PASSED: APRIL 11 2011
Charles F. Riddle
District 1 Engineer of Local Roads & Streets

Releasing for Bid
Based on Limited
Review APRIL 11, 2011
Diane M. O'Keefe
Deputy Director of Highways, Region 1 Engineer

PRINTED BY AUTHORITY OF THE STATE OF ILLINOIS
JAMES J. BENES & ASSOCIATES, INC.

**JAMES J. BENES & ASSOCIATES
CONSULTING ENGINEERS**
950 WARRENVILLE ROAD, SUITE 101
LISLE, IL 60532
(630) 719-7570
SIGNATURE: *[Signature]*
DATE: 03/21/11
IL LICENSE NO: 062-034438
EXP. DATE: NOVEMBER 30, 2011
FIELD: JAMES J. BENES AND ASSOCIATES, INC.
CIVIL ENGINEERING