

F.A.U. RTE.	SECTION	COUNTY	TOTAL SHEETS	SHEET NO.
3782	10-00093-00-RS	COOK	17	1
ILLINOIS		CONTRACT NO. 63600		

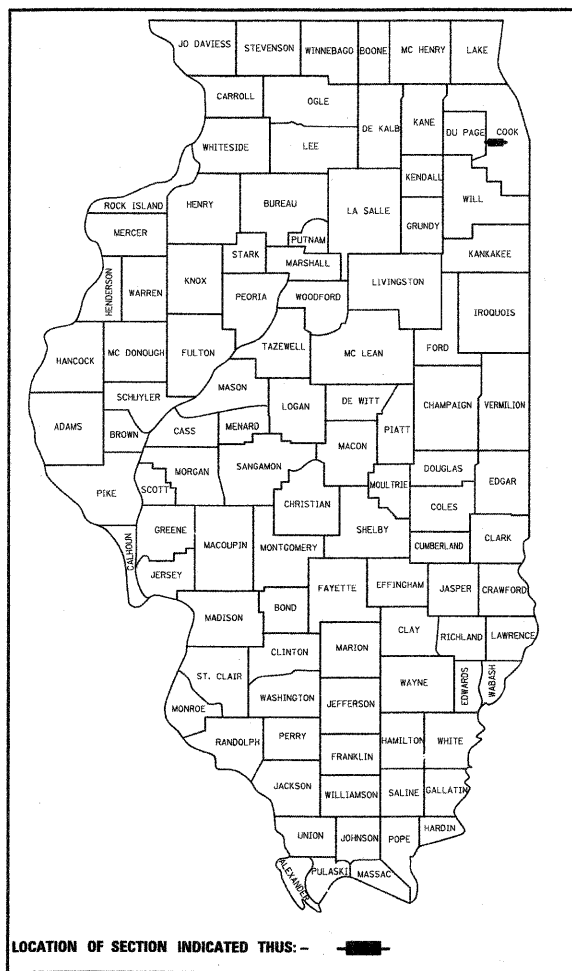
STATE OF ILLINOIS
DEPARTMENT OF TRANSPORTATION
DIVISION OF HIGHWAYS

FOR INDEX OF SHEETS, SEE SHEET NO. 2

**PLANS FOR PROPOSED
FEDERAL AID HIGHWAY**

F.A.U. 3782 (HILLGROVE AVENUE)
F.A.U. 1697 (HAMPTON AVE.) TO F.A.U. 2689 (WOLF RD.)

RESURFACING
SECTION: 10-00093-00-RS
PROJECT: M-9003(718)
VILLAGE OF WESTERN SPRINGS
COOK COUNTY
C-91-118-11



LOCATION OF SECTION INDICATED THUS: —

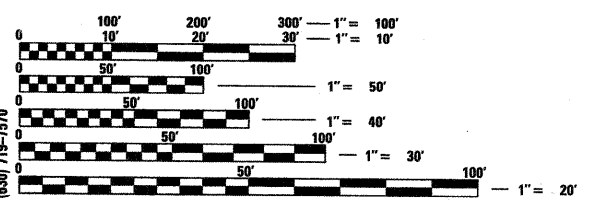
PROGRAM AND OFFICE ENGINEER: CHARLES F. RIDDLE, P.E. (847) 705-4406, SCHAUMBURG, IL
CONSULTANT: JAMES J. BENES & ASSOCIATES, INC. (630) 719-7570

TRAFFIC DATA
ADT:
HILLGROVE AVENUE = 5000(2020)

POSTED SPEED LIMIT:
HILLGROVE AVENUE = 25 MPH

DESIGN DESIGNATION:
HILLGROVE AVENUE = COLLECTOR-URBAN

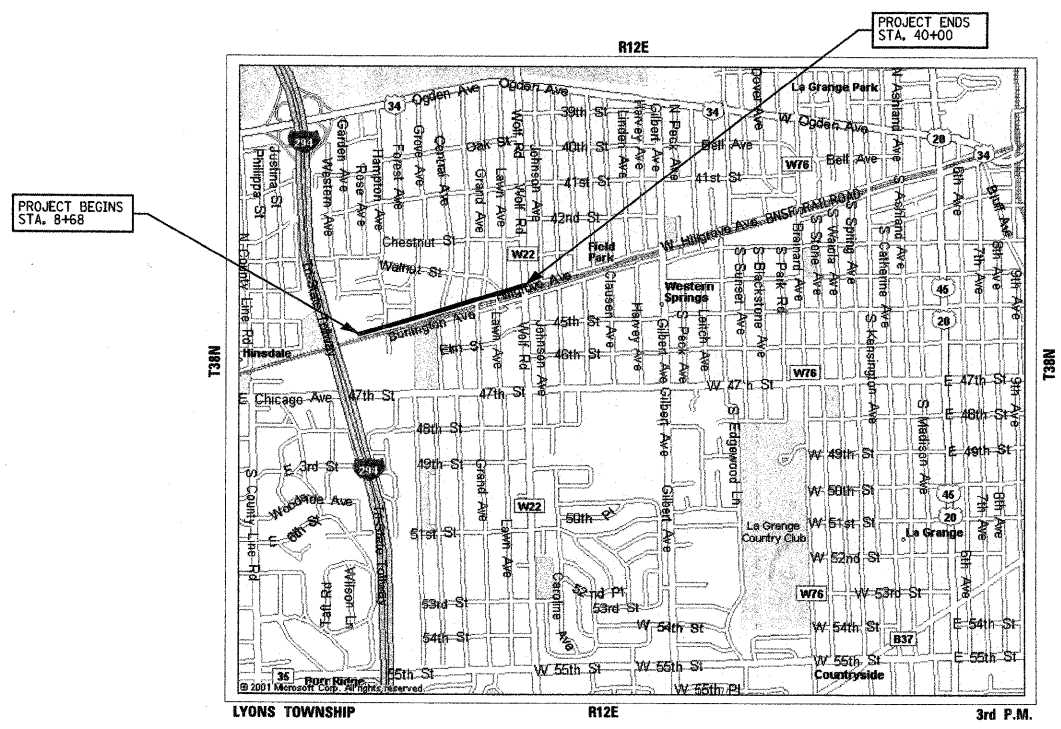
PROJECT LOCATED IN
VILLAGE OF WESTERN SPRINGS



FULL SIZE PLANS HAVE BEEN PREPARED USING STANDARD ENGINEERING SCALES. REDUCED SIZED PLANS WILL NOT CONFORM TO STANDARD SCALES. IN MAKING MEASUREMENTS ON REDUCED PLANS, THE ABOVE SCALES MAY BE USED.

J.U.L.I.E.
JOINT UTILITY LOCATION INFORMATION FOR EXCAVATION
1-800-892-0123
OR 811

CONTRACT NO. 63600



LOCATION MAP
SCALE: NTS
GROSS & NET LENGTH OF PROJECT: 3,132 FT. (0.59 MILES)

STATE OF ILLINOIS
DEPARTMENT OF TRANSPORTATION
DIVISION OF HIGHWAYS

APPROVED: *[Signature]* 2011 03/21/11
Village of Western Springs,
Assistant Director of Municipal Services

PASSED: APRIL 11 2011
[Signature]
District 1 Engineer of Local Roads & Streets

Releasing for Bid
Based on Limited
Review APRIL 11, 2011
[Signature]
Deputy Director of Highways, Region 1 Engineer

PRINTED BY AUTHORITY OF THE STATE OF ILLINOIS
JAMES J. BENES & ASSOCIATES, INC.

JAMES J. BENES & ASSOCIATES
CONSULTING ENGINEERS
950 WARRENVILLE ROAD, SUITE 101
LISLE, IL 60532
(630) 719-7570
SIGNATURE: *[Signature]*
DATE: 03/21/11
P.L. LICENSE NO: 062-034438
EXP. DATE: NOVEMBER 30, 2011
FIELD: JAMES J. BENES AND ASSOCIATES, INC.
CIVIL ENGINEERING